

## SMP & SMPW Series

### TECHNICAL DATA:

#### Aluminum

- Extrusion – CS uses multiple alloys & tempers which are established to be the most appropriate for the given use of individual parts. Will be one of the following: (6063-T5, T6, T52) (6061-T5, T6, T51) (6105-T5, T6) (6005-T5) (6005A-T5, T61), ASTM B221
- Sheet – 6061-T6, 3003 H14, 5005 H34, ASTM-B209.

#### Vapor Barrier

- Material: 7-Ply Polyethylene, ASTM-E-1745-11
- Color: Black
- 3" Tensile Strength: 275 lbs., ASTM-D-882
- Puncture Strength: 79 lbs., ASTM-D-4833
- PPT Resistance: 62 lbs., ASTM-D-2582

#### Seal

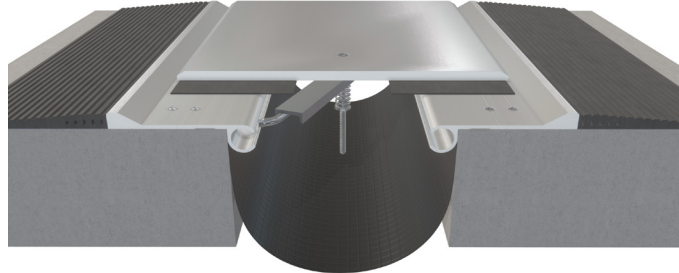
- Material – EPDM
- Color – Black
- Durometer - 75 Shore A, ASTM D2240

#### Epoxy

- 2 part
- Gel Time – 35 minutes, ASTM C881
- Bond Strength (2 day cure) – 2,500 psi, ASTM C882
- Bond Strength (14 day cure) – 4,000 psi, ASTM C882
- Compressive Modulus – 285,100 psi, ASTM D695

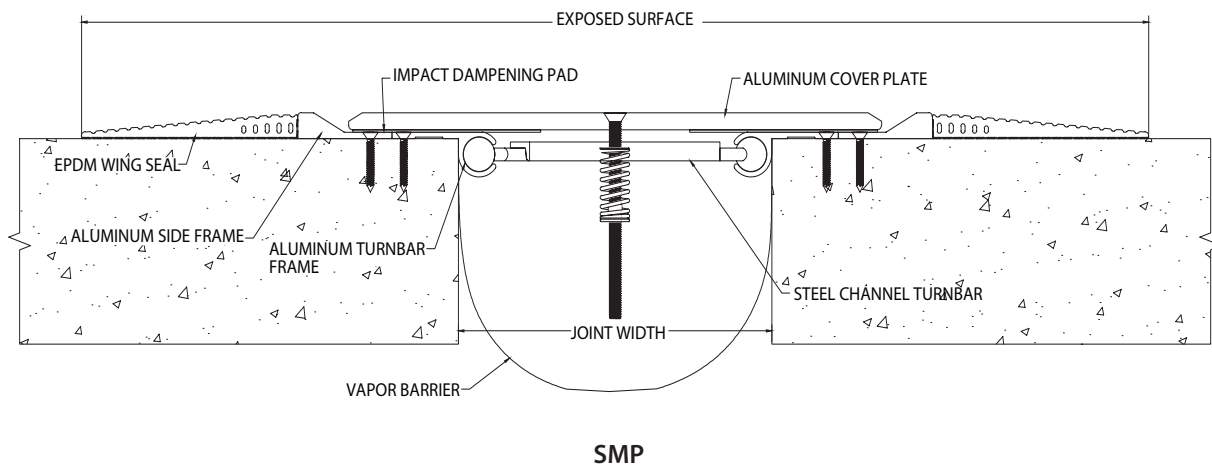
#### Edge Sealant

- Tack free time – 35 minutes, ASTM C679
- Hardness - 30 Shore A, ASTM C661



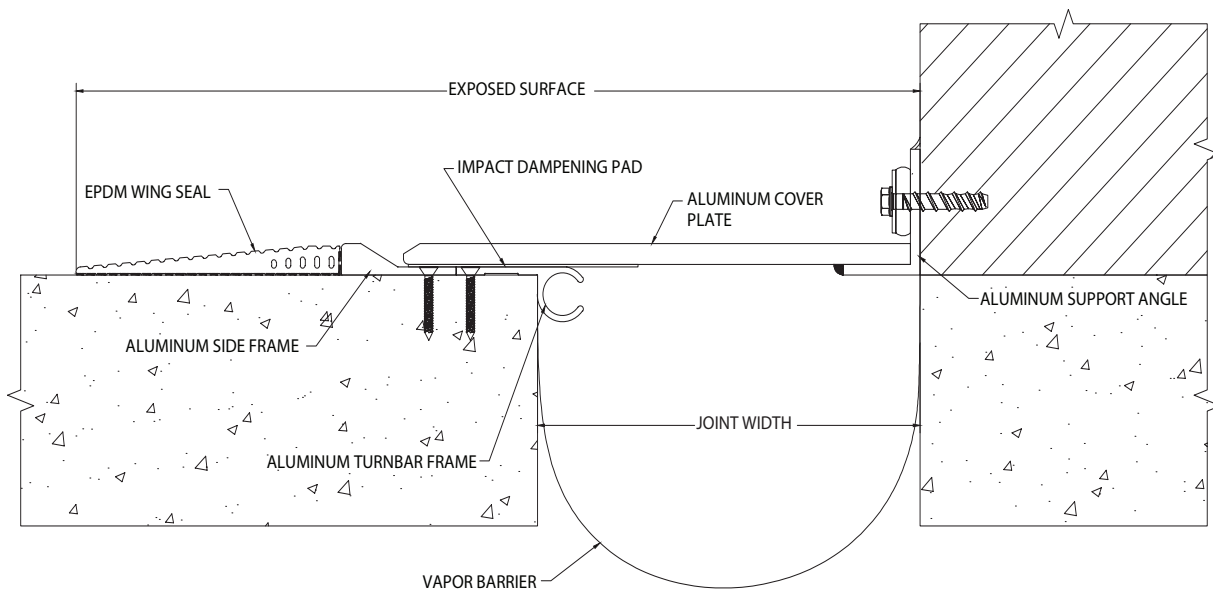
# SMP & SMPW Series

MODEL	JOINT WIDTH	MINIMUM OPENING	MAXIMUM OPENING	EXPOSED SURFACE	BLOCKOUT WIDTH	BLOCKOUT HEIGHT
SMP-500	5.00" (127mm)	2.88" (73mm)	10.38" (264mm)	29.13" (740mm)	N/A	N/A
SMP-600	6.00" (152mm)	2.88" (73mm)	11.38" (289mm)	30.13" (765mm)	N/A	N/A
SMP-700	7.00" (178mm)	2.88" (73mm)	12.38" (314mm)	31.13" (791mm)	N/A	N/A
SMP-800	8.00" (203mm)	4.13" (105mm)	14.88" (378mm)	32.06" (814mm)	N/A	N/A
SMP-900	9.00" (229mm)	4.13" (105mm)	16.50" (419mm)	33.06" (840mm)	N/A	N/A
SMP-1000	10.00" (254mm)	4.13" (105mm)	18.00" (457mm)	34.06" (865mm)	N/A	N/A
SMP-1100	11.00" (279mm)	4.13" (105mm)	19.50" (495mm)	35.06" (891mm)	N/A	N/A
SMP-1200	12.00" (305mm)	4.13" (105mm)	20.38" (518mm)	36.06" (916mm)	N/A	N/A
SMP-1300	13.00" (330mm)	4.13" (105mm)	21.88" (556mm)	37.56" (954mm)	N/A	N/A
SMP-1400	14.00" (356mm)	4.13" (105mm)	23.38" (594mm)	39.06" (992mm)	N/A	N/A
SMP-1500	15.00" (381mm)	4.13" (105mm)	24.88" (632mm)	40.56" (1,030mm)	N/A	N/A
SMP-1600	16.00" (406mm)	4.13" (105mm)	26.38" (670mm)	42.06" (1,068mm)	N/A	N/A
SMP-1700	17.00" (432mm)	4.13" (105mm)	27.88" (708mm)	43.56" (1,106mm)	N/A	N/A
SMP-1800	18.00" (457mm)	4.13" (105mm)	29.38" (746mm)	45.06" (1,145mm)	N/A	N/A
SMP-1900	19.00" (483mm)	4.13" (105mm)	30.88" (784mm)	46.56" (1,183mm)	N/A	N/A
SMP-2000	20.00" (508mm)	4.13" (105mm)	32.38" (822mm)	48.06" (1,221mm)	N/A	N/A
SMP-2100	21.00" (533mm)	4.13" (105mm)	33.88" (861mm)	49.56" (1,259mm)	N/A	N/A
SMP-2200	22.00" (559mm)	4.13" (105mm)	35.38" (899mm)	51.06" (1,297mm)	N/A	N/A
SMP-2300	23.00" (584mm)	4.13" (105mm)	36.75" (933mm)	52.56" (1,335mm)	N/A	N/A
SMP-2400	24.00" (610mm)	4.13" (105mm)	38.25" (972mm)	54.06" (1,373mm)	N/A	N/A



# SMP & SMPW Series

MODEL	JOINT WIDTH	MINIMUM OPENING	MAXIMUM OPENING	EXPOSED SURFACE	BLOCKOUT WIDTH	BLOCKOUT HEIGHT
SMPW-500	5.00" (127mm)	3.00" (76mm)	9.00" (229mm)	17.06" (433mm)	N/A	N/A
SMPW-600	6.00" (152mm)	3.00" (76mm)	10.00" (254mm)	18.06" (459mm)	N/A	N/A
SMPW-700	7.00" (178mm)	3.00" (76mm)	11.00" (279mm)	19.06" (484mm)	N/A	N/A
SMPW-800	8.00" (203mm)	3.31" (84mm)	12.25" (311mm)	20.06" (510mm)	N/A	N/A
SMPW-900	9.00" (229mm)	3.31" (84mm)	13.25" (337mm)	21.06" (535mm)	N/A	N/A
SMPW-1000	10.00" (254mm)	3.31" (84mm)	14.25" (362mm)	22.06" (560mm)	N/A	N/A
SMPW-1100	11.00" (279mm)	3.31" (84mm)	15.25" (387mm)	23.06" (586mm)	N/A	N/A
SMPW-1200	12.00" (305mm)	3.31" (84mm)	16.25" (413mm)	24.06" (611mm)	N/A	N/A
SMPW-1300	13.00" (330mm)	3.31" (84mm)	17.50" (445mm)	25.25" (641mm)	N/A	N/A
SMPW-1400	14.00" (356mm)	3.31" (84mm)	18.75" (476mm)	26.50" (673mm)	N/A	N/A
SMPW-1500	15.00" (381mm)	3.31" (84mm)	20.00" (508mm)	27.75" (705mm)	N/A	N/A
SMPW-1600	16.00" (406mm)	3.31" (84mm)	21.25" (540mm)	29.00" (737mm)	N/A	N/A
SMPW-1700	17.00" (432mm)	3.31" (84mm)	22.50" (572mm)	30.25" (768mm)	N/A	N/A
SMPW-1800	18.00" (457mm)	3.31" (84mm)	23.75" (603mm)	31.50" (800mm)	N/A	N/A
SMPW-1900	19.00" (483mm)	3.31" (84mm)	25.00" (635mm)	32.75" (832mm)	N/A	N/A
SMPW-2000	20.00" (508mm)	3.31" (84mm)	26.25" (667mm)	33.75" (857mm)	N/A	N/A
SMPW-2100	21.00" (533mm)	3.31" (84mm)	27.50" (699mm)	35.00" (889mm)	N/A	N/A
SMPW-2200	22.00" (559mm)	3.31" (84mm)	28.75" (730mm)	36.50" (927mm)	N/A	N/A
SMPW-2300	23.00" (584mm)	3.31" (84mm)	30.00" (762mm)	37.50" (953mm)	N/A	N/A
SMPW-2400	24.00" (610mm)	3.31" (84mm)	31.25" (794mm)	39.00" (991mm)	N/A	N/A



SMPW