

# SCO-8 and ASCO-8

Metal surface mounted end wall guards with standard 3 1/2" legs.

## Product Data

## Technical Data:

- 3 1/2" (89.0mm) standard leg; custom leg lengths available
- 3/16" (4.8mm) radius guard
- Construction adhesive standard; optional screws available
- Maximum 12' (3.7m) lengths
- Specified factory-formed end wall width

## Features:

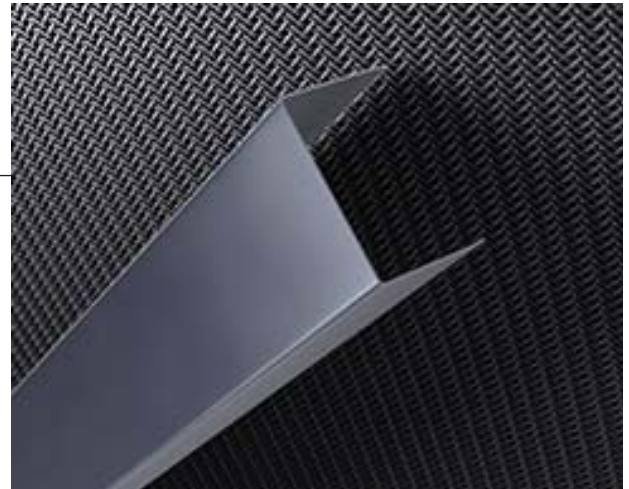
- Tested in accordance with ASTM E84 Class A/1 fire characteristics
- 5 year product warranty

## Options:

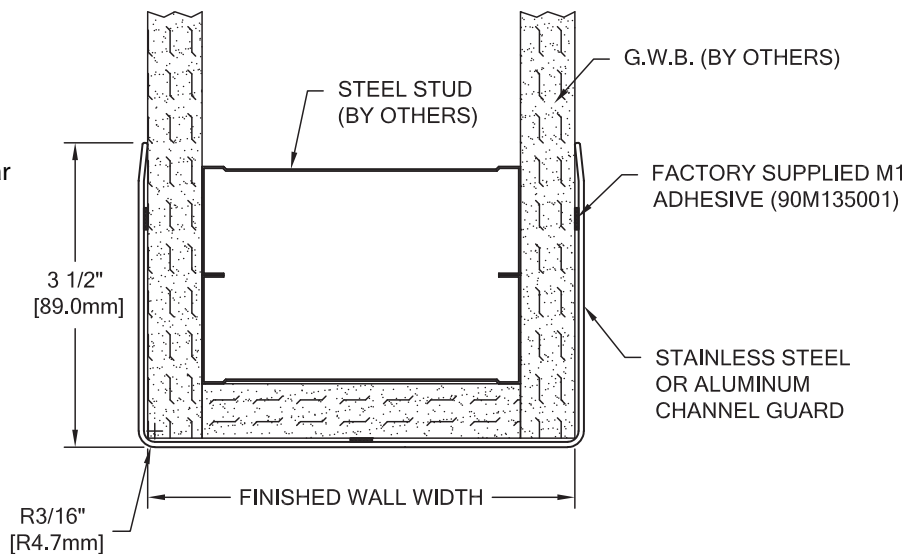
- SCO-8 - 16 gauge type 304 stainless steel alloy with #4 satin finish; 14, 18 and 20 gauges available; type 316 and 430 alloys available
- ASCO-8 - aluminum alloy 5005 H34 with clear anodized finish; .063" (1.6mm)
- Specified custom leg width; minimum 1" (25.4mm) for adhesive or 2" (50.8mm) for screws, maximum 6" (152.4mm)
- Odd degree corners
- Powder coat finishes available

## Similar Models:

- CO-8 - stainless steel 90 degree
- ACO-8 - aluminum 90 degree
- CO-8M - stainless steel odd degree
- ACO-8M - aluminum odd degree



Real Metal | Powder Coat



## SUGGESTED SPECIFICATIONS SECTION 10 26 00

### CS Acrovyn Models SCO-8 and ASCO-8

#### Part 1 - General

##### 1.01 Summary

**A.** This section includes the following types of wall protection systems:

1. Corner Guards

**B.** Related sections: The following sections contain requirements related to this section:

1. Handrails, Bumper Guards, Crash Rails, Accent Rails, Wall Covering, Wall Panels, Door Protection; refer to section 10 26 00 "Wall and Door Protection"

2. Blocking in walls for fasteners; refer to section 09 22 00 "Supports for Plaster and Gypsum Board"

##### 1.02 References

**A.** National codes (IBC, UBC, SBCCI, BOCA and Life Safety)

**B.** American Society for Testing and Materials (ASTM)

##### 1.03 Submittals

General: Submit the following in accordance with conditions of contract and Division 1 specification section 01 33 00 "Submittal Procedures":

**A.** Product data and detailed specifications for each system component and installation accessory required, including installation methods for each type of substrate.

**B.** Shop drawings showing locations, extent and installation details of corner guards. Show methods of attachment to adjoining construction.

**C.** Samples for verification purposes: Submit the following samples, as proposed for this work, for verification of guard:

1. 12" (304.8mm) long sample of each model specified.

**D.** Product test reports from a qualified independent testing laboratory showing compliance of each component with requirements indicated.

**E.** Maintenance data for wall protection system components for inclusion in the operating and maintenance manuals specified in Division 1.

##### 1.04 Quality Assurance

**A.** Installer qualifications: Engage an installer who has no less than 3 years experience in installation of systems similar in complexity to those required for this project.

**B.** Manufacturer's qualifications: Not less than 5 years experience in the production of specified products and a record of successful in-service performance.

**C.** Code compliance: Assemblies should conform to all applicable codes including IBC, UBC, SBCCI, BOCA and Life Safety.

**D.** Fire performance characteristics: Provide metal components tested in accordance with ASTM E84 for Class A/1 fire characteristics.

**E.** Single source responsibility: Provide all components of the wall protection system manufactured by the same company to ensure compatibility of color, texture and physical properties.

##### 1.05 Delivery, Storage and Handling

**A.** Deliver materials to the project site in unopened original factory packaging clearly labeled to show manufacturer.

**B.** Material must be stored flat.

##### 1.06 Project Conditions

**A.** Installation areas must be enclosed and weatherproofed before installation commences.

#### Part 2 - Products

##### 2.01 Manufacturers

**A.** Interior surface protection products specified herein and included on the submittal drawings shall be manufactured by Construction Specialties, Inc.

##### 2.02 Materials

**A. Stainless steel: To be type 304 alloy with #4 satin finish for model SCO-8; minimum strength and durability properties as specified in ASTM A276.**

**B. Aluminum: To be alloy 5005 H34 with clear anodized finish for model ASCO-8; minimum strength and durability properties as specified in ASTM B221.**

**C.** All necessary fasteners to be supplied by the manufacturer.

##### 2.03 Corner Guards

**A. Stainless steel corner guards to be CS Acrovyn: Surface mounted guards to be 16 gauge stainless steel.**

1. Model SCO-8 Stainless steel corner guard with 3/16" (4.8mm) radius and 3 1/2" (88.9mm) standard legs for end wall conditions. Mounted with construction adhesive standard; stainless steel screws optional. Specify required dimensions. Optional powder coat finish available; select from standard powder coat finishes.

**B. Aluminum corner guards to be CS Acrovyn: Surface mounted guards to be .063" (1.6mm) thick.**

1. Model ASCO-8 Aluminum corner guard with 3/16" (4.8mm) radius and 3 1/2" (88.9mm) standard legs for end wall conditions. Mounted with construction adhesive standard; stainless steel screws optional. Specify required dimensions. Optional powder coat finish available; select from standard powder coat finishes.

**2.04 Fabrication**  
**A.** General: Fabricate wall protection systems to comply with requirements indicated for design, dimensions, detail, finish and member sizes.

**B.** Preassemble components in shop as much as possible to minimize field assembly.

##### 2.05 Finishes

**A.** General: Comply with NAAMM "Metal Finishes Manual" for recommendations relative to applications and designations of finishes.

#### Part 3 - Execution

##### 3.01 Examination

**A.** Verification of conditions: Examine areas and conditions under which work is to be performed and identify conditions detrimental to proper or timely completion.

1. Do not proceed until unsatisfactory conditions have been corrected.

##### 3.02 Preparation

**A.** Surface preparation: Prior to installation, clean substrate to remove dirt, debris and loose particles. Perform additional preparation procedures as required by manufacturer's instructions.

**B.** Protection: Take all necessary steps to prevent damage to material during installation as required in manufacturer's installation instructions.

##### 3.03 Installation

**A.** Install the work of this section in strict accordance with the manufacturer's recommendations, using only approved adhesive or mounting hardware and locating all components firmly into position, level and plumb.

##### 3.04 Cleaning

**A.** General: Immediately upon completion of installation, clean guards in accordance with manufacturer's recommended cleaning method.

**B.** Remove surplus materials, rubbish and debris resulting from installation as work progresses and upon completion of work.

##### 3.05 Protection

**A.** Protect installed materials to prevent damage by other trades. Use materials that may be easily removed without leaving residue or permanent stains.