

SF 200-600 Series

TECHNICAL DATA:

Aluminum

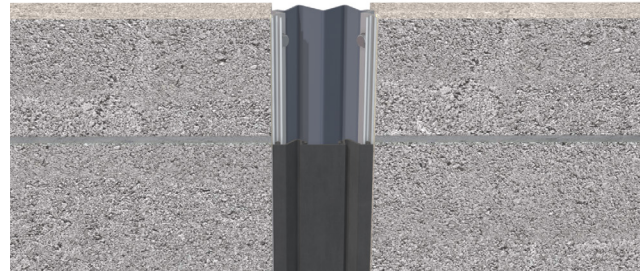
- Extrusion – CS uses multiple alloys & tempers which are established to be the most appropriate for the given use of individual parts. Will be one of the following: (6063-T5, T6, T52) (6061-T5, T6, T51) (6105-T5, T6) (6005-T5) (6005A-T5, T61), ASTM B221

Primary Seal

- Material: Santoprene-TPV 8221-70 (All Standard Colors)
- Single Durometer: 75 Shore-A, ASTM D2240
- Brittle Point: -76°F
- Ozone Resistance: No Cracks, ASTM D1149
- UV Resistance: Very Good

Secondary Seal

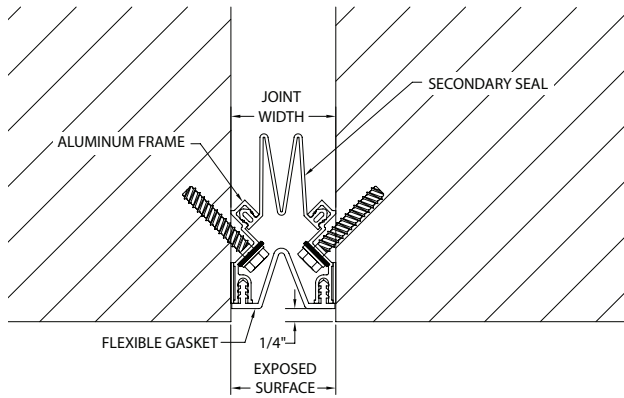
- Material – PVC, ASTM D2000
- Durometer – 65 Shore A



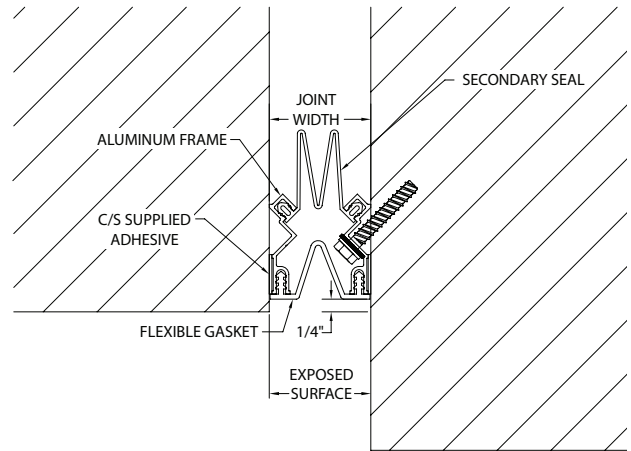
Capable of Lateral Movement

MODEL	JOINT WIDTH	MINIMUM OPENING	MAXIMUM OPENING	EXPOSED SURFACE	BLOCKOUT WIDTH	BLOCKOUT HEIGHT
SF-200	2.00" (51mm)	1.25" (32mm)	3.00" (76mm)	2.00" (51mm)	N/A	N/A
SF-300	3.00" (76mm)	1.25" (32mm)	4.50" (114mm)	3.00" (76mm)	N/A	N/A
SF-400	4.00" (102mm)	1.25" (32mm)	6.00" (152mm)	4.00" (102mm)	N/A	N/A
SF-500	5.00" (127mm)	1.25" (32mm)	7.50" (191mm)	5.00" (127mm)	N/A	N/A
SF-600	6.00" (152mm)	1.75" (44mm)	9.00" (229mm)	6.00" (152mm)	N/A	N/A

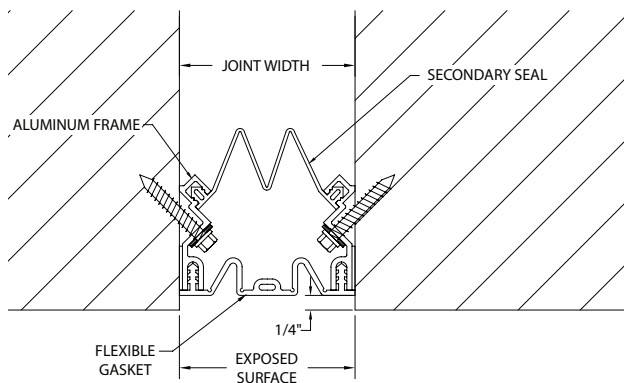
SF 200-600 Series



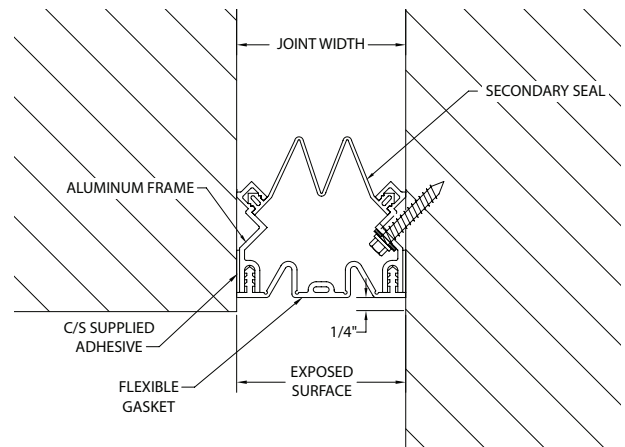
SF-200



SF-200 (Corner)



SF-300/600



SF-300/600 (Corner)

Note: SF-600 Frames differ in design