

SJP-S & SJPW-S Series

Technical Data:

Aluminum

- Extrusion – CS uses multiple alloys & tempers which are established to be the most appropriate for the given use of individual parts. Will be one of the following: (6063-T5, T6, T52) (6061-T5, T6, T51) (6105-T5, T6) (6005-T5) (6005A-T5, T61), ASTM B221
- Sheet – 6061-T6, 3003-H14, 5005-H34, ASTM B209

Stainless Steel

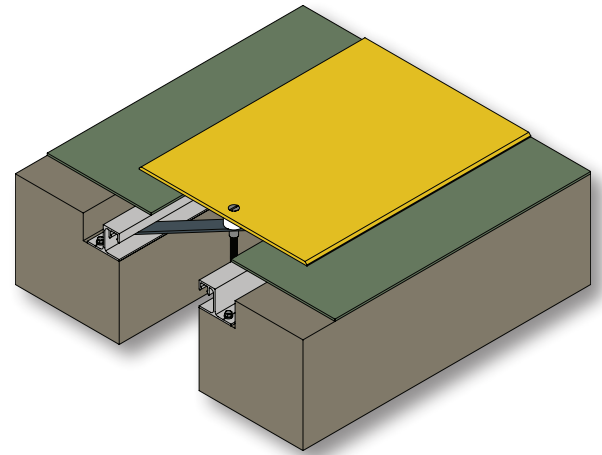
- Type 304 ASTM A167, A240A, A240M

Turnbar

- Material – C1075 Blue Temper Spring Steel
- Hardness - RC 44-47
- Finish - "A" Coating (Corrosion Protection)

Standard Loading

- 500 lbs.

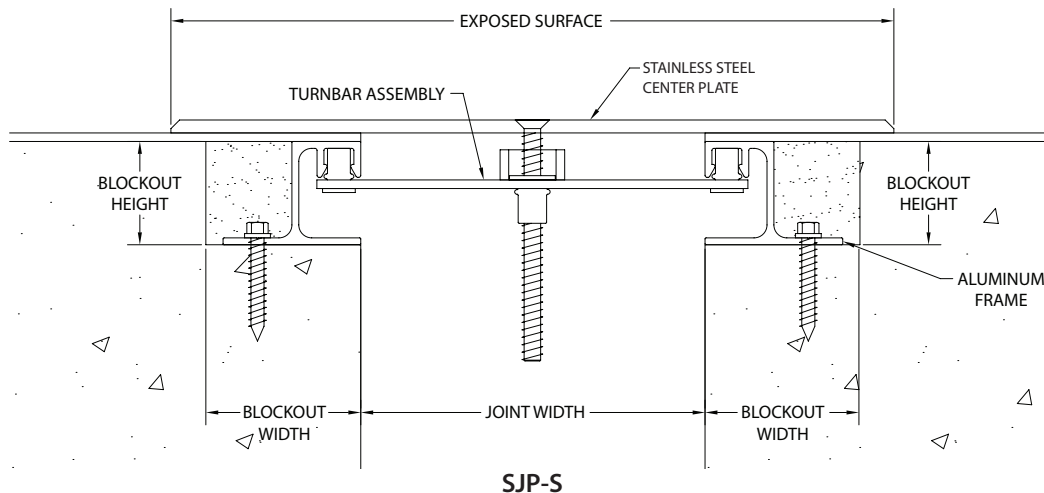


Capable of Lateral Movement

SJP-S & SJPW-S Series

MODEL	JOINT WIDTH	MINIMUM OPENING	MAXIMUM OPENING	EXPOSED SURFACE	BLOCKOUT WIDTH	BLOCKOUT HEIGHT
SJP-100S/B	1.00" (25mm)	0.50" (13mm)	4.00" (102mm)	4.50" (114mm)	2.50" (64mm)	1.50" (38mm)
SJP-200S/B	2.00" (51mm)	1.00" (25mm)	4.50" (114mm)	4.50" (114mm)	2.25" (57mm)	1.50" (38mm)
SJP-300S/B	3.00" (76mm)	1.00" (25mm)	4.75" (121mm)	6.50" (165mm)	2.25" (57mm)	1.50" (38mm)
SJP-400S/B	4.00" (102mm)	1.00" (25mm)	7.50" (191mm)	7.50" (191mm)	2.25" (57mm)	1.50" (38mm)
SJP-500S/B	5.00" (127mm)	1.00" (25mm)	7.50" (191mm)	10.50" (267mm)	2.25" (57mm)	1.50" (38mm)
SJP-600S/B	6.00" (152mm)	1.00" (25mm)	11.13" (283mm)	11.88" (302mm)	2.25" (57mm)	1.50" (38mm)
SJP-700S/B	7.00" (178mm)	1.00" (25mm)	12.25" (311mm)	13.50" (343mm)	2.25" (57mm)	1.50" (38mm)
SJP-800S/B	8.00" (203mm)	1.00" (25mm)	14.25" (362mm)	15.00" (381mm)	2.25" (57mm)	1.50" (38mm)
SJP-900S/B	9.00" (229mm)	1.00" (25mm)	16.50" (419mm)	16.50" (419mm)	2.25" (57mm)	1.50" (38mm)
SJP-1000S/B	10.00" (254mm)	1.00" (25mm)	16.75" (425mm)	18.00" (457mm)	2.25" (57mm)	1.50" (38mm)
SJP-1100S/B	11.00" (279mm)	1.00" (25mm)	16.75" (425mm)	19.50" (495mm)	2.25" (57mm)	1.50" (38mm)
SJP-1200S/B	12.00" (305mm)	1.00" (25mm)	21.00" (533mm)	21.00" (533mm)	2.25" (57mm)	1.50" (38mm)
SJP-1300S/B	13.00" (330mm)	1.00" (25mm)	21.00" (533mm)	22.50" (572mm)	2.25" (57mm)	1.50" (38mm)
SJP-1400S/B	14.00" (356mm)	1.00" (25mm)	23.75" (603mm)	24.00" (610mm)	2.25" (57mm)	1.50" (38mm)
SJP-1500S/B	15.00" (381mm)	1.00" (25mm)	24.25" (616mm)	25.50" (648mm)	2.25" (57mm)	1.50" (38mm)
SJP-1600S/B	16.00" (406mm)	1.00" (25mm)	24.25" (616mm)	27.00" (686mm)	2.25" (57mm)	1.50" (38mm)

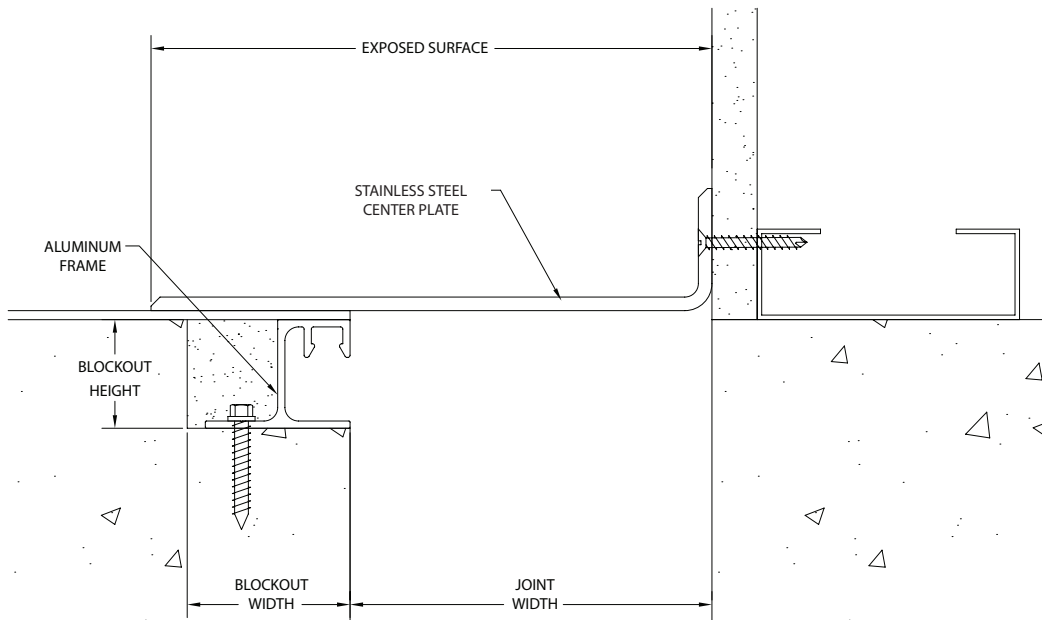
Contact factory for larger sizes.



SJP-S & SJPW-S Series

MODEL	JOINT WIDTH	MINIMUM OPENING	MAXIMUM OPENING	EXPOSED SURFACE	BLOCKOUT WIDTH	BLOCKOUT HEIGHT
SJPW-100S/B	1.00" (25mm)	0.00" (0mm)	2.50" (64mm)	2.75" (70mm)	2.50" (64mm)	1.50" (38mm)
SJPW-200S/B	2.00" (51mm)	0.00" (0mm)	3.25" (83mm)	3.25" (83mm)	2.25" (57mm)	1.50" (38mm)
SJPW-300S/B	3.00" (76mm)	0.00" (0mm)	3.75" (95mm)	4.75" (121mm)	2.25" (57mm)	1.50" (38mm)
SJPW-400S/B	4.00" (102mm)	0.00" (0mm)	5.75" (146mm)	5.75" (146mm)	2.25" (57mm)	1.50" (38mm)
SJPW-500S/B	5.00" (127mm)	0.00" (0mm)	6.25" (159mm)	7.75" (197mm)	2.25" (57mm)	1.50" (38mm)
SJPW-600S/B	6.00" (152mm)	0.00" (0mm)	8.50" (216mm)	8.94" (227mm)	2.25" (57mm)	1.50" (38mm)
SJPW-700S/B	7.00" (178mm)	4.00" (102mm)	9.50" (241mm)	10.25" (260mm)	2.25" (57mm)	1.50" (38mm)
SJPW-800S/B	8.00" (203mm)	4.50" (114mm)	10.00" (254mm)	11.50" (292mm)	2.25" (57mm)	1.50" (38mm)
SJPW-900S/B	9.00" (229mm)	5.00" (127mm)	12.75" (324mm)	12.75" (324mm)	2.25" (57mm)	1.50" (38mm)
SJPW-1000S/B	10.00" (254mm)	5.50" (140mm)	13.31" (338mm)	14.00" (356mm)	2.25" (57mm)	1.50" (38mm)
SJPW-1100S/B	11.00" (279mm)	6.00" (152mm)	13.88" (353mm)	15.25" (387mm)	2.25" (57mm)	1.50" (38mm)
SJPW-1200S/B	12.00" (305mm)	6.50" (165mm)	16.50" (419mm)	16.50" (419mm)	2.25" (57mm)	1.50" (38mm)
SJPW-1300S/B	13.00" (330mm)	7.00" (178mm)	17.00" (432mm)	17.75" (451mm)	2.25" (57mm)	1.50" (38mm)
SJPW-1400S/B	14.00" (356mm)	7.50" (191mm)	18.75" (476mm)	19.00" (483mm)	2.25" (57mm)	1.50" (38mm)
SJPW-1500S/B	15.00" (381mm)	8.00" (203mm)	19.50" (495mm)	20.25" (514mm)	2.25" (57mm)	1.50" (38mm)
SJPW-1600S/B	16.00" (406mm)	8.50" (216mm)	20.00" (508mm)	21.50" (546mm)	2.25" (57mm)	1.50" (38mm)

Contact factory for larger sizes.



SJPW-S