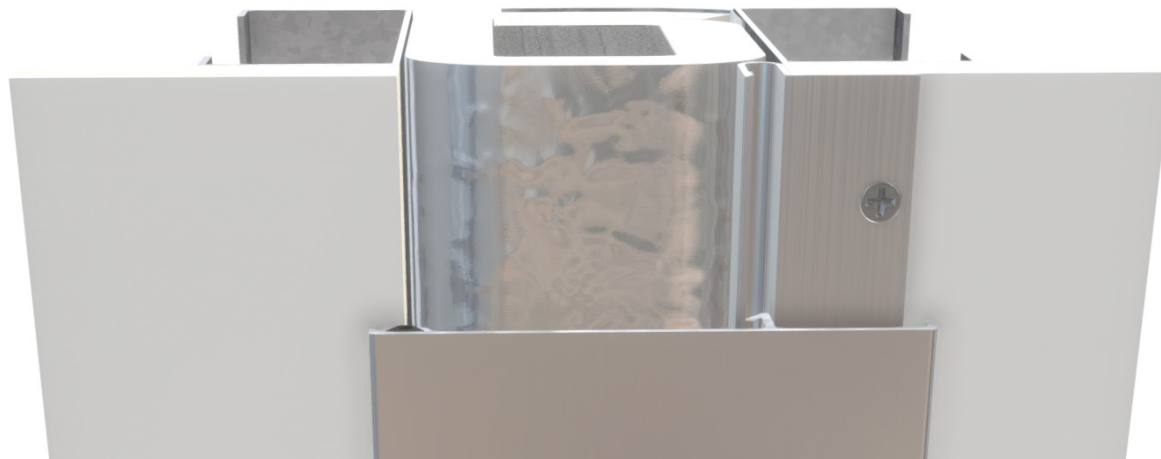


FB-24



Shown with wall cover (sold separately)

This fire barrier is designed for 1" – 4" nominal wall expansion joints. The third-party listing ensures a 2-hour fire rating. A single-piece installation, the easy-to-install block type fire barrier does not require any mechanical fasteners and has a simple splice method which reduces installation time.

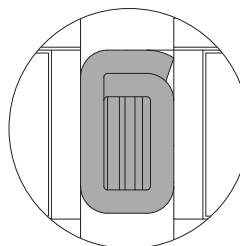
Product Details

- For 1" - 4" (25.4mm - 101.6mm) nominal wall joints
- 8' (2.4m) lengths
- In Stock - 3-pack (24 total LF per box)
- Transitions easily to FB-22 floor barrier
- Standard Five-Year Warranty

Certifications

- Performance Standards: UL-2079, ASTM E1399
- Code Compliance: UBC, SBC, BOCA, IBC

Applications



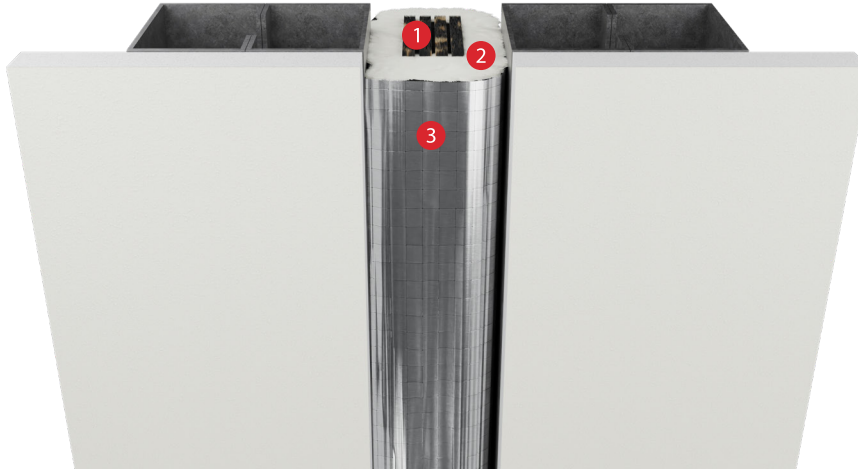
Wall to Wall



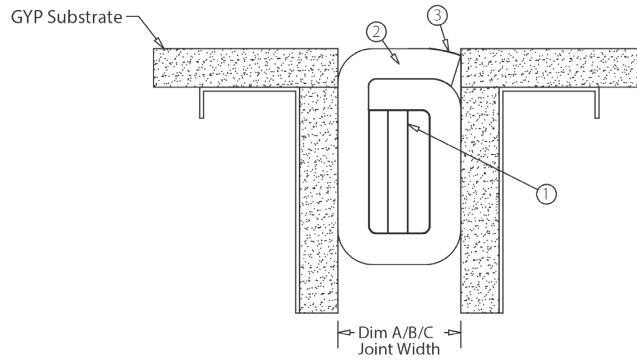
Additional resources

FB-24 - Wall to Wall

[Buy Online](#)



- 1. Insulation block
- 2. Ceramic blanket
- 3. Aluminum foil tape



Performance Data

MODEL	JOINT WIDTH	MIN. OPENING	MAX. OPENING	LISTING NUMBER
FB241PK3	1.00" (25.4mm)	0.50" (12.7mm)	1.50" (38.1mm)	CSI/EJCA 120-05
FB242PK3	2.00" (50.8mm)	1.00" (25.4mm)	3.00" (76.2mm)	CSI/EJCA 120-05
FB243PK3	3.00" (76.2mm)	1.50" (38.1mm)	4.50" (114.3mm)	CSI/EJCA 120-05
FB244PK3	4.00" (101.6mm)	2.00" (50.8mm)	6.00" (152.4mm)	CSI/EJCA 120-05

FB-24

Technical Details

- Block type barrier designed for 6" (maximum open) wall expansion joints.
- Provides a 2-hour wall fire endurance rating, minimizing smoke passage and accommodates dynamic movement without degradation of the material.
- Third-party listed to meet current building codes and testing criteria.
- Stainless Steel Material
 - SSF, Type 304, is a 2-mil thick stainless steel foil used over fire barrier systems to maintain compliance with UL listings. It is typically used in concealed areas where applying expansion joint covers over the fire barrier is not applicable.
- Basic Uses
 - For 6" (maximum open) vertical wall rated expansion joints for buildings and parking decks.
- Precautions
 - Refer to Material Safety Data Sheet for detailed health and safety information prior to use.