

Perform Louvers

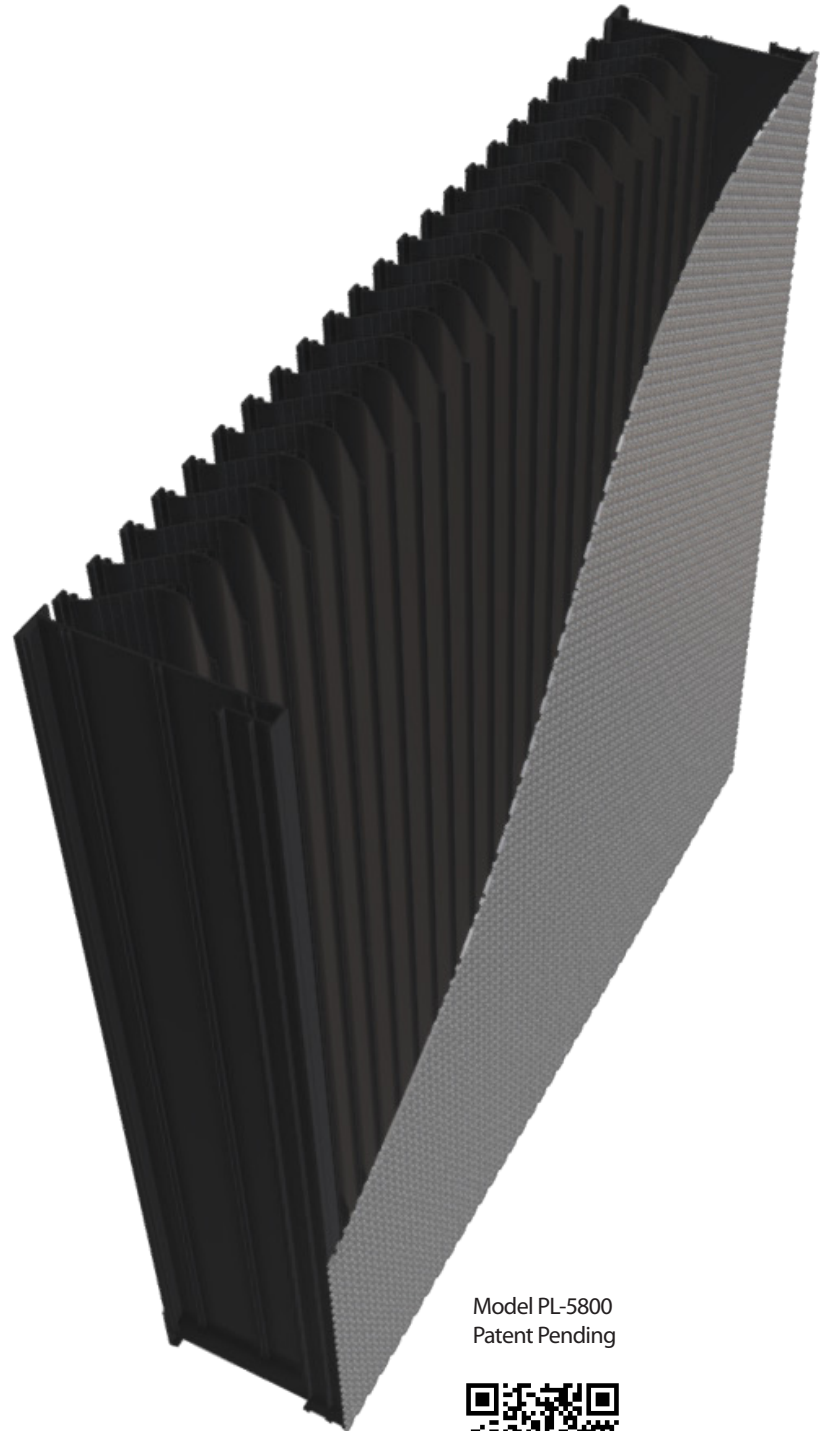
Perform Louvers provide superior air and water performance while making the louver disappear under a modern perforated skin. The perforated sheet and louver are unified within a single framed system; this tested, fully assembled unit provides louver performance without the louvered look. Take your design a step further by incorporating printed graphics, photography, branding, signage and more with our Facades by Design™ finish option. The first manufacturer to offer a fully concealed louver system that's been tested for air performance and water penetration, CS turns louvers into a covert operation that's proven to perform.

Advantages

- Covert appearance
- Perforated skin is engineered to work in harmony with interior louver blades
- Available in storm-resistant models
- Multiple round hole sizes and patterns available
- Excellent rain defense
- High free area
- Low pressure drop
- Optional Facades by Design graphics, photography, branding, signage and more can be printed on the perforated sheet

Applications

- All architectural applications where a louver is required but the louvered aesthetic is not desired
- Curtain wall facades
- Metal panel facades



Model PL-5800
Patent Pending



[View 3D Model](#) →

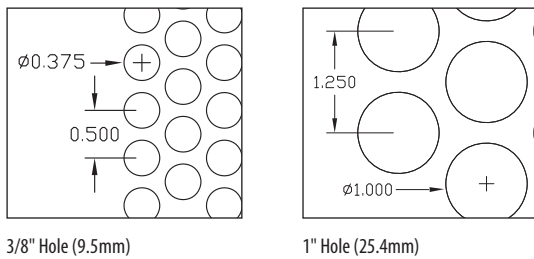
Perform Louvers

Finish Options



See all finish options online at c-sgroup.com.

Pattern Options



Product Details

MODEL	LOUVER DEPTH	BLADE SPACING	TESTED PATTERN		BLADE ORIENTATION
			3/8" Hole	1" Hole	
PL-3600	5¼" (133.4mm)	7/8" (22.2mm)	●	●	Vertical
DCPL-3704	5⅜" (136.5mm)	7/8" (22.2mm)	●	●	
PL-3705	5⅜" (136.5mm)	7/8" (22.2mm)	●	●	
PL-5700	7½" (190.5mm)	2" (50.8mm)	●	●	
PL-5800	7½" (190.5mm)	1 ½" (38.1mm)	●	●	
PL-4080	7½" (190.5mm)	4" (101.6mm)	●	●	Horizontal

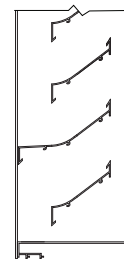
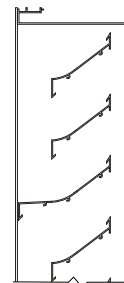
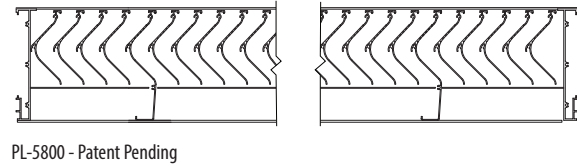
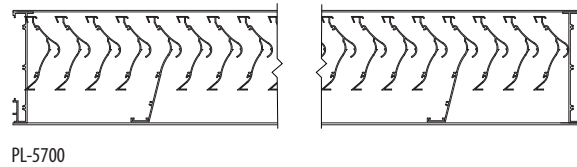
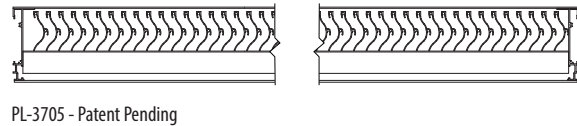
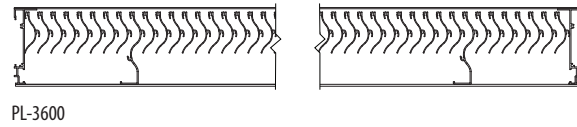
Certifications/Testing

- These models are not AMCA Certified, but have been performance tested.
- *For model specific certifications, listing and testing - refer to the Performance Chart on our Architectural Louvers Product Guide.*

Warranty

- 1-year Material Warranty
- 20-year Finish Warranty (excludes anodized)
- 10-year Finish Warranty Facades by Design™

Models



PL-4080



Learn More →