

HELIX MODEL Z1 WITH PIPE STEM FRAME

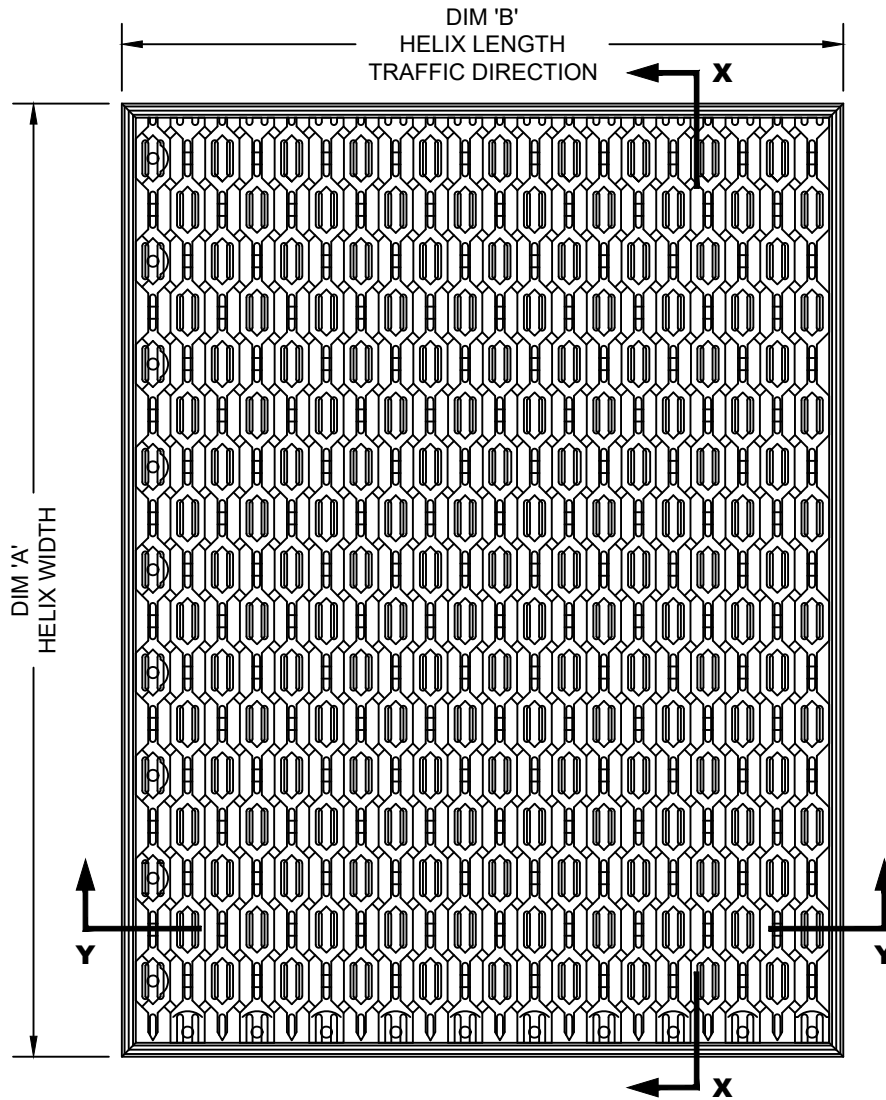
INSERT STYLE: NA

INSERT COLOR: NA

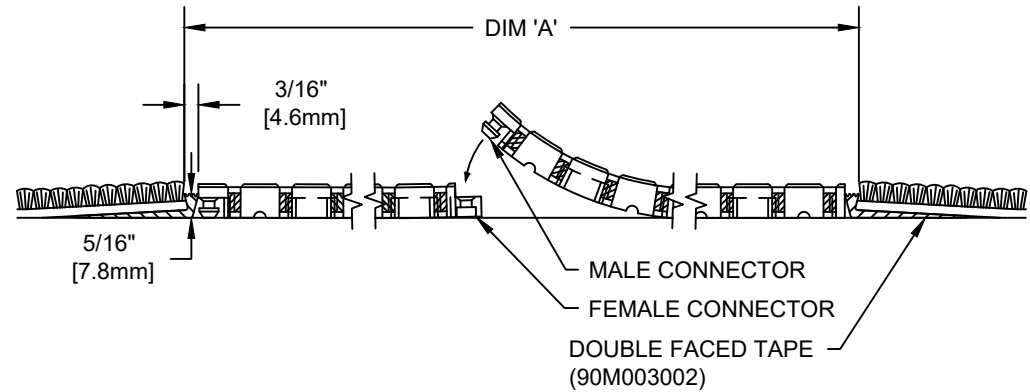
CATALOG NUMBER: HZ1

PART NUMBER: 18I001XXX

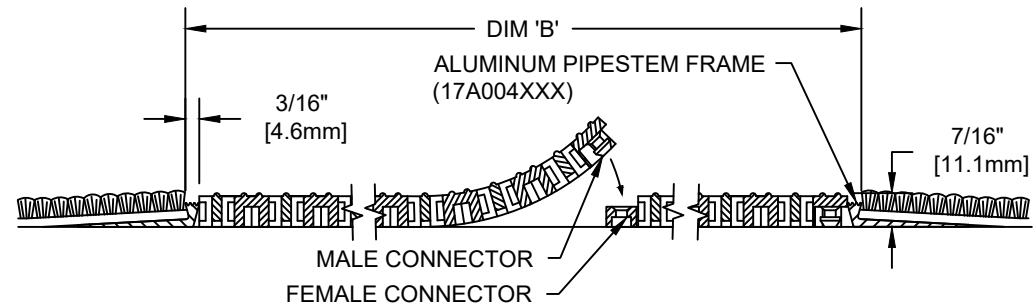
NO.	REVISION	DATE	BY
NO.	F&F RELEASE	DATE	BY



TYPICAL PLAN VIEW



SECTION X-X



SECTION Y-Y

NOTES:

*SUPPLIED IN SINGLE TILES
(60 TILES) PER CASE.

*HELIX Z1 IS ABLE TO SUPPORT A 600 LB ROLLING
LOAD.

*ADDITIONAL SPECIFICATIONS ARE CONTAINED IN THE LATEST
C/S CATALOG OR AT C-SGROUP.COM AND ARE CONSIDERED
PART OF THIS TRANSMITTAL.

*INDIVIDUAL TILES MEASURE 12" WIDE BY 9" IN LENGTH.

CS Construction Specialties™
6696 Route 405 Highway, Muncy PA 17756
(800) 233-8493 • Fax (570) 546-4692 • www.c-sgroup.com

PLEASE VERIFY ALL	QTY	MARK #	LOCATION	MODEL	DIM 'A' WIDTH	DIM 'B' LENGTH	MAT COLOR	FRAME FINISH
							BLACK OR GRAY	
							BLACK OR GRAY	
							BLACK OR GRAY	
							BLACK OR GRAY	

PROJECT:		
LOCATION:		
CONTRACTOR:		
AGENT:		SHT:
DRG. BY:	DATE:	JOB NO.: