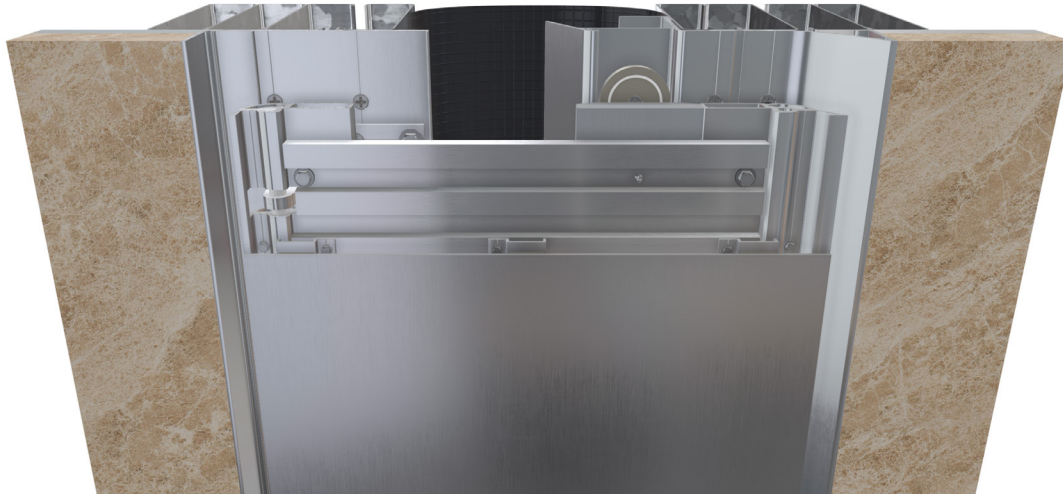


XLP-2G Series



Model XLP-2G

This metal wall cover is designed for exterior applications where concealment is desired, where high wind loads are expected, or where lateral shear is required. This re-engineered system has a modular design with lightweight magnets and a compact pulley system making it easier to install and modify in the field. The standard aluminum infill panel can be color matched to blend with adjacent finishes.

Advantages

- Concealed cover with minimal sightlines
- Modular system allows for quick installation and field modifications
- Accommodates high wind loads, lateral shear, and seismic movement
- Safety cables prevent damage to surrounding finishes during a seismic event
- Magnet and pulley system return cover to nominal position after a seismic event
- Standard aluminum infill panel can be painted to match surrounding finishes
- Can be supplied in custom heights and widths to match building aesthetics
- Vapor barrier included



[View 3D Model](#) →

XLP-2G Series

Product Details

- Joint sizes range from 8" to 24" (203.2mm to 609.6mm)
- 10' (304.8cm) stock lengths
- Meets ASTM E1399



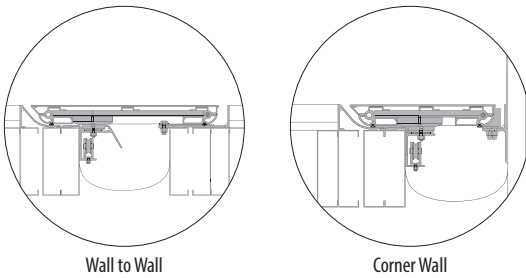
Standard Finish



Premium finishes are available in Kynar and Powder Coat options. See all finish options online at c-sgroup.com.

Aluminum in contact with concrete/masonry will have a 2 mil heavy metal free high solids primer

Model Details



Warranty

- Standard Five-Year Warranty

MODEL	WALL TO WALL	CORNER WALL (C)
XLP-2G	●	
XLPC-2G		●



Learn More →