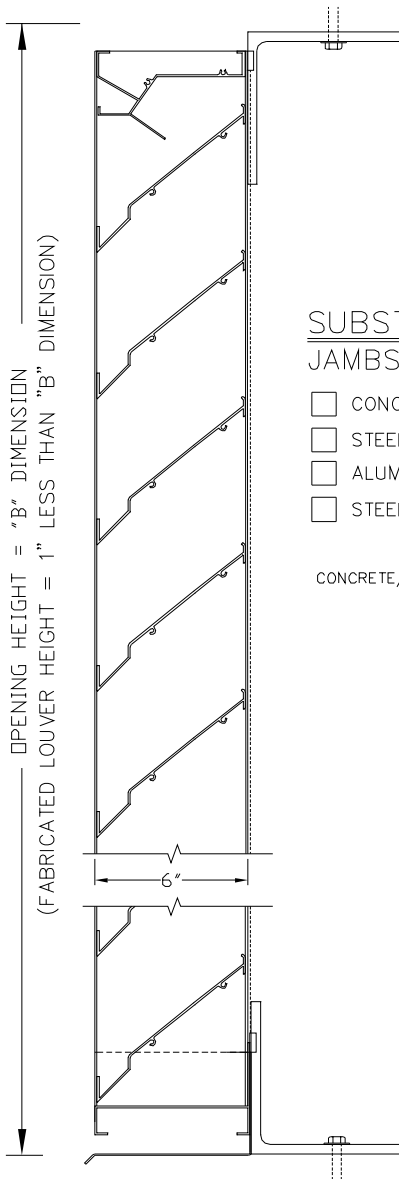
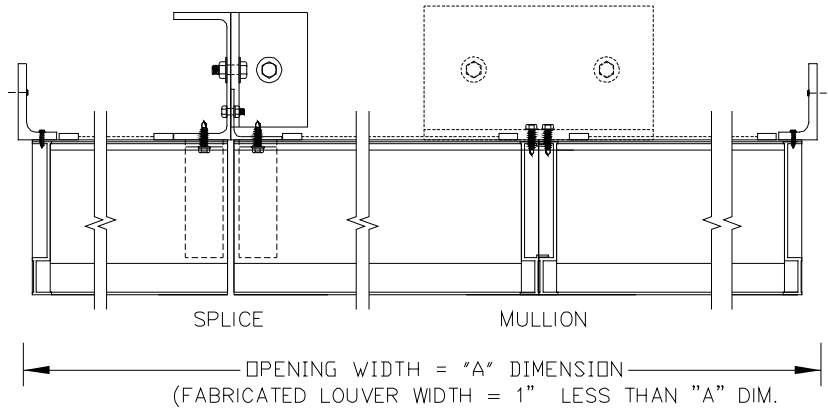


# DADE COUNTY HURRICANE LOUVER – MODEL DC-6174



**SECTION VIEW**



**PLAN VIEW**

**SUBSTRATE**

**JAMBS**

- CONCRETE/CMU
- STEEL
- ALUMINUM THICKNESS \_\_\_\_\_
- STEEL STUD GAGE \_\_\_\_\_

**HEAD**

- CONCRETE/CMU
- STEEL
- ALUMINUM THICKNESS \_\_\_\_\_
- STEEL STUD GAGE \_\_\_\_\_

**SILL**

- CONCRETE/CMU
- STEEL
- ALUMINUM THICKNESS \_\_\_\_\_
- STEEL STUD GAGE \_\_\_\_\_

CONCRETE/CMU MINIMUM 3000 PSI

STEEL 3/16" THK MIN.

ALUMINUM 1/8" THK MIN.

STEEL STUD MIN 16 GAGE

**SCREENS**

- SCREEN NOT REQUIRED
- SCREEN REQUIRED
- INTERIOR MOUNTED
- EXTERIOR MOUNTED
- BIRDSCREEN-5/8" EXP. ALUM. MESH IN ALUMINUM FRAME. (MILL FINISH)
- INSECT SCREEN (18x16 MESH)

**FINISHES**

- STANDARD MILL
- FLUOROPOLYMER POWDER COAT
  - (1) OF C/S STD. COLORS
  - CUSTOM COLOR, C/S REQUIRES A COLOR CHIP FOR MATCHING
- ARCHITECTURAL CLASS I (DK. OR MED.) BRONZE ANODIC COATING
- 204-R1 CLEAR ANODIZE
- OTHER \_\_\_\_\_

C/S EXTRUDED ALUM DADE COUNTY HURRICANE LOUVER MODEL DC-6174. FRAMES TO BE FABRICATED FROM 6063-T6 ALLOY, WITH REINFORCING BOSSES AND A NOMINAL .081" MATERIAL THICKNESS. ALL FASTENERS TO BE STAINLESS STEEL.

WIND LOAD = PSF

MARK	QTY.	"A" DIM.	"B" DIM.	NUMBER OF MULLIONS	LOCATION	REMARKS

Construction Specialties, Inc.  
 49 Meeker Avenue  
 Cranford, New Jersey 07016  
 (908) 272-5200  
 Fax (908) 272-6038

PROJECT:	DRAWN BY:	CKD. BY:
CUSTOMER:	DATE:	
ARCH'T:	DWG. NO.:	
AGENT:	SHEET 1 OF 1	