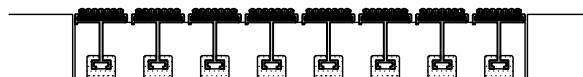


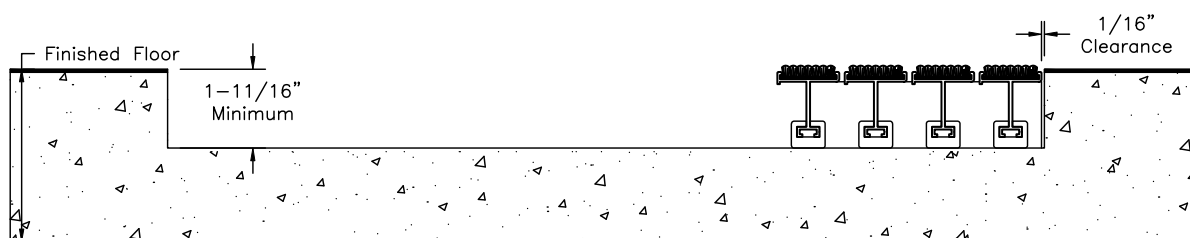


## INSTALLATION INSTRUCTIONS PEDIGRID G1 WITH NO FRAME



### 1.) SITE PREP

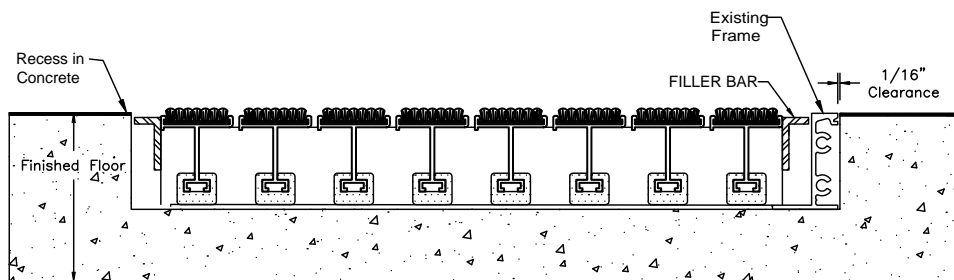
- USE WOOD FORMS TO PREPARE A RECESS IN THE CONCRETE A MINIMUM 1-11/16" DEPTH TO FINAL FINISHED FLOOR SURFACE.
- RECESS SHOULD BE MADE TO OVERALL SIZE OF UNIT, PLUS 1/16" ON ALL SIDES OF THE RECESS TO ALLOW FOR CLEARANCE
- AFTER CONCRETE HAS CURED, REMOVE THE WOOD FORMS.(SEE ILLUSTRATION A)



(ILLUSTRATION A)

### 2.) FILLER BAR

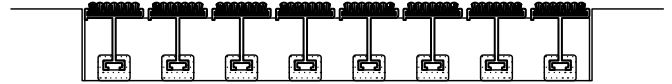
- GRIDS THAT ARE NOT IN INCREMENTS OF 1-1/2" WILL REQUIRE A FILLER BAR.  
(SEE ILLUSTRATION B)



(ILLUSTRATION B)



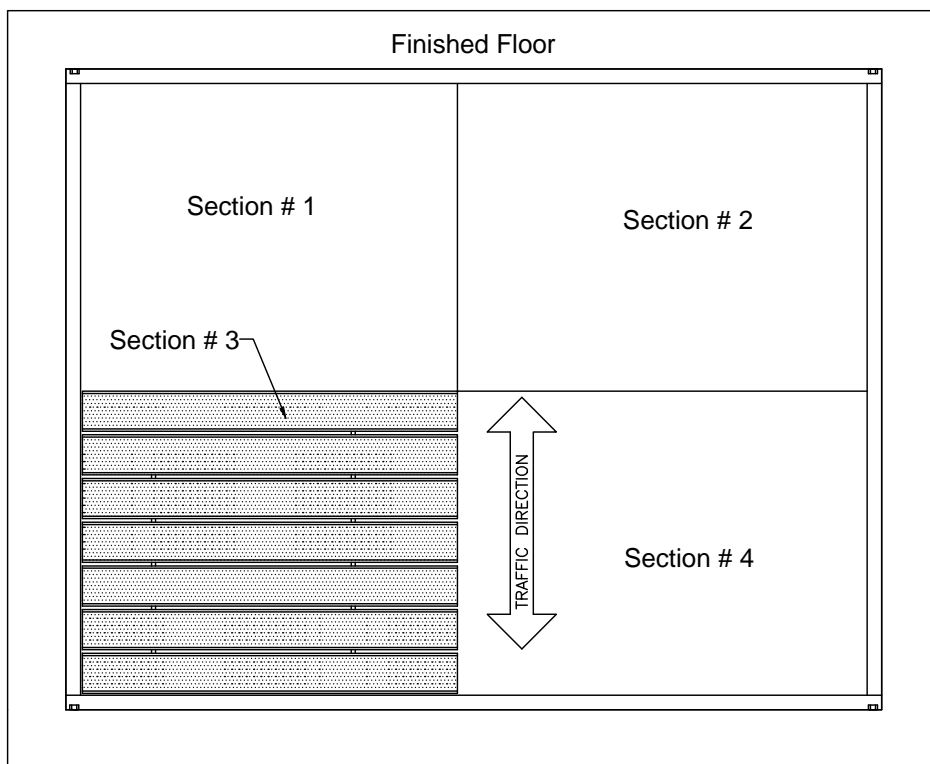
## INSTALLATION INSTRUCTIONS PEDIGRID G1 WITH NO FRAME



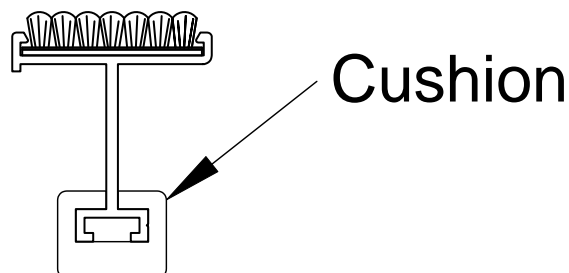
### 3.) PEDIGRID INSTALLATION

- THE GRID(S) ARE NOW INSTALLED WITHIN THE RECESS OR EXISTING FRAME BY LAYING THEM INTO THEIR POSITION BY SECTION IF APPLICABLE, WITH THE RAILS RUNNING PERPENDICULAR TO THE WALKING DIRECTION. (SEE ILLUSTRATION C)
- MAX GRID MODULE SIZE IS 144" WIDE x 36" TRAFFIC DIRECTION.
- IF APPLICABLE, ODD SHAPED GRIDS WILL BE LABELED ACCORDING TO THE LAYOUT PROVIDED WITH THE SHOP DRAWINGS.
- POSITION THE VINYL CUSHIONS ON THE RAIL 20" O.C. TO CREATE A PLUMB, SOLID FLUSH FINISHED SURFACE. (SEE ILLUSTRATION D)

(ILLUSTRATION C)



(ILLUSTRATION D)





#### 4.) COMPLETION

IT IS NECESSARY TO COVER THE INSTALLATION WITH 3/4" PLYWOOD UNTIL ALL ADDITIONAL PROJECT WORK IS COMPLETED. THIS WILL PROTECT THE GRIDLINE FROM POTENTIAL ABUSE DURING THE CONSTRUCTION PHASE. DAMAGE OCCURRING FROM INADEQUATE PROTECTION DURING THIS PHASE MAY VOID THE MANUFACTURER'S WARRANTY.

#### 5.) CLEANING AND MAINTENANCE INSTRUCTIONS FOR PEDISYSTEMS

- MANUFACTURER'S SUGGESTED SAFE ROLLING LOAD FOR PEDIGRID G1 IS 400# PER WHEEL.
- HEAVY LOADS BEYOND THIS WEIGHT MAY DAMAGE THE UNITS, CONTRIBUTING TO THEIR PREMATURE FAILURE OR CREATING A TRIPPING HAZARD.
- VACUUM SURFACE REGULARLY WITH BEATER BRUSH ATTACHMENT TO ALLOW CONTACT WITH VARIOUS SURFACES OF ENTRANCE FLOORING.
- BEFORE DEEP CLEANING THE SURFACE, ROLL UNIT BACK TO REMOVE DIRT COLLECTED UNDERNEATH AS NEEDED. DIRT SHOULD BE REMOVED WITH PROFESSIONAL VACUUM CLEANER AND SHOULD NOT BE ALLOWED TO BUILD UP TO THE POINT WHERE A LEVEL MAT SURFACE IS AFFECTED.
- DEEP CLEAN QUARTERLY, EITHER BY REMOVING UNIT TO AN AREA WHERE IT CAN BE CLEANED WITH A POWER WASHER (ON LIGHT SETTING TO AVOID CARPET DAMAGE) OR.
- SHAMPOO THE UNIT IN PLACE (SOAP/WATER EXTRACTION)
- IT IS RECOMMENDED THAT SHAMPOOING TAKE PLACE OVERNIGHT TO ALLOW CARPET FIBERS TIME TO DRY THOROUGHLY BEFORE HEAVY TRAFFIC RESUMES.
- SUGGESTIONS FOR PRE-TREATING THE AREA PRIOR TO SHAMPOOING.
  - REMOVE GUM OR OTHER STICKY SUBSTANCES BY APPLYING A COMMERCIAL FREEZE SPRAY TO THE AFFECTED AREA. THIS SHOULD ALLOW THE RESIDUE TO BREAK OFF EASILY.
  - FOR GROUND -IN DIRT SHOWING IN HIGH TRAFFIC AREAS, ADD ONE CUP OF BLEACH PER GALLON OF WARM WATER AND USE STIFF BRUSH TO PRE-TREAT CARPET FIBERS.
  - IF ALUMINUM NEEDS CLEANED, USE STIFF NYLON BRISTLE BRUSH TO CLEAN WITH SHAMPOO MIXTURE PRIOR TO SHAMPOOING ENTIRE UNIT.
- TO ACHIEVE THE MOST EFFECTIVE SUCTION OF THE SHAMPOOER, RUN THE WAND PERPENDICULAR TO THE RAILS AND NOT ALONG THE LENGTH OF THE CARPET STRIPS.
- TAKE CARE WHEN MOPPING SURROUNDING FLOOR AREA. KEEP MOP AWAY FROM MAT OR GRID. THE AGGRESSIVE TEXTURE OF THE CARPET INSERTS MAY GRAB LINT WHEN THE MOP COMES IN CONTACT, POTENTIALLY CAUSING UNSIGHTLY LINT COLLECTION AT EDGES OF UNIT.
- REPLACEMENT INSERTS ARE AVAILABLE - SEE [WWW.PEDISYSTEMS.COM](http://WWW.PEDISYSTEMS.COM) OR CALL 1-570-546-5941 FOR MORE INFORMATION AND FOR CONTACT INFORMATION FOR YOUR LOCAL REPRESENTATIVE.

7/23/12



Fast Access to Online Resources



Muncy, Pennsylvania • (800) 233-8493 • Fax (570) 546-5169  
 Mississauga Ontario • (888) 895-8955 • Fax (905) 274-6241  
[www.c-sgroup.com](http://www.c-sgroup.com)

This document is the property of Construction Specialties, Inc. and contains CONFIDENTIAL PROPRIETARY INFORMATION that is not to be disclosed to third parties and is not to be used without approval in writing from Construction Specialties, Inc.