

SF 1700-2400 Series

TECHNICAL DATA:

Aluminum

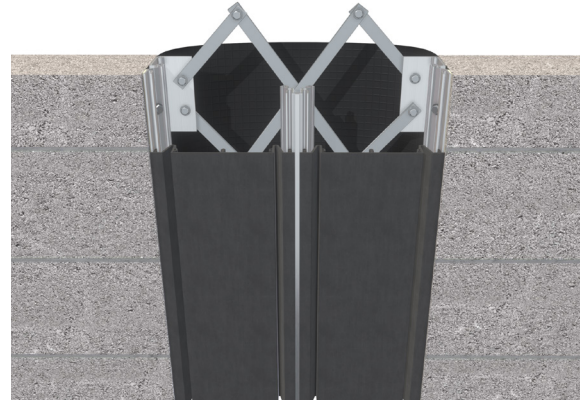
- Extrusion – CS uses multiple alloys & tempers which are established to be the most appropriate for the given use of individual parts. Will be one of the following: (6063-T5, T6, T52) (6061-T5, T6, T51) (6105-T5, T6) (6005-T5) (6005A-T5, T61), ASTM B221

Primary Seal

- Material: Santoprene-TPV 8221-70 (All Standard Colors)
- Single Durometer: 75 Shore-A, ASTM D2240
- Brittle Point: -76°F
- Ozone Resistance: No Cracks, ASTM D1149
- UV Resistance: Very Good

Vapor Barrier

- Material: 7-Ply Polyethylene, ASTM-E-1745-11
- Color: Black
- 3" Tensile Strength: 275 lbs., ASTM-D-882
- Puncture Strength: 79 lbs., ASTM-D-4833
- PPT Resistance: 62 lbs., ASTM-D-2582



Capable of Lateral Movement

MODEL	JOINT WIDTH	MINIMUM OPENING	MAXIMUM OPENING	EXPOSED SURFACE	BLOCKOUT WIDTH	BLOCKOUT HEIGHT
SF-1700	17.00" (432mm)	6.00" (152mm)	25.50" (648mm)	17.00" (432mm)	N/A	N/A
SF-1800	18.00" (457mm)	6.00" (152mm)	27.00" (686mm)	18.00" (457mm)	N/A	N/A
SF-1900	19.00" (483mm)	6.00" (152mm)	28.50" (724mm)	19.00" (483mm)	N/A	N/A
SF-2000	20.00" (508mm)	6.00" (152mm)	30.00" (762mm)	20.00" (508mm)	N/A	N/A
SF-2100	21.00" (533mm)	9.00" (229mm)	31.50" (800mm)	21.00" (533mm)	N/A	N/A
SF-2200	22.00" (559mm)	9.00" (229mm)	33.00" (838mm)	22.00" (559mm)	N/A	N/A
SF-2300	23.00" (584mm)	9.00" (229mm)	34.50" (876mm)	23.00" (584mm)	N/A	N/A
SF-2400	24.00" (610mm)	9.00" (229mm)	36.00" (914mm)	24.00" (610mm)	N/A	N/A

Contact factory for larger sizes.

