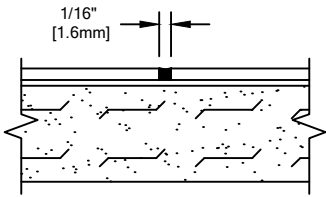


**SHEET COLOR:** \_\_\_\_\_  
 COLOR TO BE SELECTED FROM ONE OF CS STANDARD ACROVYN BY DESIGN COLORS.  
**CAULK COLOR:** \_\_\_\_\_  
 COLOR TO BE SELECTED FROM ONE OF CS STANDARD ACROVYN BY DESIGN COLORS

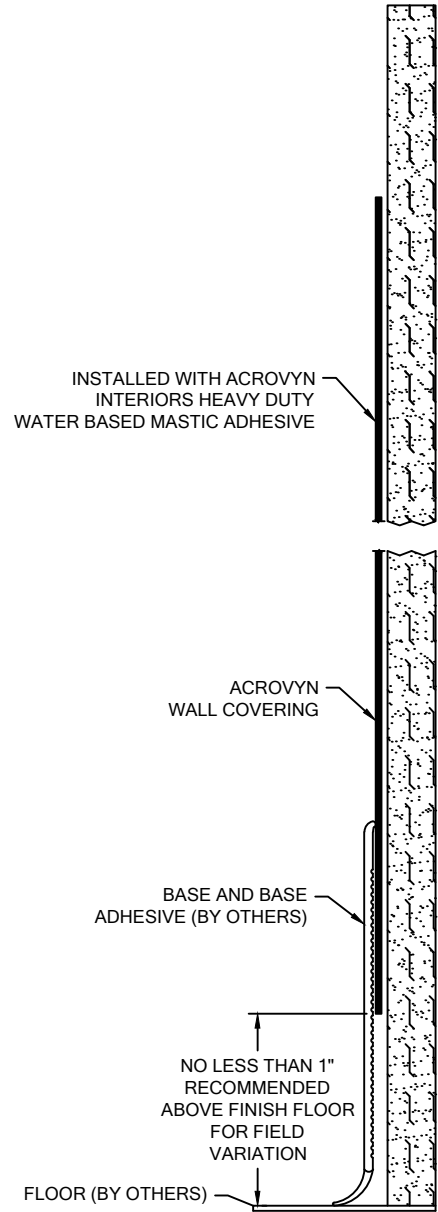
MATERIAL	QTY. REQ'D
48" X 96"	
48" X 120"	

**NOTES:**


- STANDARD SHEET SIZES ARE 48" X 96" OR 48" X 120". TEXTURED SHEET SIZES ARE 43" X 90" OR 43" X 114".
- WOODGRAIN PATTERN DIRECTION IS PARALLEL TO THE 96" OR 120" SIDE OF A STANDARD SHEET, OR 90" OR 114" SIDE OF A TEXTURED SHEET.



**CAULK**  
 (21C002xxx)  
 COVERAGE: 90-100 FT/TUBE  
 COLOR: \_\_\_\_\_  
 QTY.: \_\_\_\_\_



**.040"/.060" ACROVYN WALL COVERING  
 AT PARTIAL/FULL HEIGHT  
 WITH CAULK**

 <p><b>Construction Specialties™</b>          Hughesville, PA   800.233.8493   570.546.5941          Mississauga, ON   888.895.8955   905.274.3611  <a href="http://www.c-sgroup.com">www.c-sgroup.com</a>          © Copyright 2017 Construction Specialties, Inc.</p>	<b>PROJECT:</b>	<b>REVISION:</b>
	<b>JOB NO.:</b>	<b>F&amp;F:</b>
	<b>CUSTOMER:</b>	
	<b>REP:</b>	<b>DATE:</b>
	<b>DRAWN BY:</b>	<b>SHEET NO:</b>