

BL-100AN/200AN BED LOCATOR

PLEASE READ

PLEASE READ THESE INSTRUCTIONS THOROUGHLY PRIOR TO BEGINNING THE BL-100AN/200AN BED LOCATOR INSTALLATION!

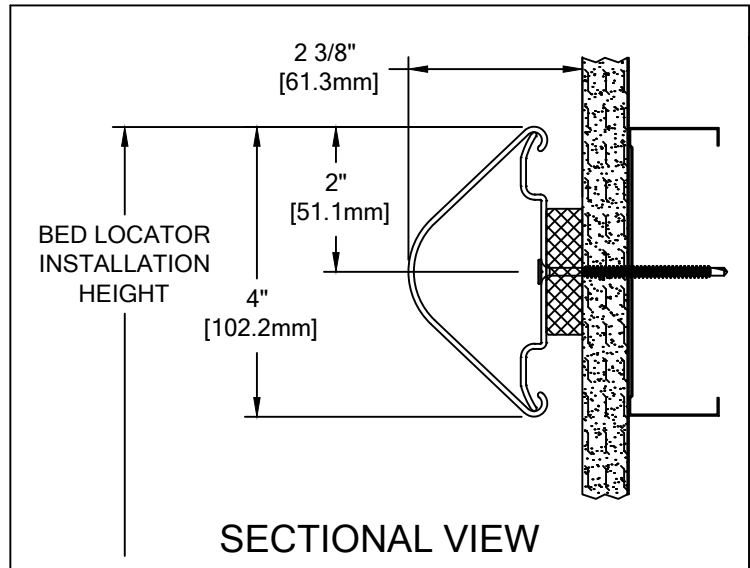
THIS INSTRUCTION SHEET IS INTENDED TO PROVIDE A SPECIFIC GUIDE TO FOLLOW FOR THE INSTALLATION OF THIS BL-100AN/200AN BED LOCATOR. CONTAINED WITHIN IS THE TECHNICAL INFORMATION AND INSTALLATION TECHNIQUES REQUIRED TO COMPLETE AN EFFICIENT, NEAT AND LONG-LASTING INSTALLATION.

INSPECT ALL MATERIALS FOR DAMAGE OR MISSING PARTS. IF YOU DISCOVER DAMAGED OR MISSING MATERIALS, IN THE USA PLEASE NOTIFY THE FACTORY AT (800) 233-8493, AND IN CANADA (888) 895-8955 FOR CUSTOMER SERVICE.

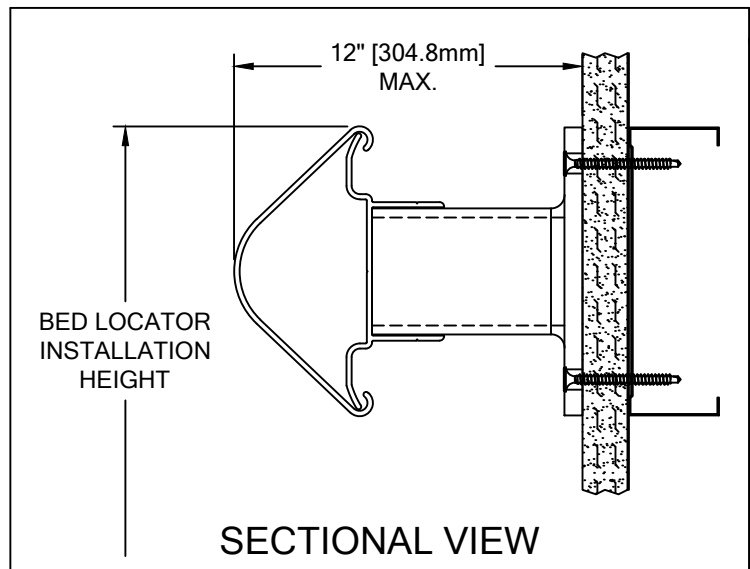
BL-100AN/200AN BED LOCATORS MUST BE INSTALLED IN ACCORDANCE WITH THESE INSTRUCTIONS! FAILURE TO FOLLOW THESE INSTRUCTIONS MAY VOID ANY PRODUCT WARRANTIES AND RESULT IN AN UNSUCCESSFUL INSTALLATION. FOR SPECIFIC QUESTIONS REGARDING THE INSTALLATION OF THIS BL-100AN/200AN BED LOCATOR PLEASE CALL THE FACTORY IN THE USA AT (800) 233-8493 OR EMAIL IWPTECHSUPPORT@C-SGROUP.COM. IN CANADA CALL (888) 895-8955.

IMPORTANT NOTES

1. ALL DIMENSIONS ARE TYPICAL.
2. FOR DRYWALL/PLASTER WALL CONSTRUCTION, IT IS RECOMMENDED FOR FASTENERS TO BE ENGAGED INTO METAL/WOOD STUDS TO MAINTAIN MAXIMUM PULLOUT STRENGTH. IF DURING INSTALLATION YOU ENCOUNTER SPECIAL WALL CONDITIONS THAT DO NOT ALLOW FOR DIRECT ATTACHMENT TO THE STUDS PLEASE CONSULT THE LOCAL AUTHORITY HAVING JURISDICTION.
3. MATERIAL MUST REACH 65°F MIN. TO 75°F MAX. 24 HOURS PRIOR TO INSTALLATION. THIS IS ESSENTIAL TO MINIMIZE EXPANSION AND CONTRACTION OF MATERIAL.
4. MODEL BL-100N IS SHIPPED WITH ALL END CAPS ATTACHED.
5. MODEL BL-200N IS SHIPPED PRE-ASSEMBLED WITH END CAPS AND ACROVYN COVER ATTACHED.
6. THIS MODEL HAS A MINIMUM LENGTH OF 12"[304.8mm]
7. FOR MORE INFORMATION ON BL-100N OR BL-200N BED LOCATORS SEE OUR WEBSITE AT www.c-sgroup.com.



MODEL: BL-100AN

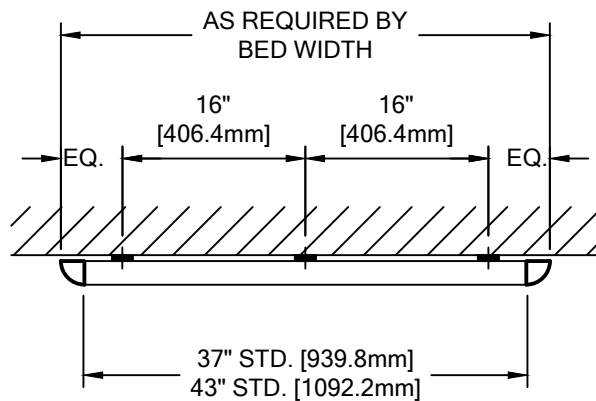


MODEL: BL-200AN

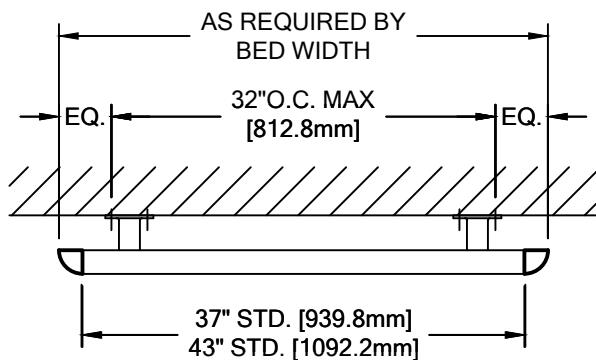


BL-100AN/200AN BED LOCATOR

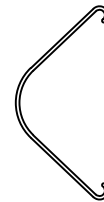
LAYOUT VIEW & COMPONENTS



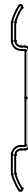
MODEL: BL-100AN



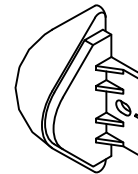
MODEL: BL-200AN



ACROVYN COVER
(24U130xxx)
ACROVYN WOODGRAINS
AND BRUSHED METALS COVER
(24U963xxx)



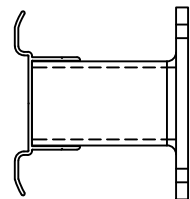
ALUMINUM RETAINER
(24A319000)



BED LOCATOR END CAP
(24I125xxx)
ACROVYN WOODGRAINS
AND BRUSHED METALS END CAP
(24I994xxx)



MOUNTING CUSHION
(24I066108)

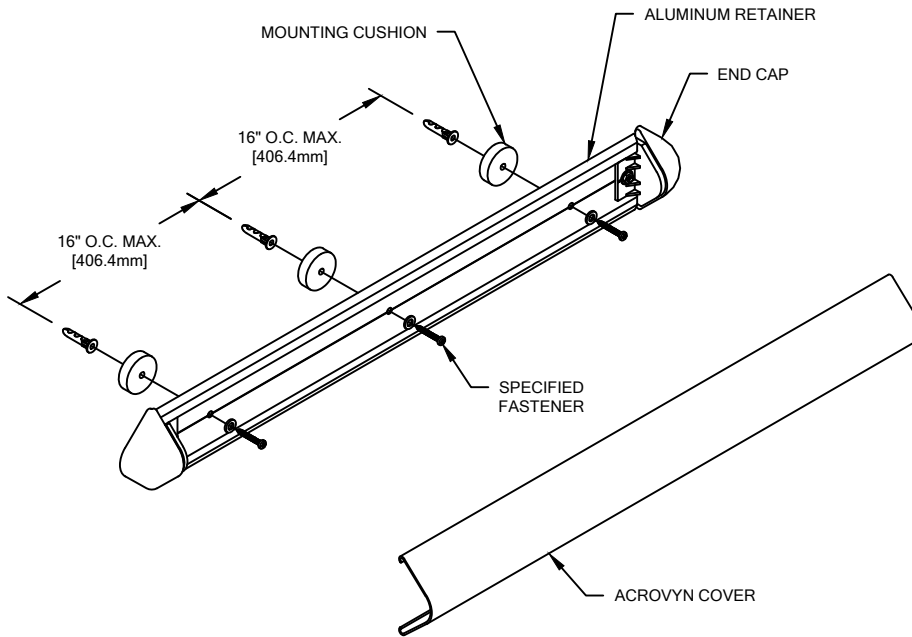


ALUMINUM BRACKET
ASSEMBLY

| WALL CONDITION | SPECIFIED FASTENER | DRILL DIAMETERS | | CS PART NUMBER |
|--|--|-----------------|----------|-------------------------------------|
| | | WALL | RETAINER | |
| STEEL STUD/GYPSUM WALL | #10 X 2" PHILLIPS PAN HEAD SMS 1/4" FLAT WASHER SAE AF-6 PLASTIC ANCHOR | 1/4" | 9/32" | 90H191002 90H007003 90H039004 |
| CONCRETE/CONCRETE BLOCK | #10 X 2" PHILLIPS PAN HEAD SMS 1/4" FLAT WASHER SAE AF-6 PLASTIC ANCHOR | 1/4" | 9/32" | 90H191002 90H007003 90H039004 |
| WOOD STUD/GYPSUM WALL | #10 x 2-1/4" PHILLIPS PAN HEAD SMS 1/4" FLAT WASHER STEEL PLATED SAE | N/A | N/A | 90H421008 90H007003 |
| 20 GA. MIN. STEEL STUD AND 20 GA. MIN. STEEL STRAPPING / GYPSUM WALL CONSTRUCTION REQUIRED (TEK SCREWS) | #6 X 1 5/8" PHILLIPS BUGLE HEAD TEK SCREW (BL200AN) #8 X 2 5/8" PHILLIPS BUGLE HEAD TEK SCREW (BL100AN) | N/A | 3/16" | 90H079002 90H079008 |

BL-100AN/200AN BED LOCATOR

TYPICAL ASSEMBLY



NOTE:

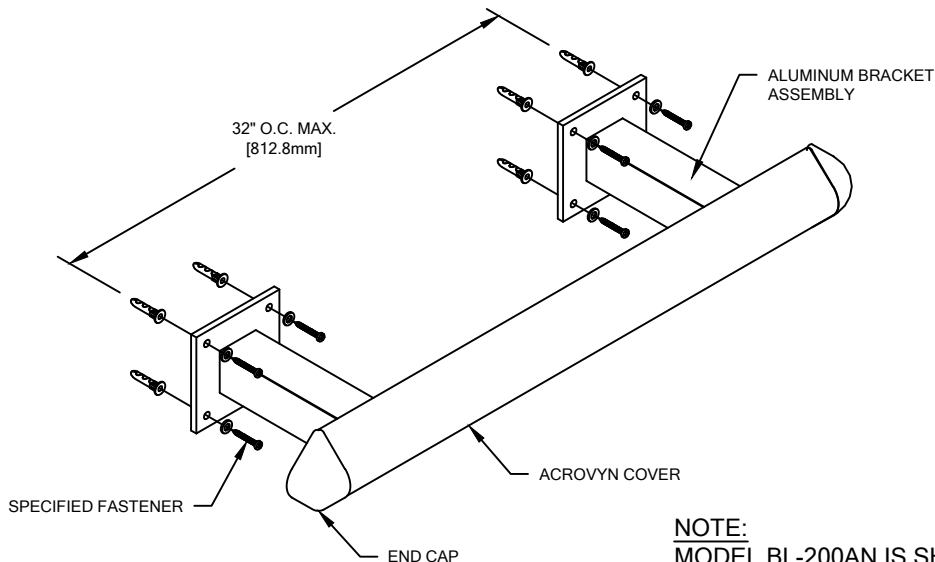
MODEL BL-100AN IS SHIPPED WITH ALL END CAPS ATTACHED.

MODEL BL-100AN

1. ESTABLISH BED LOCATOR HEIGHT ABOVE FINISH FLOOR. DEDUCT 2" [50.8mm] AND SNAP A CHALK LINE AT THAT LOCATION. THIS MARKS THE CENTERLINE OF THE BED LOCATOR FASTENERS.
2. USING THE ALUMINUM RETAINER AS A TEMPLATE, MARK THE HOLE LOCATIONS ALONG THE CHALK LINE AND DRILL HOLE DIAMETER, AS REQUIRED, AT THE PROPER LOCATIONS. REFERENCE CHART ON PAGE 2 FOR CORRECT DRILL DIAMETERS.
3. INSTALL EACH BED LOCATOR USING THE APPROPRIATE FASTENERS. USE A LEVEL TO ENSURE THAT RETAINER IS PLUMB.
4. INSTALL THE ACROVYN COVER BY ALIGNING THE TOP OF THE COVER WITH THE TOP OF THE ALUMINUM RETAINER AND SNAP THE BOTTOM PORTION ONTO THE LOWER SECTION OF THE RETAINER.

MODEL BL-200AN

1. ESTABLISH BED LOCATOR HEIGHT ABOVE FINISH FLOOR. DEDUCT 1/2" [12.7mm] AND SNAP A CHALK LINE AT THAT LOCATION. THIS MARKS THE LOCATION OF THE TOP PAIR OF FASTENERS REQUIRED FOR THIS UNIT.
2. USING THE BED LOCATOR ASSEMBLY AS A TEMPLATE, MARK THE HOLE LOCATIONS FOR THE MOUNTING HARDWARE AND DRILL HOLE DIAMETER, AS REQUIRED. REFERENCE CHART ON PAGE 2 FOR CORRECT DRILL DIAMETERS.
3. INSTALL BED LOCATOR USING THE APPROPRIATE FASTENERS. USE A LEVEL TO ENSURE THAT BED LOCATOR IS PLUMB.



NOTE:

MODEL BL-200AN IS SHIPPED PRE-ASSEMBLED WITH END CAPS AND ACROVYN COVER ATTACHED.