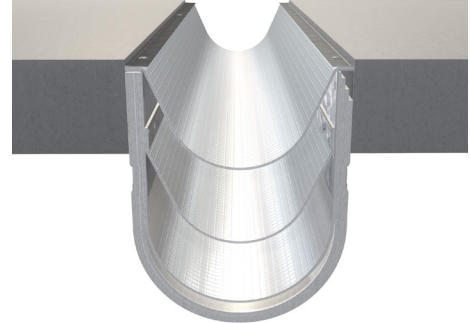


FB-97 Series

PRODUCT DESCRIPTION:

FB-97 fire barrier is multi-layer barrier designed for 7"- 36" nominal floor and wall expansion joints. FB-97 has been tested and proven to provide up to 2-hour fire endurance rating, minimize smoke passage and accommodate dynamic movement without degradation of the material. The barriers are listed with Underwriters Laboratories and meet most current building codes and testing criteria.



BASIC USES

For 7"- 36" nominal, horizontal and vertical rated expansion joints for buildings and parking decks. 2-hour rating (For floor expansion joints requiring lateral shear, see models indicated with LS).

TECHNICAL DATA

PERFORMANCE STANDARDS: UL-2079, ASTM E-1966, ASTM E1399, ASTM E-119 CODE COMPLIANCE: UBC, SBC, BOCA, IBC

STANDARD FINISH

Mill finish. Aluminum surfaces in contact with concrete will be protected with a minimum 2 mil coating of a heavy metal free high solids primer.

PRECAUTIONS

Refer to Material Safety Data Sheet for detailed health and safety information prior to use.

WARRANTY

CS warrants that its products are manufactured free of defects and conform to the technical data listed. Under this warranty, we will replace (at no charge) any material proven defective when applied in accordance with our written instructions for applications recommended by us as suitable for subject products. CS shall not be liable for any injury, loss or damage, direct or consequential, arising out of the use of the product.

RATING	NOMINAL JOINT SIZE	APPLICATION	COMPRESSION	EXTENSION	FB-97 LISTING NUMBER
2HR	7" - 12"	Floor	50%	50%	FF-D-2003
		Lateral Floor	80%	95%	FF-D-2004
	13" - 24"	Floor	50%	50%	FF-D-3005
		Lateral Floor	80%	95%	FF-D-3006
	25" - 36"	Floor	50%	50%	FF-D-4001
		Lateral Floor	80%	95%	FF-D-4002
	7" - 12"	Gypsum Wall	80%	90%	WW-D-2007
		Concrete Wall	80%	90%	WW-D-2008
	13" - 24"	Gypsum Wall	80%	90%	WW-D-3007
		Concrete Wall	80%	90%	WW-D-3008
	25" - 28"	Gypsum Wall	80%	90%	WW-D-4001
		Concrete Wall	80%	90%	WW-D-4002
	12" - 17"	Chase Wall	50%	100%	WW-D-2010
	18" - 24"	Chase Wall	80%	100%	WW-D-3009
25" - 36"	Chase Wall	80%	100%	WW-D-4003	