

PEDIMAT AA WITH RECESSED LEVEL BASE FRAME

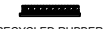



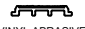
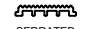

INSERT STYLE:

INSERT COLOR: PLEASE ADVISE

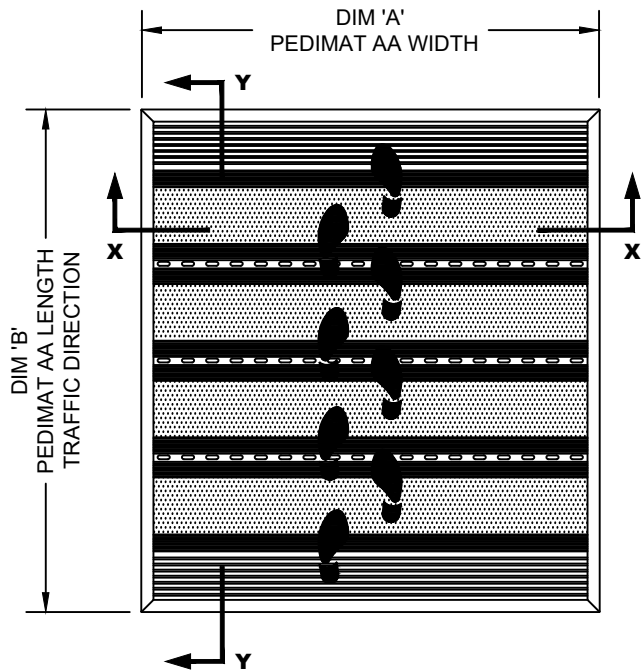
CATALOG NUMBER: M2

PART NUMBER:

NO.	REVISION	DATE	BY
NO.	F&F RELEASE	DATE	BY

- | | | | | | | |
|---|---|--|--|--|--|--|
| 
RECYCLED RUBBER
M2RR
19R005XXX | 
EXTERIOR CARPET
M2EC
19C018XXX | 
HEAVY-DUTY CARPET
M2HC
19C010XXX
19C022XXX | 
RUBBER
M2V
19V022501
#8501 BLACK | 
VINYL ABRASIVE
M2VA
19A007XXX
19M001XXX | 
SERRATED ALUM. INSERT
M2SAI
19A001001 | 
POURED ABRASIVE INSERT
M2PA
19A005XXX |
|---|---|--|--|--|--|--|

PEDIMAT AA INSERT STYLES



TYPICAL PLAN VIEW

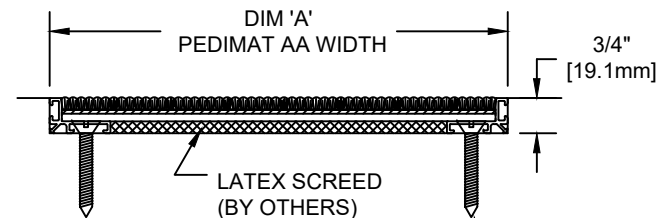
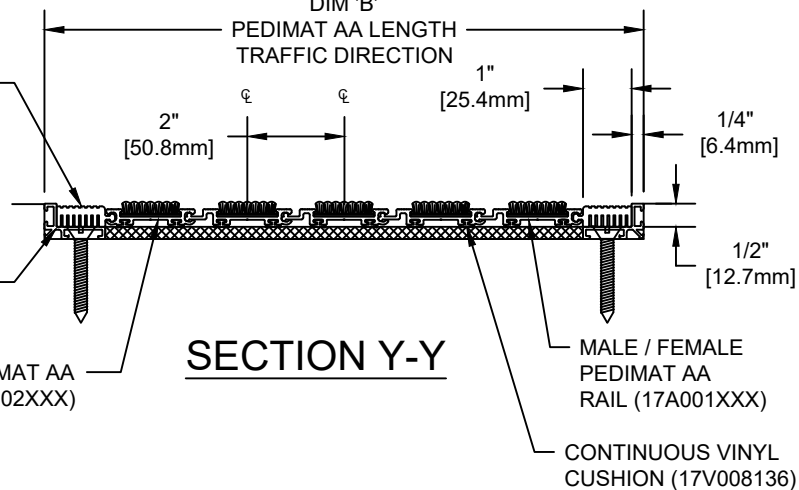
SQUARE END VINYL
1" (25.4mm) WIDE (17V013XXX)
2" (50.8mm) WIDE (17V014XXX)

ALUMINUM LEVEL
BASE FRAME (17A003XXX)

FEMALE PEDIMAT AA
RAIL (17A002XXX)

DIM 'B'
PEDIMAT AA LENGTH
TRAFFIC DIRECTION

SECTION Y-Y



SECTION X-X

MASONRY LAG
FASTENER
(90H066004)
24" (609.6mm) O.C

NOTES:

*ALL SURFACES IN CONTACT WITH MASONRY ARE TO RECEIVE A COAT OF ZINC CHROMATE PRIMER

*MAX. SINGLE GRID SIZE NOT TO EXCEED 12'-0" (3.66M) IN WIDTH (DIM "A") OR 100 SQUARE FEET

*PLEASE VERIFY TRAFFIC DIRECTION

*PEDIMAT AA SHALL BE ABLE TO SUPPORT A 350 LB. ROLLING LOAD. LARGER LOADING MAY BE ACCOMMODATED. CONTACT C/S SALES WITH SPECIFIC LOADING REQUIREMENTS.

*ADDITIONAL SPECIFICATIONS ARE CONTAINED IN THE LATEST C/S CATALOG OR AT C-SGROUP.COM AND ARE CONSIDERED PART OF THIS TRANSMITTAL.


Construction Specialties™
6696 Route 405 Highway, Muncy PA 17756
 (800) 233-8493 • Fax (570) 546-4692 • www.c-sgroup.com

PLEASE VERIFY ALL	QTY	MARK #	LOCATION	MODEL	DIM 'A' WIDTH	DIM 'B' LENGTH	FINISH	NOTES

PROJECT:		
LOCATION:		
CONTRACTOR:		
AGENT:		SHT:
DRG. BY:	DATE:	JOB NO.: