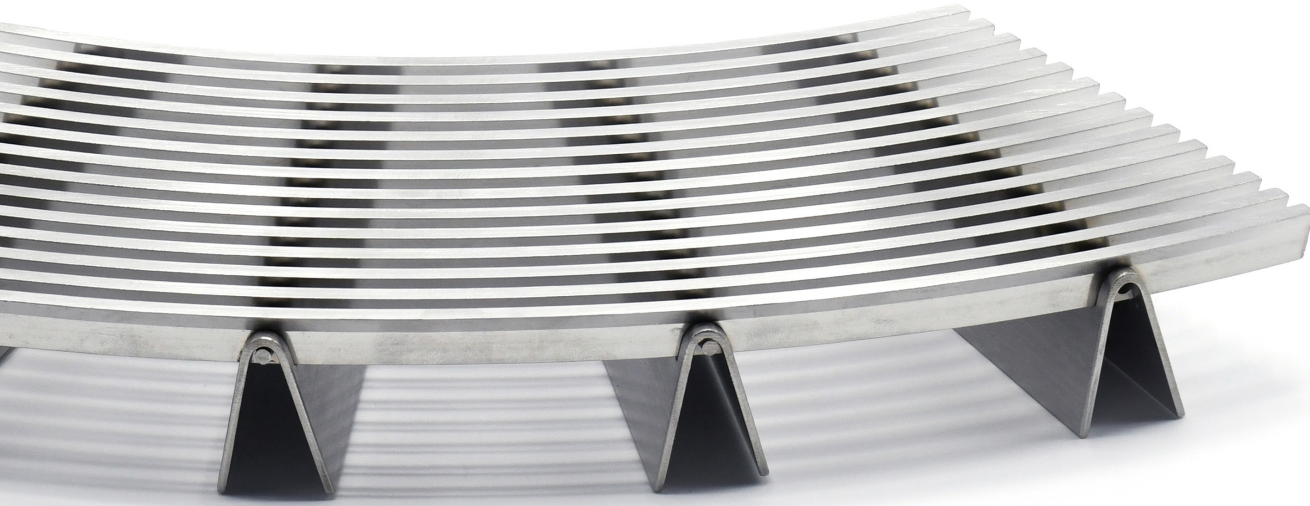


## GridLine® G6PR



Model GridLine G6PR

GridLine is a high-end, heavy-duty grid system that protects interior flooring and carpets by trapping incoming dirt and debris from pedestrian shoes. A sustainable option, designers and owners will love the high-tech appearance of the satin finish, and building owners will love the durability of stainless steel combined with easy maintenance. Our radius option is great for curved applications such as revolving doors.

### Advantages

- Wider rails for a bold appearance
- High-end, high-tech appearance
- Heavy duty & extremely durable
- Exceptional traction & scraping action
- Contains a significant amount of recycled material
- Removes dirt & debris from shoes
- Exhibits long life cycle
- Coordinates with other stainless-steel finishes
- Easy maintenance

### Building Segments

- Education
- Civic and Culture
- Corporate & Commercial
- Healthcare
- Hospitality
- Mixed Use
- Retail
- Sports & Convention Centers
- Transportation
- Landscape

### Applications

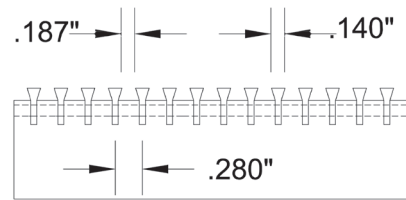
- Revolving doors
- Tree rings
- Interior/exterior radiused applications

# GridLine® G6PR

## Product Details

- Wire width: .140" (3.6mm)
- Wire spacing: .187" (4.7mm)
- Product depth
  - 5/8" (15.9mm)
  - 3/4" (19.1mm)
  - 1 1/8" (28.6mm)
- Alloy options:
  - Type 304
  - Type 316

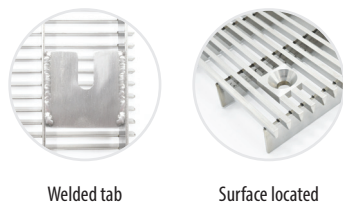
## Connection Details



## Certifications/Testing

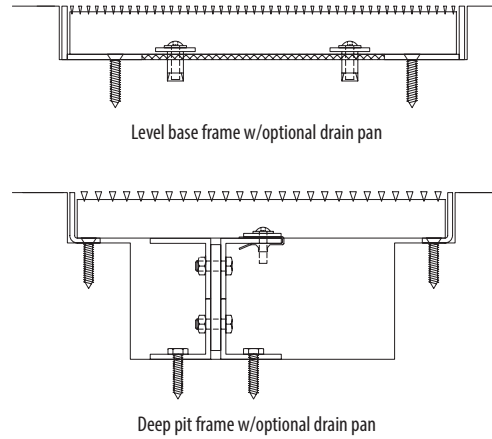
- Rolling load capacity: Standard 500 lbs. / wheel, Deep Pit Frame Applications is 300 lb./wheel
- ASTM D-2047-96 SCOF: 0.70 Wet
- LEED EQ credit 5
- Cradle 2 Cradle Certified™ Silver

## Lockdown Options

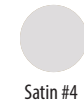


## Frame Options

- No Frame



## Standard Finish



## Optional Finishes

- Bead/sand blasted
- SlipNOT coated

See all frame and finish options online at [c-sgroup.com](http://c-sgroup.com).

## Warranty

- Five-Year Product Warranty



Learn More →