

# XLS & XLSC

**TECHNICAL DATA:**

**Aluminum**

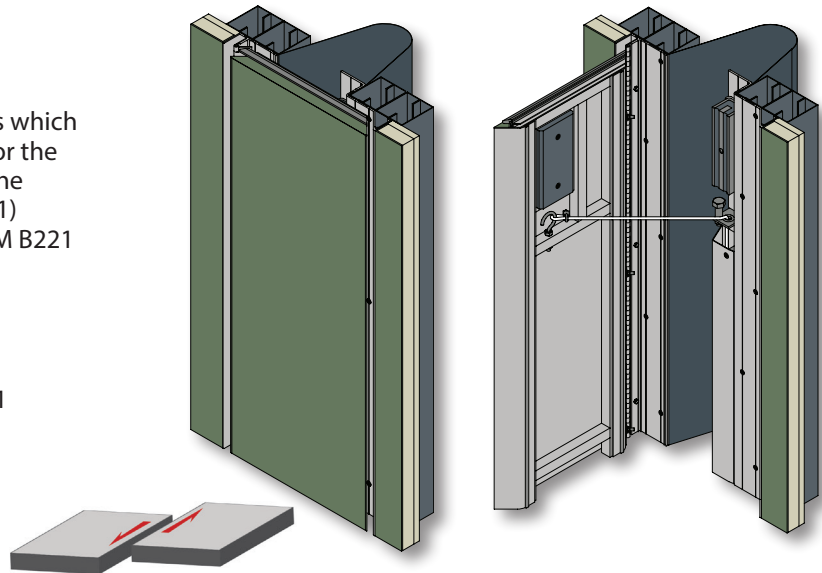
- Extrusion – CS uses multiple alloys & tempers which are established to be the most appropriate for the given use of individual parts. Will be one of the following: (6063-T5, T6, T52) (6061-T5, T6, T51) (6105-T5, T6) (6005-T5) (6005A-T5, T61), ASTM B221

**Stainless Steel**

- Continuous Hinge

**Vapor Barrier**

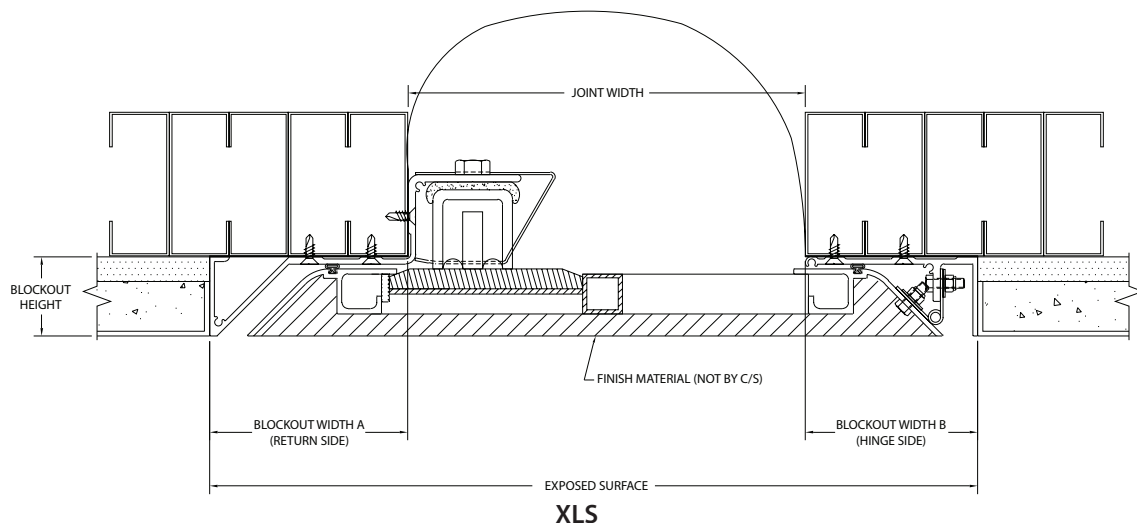
- Material: 7-Ply Polyethylene, ASTM-E-1745-11
- Color: Black
- 3" Tensile Strength: 275 lbs., ASTM-D-882
- Puncture Strength: 79 lbs., ASTM-D-4833
- PPT Resistance: 62 lbs., ASTM-D-2582



Capable of Lateral Movement

MODEL	JOINT WIDTH	MINIMUM OPENING	MAXIMUM OPENING	EXPOSED SURFACE	BLOCKOUT WIDTH "A"	BLOCKOUT HEIGHT	BLOCKOUT WIDTH "B"
XLS-2500	25.00" (635mm)	4.50" (114mm)	50.00" (1,270mm)	34.31" (871mm)	5.00" (127mm)	2.00" (51mm)	4.31" (109mm)
XLS-2600	26.00" (660mm)	4.50" (114mm)	52.00" (1,321mm)	35.31" (897mm)	5.00" (127mm)	2.00" (51mm)	4.31" (109mm)
XLS-2700	27.00" (686mm)	4.50" (114mm)	54.00" (1,372mm)	36.31" (922mm)	5.00" (127mm)	2.00" (51mm)	4.31" (109mm)
XLS-2800	28.00" (711mm)	4.50" (114mm)	56.00" (1,422mm)	37.31" (948mm)	5.00" (127mm)	2.00" (51mm)	4.31" (109mm)
XLS-2900	29.00" (737mm)	4.50" (114mm)	58.00" (1,473mm)	38.31" (973mm)	5.00" (127mm)	2.00" (51mm)	4.31" (109mm)
XLS-3000	30.00" (762mm)	4.50" (114mm)	60.00" (1,524mm)	39.31" (998mm)	5.00" (127mm)	2.00" (51mm)	4.31" (109mm)
XLS-3100	31.00" (787mm)	4.50" (114mm)	62.00" (1,575mm)	40.31" (1,024mm)	5.00" (127mm)	2.00" (51mm)	4.31" (109mm)
XLS-3200	32.00" (813mm)	4.50" (114mm)	64.00" (1,626mm)	41.31" (1,049mm)	5.00" (127mm)	2.00" (51mm)	4.31" (109mm)
XLS-3300	33.00" (838mm)	4.50" (114mm)	66.00" (1,676mm)	42.31" (1,075mm)	5.00" (127mm)	2.00" (51mm)	4.31" (109mm)
XLS-3400	34.00" (864mm)	4.50" (114mm)	68.00" (1,727mm)	43.31" (1,100mm)	5.00" (127mm)	2.00" (51mm)	4.31" (109mm)

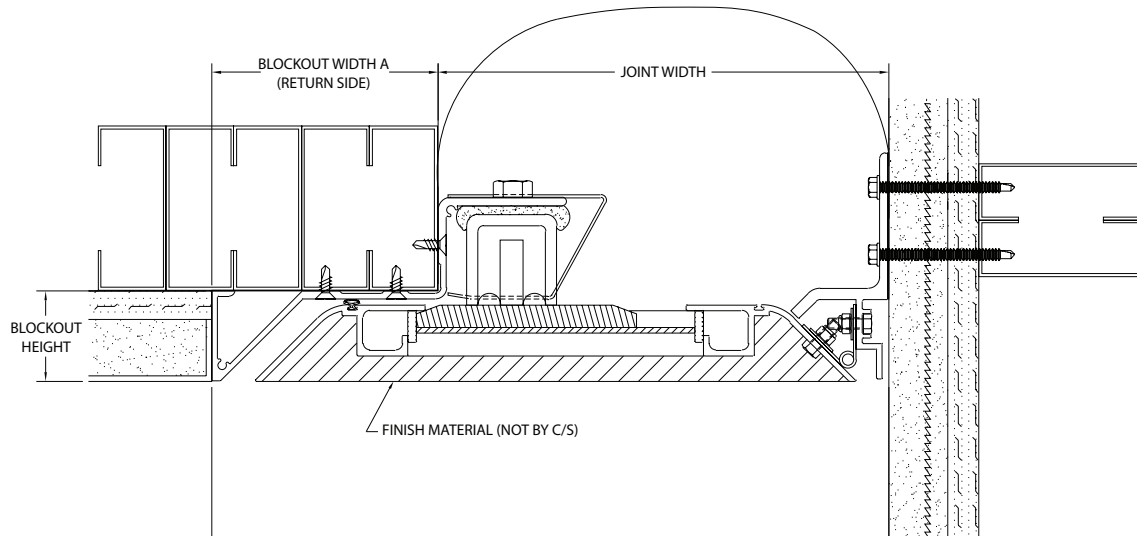
Contact factory for custom applications.



# XLS & XLSC

MODEL	JOINT WIDTH	MINIMUM OPENING	MAXIMUM OPENING	EXPOSED SURFACE	BLOCKOUT WIDTH "A"	BLOCKOUT HEIGHT	BLOCKOUT WIDTH "B"
XLSC-2500	25.00" (635mm)	4.50" (114mm)	50.00" (1,270mm)	30.00" (762mm)	5.00" (127mm)	2.00" (51mm)	N/A
XLSC-2600	26.00" (660mm)	4.50" (114mm)	52.00" (1,321mm)	31.00" (787mm)	5.00" (127mm)	2.00" (51mm)	N/A
XLSC-2700	27.00" (686mm)	4.50" (114mm)	54.00" (1,372mm)	32.00" (813mm)	5.00" (127mm)	2.00" (51mm)	N/A
XLSC-2800	28.00" (711mm)	4.50" (114mm)	56.00" (1,422mm)	33.00" (838mm)	5.00" (127mm)	2.00" (51mm)	N/A
XLSC-2900	29.00" (737mm)	4.50" (114mm)	58.00" (1,473mm)	34.00" (864mm)	5.00" (127mm)	2.00" (51mm)	N/A
XLSC-3000	30.00" (762mm)	4.50" (114mm)	60.00" (1,524mm)	35.00" (889mm)	5.00" (127mm)	2.00" (51mm)	N/A
XLSC-3100	31.00" (787mm)	4.50" (114mm)	62.00" (1,575mm)	36.00" (914mm)	5.00" (127mm)	2.00" (51mm)	N/A
XLSC-3200	32.00" (813mm)	4.50" (114mm)	64.00" (1,626mm)	37.00" (940mm)	5.00" (127mm)	2.00" (51mm)	N/A
XLSC-3300	33.00" (838mm)	4.50" (114mm)	66.00" (1,676mm)	38.00" (965mm)	5.00" (127mm)	2.00" (51mm)	N/A
XLSC-3400	34.00" (864mm)	4.50" (114mm)	68.00" (1,727mm)	39.00" (991mm)	5.00" (127mm)	N/A	N/A

Contact factory for custom applications.



XLSC