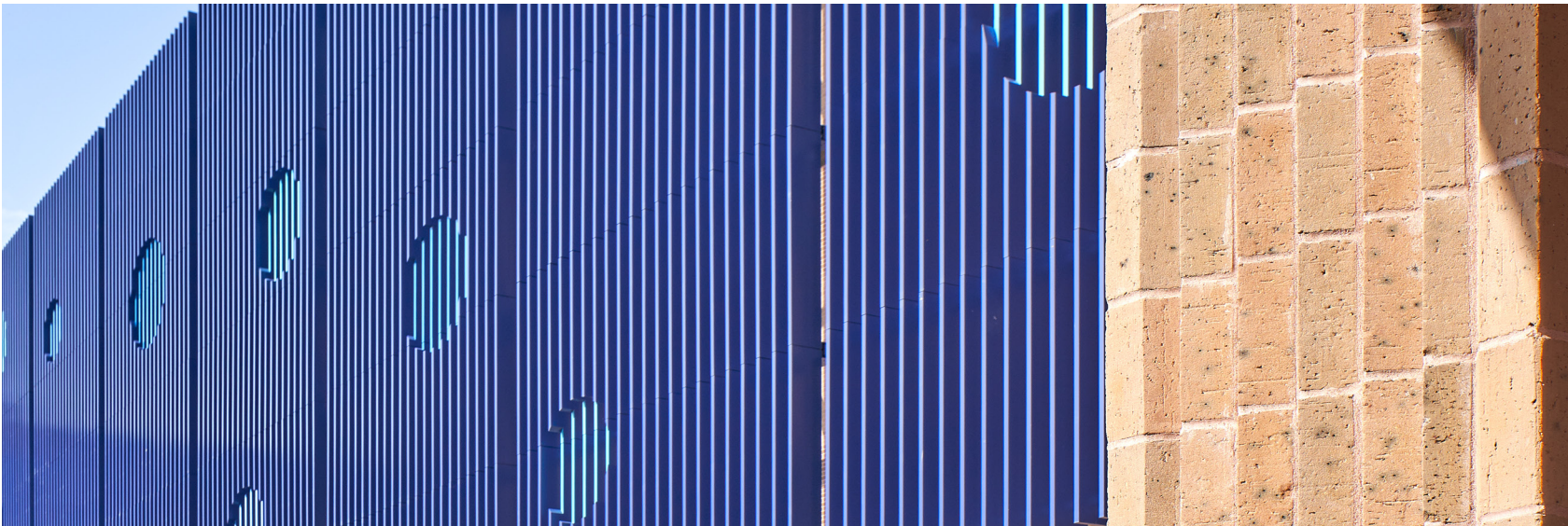


Linear Sunshades



Sun Controls are the best solution for reducing solar heat gain through exterior architectural solar shading. Linear sunshade systems can be mounted horizontally or vertically in front of the window to help shade the interior even when the sun is lowest on the horizon. The system can also function as a custom architectural element on the building. For our most personalized options, Facades by Design™ allows graphics, photography, branding, signage and more to be printed on these linear systems.

Advantages

- Blades can run horizontal or vertical
- Provides occupants visual and thermal comfort
- Minimizes direct solar heat gain to reduce cooling costs and the heat island effect
- Helps reduce glare
- Functions as an architectural feature for the building with highly customizable design options
- Nearly unlimited combination of blade and mounting solutions
- Blades are available in single and two-piece extrusions
- Fully engineered system is assembled for easy installation
- Optional LED Lux lighting
- Optional Facades by Design graphics, photography, branding and signage can be printed on the extrusions to create visual interest



Applications

- Any application where either solar (daylighting) control is required, custom architectural accents are desired, or a functioning vision barrier is needed.

Linear Sunshades

Product Details

- Mounted via flat plate outriggers or via bird mouth casting back to structure
- Blades can be set at varying angles
- All hardware and mounting components included

Finish Options



See all finish options online at [c-sgroup.com](https://www.c-sgroup.com).

Warranty

- 1-year Material Warranty
- 20-year Finish Warranty (excludes anodized)
- 10-year Finish Warranty Wood Grain
- 10-year Finish Warranty Facades by Design

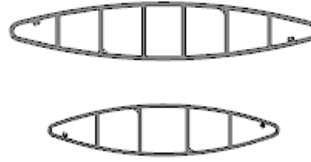
BLADE TYPE	WIDTH	DEPTH	MAX LENGTH*
1-Piece Airfoil	3" - 12" (76.2mm - 304.8mm)	1" - 2" (25.4mm - 50.8mm)	20' (6.10m)
Two-Piece Airfoil	14" - 24" (355.6mm - 609.6mm)	2 3/8" - 4 1/2" (60.3mm - 114.3mm)	14' (4.27m)
Long-Span Airfoil	6" - 12" (152.4mm - 304.8mm)	2" - 3" (50.8mm - 76.2mm)	20' (6.10m)
Rectangle**	6" - 20" (152.4mm - 508mm)	2" - 2 1/2" (50.8mm - 63.5mm)	14' - 20' (4.27m - 6.10m)
XL 1-Piece Airfoil	18" - 24" (457.2mm - 609.6mm)	4" - 4 1/2" (101.6mm - 114.3mm)	20' (6.10m)

* Max length will vary based on wind load, connection type, shop limitation, finishing, and shipping restrictions

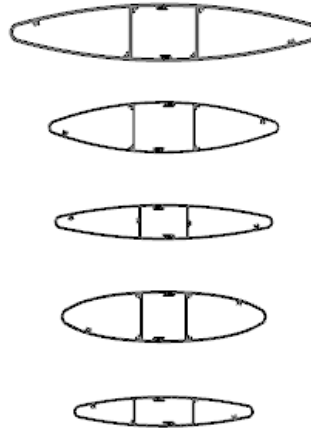
** 20" Rectangle is a single-piece extrusion

Blade Profiles

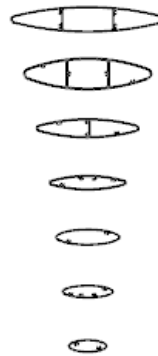
XL One-Piece Airfoil



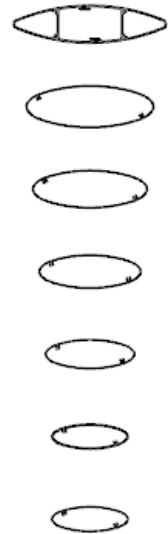
Two-Piece Airfoil



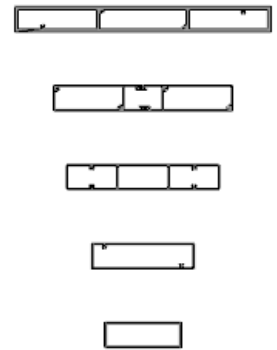
One-Piece Airfoil



Long-Span Airfoil



Rectangle



Learn More →