

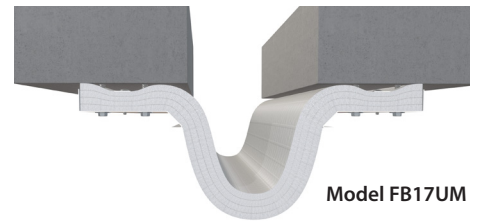
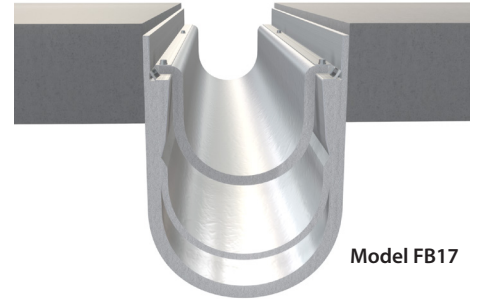
# FB-17 Series

**PRODUCT DESCRIPTION:**

The FB-17 Series are blanket type fire barriers that minimize smoke passage and accommodate dynamic movement without degradation of the material.

FB-17 is designed for 30" (maximum open) floor and 30" (maximum open) wall expansion joints. Proven and tested to provide 2-hour and 3-hour floor and wall fire endurance rating. The barriers are third-party listed and will meet most current building codes and criteria.

FB-17UM (under mount application) is fire barrier mounted to the underside of a rated floor construction and is designed for 30" (maximum open) floor expansion joints. Proven and tested to provide 2-hour floor fire endurance rating. FB-17UM is third-party listed and will meet most current building codes and criteria.



**BASIC USES**

FB-17: for 30" (maximum open) floor horizontal rated expansion joints in buildings and parking decks, and 30" (maximum open) wall vertical rated expansion joints in buildings, with 2-hour and 3-hour ratings.

FB-17UM: for 30" (maximum open) floor horizontal rated expansion joints in buildings and parking decks with 2-hour ratings.

**TECHNICAL DATA**

PERFORMANCE STANDARDS: UL-2079, ASTM E-1966,  
 ASTM E1399 CODE COMPLIANCE: UBC, SBC, BOCA, IBC

**PRECAUTIONS**

Refer to Material Safety Data Sheet for detailed health and safety information prior to use.

**WARRANTY**

CS warrants that its products are manufactured free of defects and conform to the technical data listed. Under this warranty, we will replace (at no charge) any material proven defective when applied in accordance with our written instructions for applications recommended by us as suitable for subject products. CS shall not be liable for any injury, loss or damage, direct or consequential, arising out of the use of the product.

RATING	MAX OPEN	APPLICATION	FB-17 LISTING NUMBER
2HR	9" - 30"	Floor or Lateral Floor	CSI/EJCA-120-01
		Gypsum/CMU Wall	CSI/EJCA-120-02
	9"	Undermount Floor	FF-D-1223
		Undermount Lateral Floor	FF-D-1224
	12" - 18"	Undermount Floor	FF-D-2028
		Undermount Lateral Floor	FF-D-2029
21" - 30"	Undermount Floor	FF-D-3021	
	Undermount Lateral Floor	FF-D-3022	

RATING	MAX OPEN	APPLICATION	FB-17 LISTING NUMBER
3HR	9" - 30"	Floor or Lateral Floor	CSI/EJCA-180-01
		CMU Wall	WW-D-2034
	9" - 18"	Gypsum Wall	WW-D-2032
		CMU Wall	WW-D-3030
	21" - 30"	Gypsum Wall	WW-D-3029