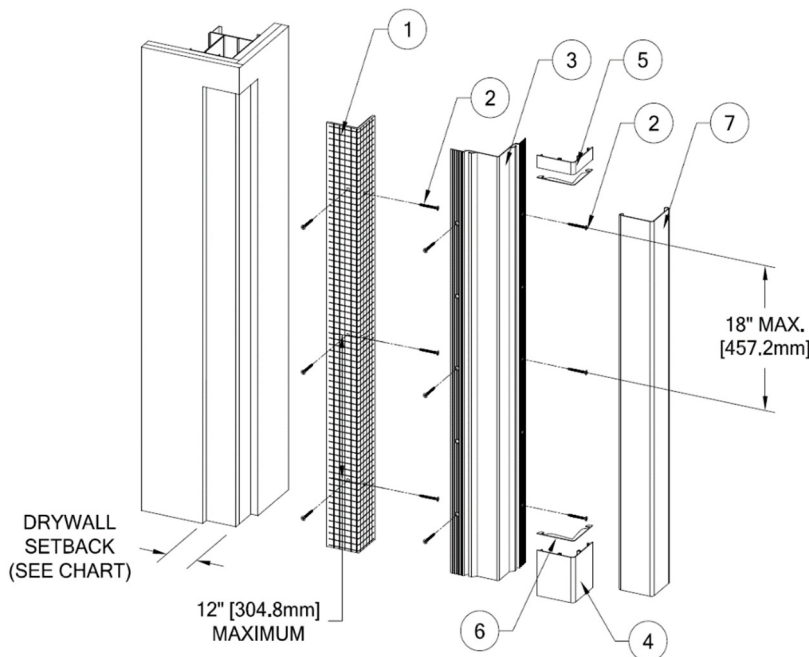
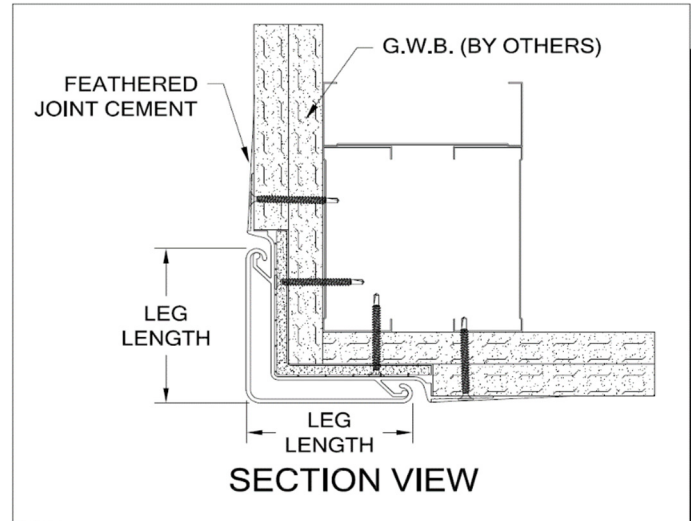


ATTENTION

Please read these instructions thoroughly prior to beginning the **2 HR FIRE RATED CORNER GUARD** installation!

This instruction sheet is intended to provide a specific guide to follow for the installation of the **2 HR FIRE RATED CORNER GUARDS**. Contained within is the technical information and installation techniques required to complete an efficient, neat, and long-lasting installation.

See "**Corner Guard– Supplemental Information**" sheet for additional notes and other helpful installation tips.



Parts List

1. Fire Barrier
2. Specified Fastener
3. Aluminum Retainer
 - a. FS-10R/FS-20R (24A155000)
 - b. SFS-10R/SFS-20R (24A156000)
 - c. FS-10MR 135° (24A155000 split retainer)
4. Aluminum Base plate
 - a. 4" base
 - i. FS-20R (24F009000)
 - ii. FS-10R (24F008000)
 - iii. SFS-20R (24F012000)
 - iv. SFS-10R (24F011000)
 - v. FS-10MR (24F010000)
 - b. 6" base
 - i. FS-20R (24F146000)
 - ii. FS-10R (24F145000)
 - iii. SFS-20R (24F144000)
 - iv. SFS-10R (24F147000)
 - v. FS-10MR (24F149000)
5. 1" Closure cap (for partial height only)
 - a. FS-20R (24F062000)
 - b. FS-10R (24F094000)
 - c. SFS-20R (24F063000)
 - d. SFS-10R (24F093000)
 - e. FS-10MR (24F096000)
6. Black Acrovyn Gasket (2 for partial height)
 - i. FS-20R (24M010000)
 - ii. FS-10R (24M009000)
 - iii. SFS-20R (24M012000)
 - iv. SFS-10R (24M011000)
 - v. FS-10MR (24M018000)
7. Acrovyn Cover
 - a. FS-20R Solid color (24U002xxx)
 - b. FS-20R Chameleon color(24U634xxx)
 - c. FS-10R Solid color (24U130xxx)
 - d. FS-10R Chameleon color (24U963xxx)
 - e. SFS-20R Solid color (24U004xxx)
 - f. SFS-20R Chameleon color (24U622xxx)
 - g. SFS-10R Solid color (24U007xxx)
 - h. SFS-10R Chameleon color (24U676xxx)
 - i. FS-10MR Solid color (24U130xxx)
 - j. FS-10MR Chameleon color (24U963xxx)

Hughesville, PA | 800.233.8493 | 570.546.5941
 Mississauga, ON | 888.895.8955 | 905.274.3611

www.c-sgroup.com
IWPTechSupport@c-sgroup.com

INSTALLATION INSTRUCTIONS

1. All Flush Mounted 'Fire Rated' Corner guards are shipped with aluminum retainers and Acrovyn covers cut-to-length, with factory drilled holes in the retainer. The Fire Barrier is shipped 1/2" [12.7mm] longer than the retainer.
2. The specified block-out (see chart below) dimensions for each corner guard assembly must be maintained, to ensure the Fire-Rated integrity of the specified wall construction. Prior to installation, the block-out dimension at each corner guard location should be checked and corrected if necessary.
3. Secure the factory fabricated fire barrier material in the opening by installing the required fasteners through the pre-punched holes in the fire barrier into the steel studs of the fire rated wall construction.
4. Align each retainer with the corner and secure each leg through wall into metal/wood studs using the specified fasteners. Make sure the retainer remains plumb with the finish floor.
 Note: If the condition is for an odd angle application, the retainer maybe split along the entire length. For this installation, it may be necessary to use the aluminum base closure to help in the alignment of the split retainers.
5. Insert aluminum base closure at the base of the retainer and secure the Acrovyn gasket on top by removing the protective covering to expose the transfer adhesive. Align gasket with outside edge.
6. A 1" [25.4mm] closure cap is to be installed at the top of the retainer on partial height guards following procedures similar to step 5 above.
7. Apply 2" [50.8mm] joint tape along the edge of the drywall and the aluminum retainer. Finish the installation by applying a uniform feathered joint at this location as per standard construction practices. Allow to dry and then sand as required. Apply additional coats as required to provide a uniform and neat finish. Apply this procedure to any "closure" caps used on partial height installations.
8. Finish wall surface as specified. Be sure that the selected finish is applied to the inside surface of the rear "contoured" portion of the aluminum retainer.

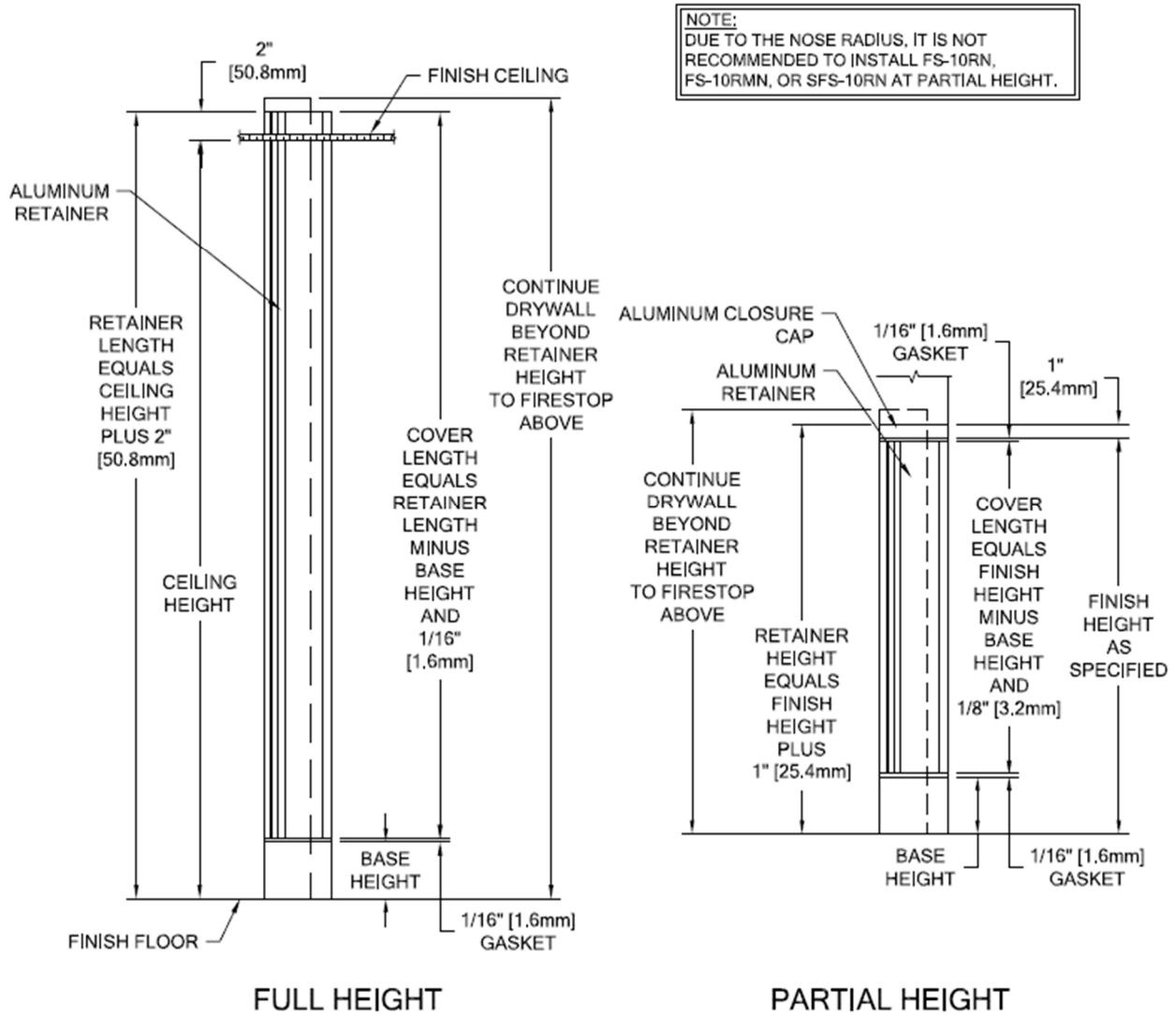
NOTE: On SFS models, apply 3/4" foam tape to the nose of the retainer (90M008002C).

9. Finish installation by snapping the Acrovyn cover onto the retainer.

| Drywall Setback Chart | | | | |
|-----------------------|----------------------|--------------------|--------------------|--------------------|
| FS-102RN | FS-10M2RN | FS-202RN | SFS-102RN | SFS-202RN |
| 2 5/8" [66.7mm] | 2 13/16" [71.4mm] | 2 5/8" [66.7mm] | 1 5/8" [41.3mm] | 1 5/8" [41.3mm] |

Hughesville, PA | 800.233.8493 | 570.546.5941
 Mississauga, ON | 888.895.8955 | 905.274.3611

www.c-sgroup.com
IWPTechSupport@c-sgroup.com



| WALL CONDITION | SPECIFIED FASTENER | DRILL DIAMETER | | | CS PART NUMBER |
|---|----------------------------|----------------|----------|------------|----------------|
| | | WALL | RETAINER | F. BARRIER | |
| STEEL STUD/GYPSUM WALL WOOD STUD/GYPSUM WALL | #6 X 1 5/8" BUGLE HEAD SMS | N/A | N/A | N/A | 90Ho79002 |

Hughesville, PA | 800.233.8493 | 570.546.5941
 Mississauga, ON | 888.895.8955 | 905.274.3611

www.c-sgroup.com
IWPTechSupport@c-sgroup.com

© Copyright 2018 Construction Specialties, Inc.