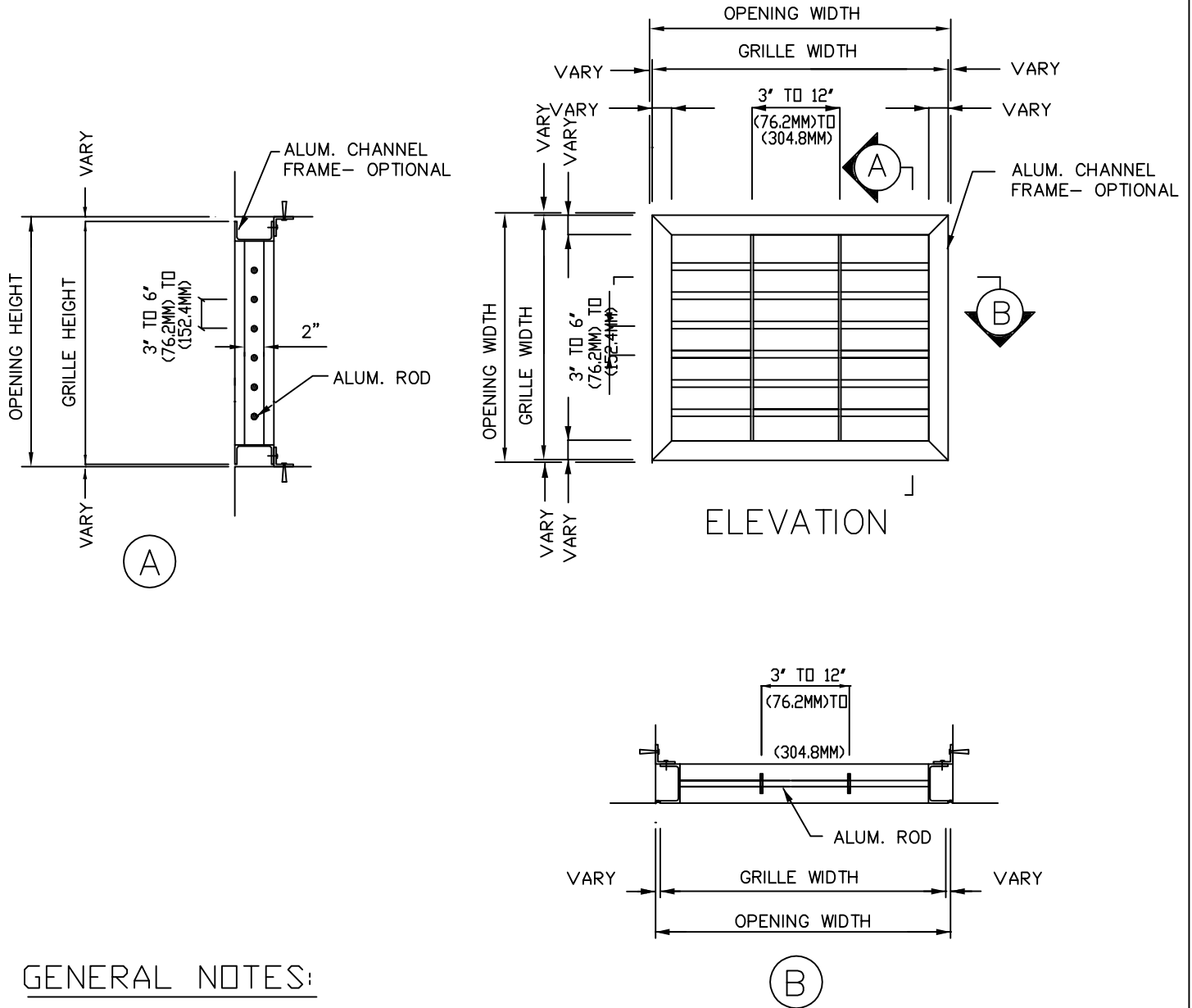



# SENTRY



## GENERAL NOTES:

ALUMINUM GRILLE SHALL BE C/S SENTRY GRILLE- AS MANUFACTURED BY CONSTRUCTION SPECIALTIES, INC. ALUMINUM COMPONENTS SHALL BE EXTRUDED ALUMINUM OF 6063-T5 ALLOY. ALL FASTENERS TO BE STAINLESS STEEL.

Revisions				Drawn By	Job	
No.	Date	By		Checked By	Contr.	
				Date Approv	Arch't.	
				Scale	Agent:	Sheet BF
				Date	 <b>CONSTRUCTION SPECIALTIES, INC.</b> 49 MEYER AVENUE, CRANFORD, NEW JERSEY	
					Drawing No.	