

ECR-20S CRASH RAIL

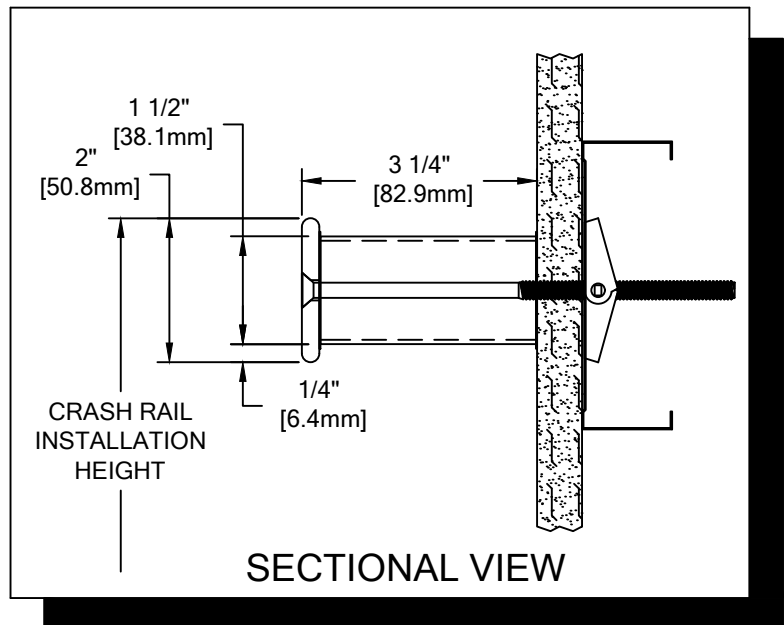
PLEASE READ

PLEASE READ THESE INSTRUCTIONS THOROUGHLY PRIOR TO BEGINNING THE ECR-20S CRASH RAIL INSTALLATION!

THIS INSTRUCTION SHEET IS INTENDED TO PROVIDE A SPECIFIC GUIDE TO FOLLOW FOR THE INSTALLATION OF THIS ECR-20S CRASH RAIL. CONTAINED WITHIN IS THE TECHNICAL INFORMATION AND INSTALLATION TECHNIQUES REQUIRED TO COMPLETE AN EFFICIENT, NEAT AND LONG-LASTING INSTALLATION.

INSPECT ALL MATERIALS FOR DAMAGE OR MISSING PARTS. IF YOU DISCOVER DAMAGED OR MISSING MATERIALS, IN THE USA PLEASE NOTIFY THE FACTORY AT (800) 233-8493, AND IN CANADA (888) 895-8955 FOR CUSTOMER SERVICE.

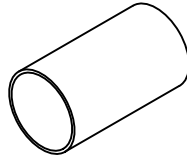
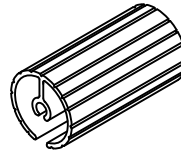
ECR-20S CRASH RAIL MUST BE INSTALLED IN ACCORDANCE WITH THESE INSTRUCTIONS! FAILURE TO FOLLOW THESE INSTRUCTIONS MAY VOID ANY PRODUCT WARRANTIES AND RESULT IN AN UNSUCCESSFUL INSTALLATION. FOR SPECIFIC QUESTIONS REGARDING THE INSTALLATION OF THIS ECR-20S CRASH RAIL PLEASE CALL THE FACTORY IN THE USA AT (800) 233-8493 OR EMAIL IWPTECHSUPPORT@C-SGROUP.COM. IN CANADA CALL (888) 895-8955 .



IMPORTANT NOTES

1. THIS MATERIAL HAS BEEN MANUFACTURED TO CUSTOMER SPECIFIED DIMENSIONS AND CAN NOT BE CUT OR MODIFIED ON SITE. TO DO SO COULD VOID THE WARRANTY.
2. ALL DIMENSIONS ARE TYPICAL.
3. FOR DRYWALL/PLASTER WALL CONSTRUCTION, IT IS RECOMMENDED FOR FASTENERS TO BE ENGAGED INTO METAL/WOOD STUDS TO MAINTAIN MAXIMUM PULLOUT STRENGTH. IF DURING INSTALLATION YOU ENCOUNTER SPECIAL WALL CONDITIONS THAT DO NOT ALLOW FOR DIRECT ATTACHMENT TO THE STUD PLEASE CONSULT THE LOCAL AUTHORITY HAVING JURISDICTION.
4. MATERIAL MUST REACH 65°F MIN. TO 75°F MAX. 24 HOURS PRIOR TO INSTALLATION. THIS IS ESSENTIAL TO MINIMIZE EXPANSION AND CONTRACTION OF MATERIAL.
5. MAY REQUIRE USE OF FIRE PUTTY WHEN INSTALLED ON FIRE WALL WITH TOGGLE BOLTS.
6. THIS HANDRAIL REQUIRES A MINIMUM OF 2 MOUNTING BRACKETS PER UNIT. THE MINIMUM LENGTH THAT CAN MANUFACTURED IS 13" [330.2mm] FROM OUTSIDE OF END RETURN TO END RETURN.
7. FOR MORE INFORMATION ON ECR-20S CRASH RAIL SEE OUR WEBSITE AT www.c-sgroup.com.

ECR-20S CRASH RAIL
COMPONENTS & FASTENERS

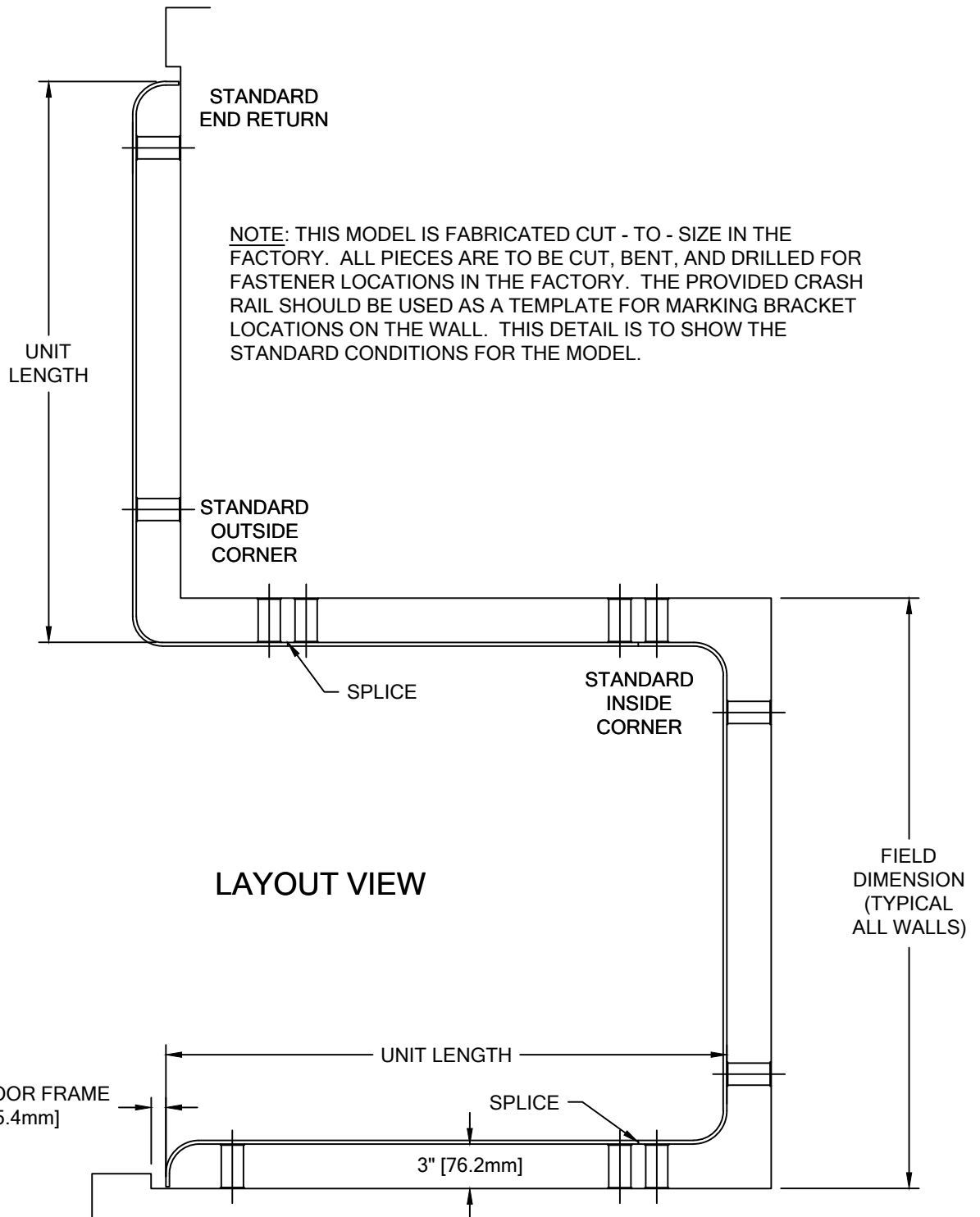
 ECR-20S CRASH RAIL
(24S131000)

 STAINLESS STEEL
PIPE BRACKET
(24S122000)

 SPLINE BRACKET
INSERT
(24F220000)

 NEOPRENE GASKET
(90H243010)

WALL CONDITION	SPECIFIED FASTENER	DRILL DIAMETERS		CS PART NUMBER
		WALL	RETAINER	
STEEL STUD/GYPSUM WALL	1/4-20 X 6" S/S PHILLIPS FLAT HEAD MS 1/4-20 TOGGLER	3/4"	N/A	90H307002 90H019004
CONCRETE/CONC. BLOCK	1/4-20 X 5" S/S PHILLIPS FLAT HEAD MS 1/4-20 X 1 1/4" 4-WAY LEAD SHIELD	1/2"	N/A	90H308002 90H020004
WOOD STUD/GYPSUM WALL	#14 X 6" PHILLIPS FLAT HEAD S/S WOOD SCREW	3/16"	N/A	90H524002

ECR-20S CRASH RAIL

LAYOUT VIEW

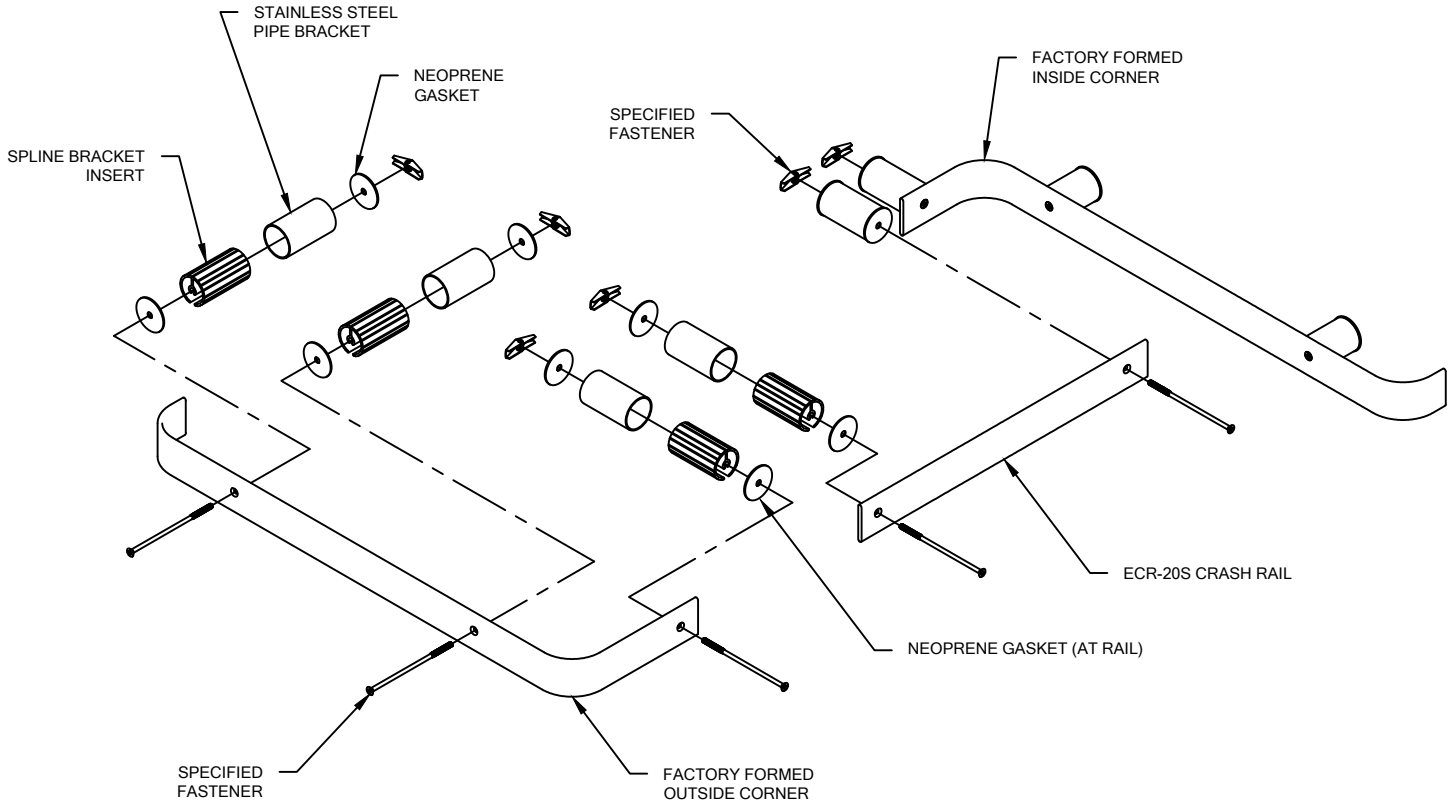


NOTE: THIS MODEL IS FABRICATED CUT - TO - SIZE IN THE FACTORY. ALL PIECES ARE TO BE CUT, BENT, AND DRILLED FOR FASTENER LOCATIONS IN THE FACTORY. THE PROVIDED CRASH RAIL SHOULD BE USED AS A TEMPLATE FOR MARKING BRACKET LOCATIONS ON THE WALL. THIS DETAIL IS TO SHOW THE STANDARD CONDITIONS FOR THE MODEL.

SETBACK FROM DOOR FRAME
TYPICAL 1" [25.4mm]

ECR-20S CRASH RAIL

TYPICAL ASSEMBLY



1. DISTRIBUTE MATERIAL. MATCH THE NUMBER ON THE BACK OF THE RAIL TO THE MARK NUMBER ON THE DRAWING. SOME LARGE RUN REQUIRE MORE THAN ONE PIECE OF CRASH RAIL. THESE ARE NOTED WITH A MARK NUMBER AND A LETTER, I.E. 2001A, 2001B.
2. ESTABLISH CRASH RAIL HEIGHT ABOVE THE FINISHED FLOOR. DEDUCT 1" [25.4mm] AND SNAP A CHALK LINE AT THAT HEIGHT. THIS MARKS THE CENTERLINE OF THE FASTENERS FOR THE CRASH RAIL.
3. DRILL CLEARANCE HOLES IN WALL SURFACE FOR MOUNTING HARDWARE, USING THE CRASH RAIL AS A TEMPLATE. REFERENCE CHART ON PAGE 2 FOR CORRECT DRILL DIAMETERS.
4. INSTALL EACH SECTION OF CRASH RAIL, IN SUCCESSION, USING THE NEOPRENE GASKETS, SPLINE BRACKET INSERTS, PIPE BRACKETS AND THE APPROPRIATE HARDWARE. USE A LEVEL TO ENSURE CRASH RAIL IS LEVEL.
5. TIGHTEN ALL FASTENERS AND REMOVE PROTECTIVE COATING FROM RAIL TO COMPLETE INSTALLATION.