

**Project:** W.H. and Elaine McCarty South Tower,  
Dell Children's Medical Center of Central Texas

**Location:** Austin, TX

**Architect:** Polkington Group Architects, Inc. – Austin, TX

**Products:** Acrovyn® Interior Wall Protection, Acrovyn® Doors,  
Pedisystems®, Expansion Joint Covers



## About the Project

The W.H. and Elaine McCarty South Tower of Dell Children's Medical Center of Central Texas (DCMCCT) in Austin, Texas opened its doors to the public May 2013 after just 15 months of construction. The \$48 million project includes a new three-story tower totaling 83,610 square feet with 72 beds. This is the region's first and only acute care pediatric rehabilitation unit, featuring dedicated inpatient care, a toddler rehab and a therapy gym. It also includes a state-of-the-art epilepsy monitoring unit and numerous family-centric features. Children benefit from continuing their education and social interaction that the community rooms provide. Designers also incorporated a family business center to allow parents to work on site.

## Design Goals

Creating an environmentally responsible facility was at the core of the design goals that Polkington Group Architects Inc. had for the W.H. and Elaine McCarty South Tower. Sustainable environments benefit hospitals for not only the health of the environment but all who come in contact with it as well. Seton Healthcare Family's commitment to making Dell Children's Medical Center one of the most sustainable hospitals in the world brought top designers and responsible manufacturers together to create an atmosphere where human health can flourish.

Product design and durability are critical to ensure long life and to support a more sterile environment. Selecting products that contain safe and healthy materials is equally important. DCMCCT's commitment to build for a healthy environment made Construction Specialties a natural choice to provide suitable building products for the new tower.

## Results

In 2008 the DCMCCT became the world's first Leadership in Energy & Environmental Design (LEED) certified Platinum hospital. This new addition has earned another first by achieving LEED for Healthcare Platinum designation, keeping in line with the hospital's efforts toward a more sustainable built environment. C/S products that helped the project earn this accolade include *Cradle to Cradle Certified*<sup>CM</sup> Silver Acrovyn® interior wall protection, PediTred® LP entrance flooring and expansion joint cover systems as well as Acrovyn® Doors. Additionally the Acrovyn® interior wall protection and PediTred® LP products carry the C/S building product transparency label.

## At a Glance

- Wall protection in *Cradle to Cradle Certified*<sup>CM</sup> Gold or Silver Acrovyn 4000 as well as Renaissance hardwoods and stainless steel
- *Cradle to Cradle Certified*<sup>CM</sup> Silver C/S PediTred® entrance grids
- Non-rated, 45-minute rated and 90-minute fire rated Acrovyn Doors
- Wall, ceiling and floor C/S Expansion Joint covers with RFX fire barrier



Construction Specialties™

[www.c-sgroup.com](http://www.c-sgroup.com)

1.800.233.8493



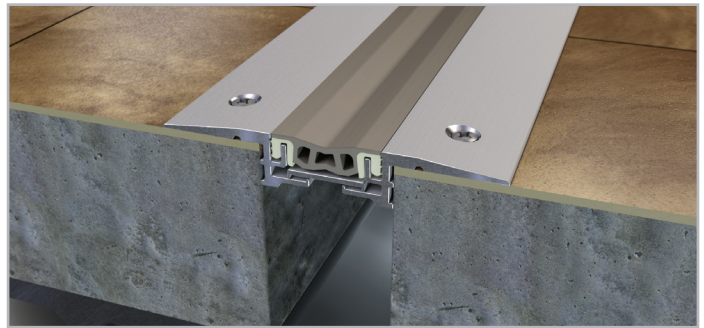
The architect chose high-impact Acrovyn® interior wall protection to help reduce future damage and maintenance costs as well as to create a dramatic and stunning look. Acrovyn® products are free of PVC (polyvinyl chloride), PBTs (persistent bioaccumulative toxins), BPA (bisphenol A) and all halogenated fire-retardants. This offering is available in a vast array of colors, patterns, textures and materials.



Acrovyn® Doors were chosen for use in selected locations in order to solve prior issues with damage to wood veneer and plastic laminate doors. Designed for durability, these doors can handle the extreme abuse that occurs in the hospital environment. Both fire-rated and non-rated, Acrovyn® Doors are available in a variety of styles and the same stunning colors and patterns as Acrovyn® interior wall protection to coordinate with any interior décor.



The designer chose PediTred® LP based on its ability to make a stunning first impression and greatly reduce trip/fall accidents by stopping 98.6% of dirt and water at the door. Chosen in vibrant Eggplant to perfectly blend with the planned decor, PediTred® LP has a smooth rolling surface that can withstand the heavy wheel loads of the healthcare environment. Ultimately PediTred® LP achieved the goal of improving indoor air quality and significantly reducing floor cleaning costs.



Hospitals require the most advanced movement technology to keep their patients safe and their facilities free from cracks and gaps. C/S Expansion Joint Covers were used in the bed tower's ceilings, walls, and floors to manage movement from wind sway, settlement and thermal expansion and contraction.

In addition to receiving LEED-HC Platinum certification, the W.H. and Elaine McCarty South Tower was also recognized with multiple honors:

- Awarded Austin Energy Green Building's 5-Star rating, its highest distinction
- Received 2013 Environmental Excellence's Partner Recognition Award from Practice Greenhealth, a national association dedicated to environmentally responsible healthcare
- Featured as one of 55 noteworthy global sustainable healthcare projects in Robin Guenther and Gail Vittori's *Sustainable Healthcare Architecture, Second Edition*
- Included by green building experts Jerry Yudelson and Ulf Meyer as one of the 56 best global, sustainable design practices for high-performance non-residential buildings in their book, *The World's Greenest Buildings: Promise vs. Performance in Sustainable Design*