

Project: JetBlue Airways Terminal
at JFK International Airport

Location: New York, NY

Architect: Gensler

Products: GridLine® and PediTred®



Project Overview

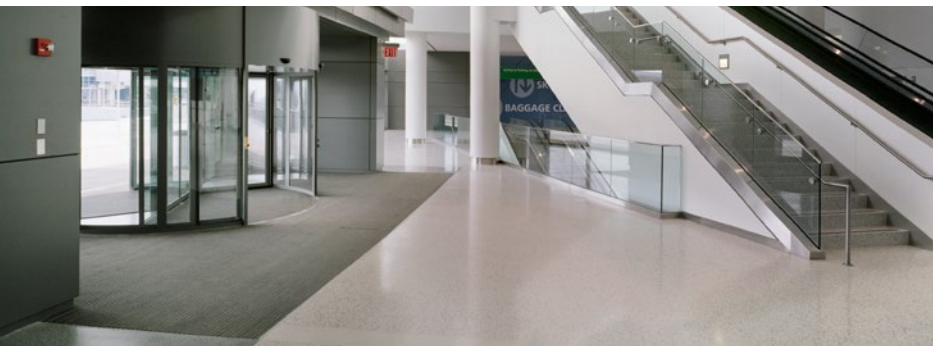
Due to increasing demands, JetBlue Airways was outgrowing its space at JFK Airport. To combat this problem and create a more functional space, they hired NYC design firm Gensler to develop plans to double its capacity. JetBlue's vision of efficiency, high quality and low cost was mirrored in Gensler's design. To withstand a consistently growing traffic volume, Gensler chose a two-zone entrance flooring system. For zone one, CS partnered with Blasi Doors to create a custom stainless steel GridLine® installation inside the revolving doors. GridLine's sleek, strong grid design effectively handles all foot traffic that passes through the large doors with its 500 pound per wheel rolling load capability and custom banded edges.

Passengers then enter the terminal by stepping onto a CS PediTred®, which is quickly becoming an airport favorite and is now a Cradle to Cradle™ Certified Silver product. PediTred features carpet inserts for drying the bottoms of shoes, roll-back capabilities for ease in maintenance, a 1,000 pound per wheel rolling load capacity and a smooth rolling surface that blends beautifully with any decor. PediTred offers all these features while still trapping dirt, debris and moisture at the door, which saves on maintenance costs throughout the life of the building and promotes improved indoor air quality.

Gensler's design brief stated that great architecture comes from operational efficiency, and the simplest solution is often the most beautiful. PediTred and GridLine echo these standards as they are efficient, sustainable and beautiful products that meet the demands of this bustling facility.

At a Glance: GridLine® and PediTred®

The JetBlue terminal at JFK Airport was revitalized with CS Entrance Flooring featuring stainless steel GridLine® within the revolving doors and PediTred® with heavy-duty carpet inserts at the rest of the entrance, selected for their ability to stand up to the terminal's increasing demands.



To view more photographs
of this project, please visit
<http://csinc.bz/jetblue>.

CS Entrance Flooring

www.c-sgroup.com
800.233.8493