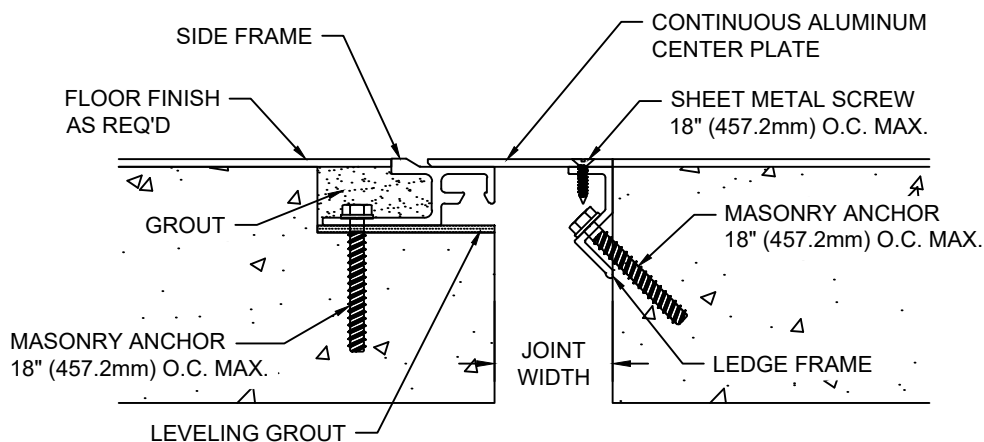


# MODEL SJPFM-100/300 INSTALLATION INSTRUCTIONS



## IMPORTANT INFORMATION

Prior to the commencement of Installation, all materials **MUST** be inspected for Damage. Any damage must be reported to CONSTRUCTION SPECIALTIES, INC., as soon as possible, so that replacement materials may be furnished without delay.

All work must be completed as per Architect's Approved "Shop Drawings", and in accordance with these Installation Instructions. When installation is complete, all materials must be protected from damage until the Architect's FINAL INSPECTION.

All materials should be arranged in the order that they are to be installed. All hardware required for each portion of the work should be placed with the appropriate materials.

Please review all Approved Shop Drawings and this Document to familiarize yourself with all the details and components of this assembly.

### IMPORTANT:

**READ THROUGH ALL INSTRUCTIONS PRIOR TO STARTING INSTALLATION**

12/13/17



**Construction Specialties™**

6696 Route 405 Highway, Muncy PA 17756  
(800) 233-8493 • Fax (570) 546-5169 • www.CSgroup.com

This document is the property of Construction Specialties, Inc. and contains CONFIDENTIAL PROPRIETARY INFORMATION that is not to be disclosed to third parties and is not to be used without approval in writing from Construction Specialties, Inc.

Notes:

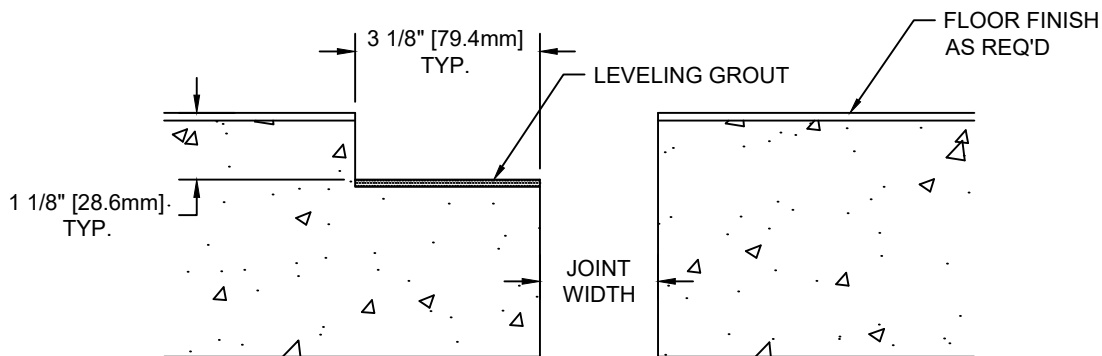
Before beginning installation, review the architectural drawings and approved Construction Specialties Inc. shop drawings to familiarize yourself with the appropriate joint cover models and locations.

Check all of the joint cover components to confirm that the correct joint cover model and size have been received. Also, check for materials that may have been damaged during shipping. Report all incorrect and/or damaged components to CS at 800-233-8493.

Read through all the steps of these instructions prior to beginning work.

# STEP 1

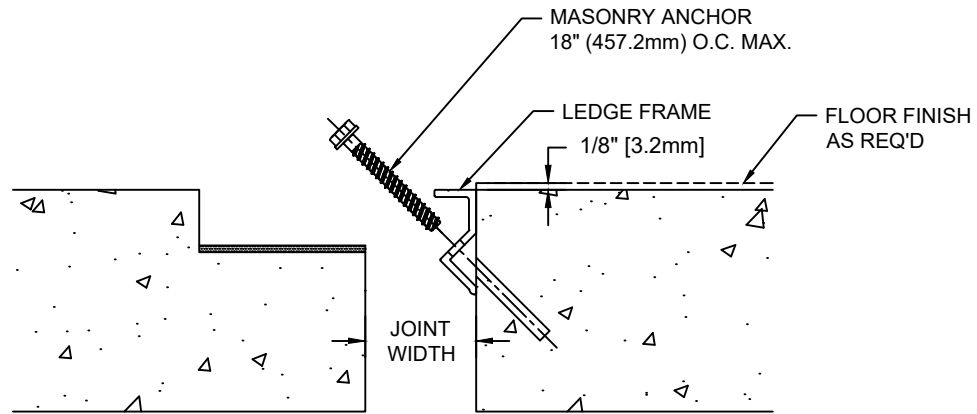
## PREPARE BLOCKOUTS



- 1.1) The blockouts must be prepared to receive the joint cover.
  - The blockout depth will typically be 1-1/8" (28.6mm).
  - Blockout depth may be adjusted as needed to accommodate a floor finish material when req'd and as indicated on the architectural drawings and/or CS shop drawings.
  - It is recommended that the blockout be formed a minimum of 1/8" deeper to allow the blockouts to be leveled for installation of the joint cover.
  - Apply a self leveling grout to the base of the blockouts to provide a continuous, solid, flat and level base for the joint cover.

# STEP 2

## LEDGE FRAME INSTALLATION



### Note:

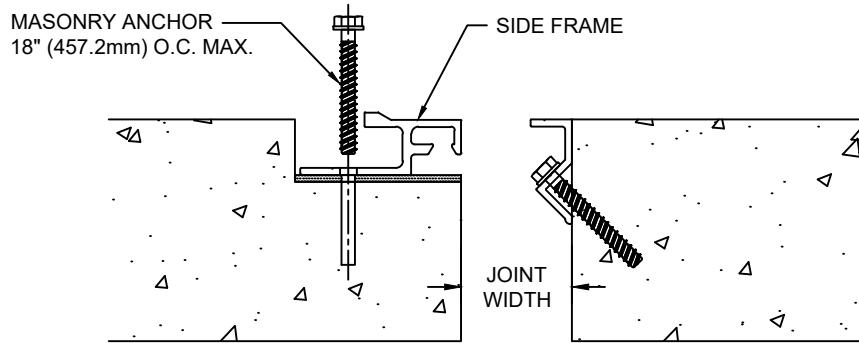
-If a CS Fire Barrier is to be installed in the joint, please review the Fire Barrier Installation Instructions supplied, and if required install the Fire Barrier **BEFORE** installation of CS Seismic Expansion Joint Aluminum Frames.

-If a Waterstop is to be installed in the joint, please review the Waterstop Installation Instructions supplied, and if required install the Waterstop **BEFORE** installation of CS Seismic Expansion Joint Aluminum Frames.

- 2.1) Begin installation of the Ledge Frame by cutting the Frame to length as needed. The Ledge Frame is to sit 1/8"[3.2mm] below the finish floor elevation.
- 2.2) Using the Ledge Frame as a template, mark the locations on the joint wall for the anchor bolts. Remove the Ledge Frame and drill the holes for the anchor bolts. The holes are to be drilled with the appropriate size and type of drill bit as indicated by the manufacturer of the anchor bolts, as supplied by CS.
- 2.3) Reposition and anchor the Ledge Frame to the joint wall with the CS supplied anchor bolts following the manufacturer's guidelines.
- 2.4) Repeat the installation procedures for any additional lengths of Ledge Frame.

# STEP 3

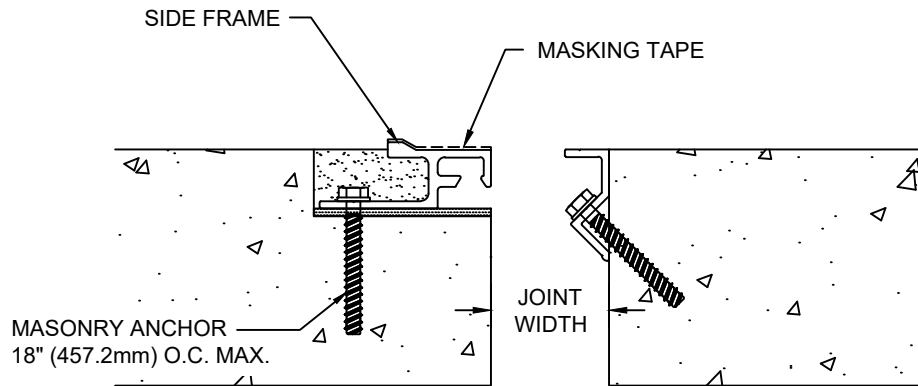
## SIDE FRAME INSTALLATION



- 3.1) Begin installation of the Side Frame by placing a length of Side Frame into the blockout. Cut the Side Frame to length as needed. The Side Frame is to sit level, flat and parallel to the edge of the joint. The Side Frame should not overhang the edge of the slab or sit above the top surface of the slab (except to accommodate floor finish).
- 3.2) Using the Side Frame as a template, mark the locations in the blockout for the anchor bolts. Remove the Side Frame and drill the holes for the anchor bolts. The holes are to be drilled with the appropriate size and type of drill bit as indicated by the manufacturer of the anchor bolts, as supplied by CS.
- 3.3) Reposition and anchor the Side Frame to the slab with the CS supplied anchor bolts following the manufacturer's guidelines.
- 3.4) Repeat the installation procedures for any additional lengths of Side Frame.

# STEP 4

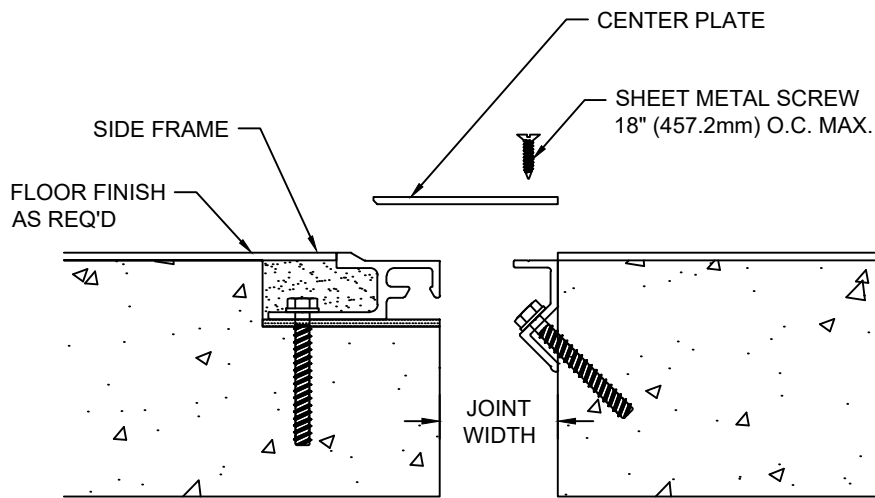
## GROUT FILL BLOCKOUTS



- 4.1) Protect Frames with masking tape.
- 4.2) Apply grout in blockout on both sides of the expansion joint using an epoxy cement grout. The grout must be poured level with the blockout.
- 4.3) Remove tape after grouting.

# STEP 5

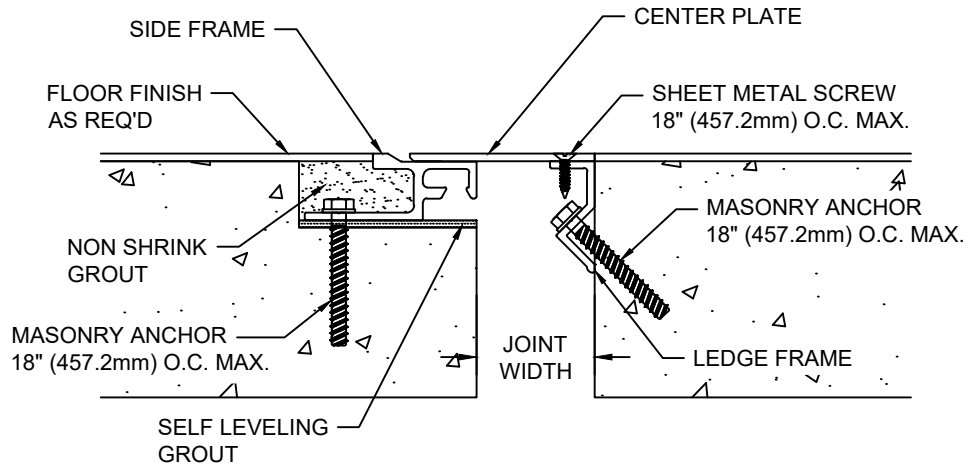
## CENTER PLATE INSTALLATION



- 5.1) Prepare Center Plate for installation by first cutting the Plate to length as needed.
- 5.2) Position the Center Plate on the Frame over the joint so the edge of the Plate aligns with the back edge of the Ledge Frame.
- 5.2) Attach the Center Plate to the Ledge Frame using the CS supplied sheet metal screws.
- 5.3) Repeat this installation procedure for any additional lengths of Center Plate.

# STEP 6

## COMPLETE INSTALLATION



- 6.1) When installation of the Joint Cover has been completed, remove all residue and foreign matter from the area and joint cover.
- 6.2) Clean the CS Joint Cover and adjoining surfaces with proper cleaner.
- 6.3) Protect the Joint Cover until the Architect's final inspection.