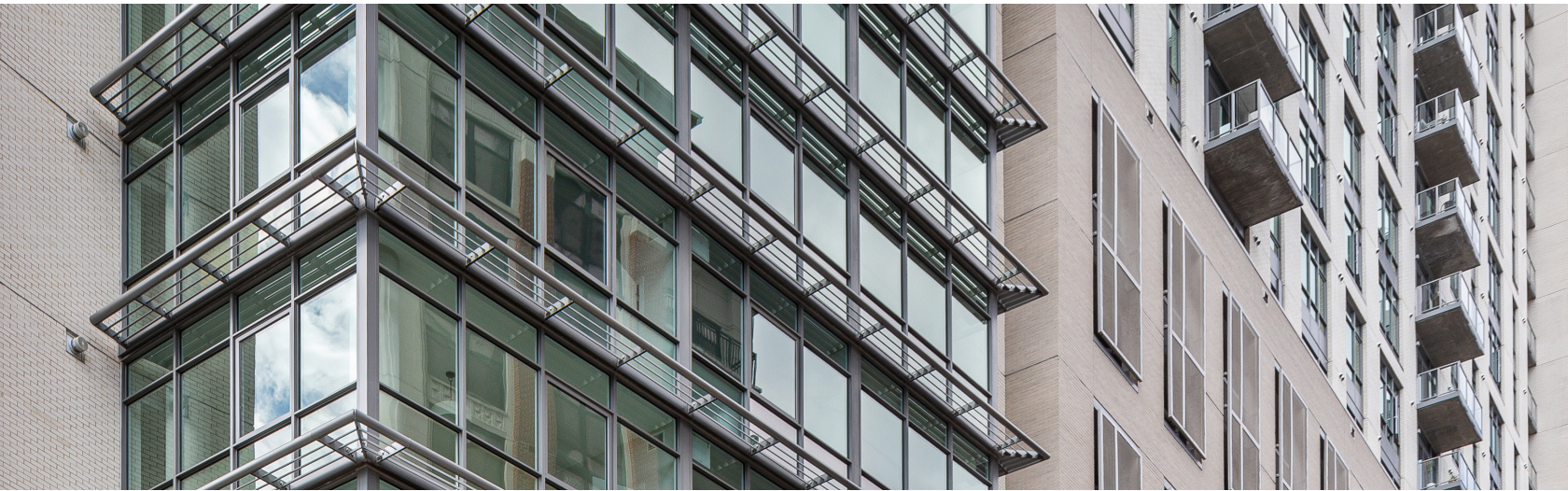
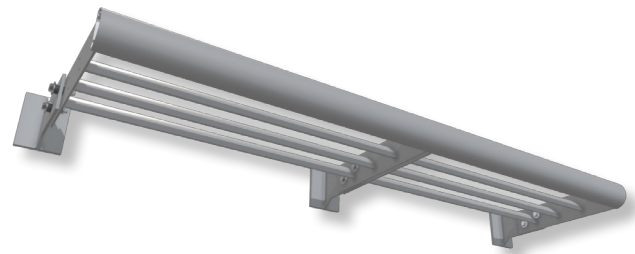


## Cantilevered, Suspended & Shadowline Sunshades



Cantilevered and Suspended sunshades are a traditional method for shading the windows and interior space below. Projecting out of the building above the windows, this style of sunshade is typically bladed with either airfoil or rectangular shaped blades. Create a stylish shadow effect with the Shadowline option which utilizes geometric grilles to diffuse the light in lieu of blades.



### Advantages

- Fixed daylight management solution
- Cantilevers off the building to cast a shadow below
- Functions as an architectural feature for the building
- Provides shading while maintaining occupants views
- Minimizes solar heat gain to reduce cooling costs and the heat island effect
- Helps reduce glare
- Diagonal suspension rod available for added support
- Unlimited blade sizes, shapes, and styles available
- Designed for wind and snow loads
- Fully engineered system is assembled for easy installation
- Optional LED Lux lighting for Cantilevered and Suspended sunshades

### Applications

- Any application where either solar (daylighting) control is required, custom architectural accents are desired, or a functioning vision barrier is needed.

# Cantilevered, Suspended & Shadowline Sunshades

## Product Details

- All hardware and mounting components included

## Finish Options



Kynar & Powder Coat



Pearlescent & Metallic



Wood Grain Patterns



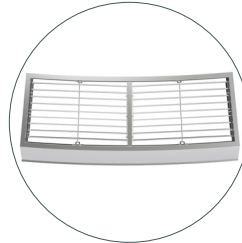
Custom Color

See all finish options online at [c-sgroup.com](https://c-sgroup.com).

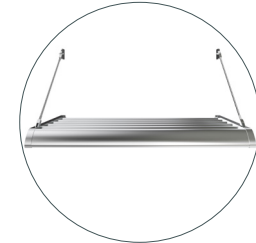
## Warranty

- 1-year Material Warranty
- 20-year Finish Warranty (excludes anodized)
- 10-year Finish Warranty Wood Grain

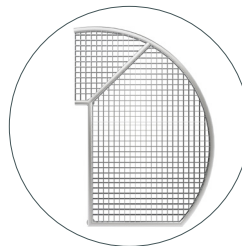
## Models



Cantilevered



Suspended



Shadowline



[Learn More](#) →