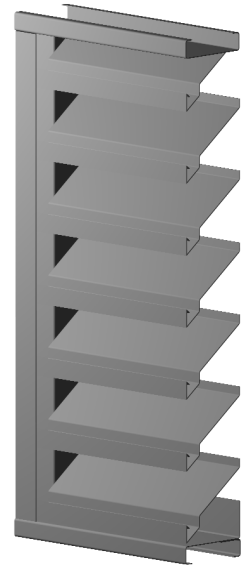


Construction Specialties Inc. certifies that Model ST-407 shown. Herein is licensed to bear the AMCA Seal. The ratings shown are based on tests and procedures performed in accordance with AMCA Publication 511 and comply with the requirements of the AMCA Certified Ratings Program. The AMCA Certified Ratings Seal applies to water penetration and air performance ratings only.



AIRFLOW DATA

For a 4 Foot by 4 Foot Unit

- Free area = 8.40 ft² (0.780 m²)
- Percent Free Area = 52.5%
- Free area velocity at the point of beginning water penetration @ (0.01oz./ft²) = 775 FPM (3.94 m/s)
- Maximum recommended air intake velocity = 575 FPM (2.92 m/s)
Air Volume @ 575 FPM free area velocity = 4830 CFM (2.28 m³/s)
Pressure Drop @ 575 FPM intake velocity = 0.05 in. H₂O (12.9 Pa)
- Maximum recommended air exhaust velocity = 1790 FPM (9.09 m/s)
Air Volume @ 1790 FPM free area velocity = 15036 CFM (7.10 m³/s)
Pressure Drop @ 1790 FPM exhaust velocity = 0.50 in. H₂O (124.2 Pa)

Data corrected to standard air density
Tested to AMCA fig. 5.5

SUGGESTED SPECIFICATIONS:

GENERAL: Furnish and install where indicated on the drawings C/S 4" (101.6 mm) DRAINABLE FIXED STAINLESS STEEL LOUVER **MODEL ST-407** as manufactured by Construction Specialties, Inc., Cranford, NJ; Mississauga, Ontario. Louvers shall be constructed entirely of stainless steel. Complete details shall be submitted to the architect for approval prior to fabrication. The supplier must be a member of AMCA or BSRIA.

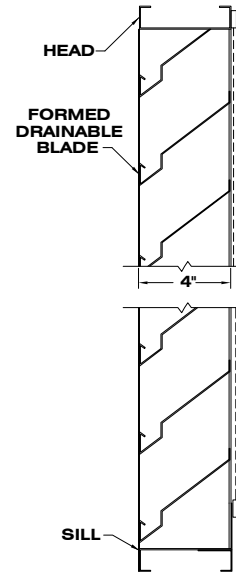
MATERIAL: Heads, sills, jambs, and mullions to be one piece structural members of stainless steel. Mullions and jambs shall have integral internal drains. Member thicknesses to be any combination of 16 gauge (1.52 mm), 18 gauge (1.21 mm) material. Blades shall be fastened to each jamb frame and vertical member with two fillet welds with a minimum 0.125" (3.18 mm) throat. Frames shall be joined at each corner with a full length filled weld. All louvers to be furnished with 5/8" (15.87 mm) flattened expanded mesh, aluminum bird screen with a .055" (1.4 mm) thick extruded aluminum frame.

STRUCTURAL DESIGN: Structural supports shall be designed and furnished by the Louver manufacturer to carry a wind load of not less than _____ psf. (kPa) (Note: if this paragraph is omitted or if the design wind load is not specified the Louvers will be manufactured in self supporting units up to a maximum of 5' wide by 8' high. Any additional structural supports required to adequately secure these units within the opening shall be the responsibility of others.

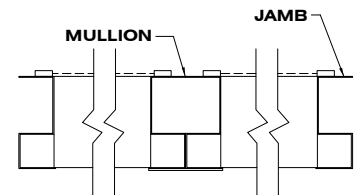
TEST DATA: The Louver Manufacturer shall submit test on a 4' x 4' unit showing that the Louver conforms to the following.

| | |
|---|--|
| Free Area: | 8.40 ft ² (0.780 m ²) |
| Free area velocity at point of beginning water penetration (0.01 oz./ft ²): | 775 FPM (3.94 m/s) |
| Intake pressure drop at 0.01 oz./ft ² free area velocity: | 0.10 in. H ₂ O (24.8 Pa) |
| Exhaust pressure drop at 1000 FPM free area velocity (5.08m/s): | 0.16 in. H ₂ O (39.7 Pa) |

FINISH: Mill finish



SECTION VIEW



PLAN VIEW

To download details and specifications visit www.c-sgroup.com. For technical and design assistance call 800-631-7379

PERFORMANCE DATA MODEL ST-407

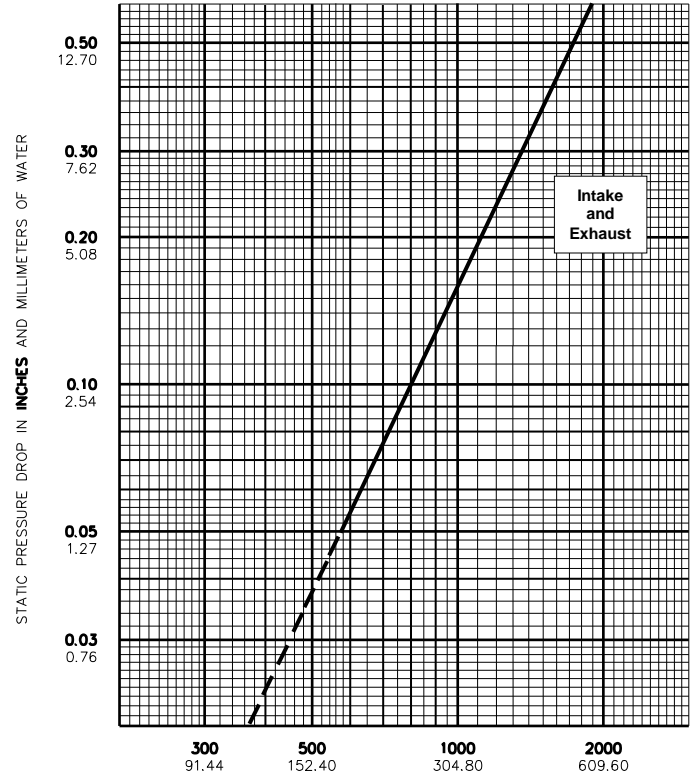
Width in Inches and Meters

| | 18 | 24 | 30 | 36 | 42 | 48 | 54 | 60 | 66 | 72 | 78 | 84 | 90 |
|------|-------|-------|-------|-------|-------|-------|-------|-------|-------|-------|-------|-------|-------|
| 0.46 | 0.61 | 0.76 | 0.91 | 1.07 | 1.22 | 1.37 | 1.52 | 1.68 | 1.83 | 1.98 | 2.13 | 2.29 | |
| 18 | 0.77 | 1.14 | 1.51 | 1.96 | 2.28 | 2.74 | 3.06 | 3.52 | 3.85 | 4.31 | 4.62 | 4.99 | 5.41 |
| 0.46 | 0.07 | 0.11 | 0.14 | 0.18 | 0.21 | 0.25 | 0.28 | 0.33 | 0.36 | 0.40 | 0.43 | 0.46 | 0.50 |
| 24 | 1.09 | 1.62 | 2.14 | 2.77 | 3.23 | 3.88 | 4.33 | 4.98 | 5.44 | 6.09 | 6.53 | 7.05 | 7.64 |
| 0.61 | 0.10 | 0.15 | 0.20 | 0.26 | 0.30 | 0.36 | 0.40 | 0.46 | 0.51 | 0.57 | 0.61 | 0.66 | 0.71 |
| 30 | 1.41 | 2.09 | 2.77 | 3.58 | 4.17 | 5.01 | 5.60 | 6.44 | 7.03 | 7.87 | 8.44 | 9.12 | 9.88 |
| 0.76 | 0.13 | 0.19 | 0.26 | 0.33 | 0.39 | 0.47 | 0.52 | 0.60 | 0.65 | 0.73 | 0.78 | 0.85 | 0.92 |
| 36 | 1.73 | 2.56 | 3.39 | 4.39 | 5.12 | 6.14 | 6.87 | 7.90 | 8.62 | 9.65 | 10.35 | 11.18 | 12.12 |
| 0.91 | 0.16 | 0.24 | 0.32 | 0.41 | 0.48 | 0.57 | 0.64 | 0.73 | 0.80 | 0.90 | 0.96 | 1.04 | 1.13 |
| 42 | 2.04 | 3.04 | 4.02 | 5.20 | 6.06 | 7.28 | 8.14 | 9.36 | 10.21 | 11.43 | 12.26 | 13.25 | 14.36 |
| 1.07 | 0.19 | 0.28 | 0.37 | 0.48 | 0.56 | 0.68 | 0.76 | 0.87 | 0.95 | 1.06 | 1.14 | 1.23 | 1.33 |
| 48 | 2.36 | 3.51 | 4.65 | 6.01 | 7.00 | 8.40 | 9.41 | 10.81 | 11.81 | 13.21 | 14.17 | 15.31 | 16.59 |
| 1.22 | 0.22 | 0.33 | 0.43 | 0.56 | 0.65 | 0.78 | 0.87 | 1.00 | 1.10 | 1.23 | 1.32 | 1.42 | 1.54 |
| 54 | 2.68 | 3.98 | 5.27 | 6.82 | 7.95 | 9.55 | 10.67 | 12.27 | 13.40 | 15.00 | 16.08 | 17.37 | 18.83 |
| 1.37 | 0.25 | 0.37 | 0.49 | 0.63 | 0.74 | 0.89 | 0.99 | 1.14 | 1.24 | 1.39 | 1.49 | 1.61 | 1.75 |
| 60 | 3.00 | 4.46 | 5.90 | 7.63 | 8.89 | 10.68 | 11.94 | 13.73 | 14.99 | 16.78 | 17.99 | 19.44 | 21.07 |
| 1.52 | 0.28 | 0.41 | 0.55 | 0.71 | 0.83 | 0.99 | 1.11 | 1.28 | 1.39 | 1.56 | 1.67 | 1.81 | 1.96 |
| 66 | 3.14 | 4.67 | 6.19 | 8.00 | 9.33 | 11.20 | 12.52 | 14.40 | 15.72 | 17.59 | 18.87 | 20.38 | 22.09 |
| 1.68 | 0.29 | 0.43 | 0.57 | 0.74 | 0.87 | 1.04 | 1.16 | 1.34 | 1.46 | 1.63 | 1.75 | 1.89 | 2.05 |
| 72 | 3.46 | 5.15 | 6.81 | 8.81 | 10.27 | 12.33 | 13.79 | 15.86 | 17.31 | 19.38 | 20.78 | 22.45 | 24.33 |
| 1.83 | 0.32 | 0.48 | 0.63 | 0.82 | 0.95 | 1.15 | 1.28 | 1.47 | 1.61 | 1.80 | 1.93 | 2.09 | 2.26 |
| 78 | 3.78 | 5.62 | 7.44 | 9.62 | 11.22 | 13.47 | 15.06 | 17.31 | 18.90 | 21.16 | 22.69 | 24.51 | 26.57 |
| 1.98 | 0.35 | 0.52 | 0.69 | 0.89 | 1.04 | 1.25 | 1.40 | 1.61 | 1.76 | 1.97 | 2.11 | 2.28 | 2.47 |
| 84 | 4.10 | 6.09 | 8.07 | 10.43 | 12.16 | 14.60 | 16.33 | 18.77 | 20.49 | 22.94 | 24.60 | 26.58 | 28.80 |
| 2.13 | 0.38 | 0.57 | 0.75 | 0.97 | 1.13 | 1.36 | 1.52 | 1.74 | 1.90 | 2.13 | 2.29 | 2.47 | 2.68 |
| 90 | 4.42 | 6.57 | 8.69 | 11.24 | 13.10 | 15.74 | 17.60 | 20.23 | 22.09 | 24.72 | 26.51 | 28.64 | 31.04 |
| 2.29 | 0.41 | 0.61 | 0.81 | 1.04 | 1.22 | 1.46 | 1.63 | 1.88 | 2.05 | 2.30 | 2.46 | 2.66 | 2.88 |
| 96 | 4.74 | 7.04 | 9.32 | 12.05 | 14.05 | 16.87 | 18.86 | 21.69 | 23.68 | 26.50 | 28.42 | 30.70 | 33.28 |
| 2.44 | 0.44 | 0.65 | 0.87 | 1.12 | 1.31 | 1.57 | 1.75 | 2.01 | 2.20 | 2.46 | 2.64 | 2.85 | 3.09 |
| 102 | 5.06 | 7.51 | 9.95 | 12.86 | 14.99 | 18.01 | 20.13 | 23.14 | 25.27 | 28.28 | 30.34 | 32.77 | 35.52 |
| 2.59 | 0.47 | 0.70 | 0.92 | 1.19 | 1.39 | 1.67 | 1.87 | 2.15 | 2.35 | 2.63 | 2.82 | 3.04 | 3.30 |
| 108 | 5.37 | 7.99 | 10.57 | 13.67 | 15.94 | 19.14 | 21.40 | 24.60 | 26.86 | 30.06 | 32.25 | 34.83 | 37.75 |
| 2.74 | 0.50 | 0.74 | 0.98 | 1.27 | 1.48 | 1.78 | 1.99 | 2.29 | 2.50 | 2.79 | 3.00 | 3.24 | 3.51 |
| 114 | 5.69 | 8.46 | 11.20 | 14.48 | 16.88 | 20.27 | 22.67 | 26.06 | 28.45 | 31.85 | 34.16 | 36.90 | 39.99 |
| 2.90 | 0.53 | 0.79 | 1.04 | 1.35 | 1.57 | 1.88 | 2.11 | 2.42 | 2.64 | 2.96 | 3.17 | 3.43 | 3.72 |
| 120 | 6.01 | 8.93 | 11.83 | 15.29 | 17.83 | 21.41 | 23.94 | 27.52 | 30.05 | 33.63 | 36.07 | 38.96 | 42.23 |
| 3.05 | 0.56 | 0.83 | 1.10 | 1.42 | 1.66 | 1.99 | 2.22 | 2.56 | 2.79 | 3.12 | 3.35 | 3.62 | 3.92 |
| 126 | 6.16 | 9.15 | 12.11 | 15.66 | 18.26 | 21.93 | 24.52 | 28.19 | 30.78 | 34.44 | 36.94 | 39.91 | 43.25 |
| 3.20 | 0.57 | 0.85 | 1.13 | 1.45 | 1.70 | 2.04 | 2.28 | 2.62 | 2.86 | 3.20 | 3.43 | 3.71 | 4.02 |
| 132 | 6.48 | 9.62 | 12.74 | 16.47 | 19.20 | 23.06 | 25.79 | 29.64 | 32.37 | 36.23 | 38.85 | 41.97 | 45.49 |
| 3.35 | 0.60 | 0.89 | 1.18 | 1.53 | 1.78 | 2.14 | 2.40 | 2.75 | 3.01 | 3.37 | 3.61 | 3.90 | 4.23 |
| 138 | 6.79 | 10.10 | 13.37 | 17.28 | 20.15 | 24.20 | 27.05 | 31.10 | 33.96 | 38.01 | 40.77 | 44.04 | 47.73 |
| 3.51 | 0.63 | 0.94 | 1.24 | 1.61 | 1.87 | 2.25 | 2.51 | 2.89 | 3.15 | 3.53 | 3.79 | 4.09 | 4.43 |
| 144 | 7.11 | 10.57 | 13.99 | 18.09 | 21.09 | 25.33 | 28.32 | 32.56 | 35.55 | 39.79 | 42.68 | 46.10 | 49.97 |
| 3.66 | 0.66 | 0.98 | 1.30 | 1.68 | 1.96 | 2.35 | 2.63 | 3.02 | 3.30 | 3.70 | 3.96 | 4.28 | 4.64 |
| 150 | 7.43 | 11.04 | 14.62 | 18.90 | 22.04 | 26.47 | 29.59 | 34.02 | 37.14 | 41.57 | 44.59 | 48.16 | 52.20 |
| 3.81 | 0.69 | 1.03 | 1.36 | 1.76 | 2.05 | 2.46 | 2.75 | 3.16 | 3.45 | 3.86 | 4.14 | 4.47 | 4.85 |
| 156 | 7.75 | 11.52 | 15.25 | 19.71 | 22.98 | 27.60 | 30.86 | 35.48 | 38.73 | 43.35 | 46.50 | 50.23 | 54.44 |
| 3.96 | 0.72 | 1.07 | 1.42 | 1.83 | 2.14 | 2.56 | 2.87 | 3.30 | 3.60 | 4.03 | 4.32 | 4.67 | 5.06 |
| 162 | 8.07 | 11.99 | 15.87 | 20.52 | 23.93 | 28.73 | 32.13 | 36.93 | 40.33 | 45.13 | 48.41 | 52.29 | 56.68 |
| 4.11 | 0.75 | 1.11 | 1.47 | 1.91 | 2.22 | 2.67 | 2.98 | 3.43 | 3.75 | 4.19 | 4.50 | 4.86 | 5.27 |
| 168 | 8.39 | 12.46 | 16.50 | 21.33 | 24.87 | 29.87 | 33.39 | 38.39 | 41.92 | 46.92 | 50.32 | 54.36 | 58.91 |
| 4.27 | 0.78 | 1.16 | 1.53 | 1.98 | 2.31 | 2.77 | 3.10 | 3.57 | 3.89 | 4.36 | 4.67 | 5.05 | 5.47 |
| 174 | 8.71 | 12.94 | 17.13 | 22.14 | 25.81 | 31.00 | 34.66 | 39.85 | 43.51 | 48.70 | 52.23 | 56.42 | 61.15 |
| 4.42 | 0.81 | 1.20 | 1.59 | 2.06 | 2.40 | 2.88 | 3.22 | 3.70 | 4.04 | 4.52 | 4.85 | 5.24 | 5.68 |
| 180 | 9.02 | 13.41 | 17.75 | 22.95 | 26.76 | 32.14 | 35.93 | 41.31 | 45.10 | 50.48 | 54.14 | 58.48 | 63.39 |
| 4.57 | 0.84 | 1.25 | 1.65 | 2.13 | 2.49 | 2.99 | 3.34 | 3.84 | 4.19 | 4.69 | 5.03 | 5.43 | 5.89 |
| 186 | 9.17 | 13.63 | 18.04 | 23.32 | 27.19 | 32.66 | 36.51 | 41.98 | 45.83 | 51.30 | 55.02 | 59.43 | 64.41 |
| 4.72 | 0.85 | 1.27 | 1.68 | 2.17 | 2.53 | 3.03 | 3.39 | 3.90 | 4.26 | 4.77 | 5.11 | 5.52 | 5.98 |
| 192 | 9.49 | 14.10 | 18.67 | 24.13 | 28.14 | 33.79 | 37.78 | 43.43 | 47.42 | 53.08 | 56.93 | 61.49 | 66.65 |
| 4.88 | 0.88 | 1.31 | 1.73 | 2.24 | 2.61 | 3.14 | 3.51 | 4.04 | 4.41 | 4.93 | 5.29 | 5.71 | 6.19 |
| 198 | 9.81 | 14.57 | 19.29 | 24.94 | 29.08 | 34.93 | 39.05 | 44.89 | 49.01 | 54.86 | 58.84 | 63.56 | 68.89 |
| 5.03 | 0.91 | 1.35 | 1.79 | 2.32 | 2.70 | 3.24 | 3.63 | 4.17 | 4.55 | 5.10 | 5.47 | 5.90 | 6.40 |
| 204 | 10.12 | 15.05 | 19.92 | 25.75 | 30.03 | 36.06 | 40.32 | 46.35 | 50.61 | 56.64 | 60.57 | 65.62 | 71.13 |
| 5.18 | 0.94 | 1.40 | 1.85 | 2.39 | 2.79 | 3.35 | 3.75 | 4.31 | 4.70 | 5.26 | 5.64 | 6.10 | 6.61 |
| 210 | 10.44 | 15.52 | 20.55 | 26.56 | 30.97 | 37.19 | 41.58 | 47.81 | 52.20 | 58.42 | 62.66 | 67.69 | 73.36 |
| 5.33 | 0.97 | 1.44 | 1.91 | 2.47 | 2.88 | 3.46 | 3.86 | 4.44 | 4.85 | 5.43 | 5.82 | 6.29 | 6.82 |
| 216 | 10.76 | 15.99 | 21.17 | 27.37 | 31.91 | 38.33 | 42.85 | 49.27 | 53.79 | 60.20 | 64.57 | 69.75 | 75.60 |
| 5.49 | 1.00 | 1.49 | 1.97 | 2.54 | 2.96 | 3.56 | 3.98 | 4.58 | 5.00 | 5.59 | 6.00 | 6.48 | 7.02 |
| 222 | 11.08 | 16.47 | 21.80 | 28.18 | 32.86 | 39.46 | 44.12 | 50.72 | 55.38 | 61.99 | 66.48 | 71.82 | 77.84 |
| 5.64 | 1.03 | 1.53 | 2.03 | 2.62 | 3.05 | 3.67 | 4.10 | 4.71 | 5.15 | 5.76 | 6.18 | 6.67 | 7.23 |

Height in Inches and Meters

Water Penetration Statement

AMCA defines the point of beginning water penetration as the free area velocity at which the AMCA water test has yielded 0.01 or less ounces of water per square foot of louver free area during a 15-minute test period.



AIR VELOCITY IN FEET AND METERS PER MINUTE THROUGH FREE AREA

For a 48" x 48" sized louver

Construction Specialties, Inc.
Manufacturing & Sales Location
www.c-sgroup.com

Cranford, New Jersey
 49 Meeker Avenue 07016
 Telephone: (800) 631-7379
 Fax: (908) 272-2920

Mississauga, Ontario
 895 Lakefront Promenade L5E 2C2
 Telephone: (888) 895-8955
 Fax: (905) 274-6241

A member of the C/S Group of Companies
 For assistance with overseas requirements,
 call C/S International (908) 236-0800

Upper Numerals English Units/Lower Numerals Metric Units

©Copyright April 2015. Construction Specialties, Inc., reserves the right to make design changes or to withdraw any design without notice.