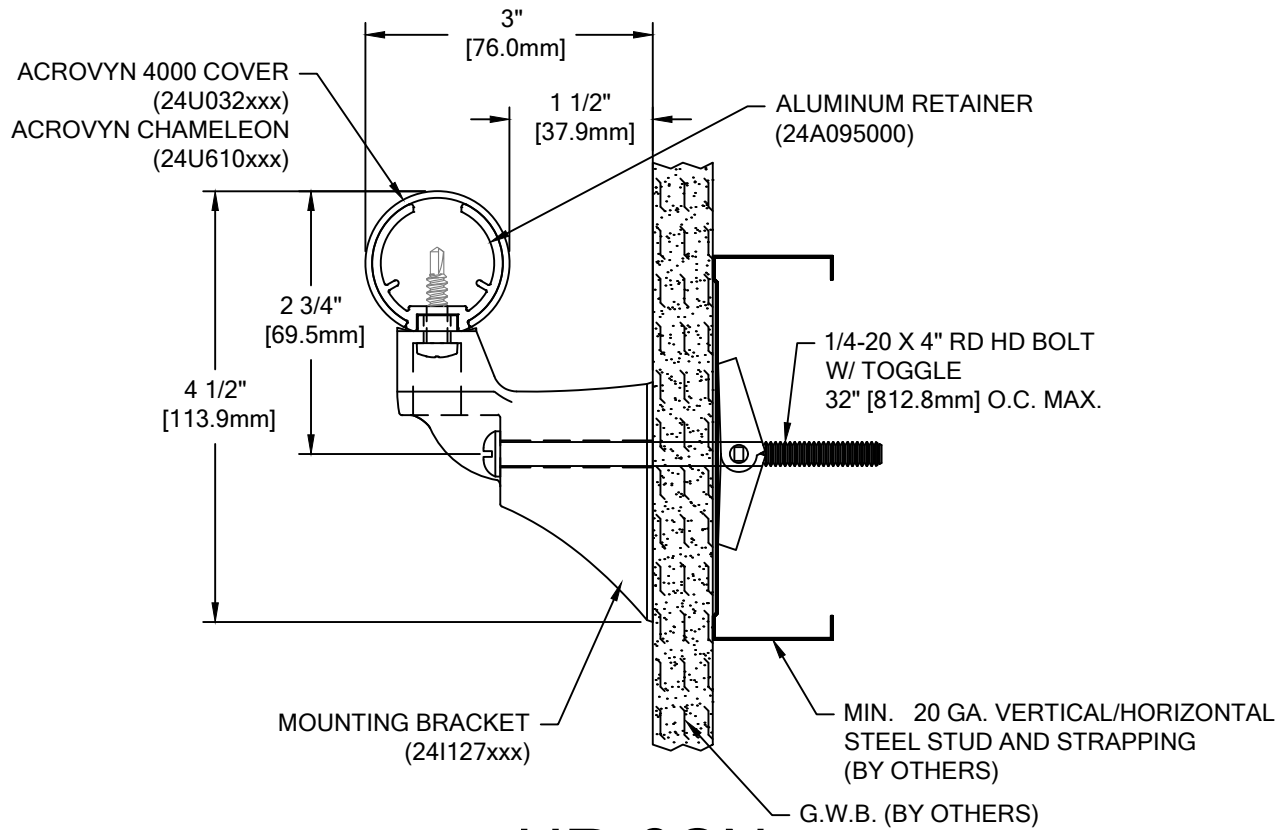



**COLOR:**  
**HANDRAIL:** \_\_\_\_\_  
**BRACKETS:** \_\_\_\_\_  
**\*END CAPS:** \_\_\_\_\_  
 COLOR TO BE SELECTED FROM ONE OF C/S STANDARD COLORS.  
 \*OPTIONAL STAINLESS STEEL END CAPS AND INSIDE/OUTSIDE CORNERS ALSO AVAILABLE.  
 \*STAINLESS STEEL END CAPS AND INSIDE/OUTSIDE CORNERS ARE AVAILABLE WITH AN OPTIONAL POWDER COAT FINISH. PLEASE ADVISE POWDER COAT FINISH IF REQUIRED.

TOTAL L/F REQ'D	LEFT END CAPS	RIGHT END CAPS	I.S.C./ O.S.C. REQ'D



## HR-6CN ACROVYN 4000

WALL CONDITION	SPECIFIED FASTENER	DRILL DIAMETERS		C/S PART NUMBER
		WALL	RETAINER	
STEEL STUD/GYPSUM WALL	1/4-20 X 4\"/>			
CONCRETE/CONC. BLOCK	#14 X 4\"/>			
WOOD STUD/GYPSUM WALL	#14 X 4\"/>			
20 GA. STEEL STUD/GYPSUM WALL (OSHPD)	1/4-20 X 5\"/>			
16 GA. MIN. STEEL STUD AND 16 GA. MIN. STEEL STRAPPING / GYPSUM WALL CONSTRUCTION REQUIRED (TEK SCREWS)	#14 X 5\"/>			

 Hughesville, PA   800.233.8493   570.546.5941 Mississauga, ON   888.895.8955   905.274.3611 <a href="http://www.c-sgroup.com">www.c-sgroup.com</a> © Copyright 2018 Construction Specialties, Inc.	<b>PROJECT:</b>	<b>REVISION:</b>
	<b>JOB NO.:</b>	<b>F&amp;F:</b>
	<b>CUSTOMER:</b>	
	<b>REP:</b>	<b>DATE:</b>
	<b>DRAWN BY:</b>	<b>SHEET NO:</b>