

# SJHD & SJWHD

## TECHNICAL DATA:

### Aluminum

- Extrusion – CS uses multiple alloys & tempers which are established to be the most appropriate for the given use of individual parts. Will be one of the following: (6063-T5, T6, T52) (6061-T5, T6, T51) (6105-T5, T6) (6005-T5) (6005A-T5, T61), ASTM B221
- Sheet – 6061-T6, 3003-H14, 5005-H34, ASTM B209

### Stainless Steel

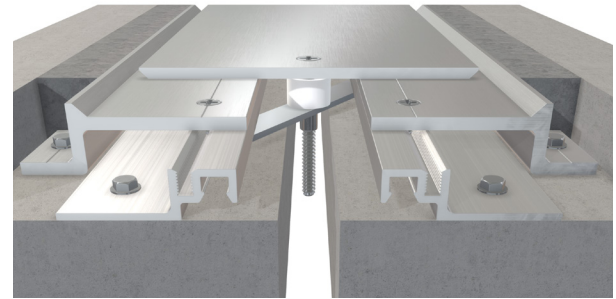
- Type 304 ASTM A167, A240A, A240M

### Turnbar

- Material – C1075 Blue Temper Spring Steel
- Hardness - RC 44-47
- Finish - "A" Coating (Corrosion Protection)

### Standard Loading

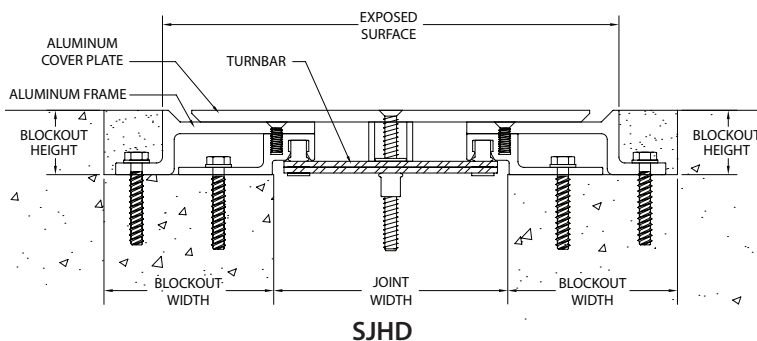
- 2,000 lbs.



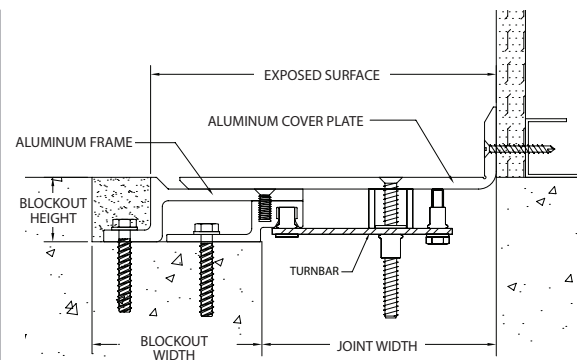
Capable of Lateral Movement

MODEL	JOINT WIDTH	MINIMUM OPENING	MAXIMUM OPENING	EXPOSED SURFACE	BLOCKOUT WIDTH	BLOCKOUT HEIGHT
SJ-100HD	1.00" (25mm)	0.38" (10mm)	3.36" (85mm)	8.75" (222mm)	5.13" (130mm)	1.38" (35mm)
SJ-200HD	2.00" (51mm)	0.75" (19mm)	4.36" (111mm)	8.75" (222mm)	4.63" (118mm)	1.38" (35mm)
SJ-300HD	3.00" (76mm)	1.75" (44mm)	5.36" (136mm)	8.75" (222mm)	4.13" (105mm)	1.38" (35mm)
SJ-400HD	4.00" (102mm)	2.75" (70mm)	6.36" (162mm)	8.75" (222mm)	3.63" (92mm)	1.38" (35mm)
SJ-500HD	5.00" (127mm)	2.75" (70mm)	9.25" (235mm)	9.75" (248mm)	3.63" (92mm)	1.38" (35mm)
SJ-600HD	6.00" (152mm)	2.75" (70mm)	9.25" (235mm)	11.75" (298mm)	4.13" (105mm)	1.38" (35mm)
SJ-700HD	7.00" (178mm)	2.75" (70mm)	9.25" (235mm)	13.75" (349mm)	4.63" (118mm)	1.38" (35mm)
SJ-800HD	8.00" (203mm)	2.75" (70mm)	13.50" (343mm)	14.75" (375mm)	4.63" (118mm)	1.38" (35mm)
SJW-100HD	1.00" (25mm)	0.00" (0mm)	3.32" (84mm)	5.63" (143mm)	5.13" (130mm)	1.38" (35mm)
SJW-200HD	2.00" (51mm)	0.00" (0mm)	4.32" (110mm)	4.63" (118mm)	4.63" (118mm)	1.38" (35mm)
SJW-300HD	3.00" (76mm)	0.50" (13mm)	5.32" (135mm)	4.13" (105mm)	4.13" (105mm)	1.38" (35mm)
SJW-400HD	4.00" (102mm)	1.00" (25mm)	6.32" (161mm)	6.38" (162mm)	3.63" (92mm)	1.38" (35mm)
SJW-500HD	5.00" (127mm)	1.00" (25mm)	7.32" (186mm)	7.38" (187mm)	3.63" (92mm)	1.38" (35mm)
SJW-600HD	6.00" (152mm)	1.00" (25mm)	8.82" (224mm)	8.88" (226mm)	4.13" (105mm)	1.38" (35mm)
SJW-700HD	7.00" (178mm)	4.88" (124mm)	10.19" (259mm)	10.38" (264mm)	4.63" (118mm)	1.38" (35mm)
SJW-800HD	8.00" (203mm)	5.38" (137mm)	11.04" (280mm)	11.38" (289mm)	4.63" (118mm)	1.38" (35mm)

Use chart above for Stainless Steel models.



SJHD



SJWHD