

SSRH 200-400

TECHNICAL DATA:

Aluminum

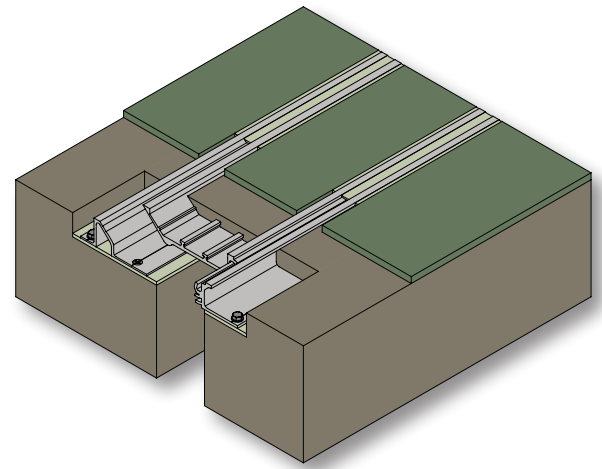
- Extrusion – CS uses multiple alloys & tempers which are established to be the most appropriate for the given use of individual parts. Will be one of the following: (6063-T5, T6, T52) (6061-T5, T6, T51) (6105-T5, T6) (6005-T5) (6005A-T5, T61), ASTM B221

Standard Loading

- 500 lbs.

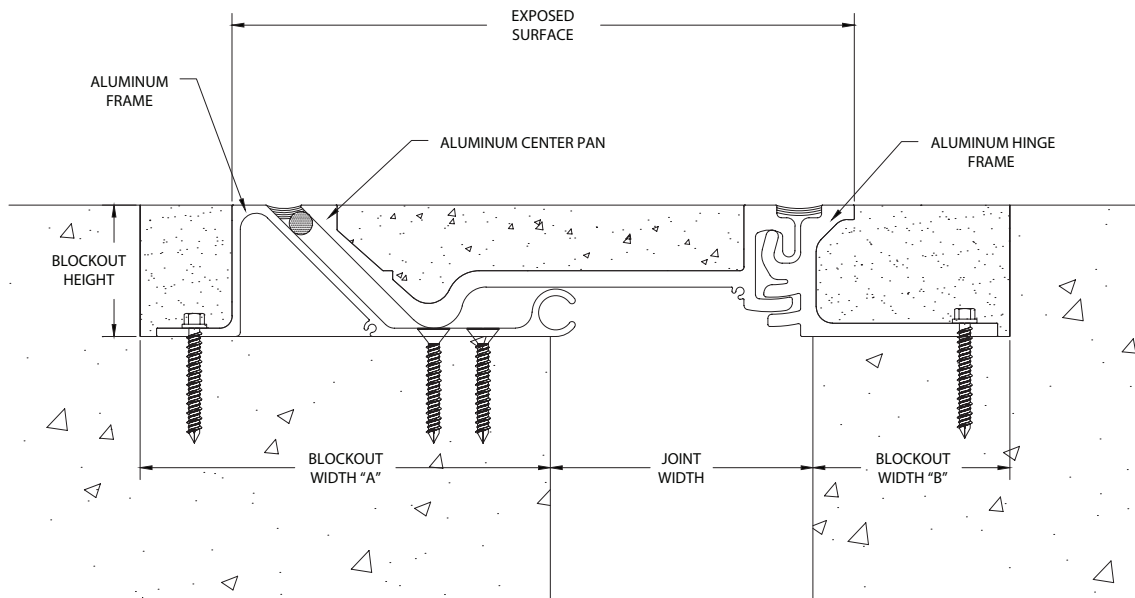
Center Pan

- 1" depth



Capable of Lateral Movement

MODEL	JOINT WIDTH	MINIMUM OPENING	MAXIMUM OPENING	EXPOSED SURFACE	BLOCKOUT WIDTH "A"	BLOCKOUT HEIGHT	BLOCKOUT WIDTH "B"
SSRH-200	2.00" (51mm)	0.75" (19mm)	4.00" (102mm)	8.50" (216mm)	7.25" (184mm)	2.00" (51mm)	3.00" (76mm)
SSRH-300	3.00" (76mm)	1.25" (32mm)	5.00" (127mm)	9.00" (229mm)	6.75" (171mm)	2.00" (51mm)	3.00" (76mm)
SSRH-400	4.00" (102mm)	1.75" (44mm)	6.00" (152mm)	9.50" (241mm)	6.25" (159mm)	2.00" (51mm)	3.00" (76mm)



SSRH