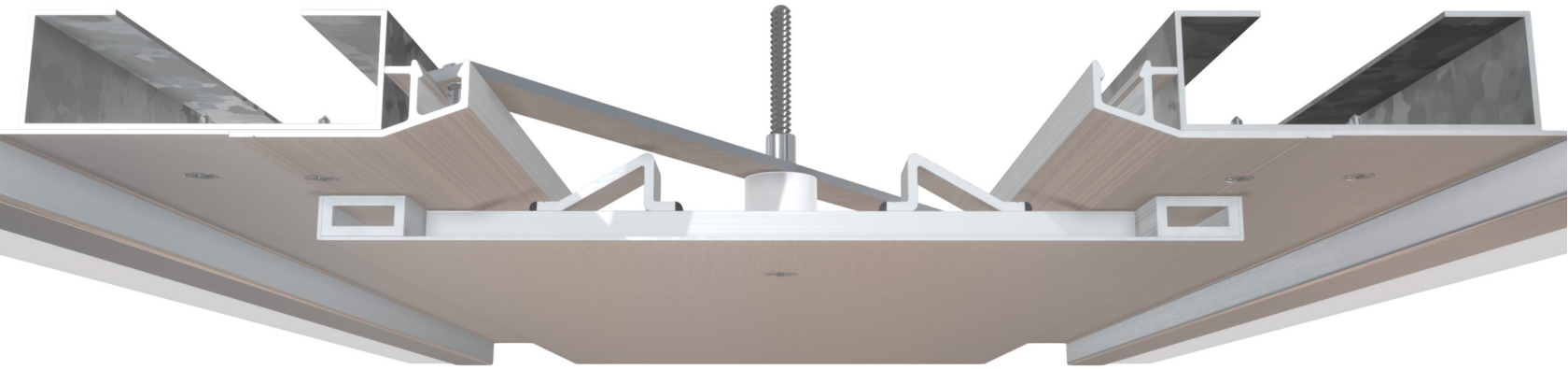


SGC Series



Model SGC

This flush, self-centering metal ceiling cover is ideal for interior applications with larger movement requirements and is designed to match select flush wall covers. The durable aluminum plate spans the joint opening and can be painted to match nearly any finish.

Advantages

- Flush profile
- Accommodates larger movement requirements
- Corresponding wall covers for a seamless sight line
- Paint to match surrounding finishes
- Strong ladder frame center section for durability



[View 3D Model](#) →

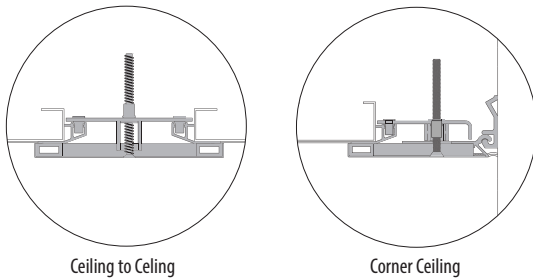
SGC Series

Product Details

- Joint sizes range from 5" to 16" (127mm to 406.4mm)
- 10' (304.8cm) stock lengths
- Self-centering center plate with turn bar
- Meets ASTM E1399



Model Details



MODEL	CEILING TO CEILING	CORNER CEILING
SGC	•	
SGCC		•

Standard Finish



Premium finishes are available in Kynar® and Powder Coat options. See all finish options online at c-sgroup.com.

Aluminum in contact with concrete/masonry will have a 2 mil, heavy metal free, high solids primer

Warranty

- Standard Five-Year Warranty



Learn More →