

Pedimat®

Installation Instructions

Pedimat® M1 with Pipestem Frame

General Information

Open the pack list on the crate's exterior. Locate the shop drawings and installation instruction inside the box. Review contents and make sure all parts are present. For a rectangular installation, the pack list will include the number of modules and frame pieces. For odd-shaped installations, a drawing will be supplied identifying the module layout in numbered sequence.

If you discover that material is missing or defective, contact our customer service department immediately: **800.233.8493**

Important Notes – Do Not Overlook

Prior to installation, ensure that the material is stored indoors and has acclimated to the environment's temperature for 24 hours.

Assess the site condition prior to installation ensuring the recess is:

- Free of debris and moisture
- Smooth and flat

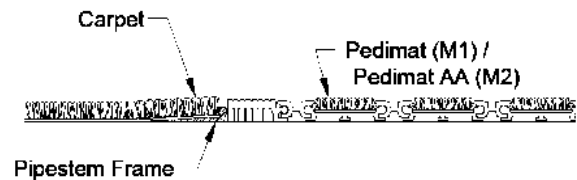
High spots should be ground down. Low spots should be filled with a self-leveling grout. If these conditions have been met, you can begin the installation.

Tools Required

You will need a tape measure, utility knife, shop vacuum and PPE (gloves, glasses, ear protection, etc.).

If your system is shipped flat you will need a $\frac{3}{32}$ " hex tool and our supplemental instructions.

Installation Instructions



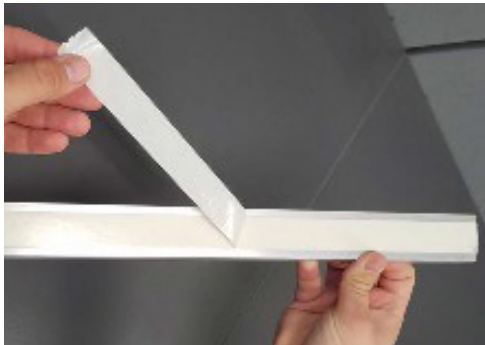
1. Start by dry fitting all frame pieces within the area and use a tape measure to ensure a proper fit. For odd-shaped layouts, match frame tags to the drawing on the pack list.

2. The leg of the frame should face away from the Pedimat and go underneath the surrounding carpet.

Pedimat® Installation Instructions (continued)

Pedimat® M1 with Pipestem Frame

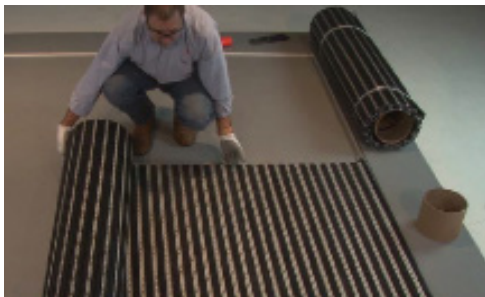
Installation Instructions (continued)



3. Remove the covering on the tape and reinstall the frame in its correct position and location. Apply pressure on the frame to properly bind the tape to the flooring.



4. For layout sequence of the mat units with multiple sections, refer to the shop drawings and the mark numbers placed on the backside of the mats.



5. Unroll the mats and place into the recess per the drawing layout.



6. Adjust and align the mat into the recess.



7. Cut the oversized end trim flush to the edge of the rail.



8. For proper overall fit, adjust the end trim using a utility knife with a new, sharp blade. Remove excess trim equally at both ends. The end trim has grooves every 1/8" that you can use to run the blade across.

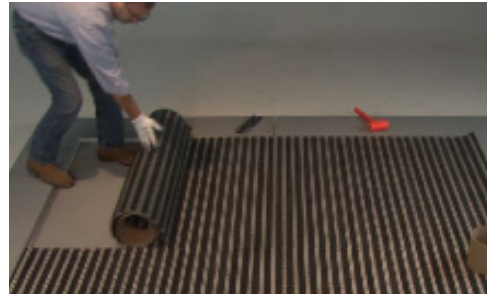
Pedimat® *Installation Instructions (continued)*

Pedimat® M1 with Pipestem Frame

Installation Instructions (continued)



9. For beginners: we recommend using a straight edge to assist in cutting an accurate line. Once the end trim is adjusted, tuck the mat into the recess and push flat.



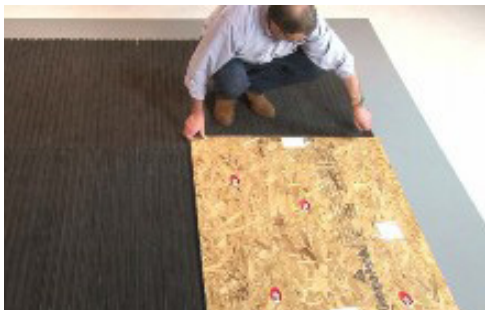
10. Repeat steps 5-9 for adjacent sections.



11. Scuff or drag your heel to align the mat. It may be necessary to lift and flap/shake the mat for final alignment.



12. Clean the unit with a vacuum.



13. If construction is to continue in the building, protect the unit with plywood sheathing.



14. Care & Maintenance: to properly clean underneath the mat and avoid rail damage, roll back the mat edge to the 12th rail. Continue to roll back the mat holding that diameter.