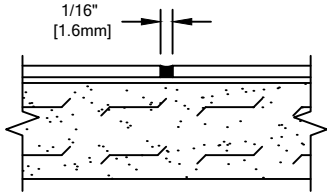


COLOR: \_\_\_\_\_  
 COLOR TO BE SELECTED FROM ONE OF CS STANDARD COLORS.

MATERIAL	QTY. REQ'D
48" X 96"	
48" X 120"	

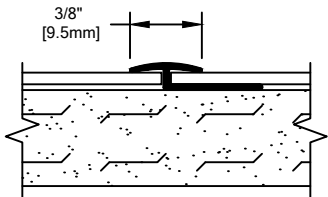
**NOTES:**

- STANDARD SHEET SIZES ARE 48" X 96" OR 48" X 120".
- WALL COVERING IS SUPPLIED WITH STANDARD SUEDE TEXTURE.
- ACROVYN TRIMS SUPPLIED IN 10'-0" LENGTHS.



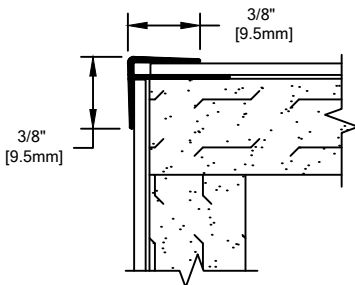
**COLOR MATCHED CAULK**  
(21C002xxx)

COLOR: \_\_\_\_\_  
 QTY.: \_\_\_\_\_



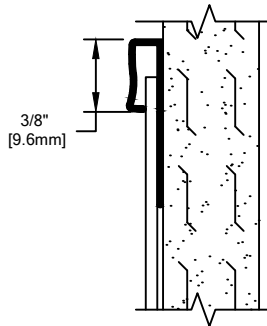
**VERTICAL JOINT TRIM**  
(25N038xxxS)

COLOR: \_\_\_\_\_  
 QTY.: \_\_\_\_\_



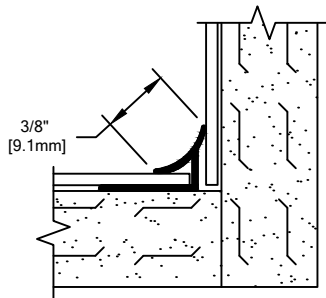
**OUTSIDE CORNER TRIM**  
(25N037xxxS)

COLOR: \_\_\_\_\_  
 QTY.: \_\_\_\_\_



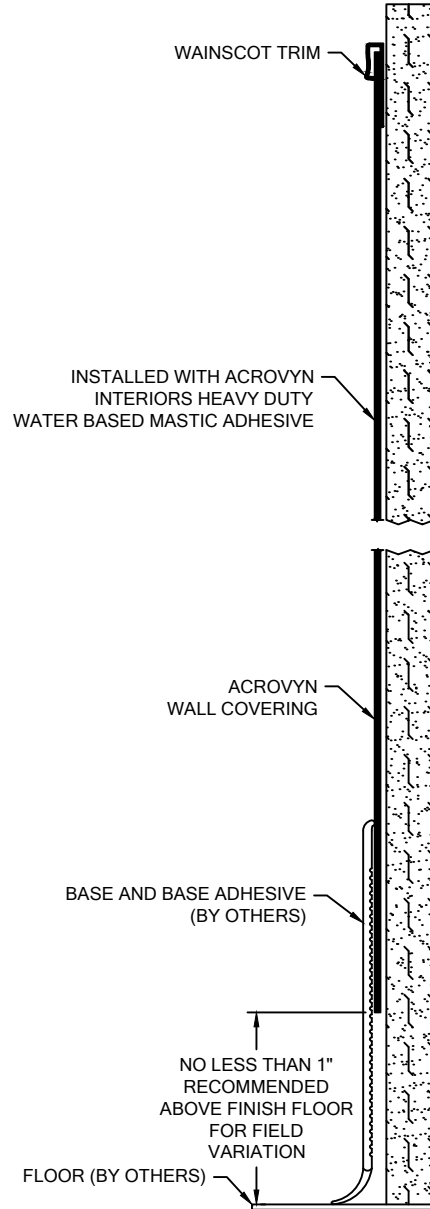
**WAINSCOT TRIM**  
(25N040xxxS)

COLOR: \_\_\_\_\_  
 QTY.: \_\_\_\_\_




**INSIDE CORNER TRIM**  
(25N039xxxS)

COLOR: \_\_\_\_\_  
 QTY.: \_\_\_\_\_



**.075" ACROVYN WALL COVERING  
 AT PARTIAL HEIGHT  
 WITH ACROVYN TRIMS**

 Hughesville, PA   800.233.8493   570.546.5941 Mississauga, ON   888.895.8955   905.274.3611 <a href="http://www.c-sgroup.com">www.c-sgroup.com</a> © Copyright 2016 Construction Specialties, Inc.	<b>PROJECT:</b>	<b>REVISION:</b>
	<b>JOB NO.:</b>	<b>F&amp;F:</b>
	<b>CUSTOMER:</b>	
	<b>REP:</b>	<b>DATE:</b>
	<b>DRAWN BY:</b>	<b>SHEET NO:</b>