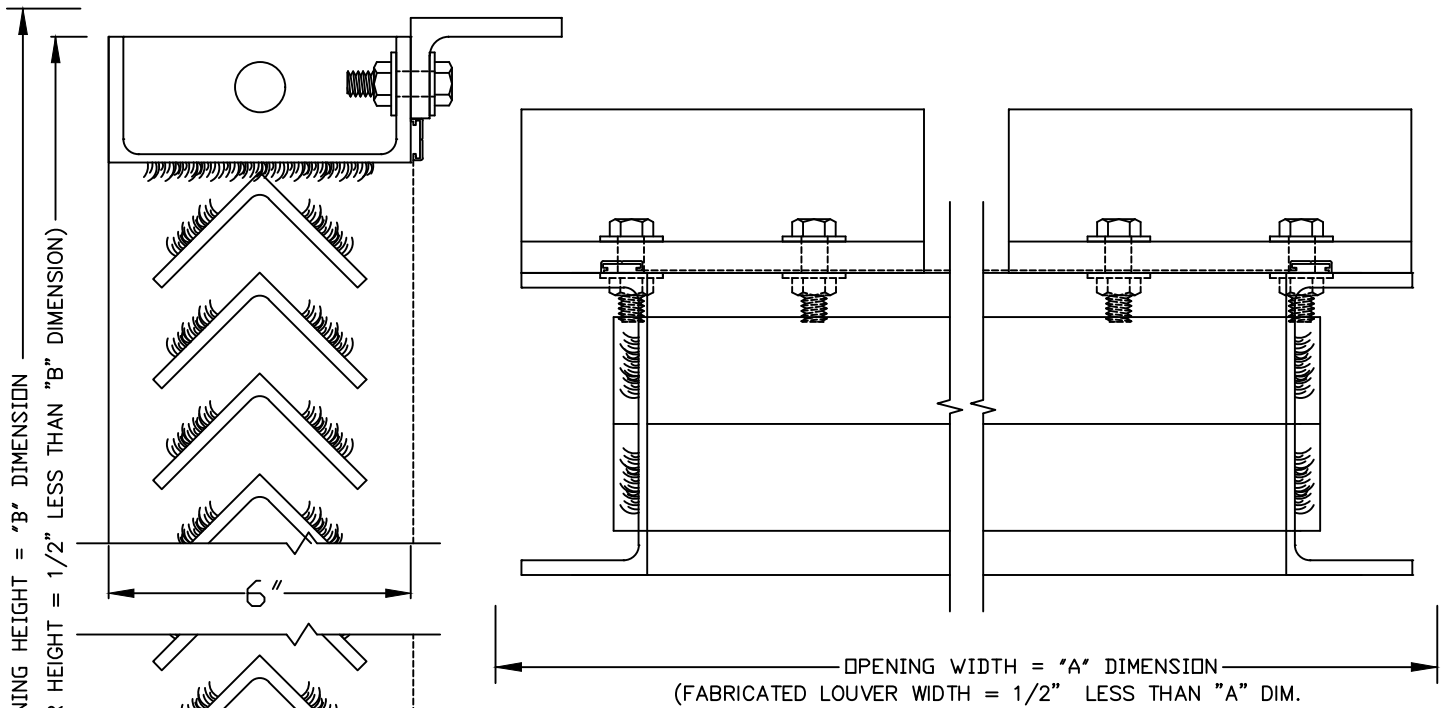


FEMA EXTREME WEATHER LOUVER — MODEL EW-5210

LOUVER FURNISHED WITH 3"x2"x 3/8" ALUM.
CLIP ANGLES AT HEAD AND SILL ONLY
PERIMETER MOUNTING HARDWARE NOT BY CS.



PLAN VIEW

SIZES UP TO 4' X 4' TESTED TO 300 PSF
SIZES OVER 4' X 4' AND UP TO 6'-6" X 7'-6"
TESTED TO 250 PSF
MAXIMUM SIZE IS 6'-6" X 7'-6"

SCREENS

- SCREEN NOT REQUIRED
- SCREEN REQUIRED
- INTERIOR MOUNTED
- EXTERIOR MOUNTED
- BIRDSCREEN (1/2" MESH)
- INSECT SCREEN (18x16 MESH)

FINISHES

- STANDARD MILL
- FLUOROPOLYMER POWDER COAT
 - (1) OF CS STD. COLORS
 - CUSTOM COLOR, CS REQUIRES A COLOR CHIP FOR MATCHING
- ARCHITECTURAL CLASS I (DK. OR MED.) BRONZE ANODIC COATING
- 204-R1 CLEAR ANODIZE
- OTHER _____

SECTION VIEW

SILL PAN

- * SETBACK DIM = 0"-3"
- * SETBACK DIM = 3"-6"

CS FEMA EXTREME WEATHER LOUVER MODEL EW-5210
FRAMES AND BLADES TO BE FABRICATED FROM 6061-T6 ALLOY
ALL FASTENERS TO BE STAINLESS STEEL.
UNSUPPORTED BLADE LENGTH= @ PSF.

MARK	QTY.	"A" DIM.	"B" DIM.	LOCATION	REMARKS

Construction Specialties, Inc.
3 Werner Way
Lebanon, New Jersey 08833
(800) 233-8493

PROJECT:	CKD. BY:
CUSTOMER:	DRAWN BY:
ARCH'T:	DATE:
AGENT:	DWG. NO:
	SHEET OF