

MARC & MARR

TECHNICAL DATA:

Aluminum

- Extrusion – CS uses multiple alloys & tempers which are established to be the most appropriate for the given use of individual parts.
Will be one of the following: (6063-T5, T6, T52) (6061-T5, T6, T51) (6105-T5, T6) (6005-T5) (6005A-T5, T61), ASTM B221
- Sheet – 6061-T6, 3003-H14, 5005-H34, ASTM B209

Lateral Slide / Slider Assembly

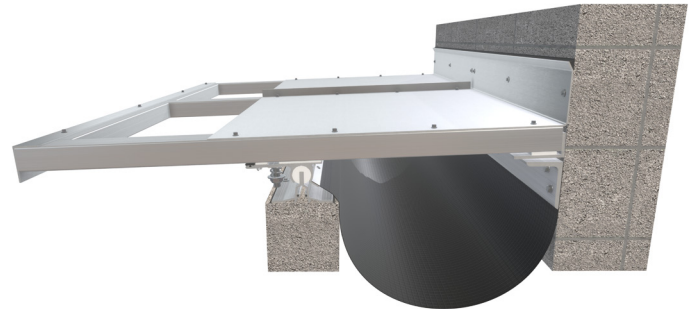
- Material - Aluminum 6061-T6 or 6105-T5
Acetal rod - low friction, high density polymer
Acetal plates - low friction, high density polymer

Bulb Gasket

- Material - EPDM, ASTM D2000
- Durometer - 74A
- Color - Black

Vapor Barrier

- Material: 7-Ply Polyethylene, ASTM-E-1745-11
- Color: Black
- 3" Tensile Strength: 275 lbs., ASTM-D-882
- Puncture Strength: 79 lbs., ASTM-D-4833
- PPT Resistance: 62 lbs., ASTM-D-2582



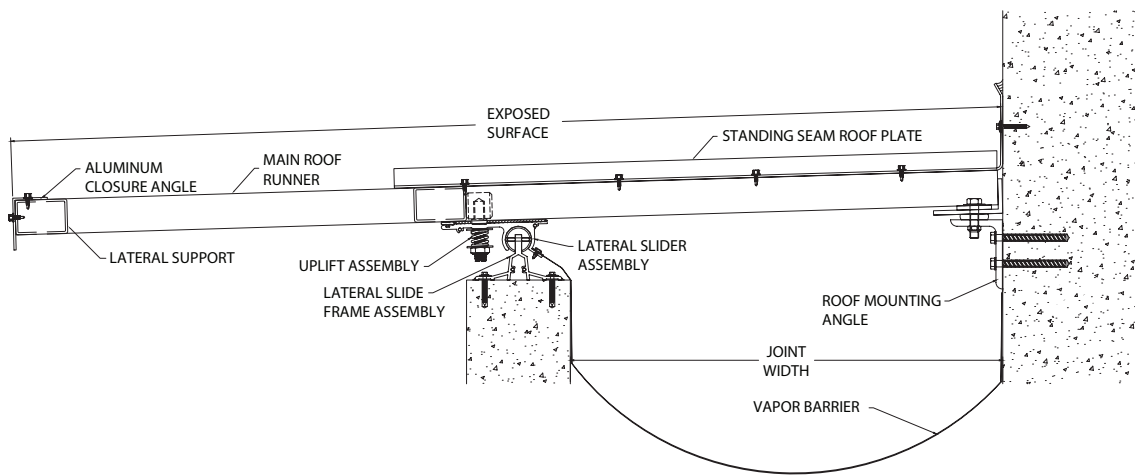
Capable of Lateral Movement

MARC & MARR

MODEL	JOINT WIDTH	MINIMUM OPENING	MAXIMUM OPENING	EXPOSED SURFACE	BLOCKOUT WIDTH	BLOCKOUT HEIGHT
MARC-1800	18.00" (457mm)	4.00" (102mm)	36.00" (914mm)	43.25" (1,099mm)	N/A	N/A
MARC-1900	19.00" (483mm)	4.00" (102mm)	38.00" (965mm)	45.25" (1,149mm)	N/A	N/A
MARC-2000	20.00" (508mm)	4.00" (102mm)	40.00" (1,016mm)	47.25" (1,200mm)	N/A	N/A
MARC-2100	21.00" (533mm)	4.00" (102mm)	42.00" (1,067mm)	49.25" (1,251mm)	N/A	N/A
MARC-2200	22.00" (559mm)	4.00" (102mm)	44.00" (1,118mm)	51.25" (1,302mm)	N/A	N/A
MARC-2300	23.00" (584mm)	4.00" (102mm)	46.00" (1,168mm)	53.25" (1,353mm)	N/A	N/A
MARC-2400	24.00" (610mm)	4.00" (102mm)	48.00" (1,219mm)	55.25" (1,403mm)	N/A	N/A
MARC-2500	25.00" (635mm)	4.00" (102mm)	50.00" (1,270mm)	57.25" (1,454mm)	N/A	N/A
MARC-2600	26.00" (660mm)	4.00" (102mm)	52.00" (1,321mm)	59.25" (1,505mm)	N/A	N/A
MARC-2700	27.00" (686mm)	4.00" (102mm)	54.00" (1,372mm)	61.25" (1,556mm)	N/A	N/A
MARC-2800	28.00" (711mm)	4.00" (102mm)	56.00" (1,422mm)	63.25" (1,607mm)	N/A	N/A
MARC-2900	29.00" (737mm)	4.00" (102mm)	58.00" (1,473mm)	65.25" (1,657mm)	N/A	N/A
MARC-3000	30.00" (762mm)	4.00" (102mm)	60.00" (1,524mm)	67.25" (1,708mm)	N/A	N/A
MARC-3100	31.00" (787mm)	4.00" (102mm)	62.00" (1,575mm)	69.25" (1,759mm)	N/A	N/A
MARC-3200	32.00" (813mm)	4.00" (102mm)	64.00" (1,626mm)	71.25" (1,810mm)	N/A	N/A
MARC-3300	33.00" (838mm)	4.00" (102mm)	66.00" (1,676mm)	73.25" (1,861mm)	N/A	N/A
MARC-3400	34.00" (864mm)	4.00" (102mm)	68.00" (1,727mm)	75.25" (1,911mm)	N/A	N/A
MARC-3500	35.00" (889mm)	4.00" (102mm)	70.00" (1,778mm)	77.25" (1,962mm)	N/A	N/A
MARC-3600	36.00" (914mm)	4.00" (102mm)	72.00" (1,829mm)	79.25" (2,013mm)	N/A	N/A

NOTE:

This product is factory customized to fit your project needs. Please call the factory to discuss movement data and requirements.



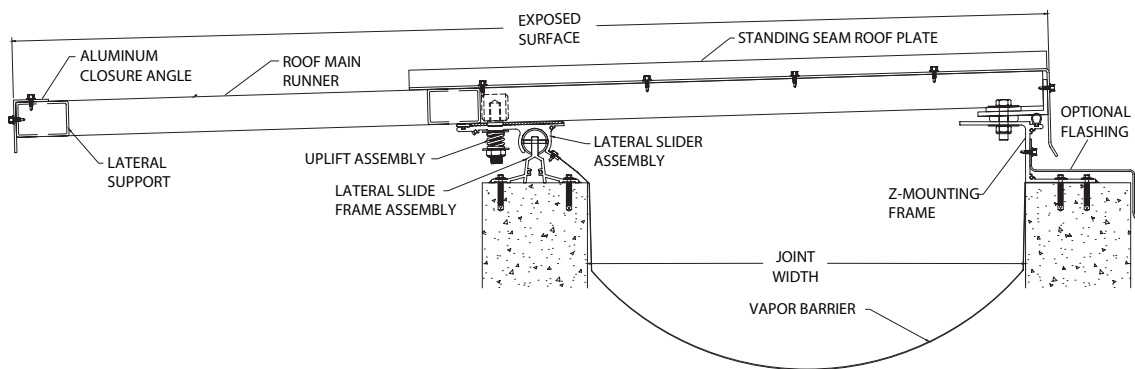
MARC

MARC & MARR

MODEL	JOINT WIDTH	MINIMUM OPENING	MAXIMUM OPENING	EXPOSED SURFACE	BLOCKOUT WIDTH	BLOCKOUT HEIGHT
MARR-1800	18.00" (457mm)	4.00" (102mm)	36.00" (914mm)	45.13" (1,146mm)	N/A	N/A
MARR-1900	19.00" (483mm)	4.00" (102mm)	38.00" (965mm)	47.13" (1,197mm)	N/A	N/A
MARR-2000	20.00" (508mm)	4.00" (102mm)	40.00" (1,016mm)	49.13" (1,248mm)	N/A	N/A
MARR-2100	21.00" (533mm)	4.00" (102mm)	42.00" (1,067mm)	51.13" (1,299mm)	N/A	N/A
MARR-2200	22.00" (559mm)	4.00" (102mm)	44.00" (1,118mm)	53.13" (1,350mm)	N/A	N/A
MARR-2300	23.00" (584mm)	4.00" (102mm)	46.00" (1,168mm)	55.13" (1,400mm)	N/A	N/A
MARR-2400	24.00" (610mm)	4.00" (102mm)	48.00" (1,219mm)	57.13" (1,451mm)	N/A	N/A
MARR-2500	25.00" (635mm)	4.00" (102mm)	50.00" (1,270mm)	59.13" (1,502mm)	N/A	N/A
MARR-2600	26.00" (660mm)	4.00" (102mm)	52.00" (1,321mm)	61.13" (1,553mm)	N/A	N/A
MARR-2700	27.00" (686mm)	4.00" (102mm)	54.00" (1,372mm)	63.13" (1,604mm)	N/A	N/A
MARR-2800	28.00" (711mm)	4.00" (102mm)	56.00" (1,422mm)	65.13" (1,654mm)	N/A	N/A
MARR-2900	29.00" (737mm)	4.00" (102mm)	58.00" (1,473mm)	67.13" (1,705mm)	N/A	N/A
MARR-3000	30.00" (762mm)	4.00" (102mm)	60.00" (1,524mm)	69.13" (1,756mm)	N/A	N/A
MARR-3100	31.00" (787mm)	4.00" (102mm)	62.00" (1,575mm)	71.13" (1,807mm)	N/A	N/A
MARR-3200	32.00" (813mm)	4.00" (102mm)	64.00" (1,626mm)	73.13" (1,858mm)	N/A	N/A
MARR-3300	33.00" (838mm)	4.00" (102mm)	66.00" (1,676mm)	75.13" (1,908mm)	N/A	N/A
MARR-3400	34.00" (864mm)	4.00" (102mm)	68.00" (1,727mm)	77.13" (1,959mm)	N/A	N/A
MARR-3500	35.00" (889mm)	4.00" (102mm)	70.00" (1,778mm)	79.13" (2,010mm)	N/A	N/A
MARR-3600	36.00" (914mm)	4.00" (102mm)	72.00" (1,829mm)	81.13" (2,061mm)	N/A	N/A

NOTE:

This product is factory customized to fit your project needs. Please call the factory to discuss movement data and requirements.



MARR