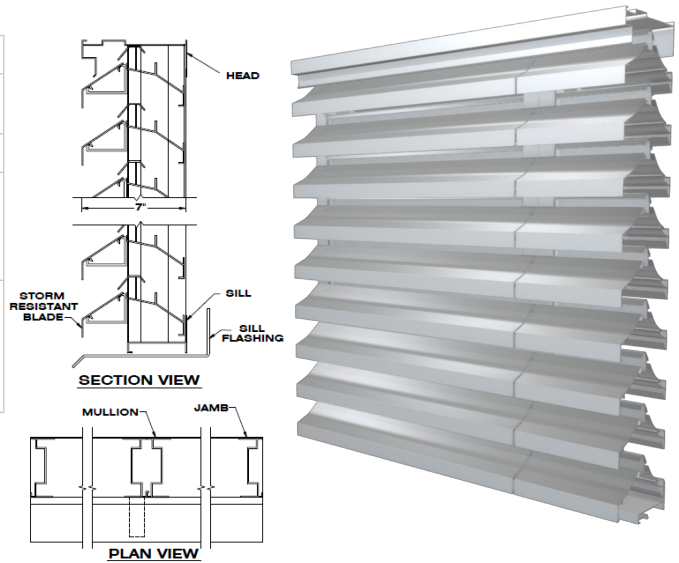


Model RS-7315

7" (177.8 mm) Storm Resistant Fixed Horizontal Louver

Material:

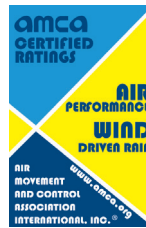
Material:	6063-T6 Alloy
Nominal Thickness (heads, sills, jambs, & mullions):	0.068" (1.73 mm)
Nominal Blade Thickness:	0.068" (1.73 mm)
Furnished With:	Birdscreen: ½" (12.7mm) intercrimp aluminum mesh, 0.063" (1.60 mm) diameter wire removeable aluminum bird screen in an aluminum frame
Additional Options (at additional cost):	Insect screen (in lieu of bird screen), Continuous clip angles for attachment Sheet blank off, Insulated blank off Sill pans, Flange frames, Integrated glazing frames



Test Summary:
For a 4 Foot by 4 Foot Unit.

Tested with mill finish and no screen

- Free area = 8.09 ft² (0.751 m²)
- Percent free area = 50.5%
- Intake pressure drop at 1000 FPM free area velocity = 0.40 in H₂O (100.3 Pa)
- To maintain a CLASS A (99%) effectiveness rating* with:
 - a 29 mph wind speed and rainfall rate of 3 in/hr
 - Max. intake core velocity 1.5 m/s (283 FPM)
 - Max. intake free area velocity 2.9 m/s (567 FPM)



Construction Specialties Inc. certifies that the louver model RS-7315 shown herein is licensed to bear the AMCA Seal. The ratings shown are based on tests and procedures performed in accordance with AMCA Publication 511 and comply with the requirements of the AMCA Certified ratings Program. The AMCA Certified Ratings Seal applies to wind driven rain and air performance ratings.



Discharge Coefficient

Intake Cd = 0.24 (Class 3)
 AMCA certifies the coefficient class only

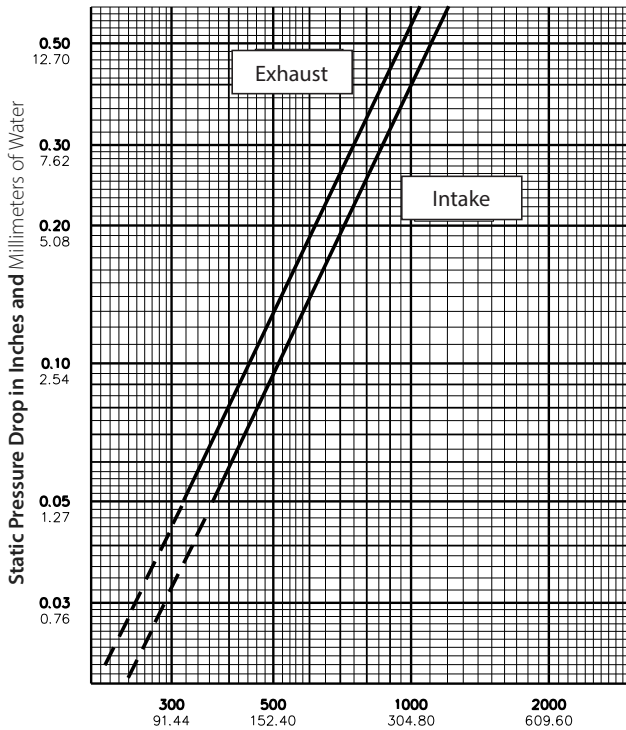
Wind Driven Rain Performance: Tested with 1m² core area, mill finish and no screen*

29.1 mph (13 m/s) & 3" (75 mm) rain per hour

Core Velocity Through Cal. Plate (m/s):	0.0	0.5	1.0	1.5	2.0	2.5	3.0	3.5
Core Velocity Through Louver (ft/min):	0	132	196	283	375	468	587	673
Free Area Velocity (ft/min):	0	264	392	567	751	937	1175	1347
Rating Effectiveness:	A	A	A	A	B	C	D	D
Effectiveness Ratio (%):			100	99.8	97	92.1	72.9	57.4
Effectiveness Rating:	A = 1 to 0.99		B = 0.989 to 0.95		C = 0.949 to 0.80		D = Below 0.80	

Model RS-7315

7" (177.8 mm) Storm Resistant Fixed Horizontal Louver



Air Velocity in Feet and Meters per Minute Through Free Area

Data corrected to standard air density.

48" x 48" (121.92cm x 121.92cm) louver tested to figure 5.5.

Free Area Table (Free area in sq. feet and sq. meters)

For additional sizes, please visit:

<https://www.c-sgroup.com/louvers-airflow-tool>

Width in Inches and Meters

	18	24	30	36	42	48	54	60	66
0.46	0.73	1.02	1.32	1.61	1.91	2.21	2.50	2.80	2.94
0.46	0.07	0.09	0.12	0.15	0.18	0.20	0.23	0.26	0.27
24	1.21	1.70	2.20	2.69	3.18	3.68	4.17	4.66	4.91
0.61	0.11	0.16	0.20	0.25	0.30	0.34	0.39	0.43	0.46
30	1.45	2.05	2.64	3.23	3.82	4.41	5.00	5.59	6.18
0.76	0.14	0.19	0.24	0.30	0.35	0.41	0.46	0.52	0.57
36	1.94	2.73	3.52	4.30	5.09	5.88	6.67	7.46	7.85
0.91	0.18	0.25	0.33	0.40	0.47	0.55	0.62	0.69	0.73
42	2.18	3.07	3.95	4.84	5.73	6.62	7.50	8.39	8.83
1.07	0.20	0.28	0.37	0.45	0.53	0.61	0.70	0.78	0.82
48	2.67	3.75	4.83	5.92	7.00	8.09	9.17	10.25	10.80
1.22	0.25	0.35	0.45	0.55	0.65	0.75	0.85	0.95	1.00
54	2.91	4.09	5.27	6.46	7.64	8.82	10.00	11.19	11.78
1.37	0.27	0.38	0.49	0.60	0.71	0.82	0.93	1.04	1.09
60	3.39	4.77	6.15	7.53	8.91	10.29	11.67	13.05	13.74
1.52	0.32	0.44	0.57	0.70	0.83	0.96	1.08	1.21	1.28
66	3.63	5.11	6.59	8.07	9.55	11.03	12.51	13.98	14.72
1.68	0.34	0.47	0.61	0.75	0.89	1.02	1.16	1.30	1.37
72	4.12	5.79	7.47	9.15	10.82	12.50	14.17	15.85	16.69
1.83	0.38	0.54	0.69	0.85	1.01	1.16	1.32	1.47	1.55
78	4.60	6.48	8.35	10.22	12.09	13.97	15.84	17.71	18.65
1.98	0.43	0.60	0.78	0.95	1.12	1.30	1.47	1.65	1.73
84	4.85	6.82	8.79	10.76	12.73	14.70	16.67	18.64	19.63
2.13	0.45	0.63	0.82	1.00	1.18	1.37	1.55	1.73	1.82
90	5.33	7.50	9.67	11.84	14.00	16.17	18.34	20.51	21.59
2.29	0.50	0.70	0.90	1.10	1.30	1.50	1.70	1.91	2.01
96	5.57	7.84	10.11	12.37	14.64	16.91	19.17	21.44	22.57
2.44	0.52	0.73	0.94	1.15	1.36	1.57	1.78	1.99	2.10
102	6.06	8.52	10.99	13.45	15.91	18.38	20.84	23.31	24.54
2.59	0.56	0.79	1.02	1.25	1.48	1.71	1.94	2.17	2.28
108	6.30	8.86	11.43	13.99	16.55	19.11	21.68	24.24	25.52
2.74	0.59	0.82	1.06	1.30	1.54	1.78	2.01	2.25	2.37
114	6.78	9.54	12.30	15.06	17.82	20.58	23.34	26.10	27.48
2.90	0.63	0.89	1.14	1.40	1.66	1.91	2.17	2.42	2.55
120	7.03	9.88	12.74	15.60	18.46	21.32	24.18	27.03	28.46
3.05	0.65	0.92	1.18	1.45	1.71	1.98	2.25	2.51	2.64
126	7.51	10.57	13.62	16.68	19.73	22.79	25.84	28.90	30.43
3.20	0.70	0.98	1.27	1.55	1.83	2.12	2.40	2.68	2.83
132	7.75	10.91	14.06	17.22	20.37	23.52	26.68	29.83	31.41
3.35	0.72	1.01	1.31	1.60	1.89	2.19	2.48	2.77	2.92
138	8.24	11.59	14.94	18.29	21.64	24.99	28.34	31.70	33.37
3.51	0.77	1.08	1.39	1.70	2.01	2.32	2.63	2.94	3.10
144	8.72	12.27	15.82	19.37	22.92	26.46	30.01	33.56	35.33
3.66	0.81	1.14	1.47	1.80	2.13	2.46	2.79	3.12	3.28
150	8.97	12.61	16.26	19.91	23.55	27.20	30.85	34.49	36.32
3.81	0.83	1.17	1.51	1.85	2.19	2.53	2.87	3.20	3.37
156	9.45	13.29	17.14	20.98	24.83	28.67	32.51	36.36	38.28
3.96	0.88	1.23	1.59	1.95	2.31	2.66	3.02	3.38	3.56
162	9.69	13.63	17.58	21.52	25.46	29.40	33.35	37.29	39.26
4.11	0.90	1.27	1.63	2.00	2.37	2.73	3.10	3.46	3.65
168	10.18	14.32	18.46	22.60	26.74	30.87	35.01	39.15	41.22
4.27	0.95	1.33	1.71	2.10	2.48	2.87	3.25	3.64	3.83
174	10.42	14.66	18.90	23.13	27.37	31.61	35.85	40.09	42.21
4.42	0.97	1.36	1.76	2.15	2.54	2.94	3.33	3.72	3.92
180	10.90	15.34	19.77	24.21	28.64	33.08	37.52	41.95	44.17
4.57	1.01	1.42	1.84	2.25	2.66	3.07	3.49	3.90	4.10

Upper Numerals English Units/Lower Numerals Metric Units