

# MODEL FB24 1"-4" WALL FIRE BARRIER INSTALLATION INSTRUCTIONS



## IMPORTANT INFORMATION

Prior to the commencement of Installation all materials **MUST** be inspected for Damage. Any damage must be reported to Construction Specialties as soon as possible, so that replacement materials may be furnished without delay.

All work must be completed as per Architect's Approved "Shop Drawings", and in accordance with these Installation Instructions. When installation is complete, all materials must be protected from damage until the Architect's FINAL INSPECTION.

All materials should be arranged in the order that they are to be installed. All hardware required for each portion of the work should be placed with the appropriate materials.

Please review all Approved Shop Drawings and this Document to familiarize yourself with all the details and components of this assembly.

**IMPORTANT:**  
**READ THROUGH ALL INSTRUCTIONS PRIOR TO STARTING INSTALLATION**

03/10/2025



**Construction Specialties™**

6696 Route 405 Highway, Muncy PA 17756  
(800) 233-8493 • Fax (570) 546-5169 • [www.c-sgroup.com](http://www.c-sgroup.com)

This document is the property of Construction Specialties, Inc. and contains CONFIDENTIAL PROPRIETARY INFORMATION that is not to be disclosed to third parties and is not to be used without approval in writing from Construction Specialties, Inc.

### General Instructions:

**ALWAYS WEAR GLOVES** when handling and cutting the barrier.

Before beginning installation, review the architectural drawings and approved Construction Specialties Inc. shop drawings to familiarize yourself with the joint cover models and locations.

Check all of the fire barrier components to confirm that the correct fire barrier model and size have been received. Also, check for materials that may have been damaged during shipping. Report all incorrect and/or damaged components to CS at 800-233-8493.

Read through all the steps of these instructions prior to beginning work.

### TOOLS:

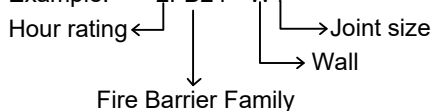
The following tools may be needed for installation of the 2FB24 fire barrier:

- Fabric or Leather Work Gloves
- Dust Mask
- Permanent Marker
- Measuring Tape
- Utility Knife
- Scalloped Knife Blade

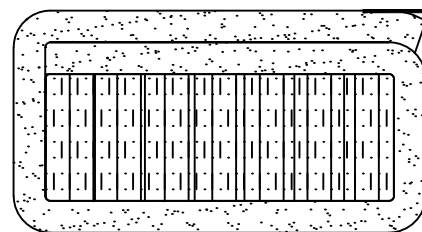
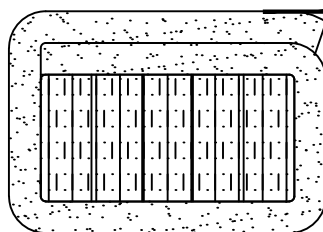
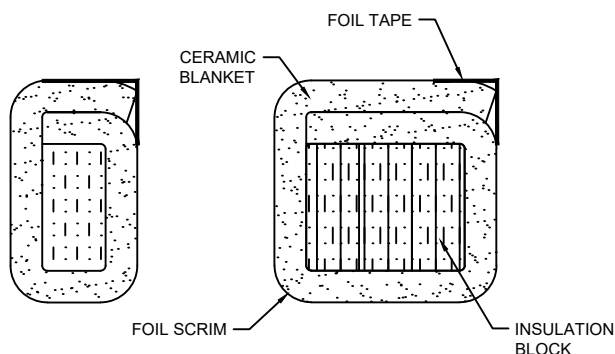
Model designating - 2FB24 Walls 1"-4" (Nominal Joint Width)

FB24 Nomenclature

Example:



## INSTALLATION NOTES



1" WALL FB24

2" WALL FB24

3" WALL FB24

4" WALL FB24

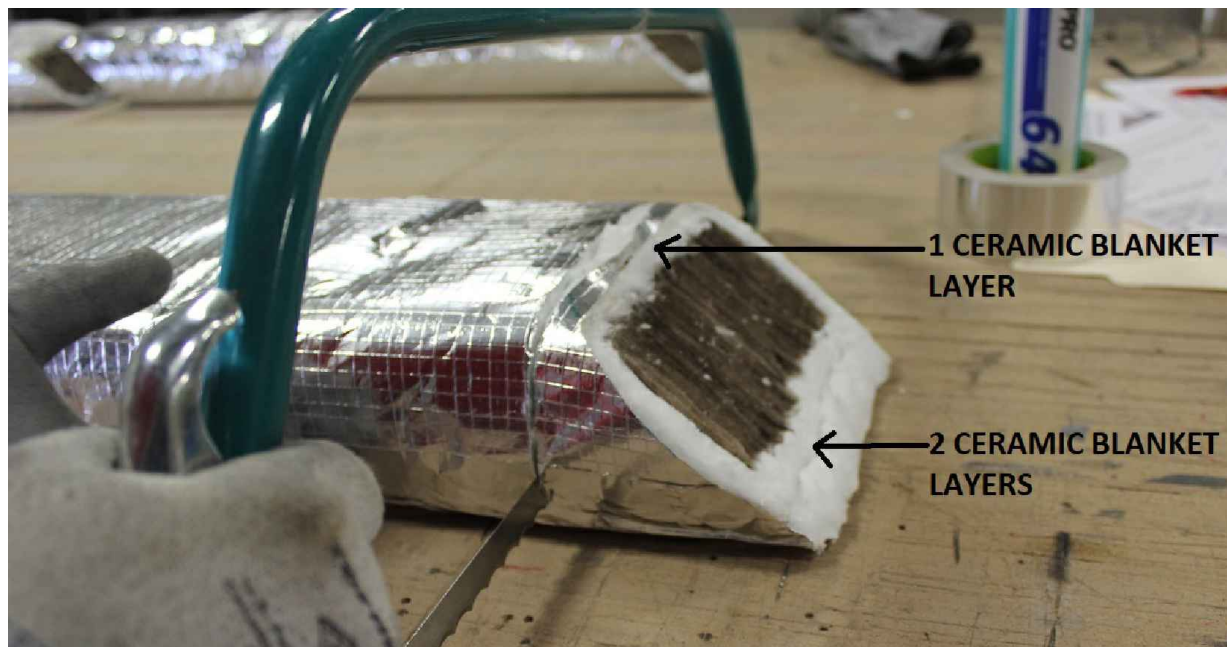
- 1.) The FB24 wall Fire Barrier components are:
  - a. Fire Barrier Assembly (8' long with 45 degree angle cut ends)
  - b. High Temperature Silicone
  - c. Foil Tape
- 2.) If job has floor fire barrier, the **floor fire barrier must be installed first** and must extend into wall opening deep enough for wall fire to set on top.
- 3.) If the job has any **Fire Barrier Transitions** start by installing the transitions before the straight run lengths of the Fire Barrier. A Transition is an area where the Fire Barrier changes direction (a 90° corner, a 90° Up - horizontal to vertical condition, a "T" or Crossover section etc.).

# STEP 1

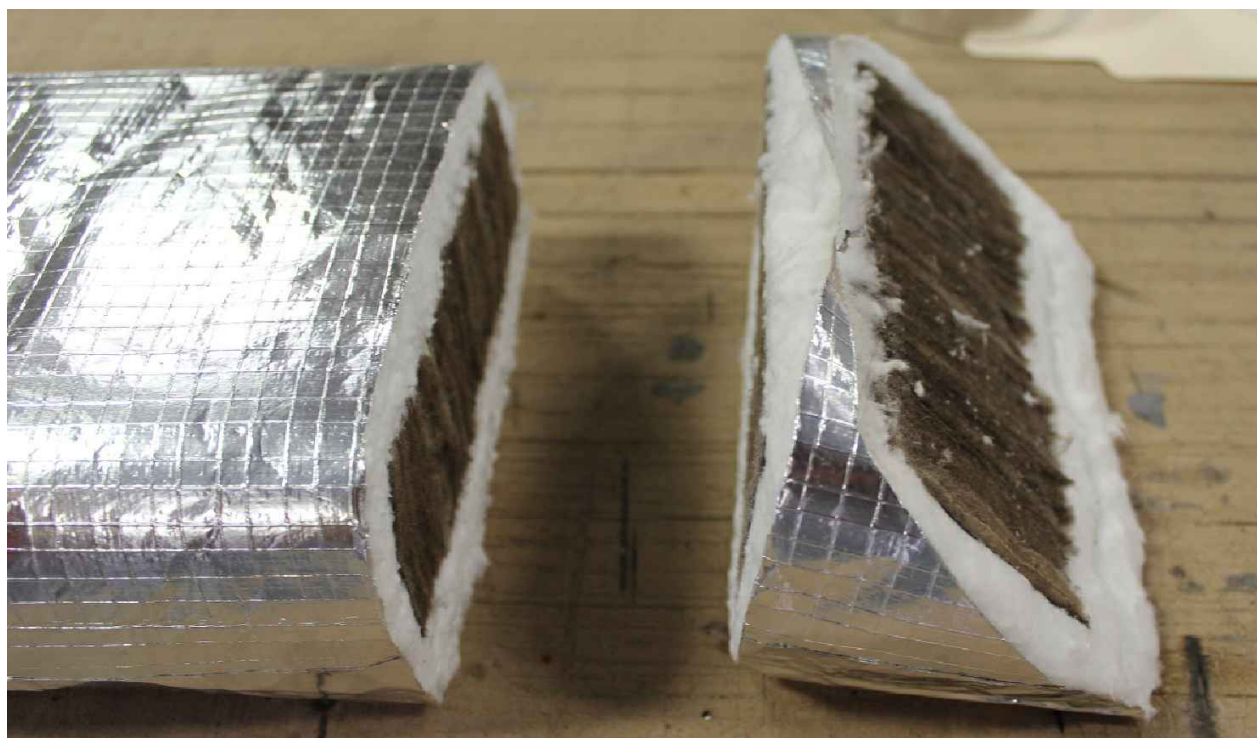
## SQUARE CUT FIRE BARRIER ASSEMBLY

Note: The wall Fire Barrier Assembly lengths come with 45 degree beveled ends. Starting length of the Fire Barrier Assembly needs to be cut square.

- 1.1) To install the first length, if starting against the floor or floor fire barrier, square cut one end of the Wall Fire Barrier Assembly. A scalloped knife blade works best in cutting the fire barrier material.
- 1.2) Position one length of the Wall Fire Barrier Assembly with the single layer of ceramic blanket and the ETL label facing upward. Cut the fire barrier assembly just back from the beveled top edge to create a square cut end. (Fig. 1A & 1B)



(Fig. 1A)



(Fig. 1B)

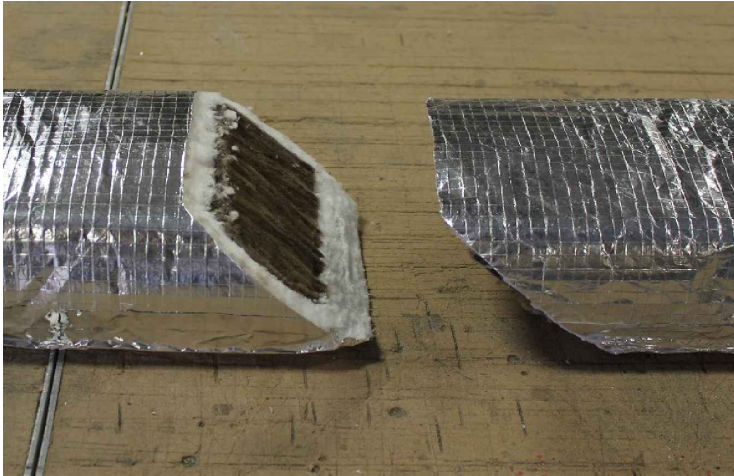


# STEP 2

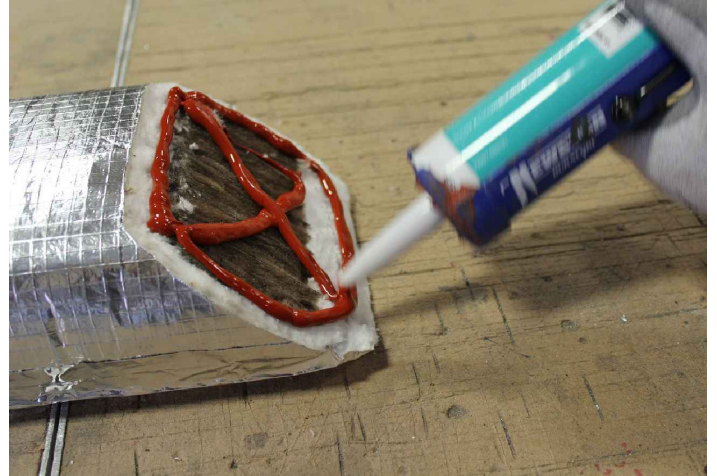
## SPLICING FB24 WALL LENGTHS

Note: FB24 Wall Fire Barrier is Supplied in 8' lengths. For longer lengths of FB24 Wall Fire Barrier use the following instructions to splice together two or more sections. It is recommended to splice the Fire Barrier outside the joint space.

- 2.1) Lay each Wall Fire Barrier length on a flat surface, with the single ceramic blanket layer and the ETL label facing upward. Lay each length end to end of each other. (Fig 2A)
- 2.2) Apply a bead of high temperature silicone caulk around the perimeter of the fire barrier ceramic blanket on the beveled cut end of the first length. Apply additional caulk, creating an X, within the perimeter caulk bead. (Fig. 2B).

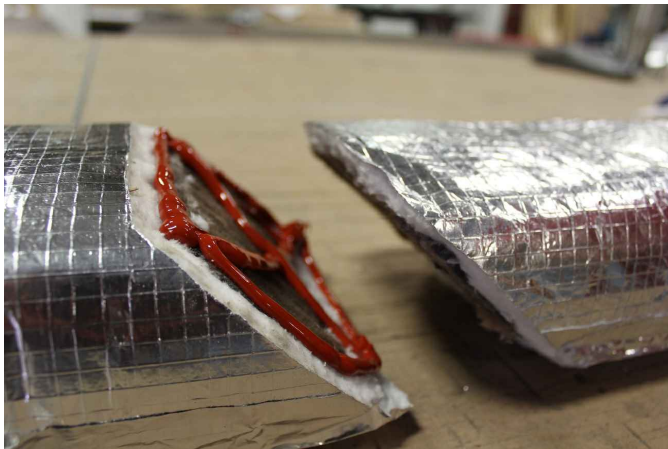


(Fig. 2A)



(Fig. 2B)

- 2.3) Aligning the two beveled ends of wall fire barrier seat the second stick length into the silicone bead of the first fire barrier length. (Fig. 2C-2D)



(Fig. 2C)



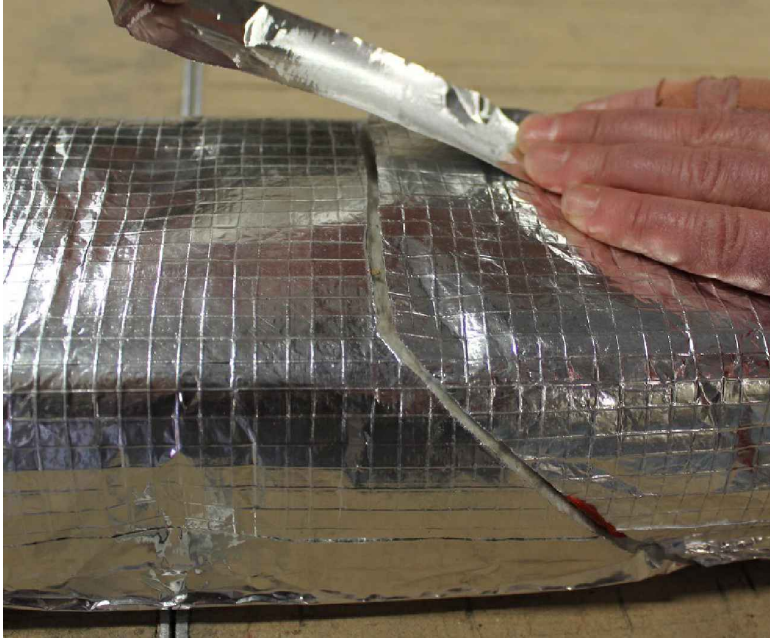
(Fig. 2D)



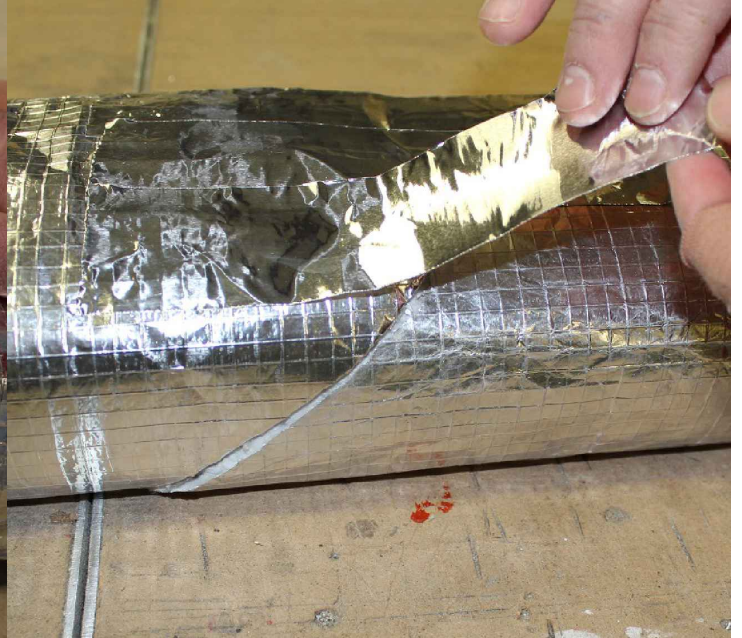
# STEP 2 CON'T

## SPLICING FB24 WALL LENGTHS

- 2.4) Using the supplied Foil Tape, approximately 6" in length, apply tape perpendicular cross splice joint of the two adhered fire barrier lengths. Tape both top and bottom sections, covering the entire splice joint. (Fig. 2E-2F)
- 2.5) Apply Foil Tape along the diagonal splice on each side of the Fire Barrier lengths. (Fig. 2G)



(Fig. 2E)



(Fig. 2F)



(Fig. 2G)



# STEP 3

## INSTALLATION IN WALL JOINT

Note: Wall Fire Barrier is to extend the full height of the rated wall, from floor slab to the underside of the floor slab above. The FB24 wall fire barrier assemblies are supplied in 8' lengths and are spliced together to cover the overall height.

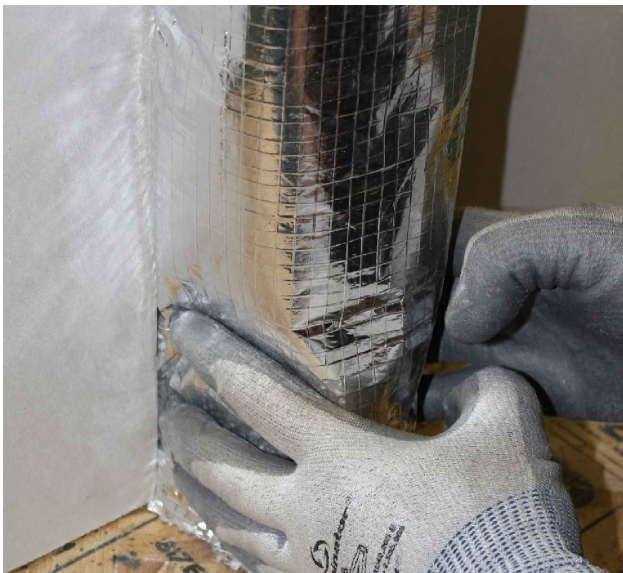
- 3.1) Begin installation at the bottom of the wall joint with the square cut end of fire barrier and the ETL label facing outward towards you. Stand the Wall Fire Barrier centering over the joint and pinch in, from the bottom of the joint and working upward, the foil sides of the fire barrier installing within the joint space. (Fig. 3A-3D)



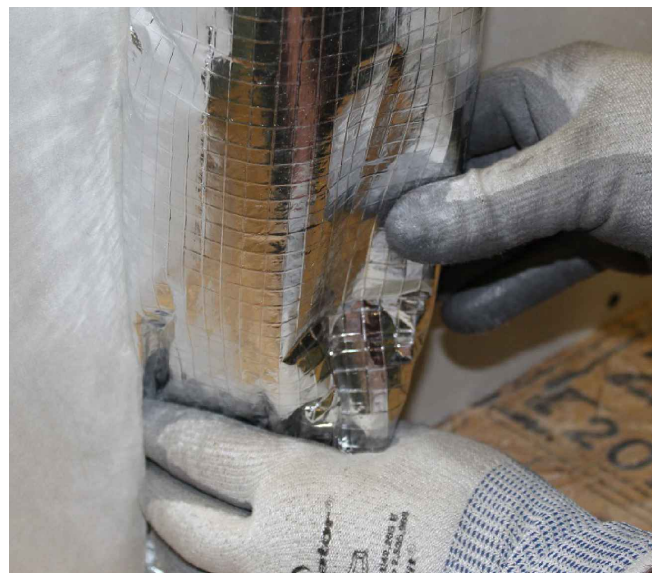
(Fig. 3A)



(Fig. 3B)



(Fig. 3C)



(Fig. 3D)

# STEP 3 CONT

## INSTALLATION IN WALL JOINT

3.2) Continue to compress and insert the fire barrier into the joint space (Fig. 3E-3G)



(Fig. 3E)



(Fig. 3F)



(Fig. 3G)

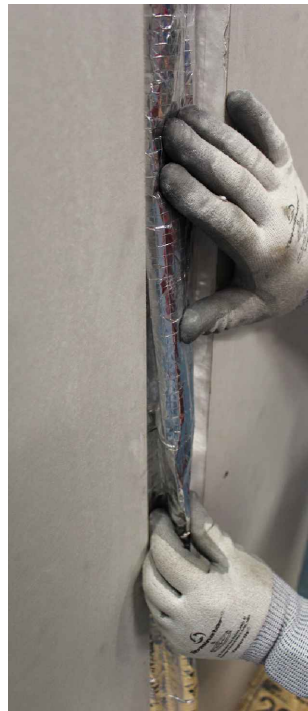
3.3) Insert nozzle of caulking gun between wall substrate and the ceramic blanket of Fire Barrier. Apply a bead of High Temperature Silicone caulking down the length of Fire Barrier installed. Repeat for opposite side of wall joint. (Fig. 3H)

3.4.) Pinch and fold over excess foiled fire barrier blanket folding flat to one side of the joint space, as you work down the length of fire barrier. The foil blanket of the fire barrier, should be slightly recessed from the wall face and completely installed in the joint space. (Fig. 3I-3K)

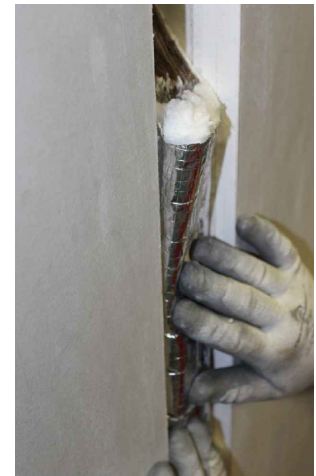
3.5.) This completes the FB24 wall fire barrier installation.



(Fig. 3H)



(Fig. 3I)



(Fig. 3J)



(Fig. 3K)

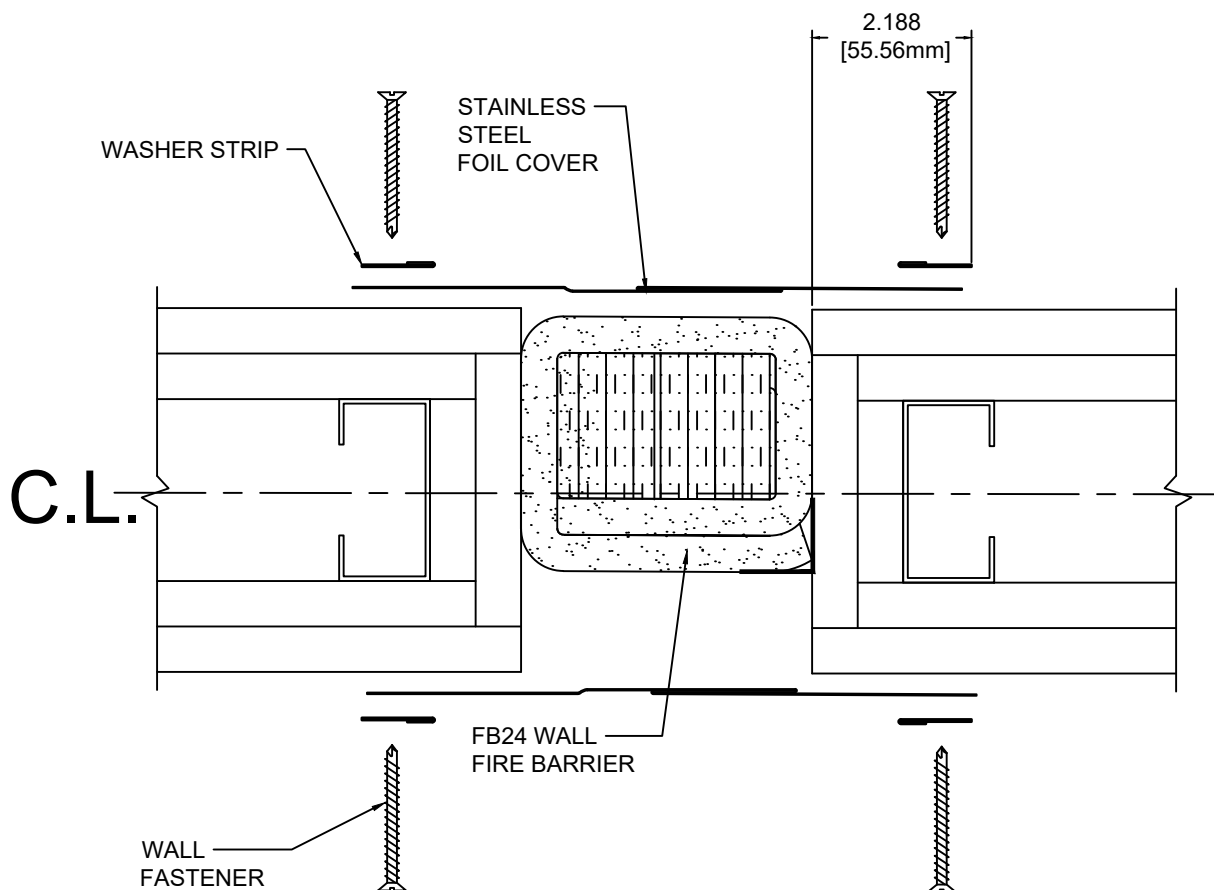
# STEP 4

## SSF WITH FB24 WALL FIRE BARRIER

### SSF-FB24 WALL INSTALLATION

Note: The Stainless Steel Foil Cover is to be installed at wall joint applications extending from the finished ceiling (where the architectural joint cover ends) to the underside of the deck above.

- 4.1) Place a length of the Stainless Steel Foil Cover over the joint, cut the Stainless Steel Foil Cover to length as needed. Measure 2 3/16" over from joint edge and snap a chalk line parallel to the joint edge. Repeat for the opposite side of the joint.
- 4.2) Position the Stainless Steel Foil Cover over the joint and align edge with the chalk line. Use masking tape to temporally hold the foil in place. Install the Washer Strip, aligning the end with the chalk line and Stainless Steel Foil edge. Fasten in place, 18" O.C., with the supplied fasteners per manufacturer's guidelines.
- 4.3) Repeat this installation procedure for the opposite side of the joint and for all additional lengths of Stainless Steel Foil Cover.





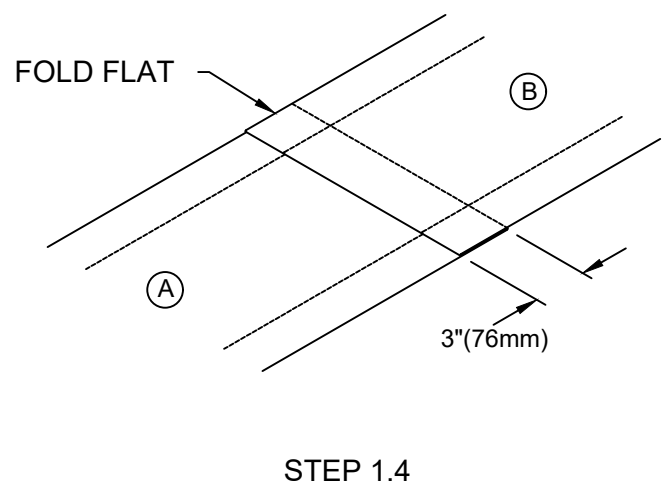
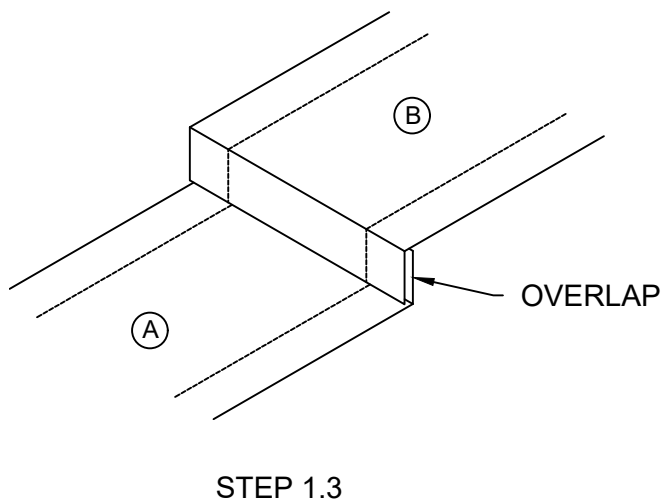
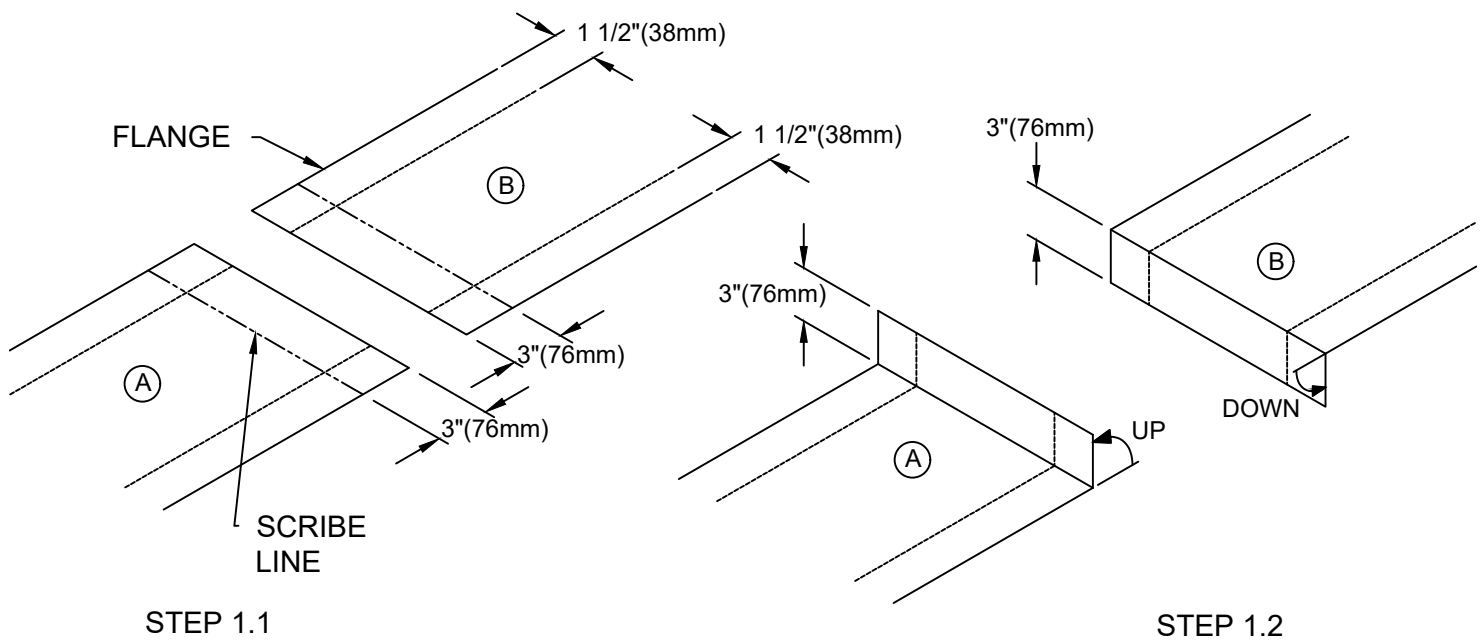
# STEP 4 CONT

## SSF WITH FB24 WALL FIRE BARRIER

### SSF SPLICING INSTALLATION

Note: When longer lengths of Stainless Steel Foil Cover is required, lengths may be spliced together as instructed. To create a Field Splice it may be best to leave extra on the two lengths and trim the run length after the splice is created.

- 4.4) Position the ends of the two lengths of Stainless Steel Foil to be spliced near each other. Measure in 3" from the end and scribe a folding line on the surface of each piece.
- 4.5) Using a straight edge as a guide, fold the end of length "A" up at 90° and the end of length of "B" down at 90°.
- 4.6 Place piece "B" over piece "A" so the folded, 3" lengths overlap.
- 4.7) Fold the overlapping 3" legs of both pieces flat so that they interlock to form an overlapping splice.



# FLOOR TO WALL TRANSITION

## STEP 1

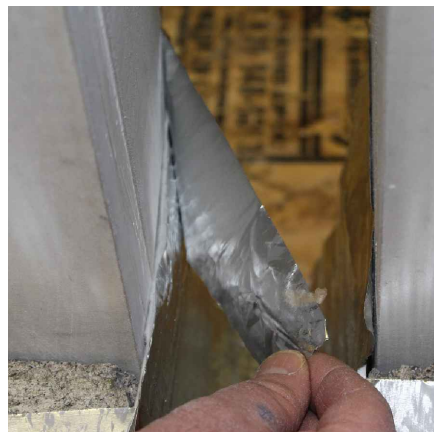
### FLOOR FIRE BARRIER INSTALLATION

Note: The following instructions are to be used to create a 90° FB22 floor to FB24 wall transition from two fire barrier segments.

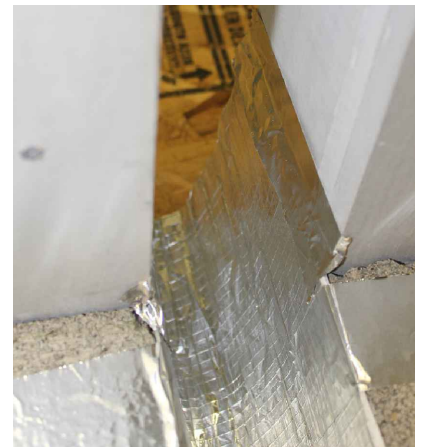
- 1.1) Install the floor FB22 fire barrier system into the wall cavity deep enough to catch the entire depth of the wall FB24 fire barrier.  
(Fig. T1- Picture is taken from the backside of joint showing the floor fire barrier extending to the wall fire barrier depth.)
- 1.2) Apply foil tape along the top edge of the FB22 floor ceramic paper within the joint space attaching to the substrate wall. (Fig. T2)  
Follow installation instructions of 12KE (FB22 1"-2" floor) - 12KD (FB22 3"-4" floor) to complete the floor fire barrier installation.  
(Fig. T3-T4)
- 1.3) With the Floor Fire Barrier installed, apply high temperature silicone caulk to the top of the insulation block material within the wall cavity area only. (Fig. T5)



(Fig. T1)



(Fig. T2)



(Fig. T3)



(Fig. T4)



(Fig. T5)



# FLOOR TO WALL TRANSITION

## STEP 2

### WALL FIRE BARRIER INSTALLATION

Note: Use FB24 wall instructions to install wall fire barrier lengths.

- 2.1) Follow Wall installation instructions Step 1 to square cut the first length of wall fire barrier. Seat the square cut end into the applied high temperature silicone caulk applied to the floor fire barrier insulation block. Follow Steps 2 through 3 to complete the wall installation and splicing of the FB24 90° up transition. (Fig. T5-T6) This completes the transition installation.



(Fig. T5)



(Fig. T6)