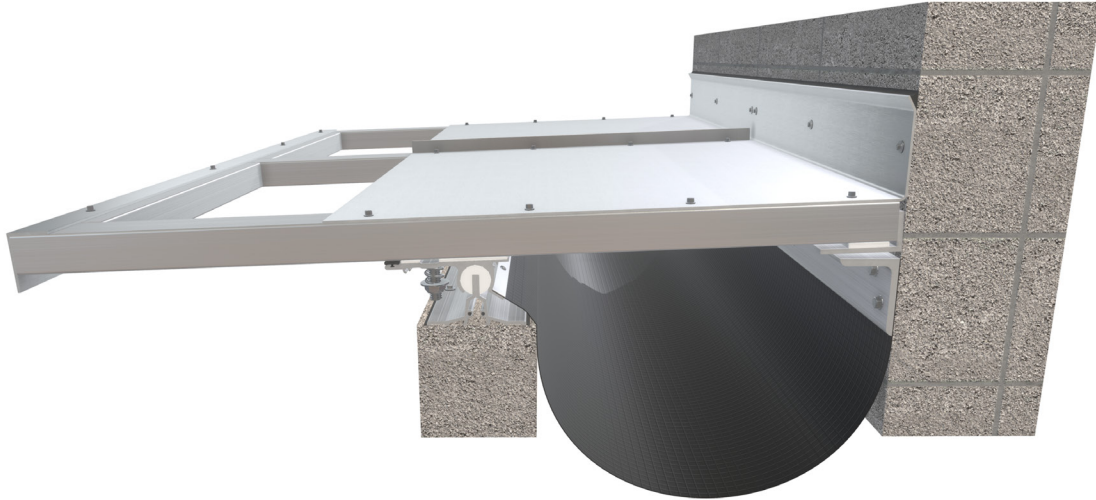


MARR Series



Model MARRC

This multi-axis roof cover system is capable of spanning large joint openings and is comprised of extruded aluminum components and various mechanical hardware. The roof weldment is a structural frame assembly with a standing seam roof cover plate. The system is designed to accommodate movement of base isolated structures and is perfect for areas where large movement or wind loads are required.

Advantages

- Designed to accommodate multi-directional movement
- Works well on base isolated structures
- Durable ladder frame assembly
- Low maintenance
- Factory transitions available
- Can be painted to match surrounding finishes



[View 3D Model](#) →

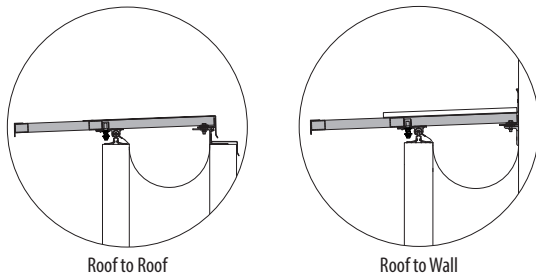
MARR Series

Product Details

- Joint sizes range from 18" to 36" (457.2mm to 914.4mm)
- 10' (304.8cm) stock lengths
- Meets ASTM E139



Model Details



MODEL	ROOF TO ROOF	ROOF TO WALL
MARR	•	
MARC		•

Standard Finish



Optional Finish



Aluminum in contact with concrete/masonry will have a 2 mil heavy metal free high solids primer

See all finish options online at c-sgroup.com.

Warranty

- Standard Five-Year Warranty



Learn More →