

Pedimat®

Installation Instructions

Pedimat® M1, Pedimat AA M2 with Tapered Angle Frame

General Information

Open the pack list on the crate's exterior. Locate the shop drawings and installation instruction inside the box. Review contents and make sure all parts are present. For a rectangular installation, the pack list will include the number of modules and frame pieces. For odd-shaped installations, a drawing will be supplied identifying the module layout in numbered sequence.

If you discover that material is missing or defective, contact our customer service department immediately: 800.233.8493

Important Notes – Do Not Overlook

Prior to installation, ensure that the material is stored indoors and has acclimated to the environment's temperature for 24 hours.

Assess the site condition prior to installation ensuring the recess is:

- Free of debris and moisture
- The correct depth throughout
- Smooth and flat

High spots should be ground down. Low spots should be filled with a self-leveling grout. The side walls of the recess

should also be checked for plumb and defects as this could affect the frame installation (if applicable). If these conditions have been met, you can begin the installation.

Tools Required

Tools needed: a level, rubber mallet, $\frac{5}{32}$ " masonry drill bit, flathead screwdriver, #2 Phillips-head screwdriver, tape measure, carpenter's pencil or marker, utility knife, shop vacuum and PPE (gloves, glasses, ear protection, etc.)

If your system is shipped flat you will need a $\frac{3}{32}$ " hex tool and our supplemental instructions.

Installation Instructions



1. Start by dry fitting all frame pieces within the area and use a tape measure to ensure a proper fit. For odd-shaped layouts, match frame tags to the drawing on the pack list.



2. Using a straight edge, ensure the top frame edge is flush with the surrounding floor surface. Shim frame every 24" if necessary to achieve required height.

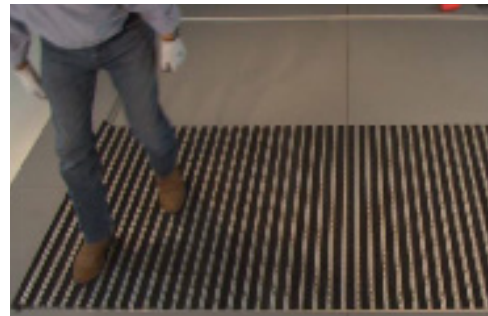
Pedimat® Installation Instructions (continued)

Pedimat® M1, Pedimat AA M2 with Tapered Angle Frame

Installation Instructions (continued)



3. Using the 5/32" masonry bit, drill into the concrete 24" on center. Fasten the frame with the supplied masonry anchors using a #2 Phillips-head screwdriver.



6. Align the mat into the recess.



4. For layout sequence of the mat units with multiple sections, refer to the shop drawings and the mark numbers placed on the backside of the mats.

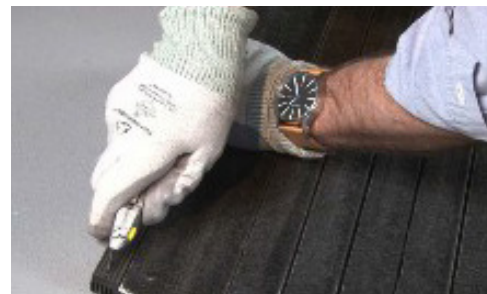
**If your Pedimat system was shipped in flat sections, refer to the supplemental instructions on the last page.*



7. Cut the oversized end trim flush to the edge of the rail.



5. Unroll the mats and place into the recess per the drawing layout.



8. For proper overall fit, adjust the end trim using a utility knife with a new, sharp blade. Remove excess trim equally at both ends. The end trim has grooves every 1/8" that you can use to run the blade across.

Pedimat® *Installation Instructions (continued)*

Pedimat® M1, Pedimat AA M2 with Tapered Angle Frame

Installation Instructions (continued)



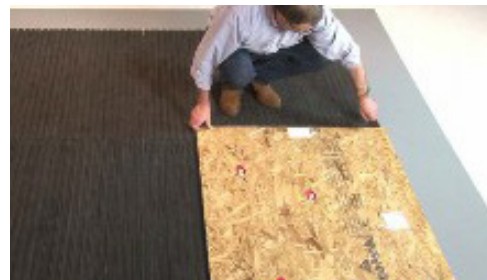
9. For beginners: we recommend using a straight edge to assist in cutting an accurate line. Once the end trim is adjusted, tuck the mat into the recess and push flat.



12. Clean the unit with a vacuum.



10. Repeat steps 8 -12 for adjacent sections.



13. If construction is to continue in the building, protect the unit with plywood sheathing.



11. Scuff or drag your heel to align the mat. It may be necessary to lift and flap/shake the mat for final alignment.



14. Care & Maintenance: to properly clean underneath the mat and avoid rail damage, roll back the mat edge to the 12th rail. Continue to roll back the mat holding that diameter.

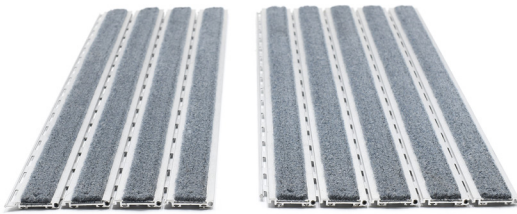
To view the installation video for this model, [click here.](#)

Pedimat® *Installation Instructions (continued)*

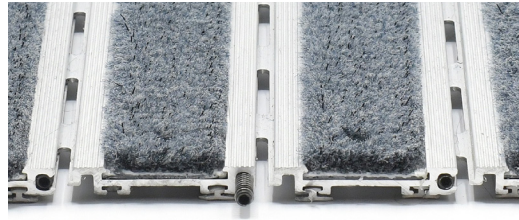
Pedimat® M1, Pedimat AA M2 with Tapered Angle Frame

Supplemental Instructions

If you opted to receive your Pedimat system in a **flat shipment** instead of rolled, the modules will need to be slid together. Follow these instructions.



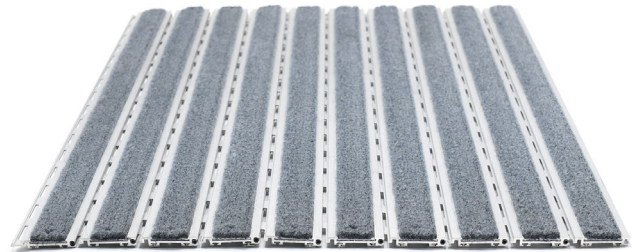
1. Align the modules with a hinge end and ball socket end together.



3. The set screw requires a $\frac{3}{32}$ " hex tool to tighten and loosen.



2. Slide the two modules together and lock in place using the supplied set screw.



4. Slide all modules together to achieve one single mat. The mat can be rolled up to the 12th rail for handling and cleaning.

Proceed with the additional steps noted on the regular installation instructions.