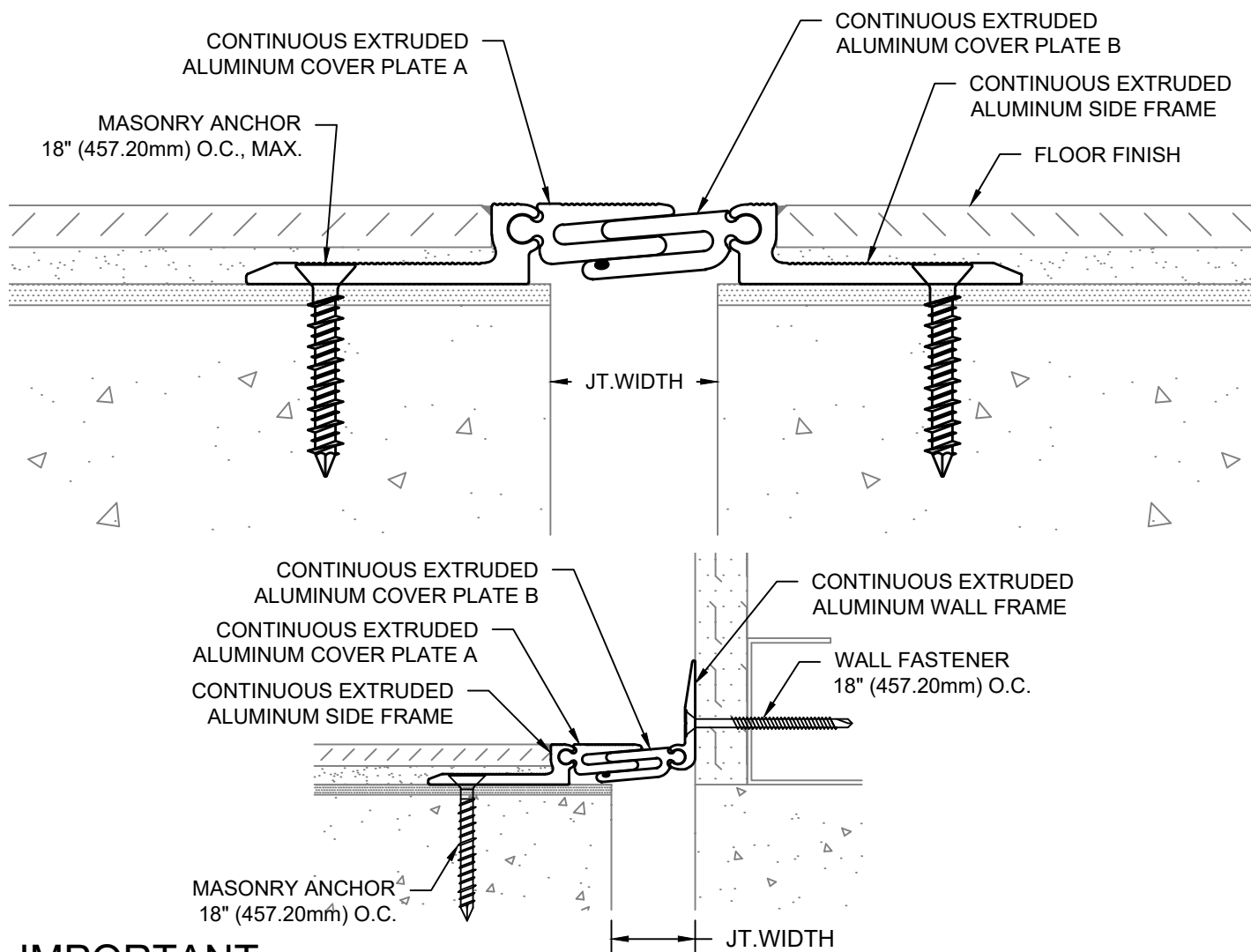


MODEL APF/W-100 INSTALLATION INSTRUCTIONS



IMPORTANT INFORMATION

Prior to the commencement of installation, all materials **MUST** be inspected for damage. Any damage must be reported to **CONSTRUCTION SPECIALTIES, INC.**, as soon as possible, so that replacement materials may be furnished without delay.

All work must be completed as per Architect's Approved "Shop Drawings", and in accordance with these Installation Instructions. When installation is complete, all materials must be protected from damage until the Architect's **FINAL INSPECTION**.

All materials should be arranged in the order that they are to be installed. All hardware required for each portion of the work should be placed with the appropriate materials.

Please review all Approved Shop Drawings and this document to familiarize yourself with all the details and components of this assembly.

IMPORTANT:

READ THROUGH ALL INSTRUCTIONS PRIOR TO STARTING INSTALLATION

12/27/17



Construction Specialties™

6696 Route 405 Highway, Muncy PA 17756
(800) 233-8493 • Fax (570) 546-5169 • www.CSgroup.com

This document is the property of Construction Specialties, Inc. and contains **CONFIDENTIAL PROPRIETARY INFORMATION** that is not to be disclosed to third parties and is not to be used without approval in writing from Construction Specialties, Inc.

Notes

Before beginning installation, review the architectural drawings and approved Construction Specialties Inc. shop drawings to familiarize yourself with the joint cover models and locations.

Check all of the joint cover components to confirm that the correct joint cover model and size have been received. Also, check for materials that may have been damaged during shipping. Report all incorrect and/or damaged components to CS at 800-233-8493.

Read through all the steps of these instructions prior to beginning work.

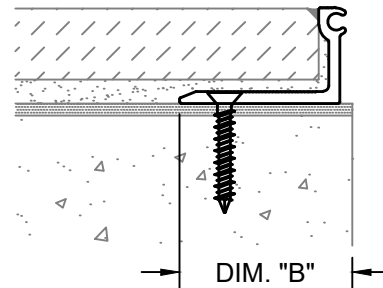
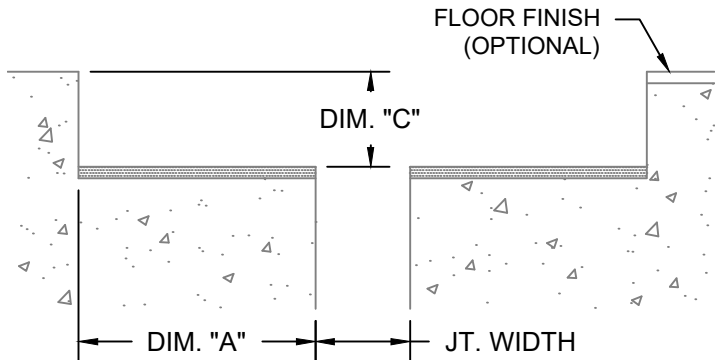
CONTENTS:

I. Floor-to-Floor Joints only Page 2
 II. Floor-to-Wall Joints only Page 4
 III. Joints that transition from Floor-to-Floor to Floor-to-Wall Page 6

STEP 1 - FLOOR TO FLOOR JOINTS ONLY

*Note: The rest of the Assembly is not shown for clarity. System comes fully assembled.

FLOOR TO FLOOR SURFACE PREPARATION



FLOOR TO FLOOR BLOCKOUT OPTION

FLOOR TO FLOOR CONCRETE SLAB OPTION

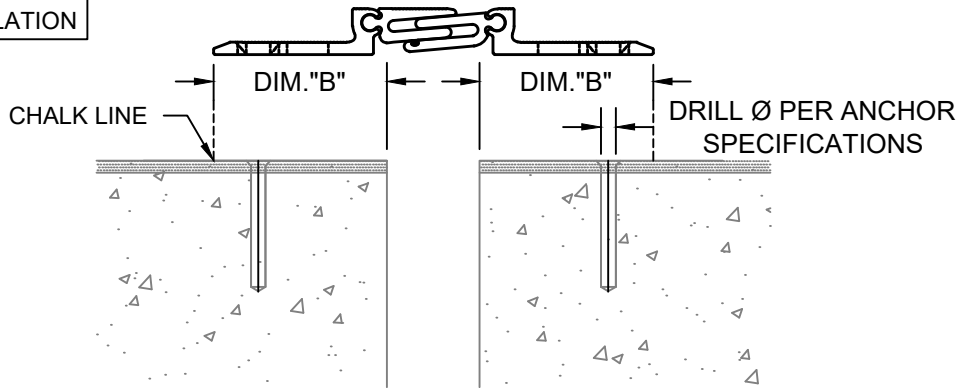
Model	Jt. Width	DIM."A"	DIM."B"	DIM."C"
APF-100 x 1/2"	1"(25.4mm)	2 1/2"(63.50mm)	1 13/16"(46.29mm)	1/2"(12.00mm)
APF-100 x 1"	1"(25.4mm)	2 1/2"(63.50mm)	1 13/16"(46.29mm)	1"(25.40mm)

STEP 1:

- 1.1) The blockouts must be prepared to receive the joint cover.
- 1.2) Refer to table above for minimum blockout width and the blockout depth. The blockout depth may be adjusted as needed to accommodate a floor finish material when required and as indicated on the architectural drawings and/or CS shop drawings.
- 1.3) It is recommended that the blockouts be formed a minimum of 1/8" deeper to allow the blockouts to be leveled for installation of the joint cover.
- 1.4) Apply a high-strength self-leveling grout to the base of the blockouts to provide a continuous, solid, flat and level base for the joint cover. (Note: The blockouts must be level across the width of the joint.)
- 1.5) Mark Frame location, DIM."B", in blockout.
- 1.6) As an alternative surface preparation/Floor Frame Installation Method, an epoxy mortar bed can be spread on the surfaces that are going to be receiving the Assemblies. The epoxy mortar bed should be approximately 5/16" [7.94mm] x DIM. "B" wide on both sides of the joint. The epoxy-mortar can be used to fill in any irregularities on the concrete slab or blockout.
- 1.7) The Assembly should be set in the epoxy mortar bed according to DIM. "B" and tapped down until the top surface is the correct elevation, DIM. "C", before it cures. See next page for Assembly Installation.

STEP 2 - FLOOR TO FLOOR JOINTS ONLY

FLOOR TO FLOOR
ASSEMBLY INSTALLATION



STEP 2:

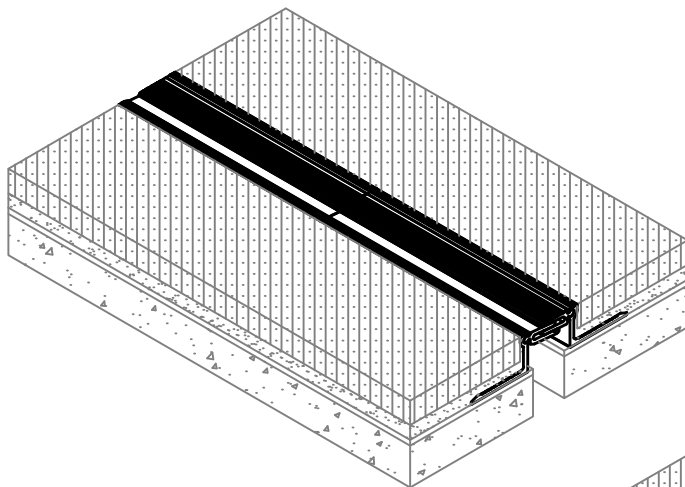
Note:

If a CS Fire Barrier is to be installed in the joint, please review the Fire Barrier Installation Instructions supplied, and if required install the Fire Barrier **BEFORE** installation of CS Seismic Expansion Joint Assemblies. If a Vapor Barrier/Waterstop is to be installed in the joint, please review the Vapor Barrier/Waterstop Installation Instructions supplied, and if required install the Vapor Barrier/Waterstop **BEFORE** installation of CS Seismic Expansion Joint Assemblies.

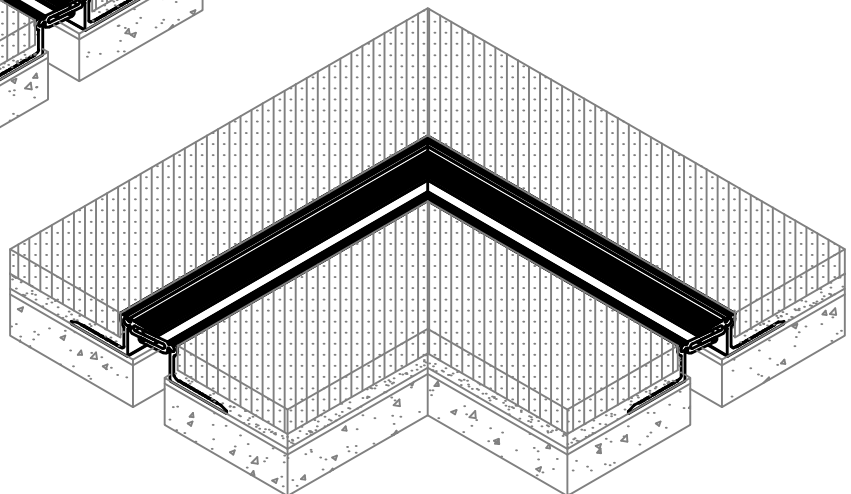
- 2.1) Begin installation of the Floor to Floor Expansion Joint Cover by centering a length of the Assembly over the joint. Cut to the appropriate length if needed.
- 2.2) Reposition the Assembly over the joint and align the edge of the Frames with Frame location mark from Step 1 on Page 2.
- 2.3) Using C'sunk holes in the Frame as a template, mark the locations for the CS supplied anchors.
- 2.4) Remove Assembly and drill holes for CS supplied anchors in accordance to manufacturer's guidelines.
- 2.5) Place Assembly back over joint and attach using the CS supplied anchors per manufacturer's guidelines.

STEP 3 - FLOOR TO FLOOR JOINTS ONLY

TRANSITIONS



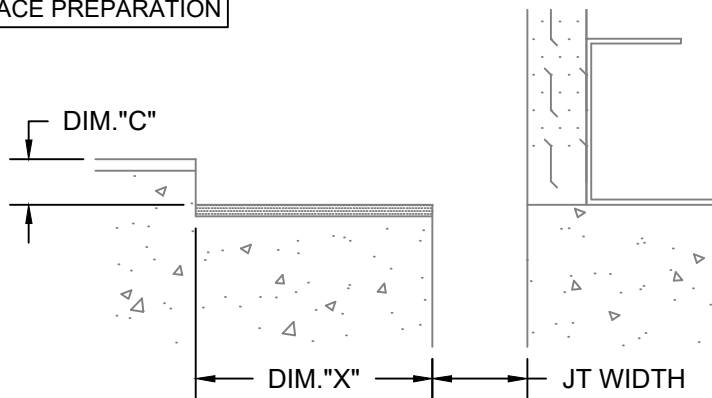
BUTT



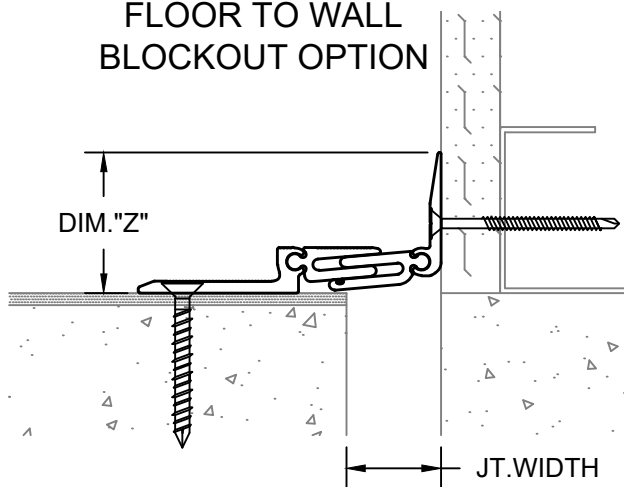
90°

STEP 1 - FLOOR TO WALL JOINTS ONLY

FLOOR TO WALL SURFACE PREPARATION

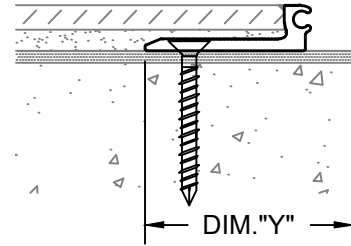


FLOOR TO WALL BLOCKOUT OPTION



FLOOR TO WALL WALL FRAME LOCATION

*Note: The rest of the Assembly is not shown for clarity. System comes fully assembled.



FLOOR TO WALL CONCRETE SLAB OPTION

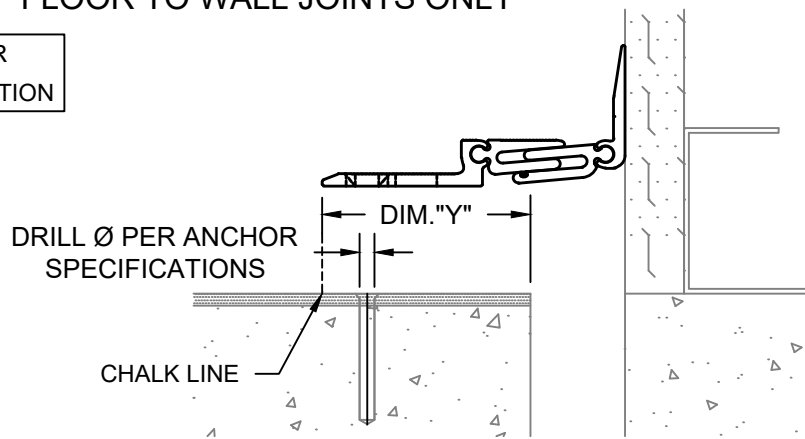
Model	Jt. Width	DIM. "C"	DIM. "X"	DIM. "Y"	DIM. "Z"
APFW-100 x 1/2"	1"(25.4mm)	1/2"(12.00mm)	2 1/2"(63.5mm)	2 3/16"(55.56mm)	1 1/2"(38.10mm)
APFW-100 x 1"	1"(25.40mm)	1"(25.40mm)	2 1/2"(63.5mm)	2 3/16"(55.56mm)	2"(50.80mm)

STEP 1:

- 1.1) The blockout must be prepared to receive the joint cover.
- 1.2) Refer to table above for minimum blockout width and the blockout depth. The blockout depth may be adjusted as needed to accommodate a floor finish material when required and as indicated on the architectural drawings and/or CS shop drawings.
- 1.3) It is recommended that the blockouts be formed a minimum of 1/8" deeper to allow the blockouts to be leveled for installation of the joint cover.
- 1.4) Apply a high-strength self-leveling grout to the base of the blockouts to provide a continuous, solid, flat and level base for the joint cover. (Note: The blockouts must be level across the width of the joint.)
- 1.5) Mark Frame and Wall Frame locations, DIM."Y" and DIM."Z", in blockout.
- 1.6) As an alternative surface preparation/Floor Frame Installation Method, an epoxy mortar bed can be spread on the surfaces that are going to be receiving the Floor Frame Assemblies. The epoxy mortar bed should be approximately 5/16" [7.94mm] x DIM. "B" wide on both sides of the joint. The epoxy-mortar can be used to fill in any irregularities on the concrete slab.
- 1.7) The Assembly should be set in the epoxy mortar bed according to DIM."Y" and tapped down until the top surface is the correct elevation, DIM."C", before it cures. See next page for Assembly Installation.

STEP 2 - FLOOR TO WALL JOINTS ONLY

FLOOR TO FLOOR
ASSEMBLY INSTALLATION



STEP 2:

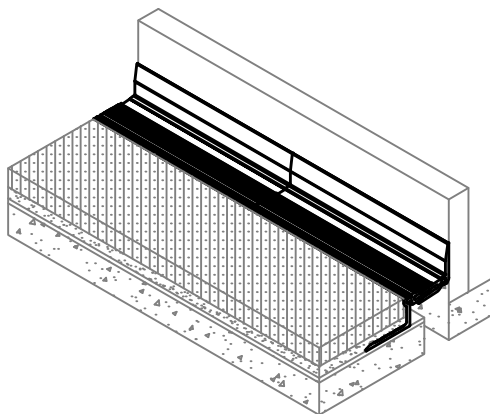
Note:

If a CS Fire Barrier is to be installed in the joint, please review the Fire Barrier Installation Instructions supplied, and if required install the Fire Barrier **BEFORE** installation of CS Seismic Expansion Joint Assemblies. If a Vapor Barrier/Waterstop is to be installed in the joint, please review the Vapor Barrier/Waterstop Installation Instructions supplied, and if required install the Vapor Barrier/Waterstop **BEFORE** installation of CS Seismic Expansion Joint Assemblies.

- 2.1) Begin installation of the Floor to Floor Expansion Joint Cover by centering a length of the Assembly over the joint. Cut to the appropriate length if needed.
- 2.2) Reposition the Assembly over the joint and align the edge of the Frame with Frame location mark from Step 1 on Page 2.
- 2.3) Wall Frame should be DIM."Z" from bottom of blockout (See Page 4; Step 1).
- 2.4) Using C'sunk holes in the Frames as a template, mark the locations for the CS supplied anchors.
- 2.5) Remove Assembly and drill holes for CS supplied anchors in accordance to manufacturer's guidelines.
- 2.6) Place Assembly back over joint and attach using the CS supplied anchors per manufacturer's guidelines.

STEP 3 - FLOOR TO WALL JOINTS ONLY

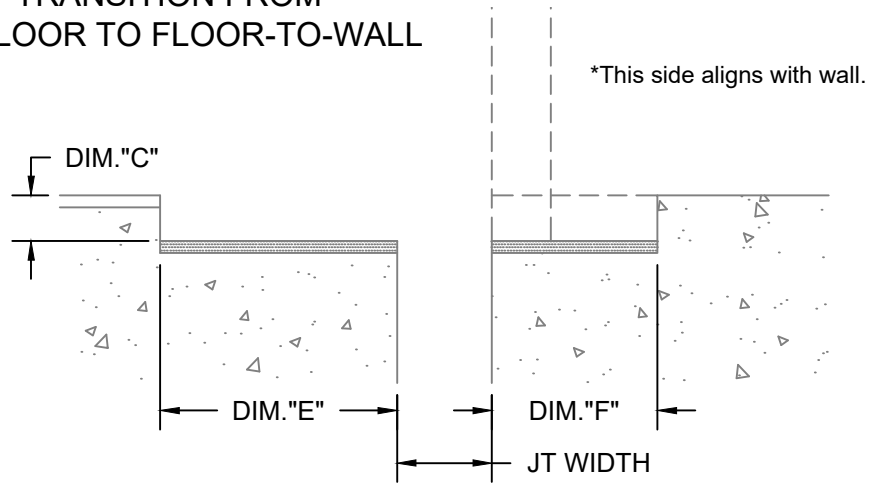
TRANSITIONS



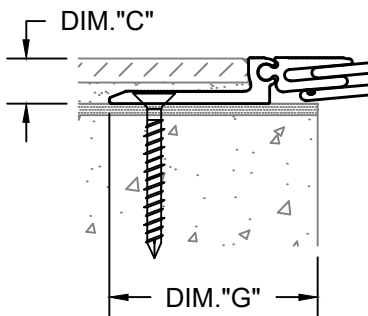
FLR-WALL BUTT

STEP 1 - JOINTS THAT TRANSITION FROM FLOOR-TO-FLOOR TO FLOOR-TO-WALL

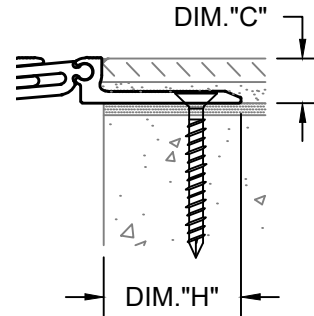
FLOOR TO FLOOR THAT WILL TRANSITION TO FLOOR TO WALL SURFACE PREPARATION



FLOOR TO FLOOR OFFSETTED BLOCKOUT OPTION



FLOOR TO FLOOR OFFSETTED FRAME OPPOSITE TO WALL CONCRETE SLAB OPTION



FLOOR TO FLOOR OFFSETTED FRAME SAME SIDE AS WALL CONCRETE SLAB OPTION

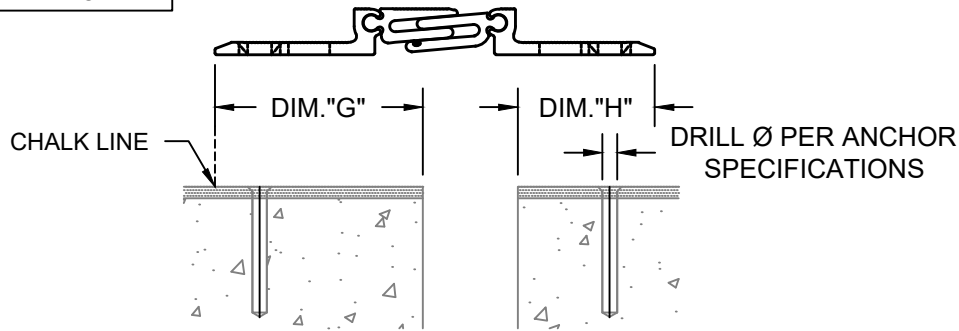
Model	Jt. Width	DIM. "C"	DIM. "E"	DIM. "F"	DIM."G"	DIM. "H"
APFW-100 x 1/2"	1"(25.4mm)	1/2"(12.0mm)	2 1/2"(63.5mm)	1 3/4"(44.45mm)	2 3/16"(55.8mm)	1 7/16"(36.7mm)
APFW-100 x 1"	1"(25.4mm)	1"(25.4mm)	2 1/2"(63.5mm)	1 3/4"(44.45mm)	2 3/16"(55.8mm)	1 7/16"(36.7mm)

STEP 1:

- 1.1) The blockouts must be prepared to receive the joint cover.
- 1.2) Refer to table above for minimum blockout width and the blockout depth. Note: Floor to floor blockout on the opposite side as Wall Frame is wider (see details above). The blockout depth may be adjusted as needed to accommodate a floor finish material when required and as indicated on the architectural drawings and/or CS shop drawings.
- 1.3) It is recommended that the blockouts be formed a minimum of 1/8" deeper to allow the blockouts to be leveled for installation of the joint cover.
- 1.4) Apply a high-strength self-leveling grout to the base of the blockouts to provide a continuous, solid, flat and level base for the joint cover. (Note: The blockouts must be level across the width of the joint.)
- 1.5) Mark Frame locations, DIM."G" and "H", in blockout. Note: DIM."G" will align with the Frame from the Floor to Wall assembly that is opposite of the Wall.
- 1.6) As an alternative surface preparation/Floor Frame Installation Method, an epoxy mortar bed can be spread on the surfaces that are going to be receiving the Floor Frame Assemblies. The epoxy mortar bed should be approximately 5/16" [7.94mm] x DIM. "B" wide on both sides of the joint. The epoxy-mortar can be used to fill in any irregularities on the concrete slab.
- 1.7) The Assembly should be set in the epoxy mortar bed according to DIM."G" and "H" and tapped down until the top surface is the correct elevation, DIM."C", before it cures. See next page for Assembly Installation.

STEP 2 - JOINTS THAT TRANSITION FROM FLOOR-TO-FLOOR TO FLOOR-TO-WALL

FLOOR TO FLOOR THAT WILL TRANSITION TO FLOOR TO WALL SURFACE PREPARATION



STEP 2:

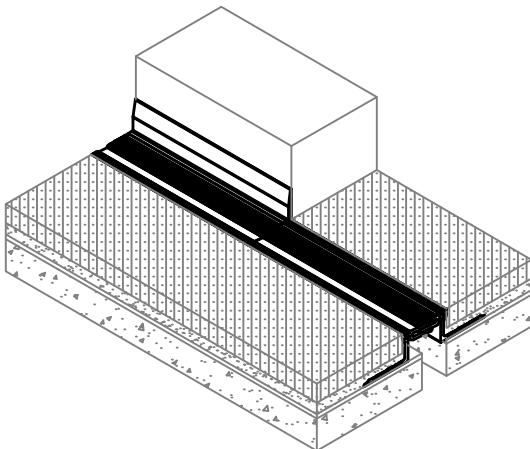
Note:

If a CS Fire Barrier is to be installed in the joint, please review the Fire Barrier Installation Instructions supplied, and if required install the Fire Barrier **BEFORE** installation of CS Seismic Expansion Joint Assemblies. If a Vapor Barrier/Waterstop is to be installed in the joint, please review the Vapor Barrier/Waterstop Installation Instructions supplied, and if required install the Vapor Barrier/Waterstop **BEFORE** installation of CS Seismic Expansion Joint Assemblies.

- 2.1) Begin installation of the Floor to Floor Expansion Joint Cover by centering a length of the Assembly over the joint. Cut to the appropriate length if needed.
- 2.2) Reposition the Assembly over the joint and align the edge of the Frame with Frame location mark from Step 1 on Page 2.
- 2.3) Wall Frame should be DIM."Z" from bottom of blockout (See Page 4; Step 1).
- 2.4) Using C'sunk holes in the Frames as a template, mark the locations for the CS supplied anchors.
- 2.5) Remove Assembly and drill holes for CS supplied anchors in accordance to manufacturer's guidelines.
- 2.6) Place Assembly back over joint and attach using the CS supplied anchors per manufacturer's guidelines.

STEP 3 - JOINTS THAT TRANSITION FROM FLOOR-TO-FLOOR TO FLOOR-TO-WALL

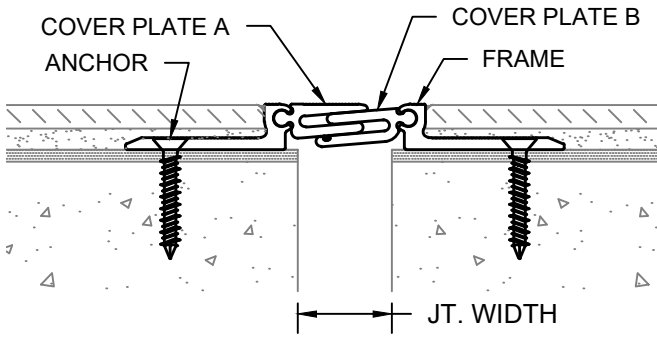
TRANSITIONS



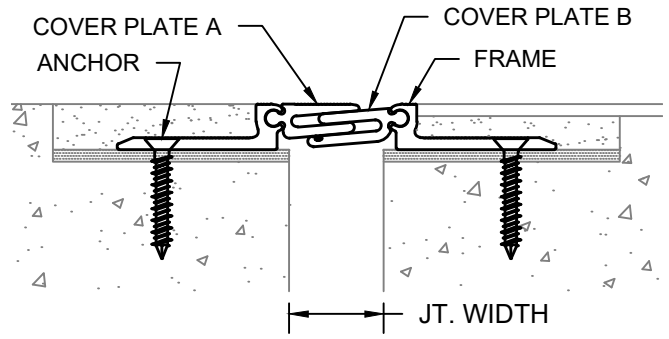
FLR-FLR TO FLR-WALL

STEP 4

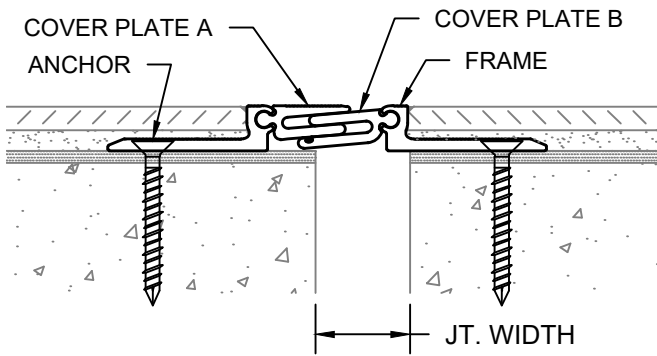
COMPLETE INSTALLATION



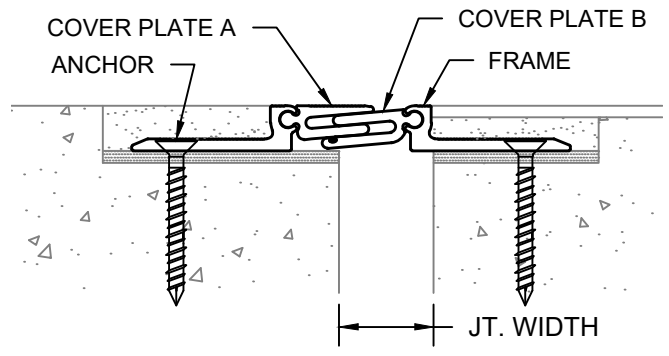
FLOOR TO FLOOR
CONCRETE SLAB OPTION



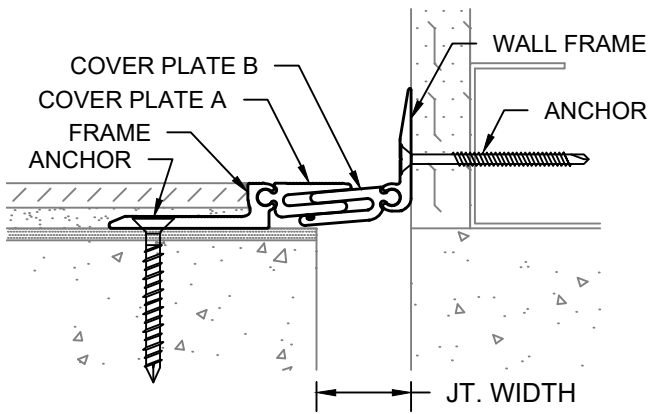
FLOOR TO FLOOR
BLOCKOUT OPTION



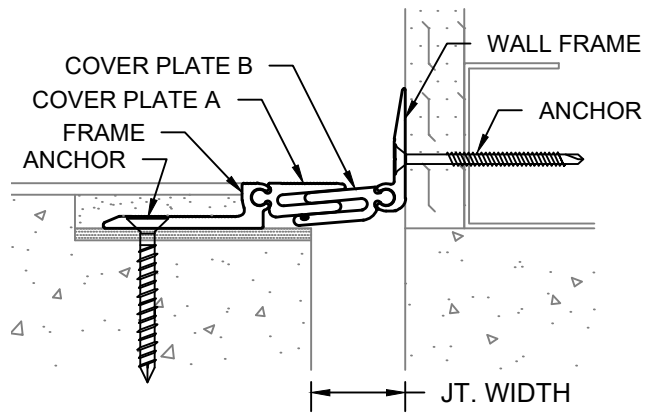
FLR-FLR TO FLR-WALL
CONCRETE SLAB OPTION



FLR-FLR TO FLR-WALL
BLOCKOUT OPTION



FLOOR TO WALL
CONCRETE SLAB OPTION



FLOOR TO WALL
BLOCKOUT OPTION

STEP 4:

- 4.1) Once all sections of Expansion Joint Cover have been installed, apply a high strength, non-shrink grout into the blockout covering all fasteners as shown above. Either fill flush with top of Frames or Floor Finish (see details above). Repeat this step on the opposite side of the joint.
- 4.2) When installation of the CS Floor Expansion Joint Cover has been completed remove the protective film from the Assemblies, remove all residue and foreign matter from the area and joint cover.
- 4.3) Clean the CS Joint Cover and adjoining surfaces with proper cleaner.
- 4.4) Protect the Joint Cover until the Architect's final inspection.