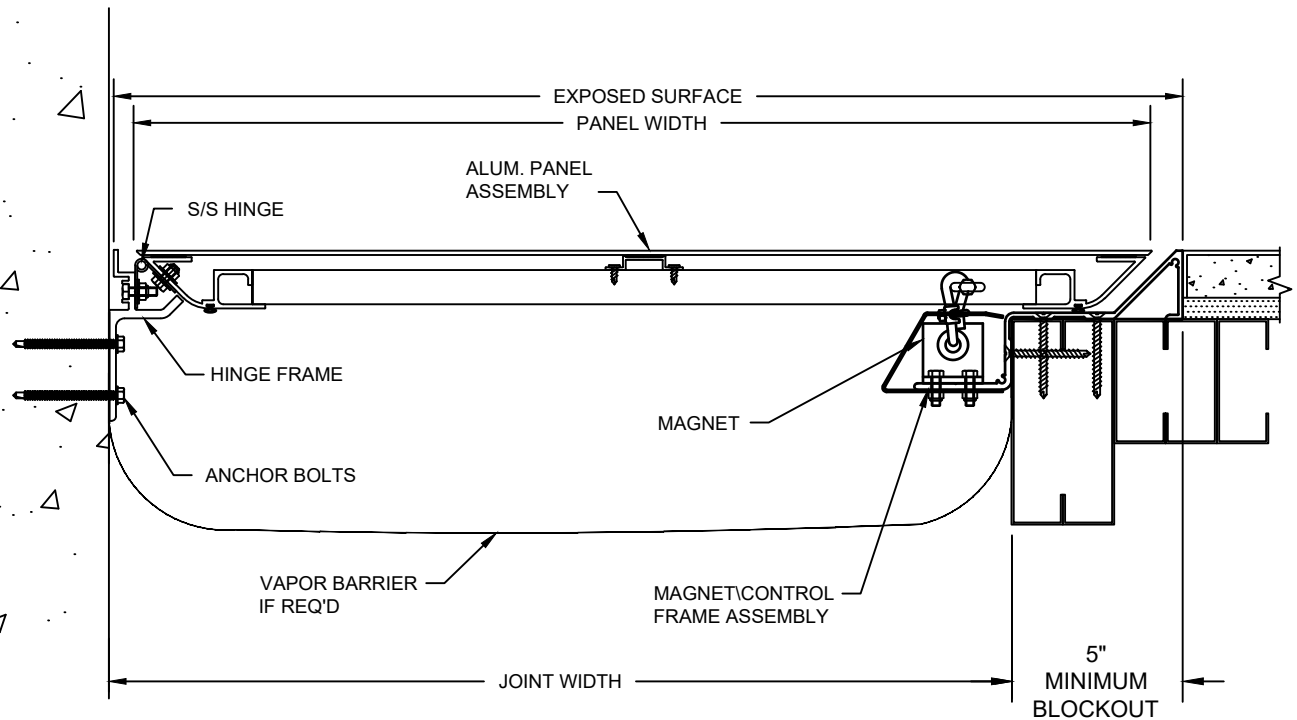


MODEL XLPC INSTALLATION INSTRUCTIONS



IMPORTANT INFORMATION

Prior to the commencement of Installation all materials **MUST** be inspected for Damage. Any damage must be reported to Construction Specialties as soon as possible, so that replacement materials may be furnished without delay.

All work must be completed as per Architect's Approved "Shop Drawings", and in accordance with these Installation Instructions. When installation is complete, all materials must be protected from damage until the Architect's FINAL INSPECTION.

All materials should be arranged in the order that they are to be installed. All hardware required for each portion of the work should be placed with the appropriate materials.

Please review all Approved Shop Drawings and this Document to familiarize yourself with all the details and components of this assembly.

IMPORTANT:
READ THROUGH ALL INSTRUCTIONS PRIOR TO STARTING INSTALLATION

5/21/26



Construction Specialties™

6696 Route 405 Highway, Muncy
 PA 00728-8493 Fax (570) 546-5169
 www.csgroup.com

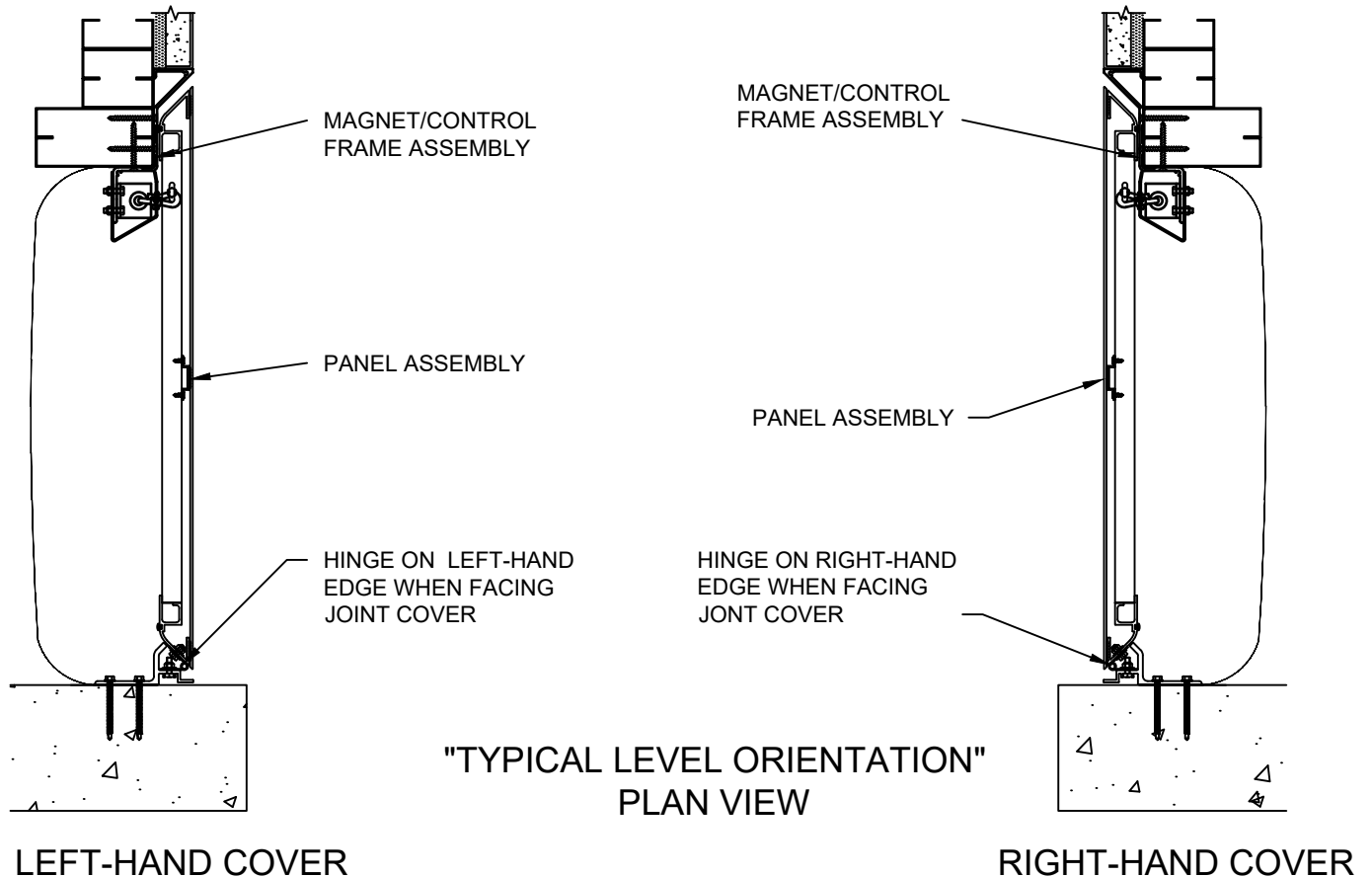
This document is the property of Construction Specialties, Inc. and contains CONFIDENTIAL PROPRIETARY INFORMATION that is not to be disclosed to third parties and is not to be used without approval in writing from Construction Specialties, Inc.

GENERAL NOTES

Before beginning installation, review the architectural drawings and approved Construction Specialties Inc. shop drawings to familiarize yourself with the joint cover models and locations.

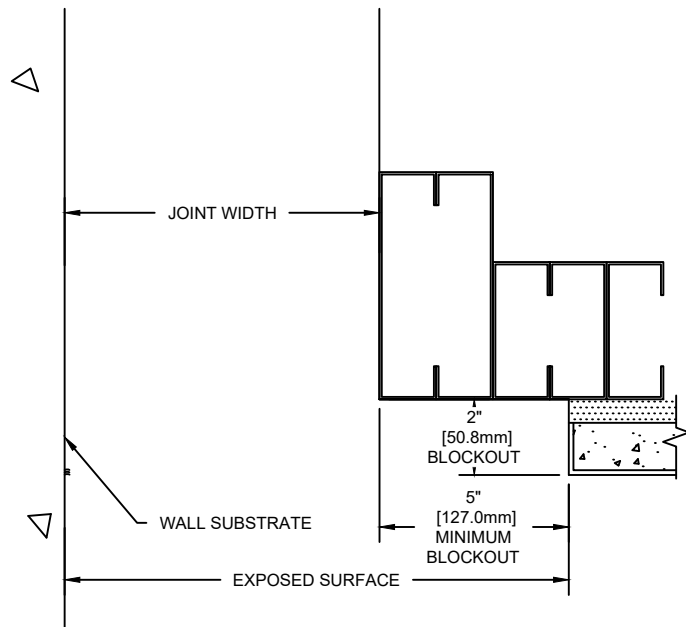
Check all of the joint cover components to confirm that the correct joint cover model and size have been received. Also, check for materials that may have been damaged during shipping. Report all incorrect and/or damaged components to C/S at 1-800-233-8493.

Read through all the steps of these instructions prior to beginning work.

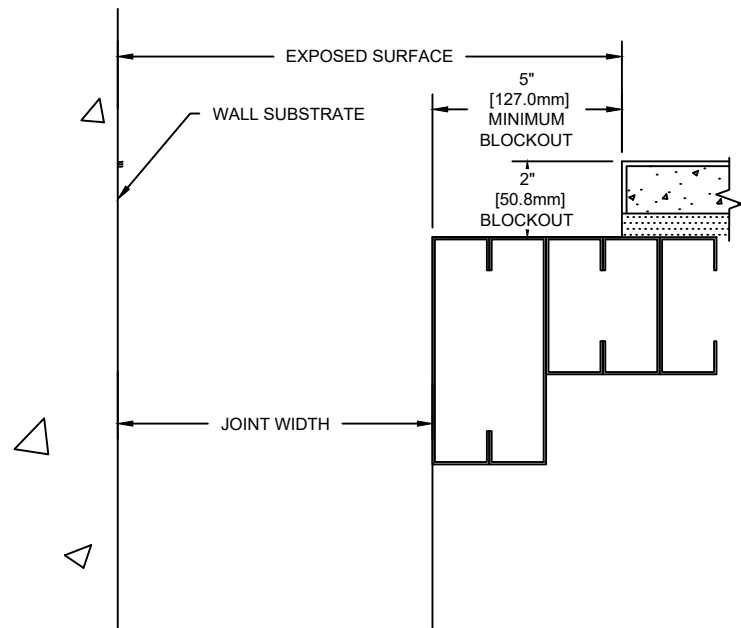


- 1) References may be made throughout these instructions to locations of right-hand cover and left-hand cover type. Refer to this detail to distinguish right-hand cover or left-hand cover for the location in reference.
- 2) Right-hand and left-hand is based on the typical architectural and shop drawing plan and elevation view drawings. Right-hand or left-hand is always determined the hinge location when facing the joint or joint cover.
- 3) For proper alignment, appearance and function of the XLPC joint cover system, it is important that all components are installed plumb, level and square.
- 4) The XLPC covers are supplied in units with frame and panel coordinated assemblies for proper function of the joint cover. Maintain coordination of matched components during installation.

GENERAL NOTES (CONT.)



TYPICAL "LEFT-HAND"
WALL CONDITION FOR
XLPC COVER



TYPICAL "RIGHT-HAND"
WALL CONDITION FOR
XLPC COVER

Notes (Cont.)

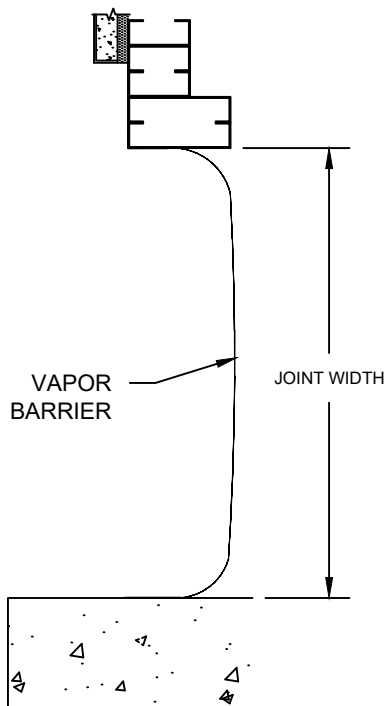
- 4) The "XLPC" joint covers must be securely mounted to a structurally sound wall. Repair all damage to the blockouts or wall construction prior to beginning installation.
- 5) The blockouts in which the covers are to be mounted must be flat, level and parallel. The base of the blockout must be flat (along the length of the joint) to within $\pm 1/16$ " [1.6mm] and level (across the joint) to within $\pm 1/16$ " [1.6mm].
- 6) The block out width shown on the Construction Specialties shop drawings is a minimum width dimension. The blockout may be made wider to allow for greater installation tolerance.
- 7) The surface of the blockouts must be clean and free from any loose dust, dirt, debris and oils that would affect the installation of the covers.
- 8) It is possible that the expansion/seismic joint may have experienced some amount of movement at the time of installation. For proper installation of the "XLPC" covers, the joint width must be within $\pm 1/4$ " [6.4mm] of nominal. If the joint width at the time of installation is not within this tolerance, please contact the factory as some adjustments to the key installation dimensions may be required. These instructions assume that the nominal joint is within tolerance.
- 9) Coordinate installation of cover with installation of fire barrier systems when required.

STEP 1

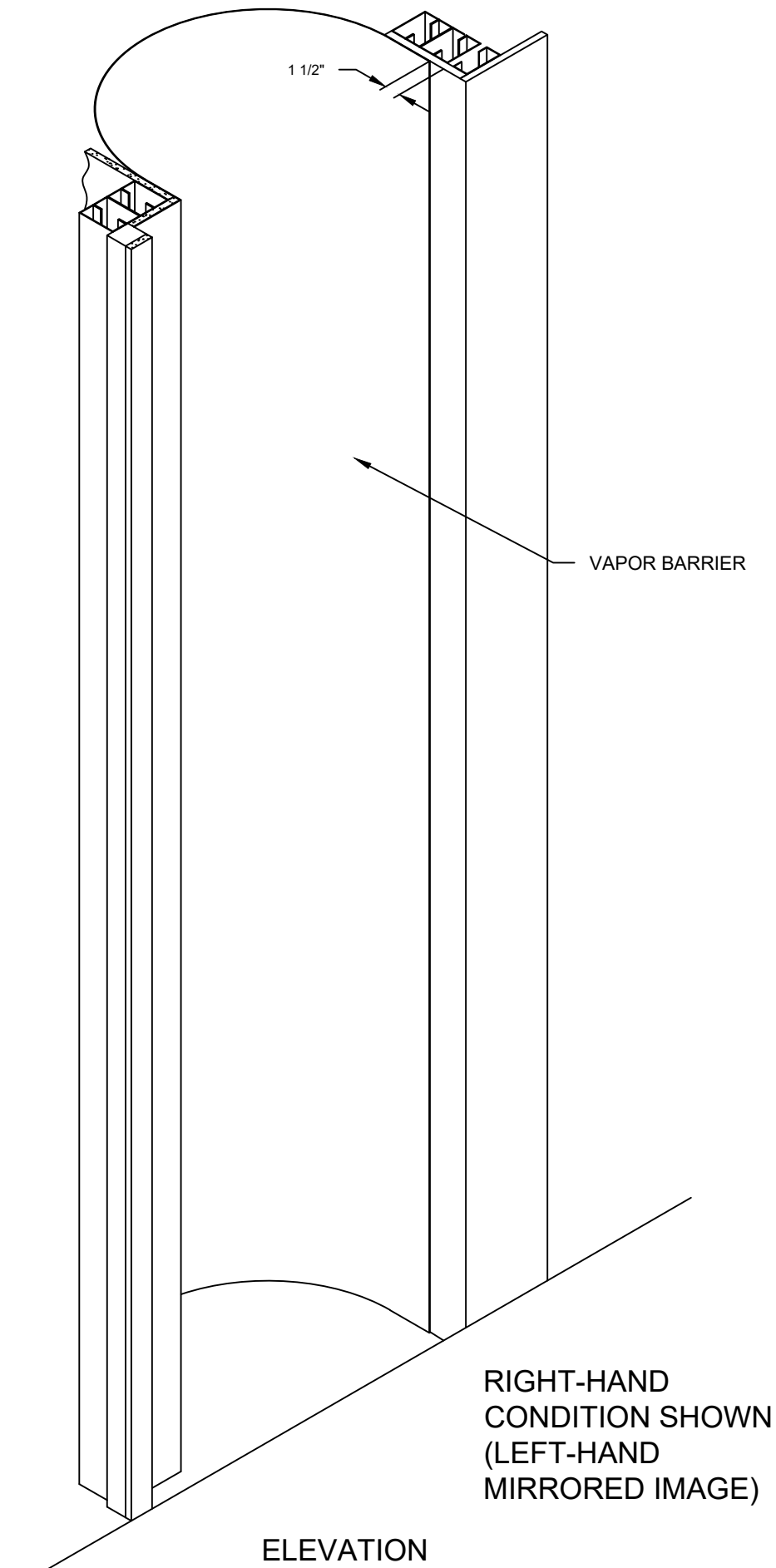
VAPOR BARRIER INSTALLATION

- 1.1) Locate the required Polyethylene Vapor Barrier for this location. Measure and cut a length of Vapor barrier for the full run. Allow extra length at top and bottom for transition and adjustment.
- 1.2) Beginning at the top end of the run, drape the barrier down the joint and position it at the joint as indicated.
- 1.3) Use clamps, duct tape or pins to temporarily hold the Vapor barrier until frame installation.

Note: If a splice or base closure is required, refer to Installation Instruction sheet 12AX.



SECTION



ELEVATION

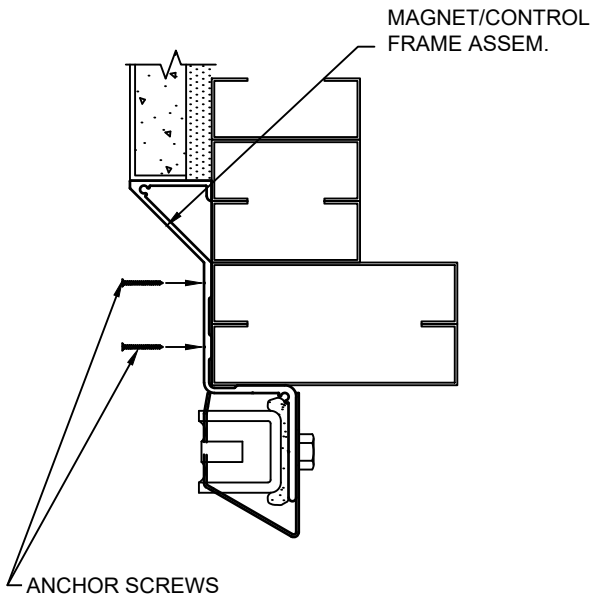
STEP 2

MAGNET CONTROL FRAME INSTALLATION

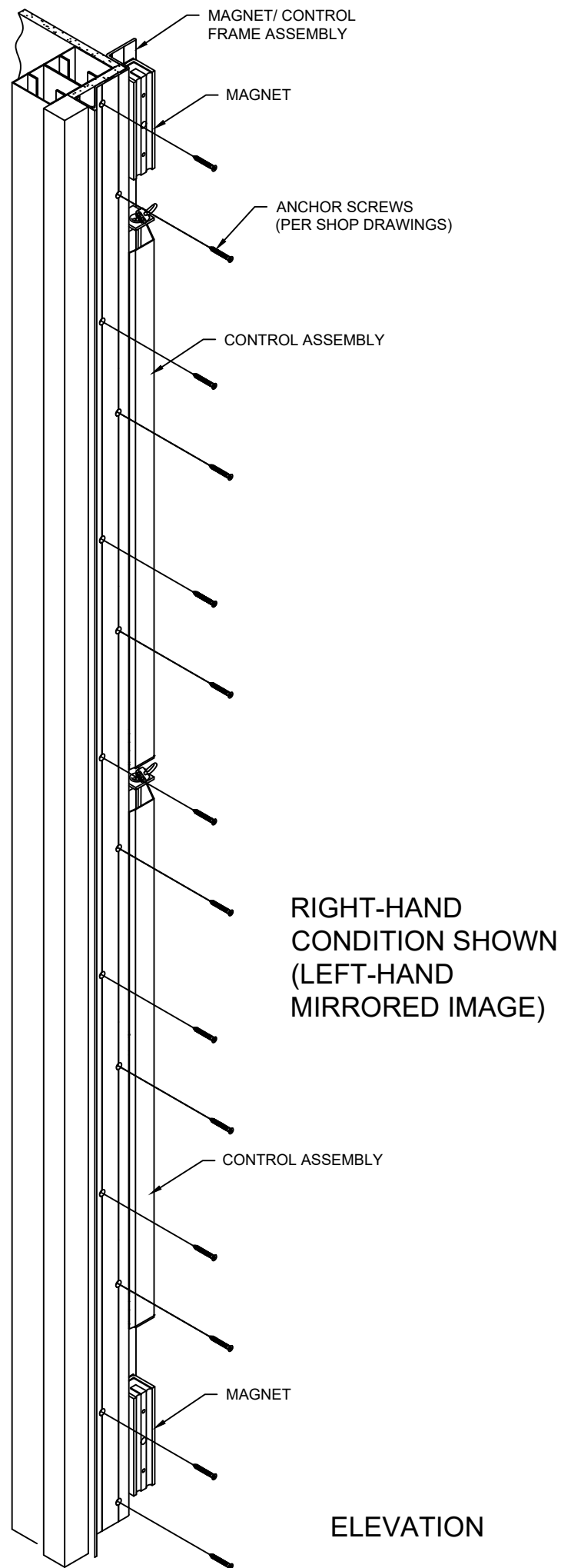
2.1) Beginning at the bottom of the run, Locate the appropriate cover unit for this location. Place the Magnet/ Control Frame Assembly into the blockout of the wall. Align the bottom edge with the wall. Once the assembly is correctly positioned and it is plumb and square, secure the top and bottom of the Frame using the C/S supplied anchor screws.

2.2) Continue with the installation of the remaining fasteners in the front flange.

Note: Do not remove the cardboard from the two magnets. The cardboard prevents accidental latching.



SECTION



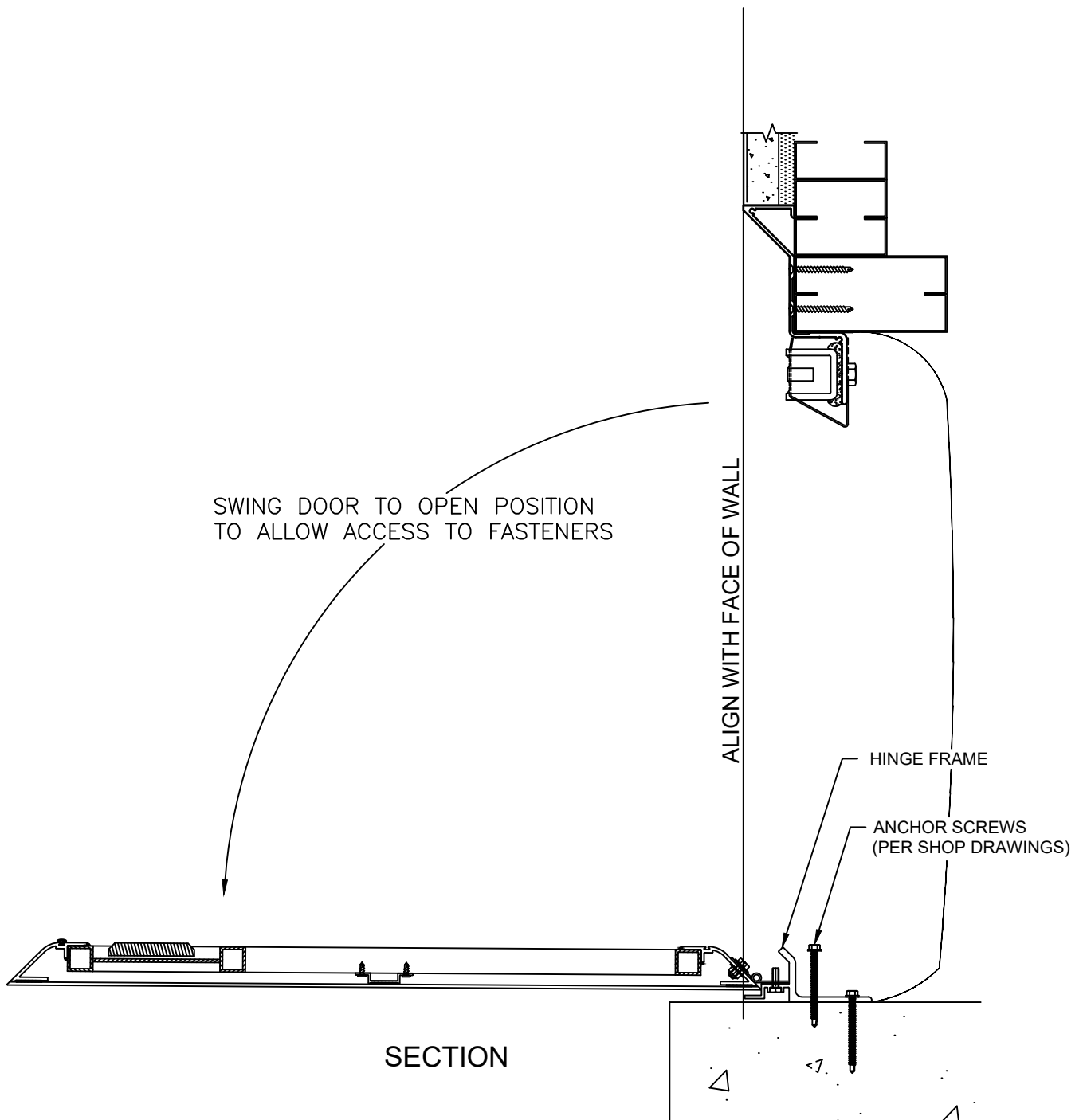
ELEVATION

STEP 3

HINGE FRAME / ALUM. PANEL ASSEMBLY INSTALLATION

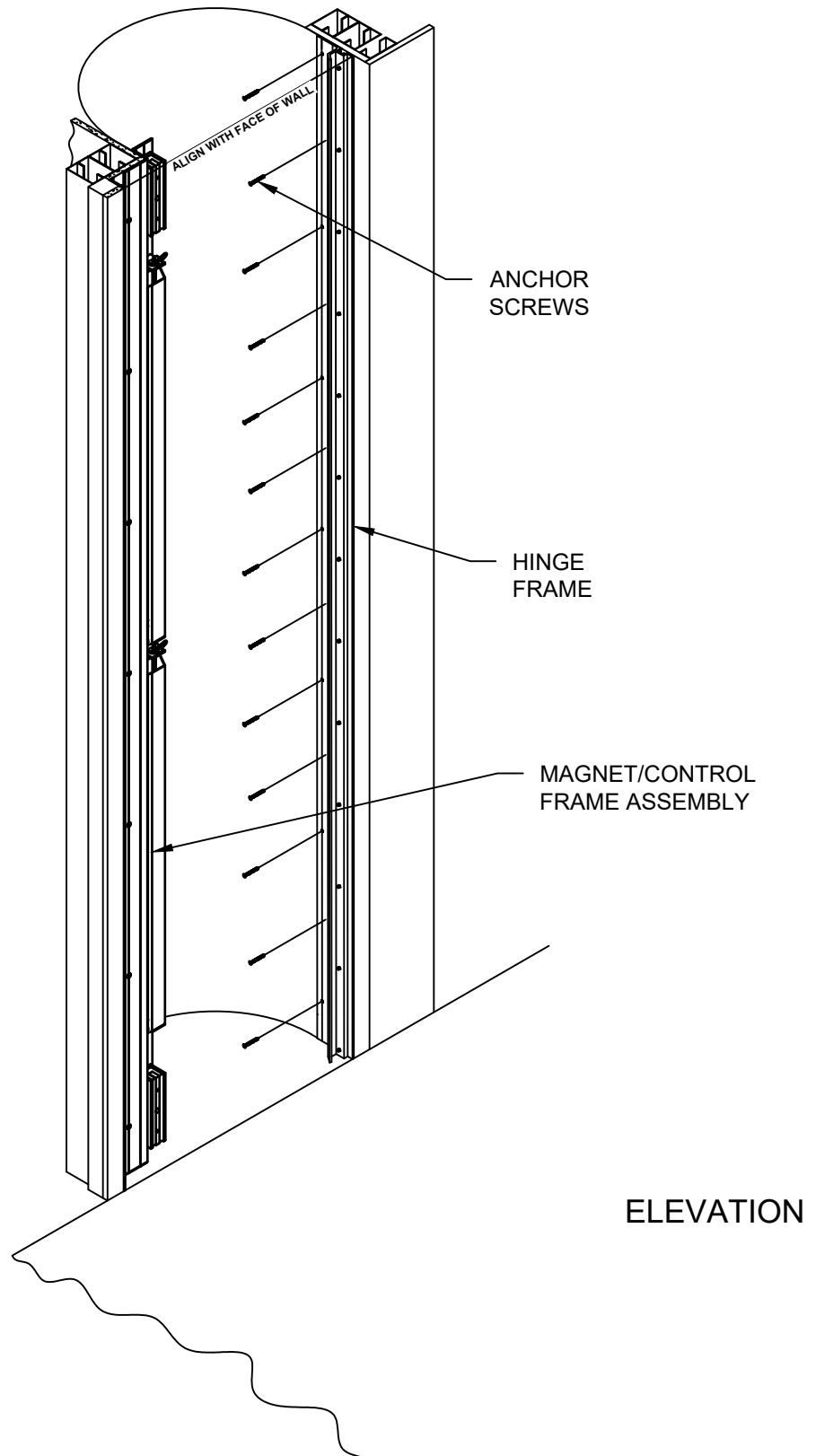
Note: Care must be taken in the handling of the Panel Assembly during installation to avoid damage to the finished surfaces.

- 3.1) Position the Hinge Frame Panel Assembly onto the opposite wall. Position so that the inside surface is aligned with the face of the wall and opposite wall as shown, plumb and parallel to the Magnet/Control Frame assembly.
- 3.2) Hold the door in the open position while securing the Hinge Frame Panel assembly to the wall substrate with the C/S supplied anchor screws (reference C/S shop drawings) at each anchor hole. The fastener locations are staggered 9" on center.



STEP 3 (con't)

HINGE FRAME / ALUM. PANEL ASSEMBLY INSTALLATION



STEP 4

ATTACH PANEL CONTROL CORD

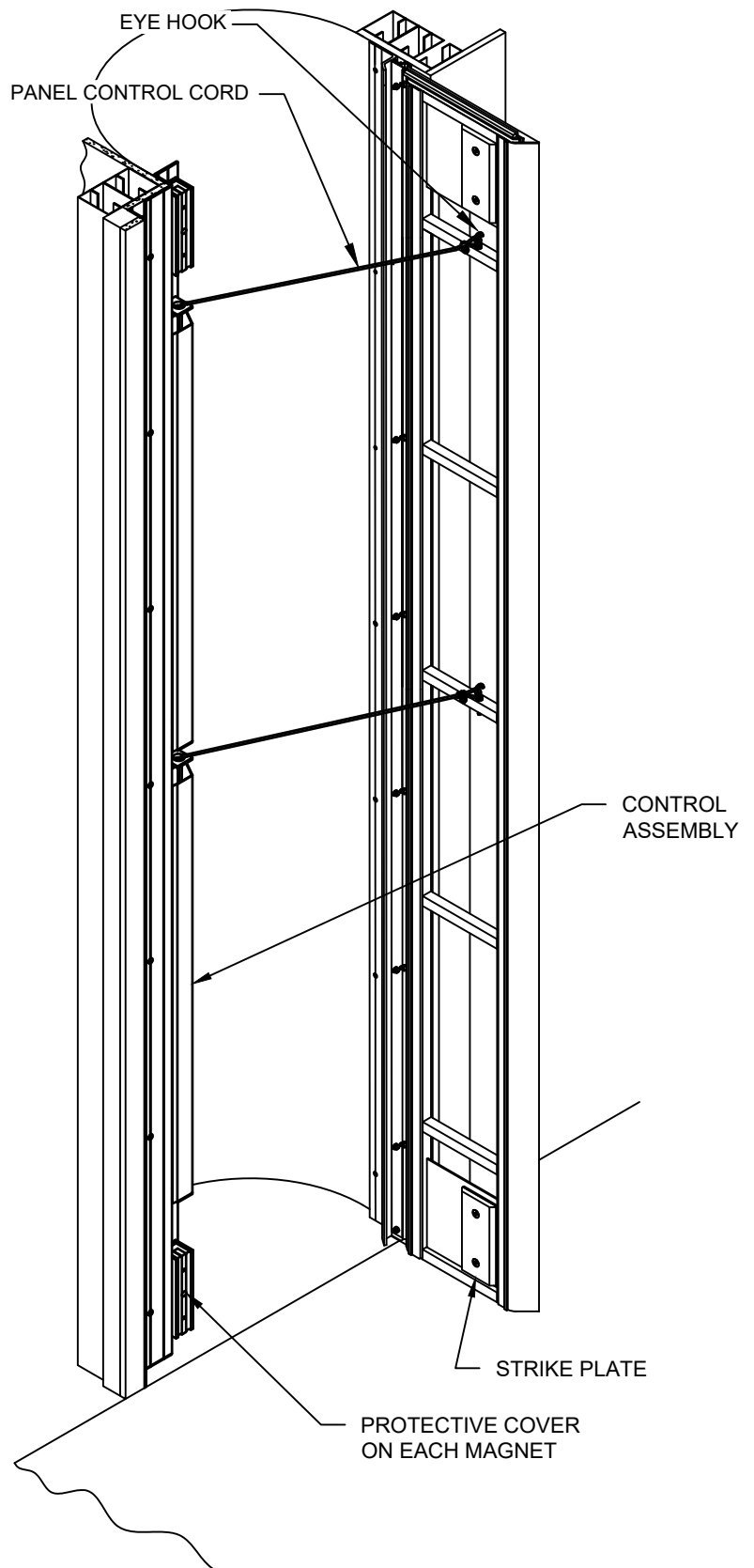
With the Hinge Frame Panel Assembly attached the following steps will complete installation of this unit.

Note: Each XLPC assembly contains two magnets. The magnets are located at the top and bottom of the Control Frame. For shipment each Magnet is protected with a piece of cardboard. This cardboard cover also prevents accidental latching of the Strike Plate to the Magnets. **Note: Do not remove the cardboard and do not allow the Panel Assembly to close on the magnets at this time. Each magnet has a pull force of 400 lbs. Removing the cardboard at this point could cause injury and/or may require prying to reopen the cover.**

4.1) At the top of each Control Assembly there will be a looped cord on top of the Control Angle. Place the loops on the end of the Panel Control Cord over the eyebolts on the backside of the Panel Assembly.

4.2) While holding onto the Panel Assembly, remove the clamps from on the Control Cord and allow the Panel to close slowly against the Control Frame and cardboard covered magnets.

Installation of this unit is complete. The Magnet Covers should not be removed until installation of all units for this location are complete.



ELEVATION

STEP 5

INSTALL ADDITIONAL LENGTHS/UNITS

Note: Reference the details at right for Magnet/control and alignment and condition at typical Panel Assembly joints.

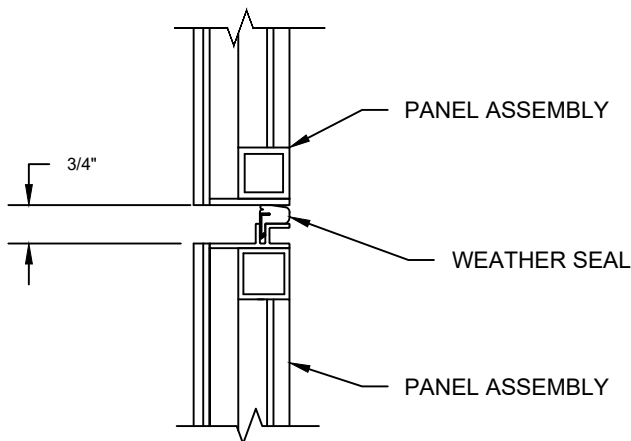
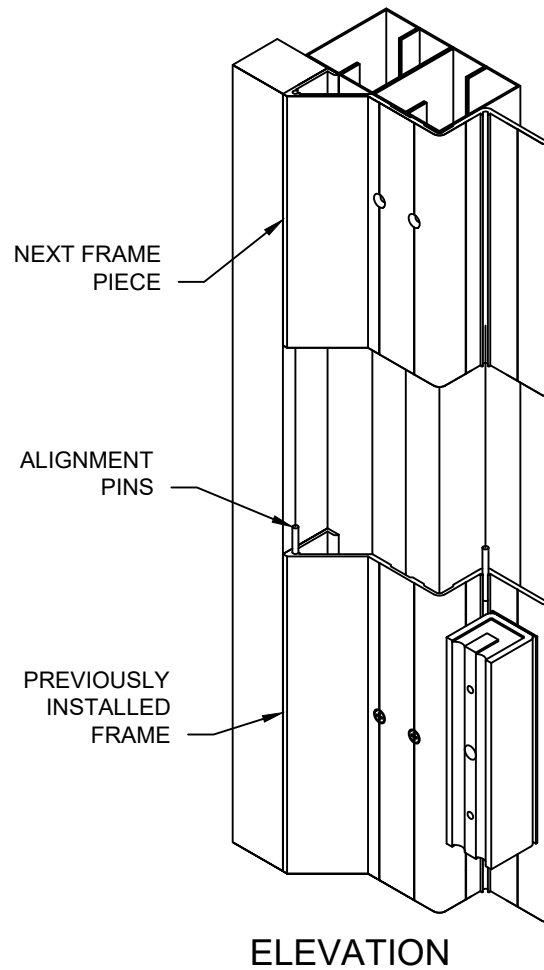
Continue installation of the remaining XLP covers following the steps below:

5.1) Insert alignment pins into the top of the Magnet Control Frame Assembly. Continue installation of the remaining XLP covers following steps 1 through 4.

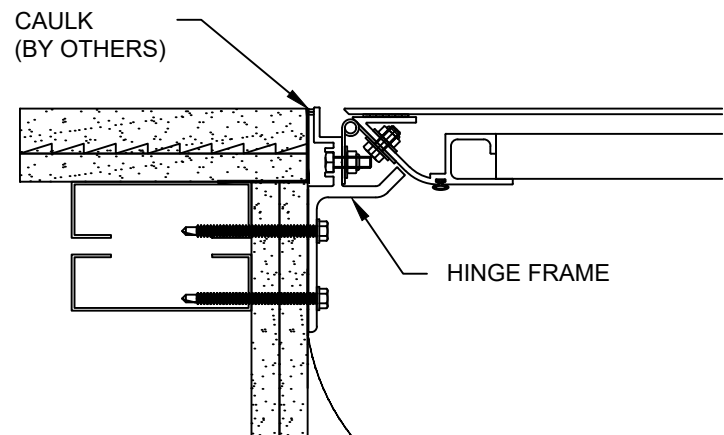
5.3) After all units have been installed for the full height and no further work is required inside the joint, remove the cardboard covers from the magnet and carefully allow the Panel to close onto the Magnets. The Panels should latch securely.

5.4) With the door in the closed position, apply a small bead of silicone caulking (by others) between the Hinge Frame and the wall. (See detail).

Installation is complete.



TYPICAL REVEAL



SECTION