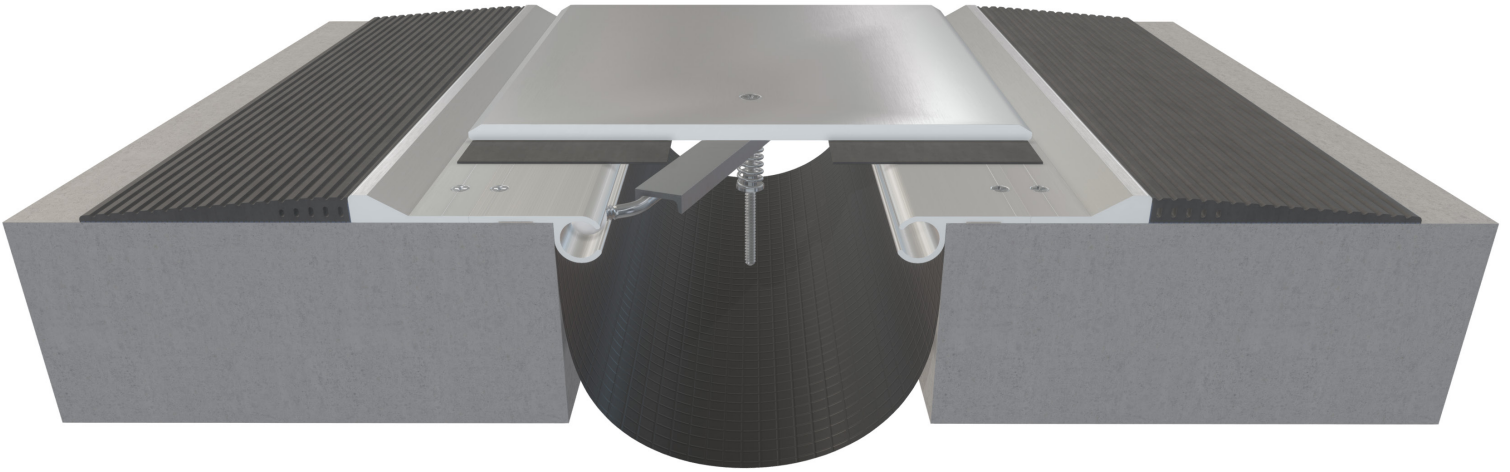


## SMP Series



Model SMP

This surface mounted system is specifically designed for parking structure applications and other areas with vehicular access. This model features extruded ADA compliant EPDM elastomeric side nosing and can accommodate both seismic and live load movements.

### Advantages

- ADA compliant wings are smooth and quiet
- Great for parking or traffic grade applications
- Vapor barrier included



[View 3D Model](#) →

# SMP Series

## Product Details

- Joint sizes range from 5" – 24" (127mm to 609.6mm)
- Vapor barrier standard
- 10' (3.05m) stock lengths
- Meets ASTM E1399

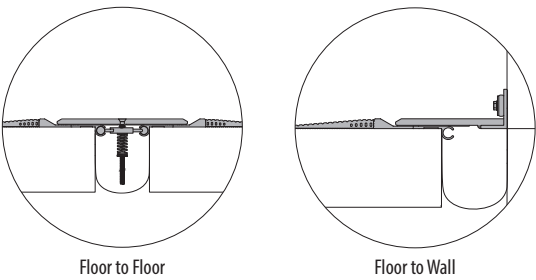


## Finish Color



Aluminum in contact with concrete/masonry will have a 2 mil heavy metal free high solids primer

## Model Details



MODEL	FLOOR TO FLOOR	FLOOR TO WALL
SMP	●	
SMPW		●

## Warranty

- Standard Five-Year Warranty



Learn More

