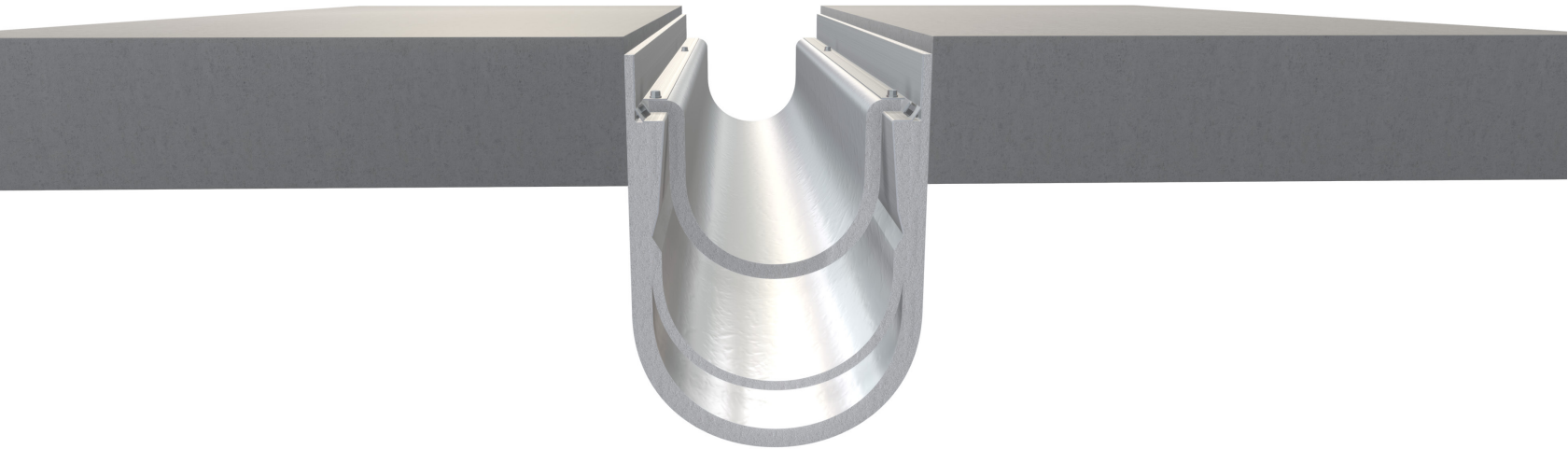


FB-17 Series



Model FB-17

This blanket type fire barrier is designed for 9" - 30" (maximum open) floor and wall expansion joints. FB-17 not only minimizes smoke passage and accommodates dynamic movement without degradation of material, it has been tested and proven to provide 2-hour and 3-hour floor and wall fire endurance ratings.

Advantages

- Tested and listed by a third party for 2 and 3 hour floor and wall applications
- Minimizes smoke passage
- Accommodates dynamic movement
- Simple splicing
- Multiple flanges available for varying field conditions
- Option for lateral shear movement is available
- Undermount floor application available



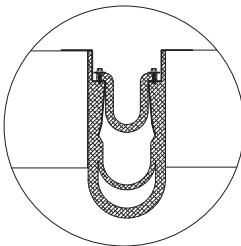
[View 3D Model](#) →

FB-17 Series

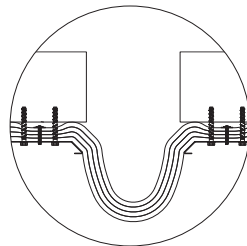
Product Details

- For 5" - 20" (127mm - 508mm) nominal floor and wall joints
- 9" (228.6mm) - 30" (762mm) maximum open
- 10' (304.8cm) stock lengths

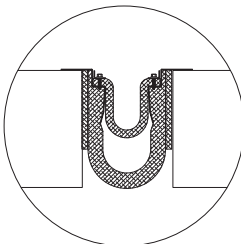
Model Details



FB-17
Floor to Floor



FB-17UM
Floor to Floor



FB-17
Wall to Wall

Certifications

- Performance Standards: UL-2079, ASTM E-1966, ASTM E1399
- Code Compliance: UBC, SBC, BOCA, IBC

RATING	MAX OPEN	APPLICATION	FB-17 LISTING NUMBER
2HR	9" - 30"	Floor or Lateral Floor	CSI/EJCA-120-01
		Gypsum/CMU Wall	CSI/EJCA-120-02
	9"	Undermount Floor	FF-D-1223
		Undermount Lateral Floor	FF-D-1224
	12" - 18"	Undermount Floor	FF-D-2028
		Undermount Lateral Floor	FF-D-2029
21" - 30"	Undermount Floor	FF-D-3021	
	Undermount Lateral Floor	FF-D-3022	
3HR	9" - 30"	Floor or Lateral Floor	CSI/EJCA-180-01
		CMU Wall	WW-D-2034
	9" - 18"	Gypsum Wall	WW-D-2032
		21" - 30"	CMU Wall
Gypsum Wall	WW-D-3029		

Warranty

- Standard Five-Year Warranty

Note

For wall fire barrier system to perform properly in terms of fire rating and movement capability, it is important that you provide adequate wall construction depth for installation. For more information see [Wall Depth Calculator](#).



Learn More →