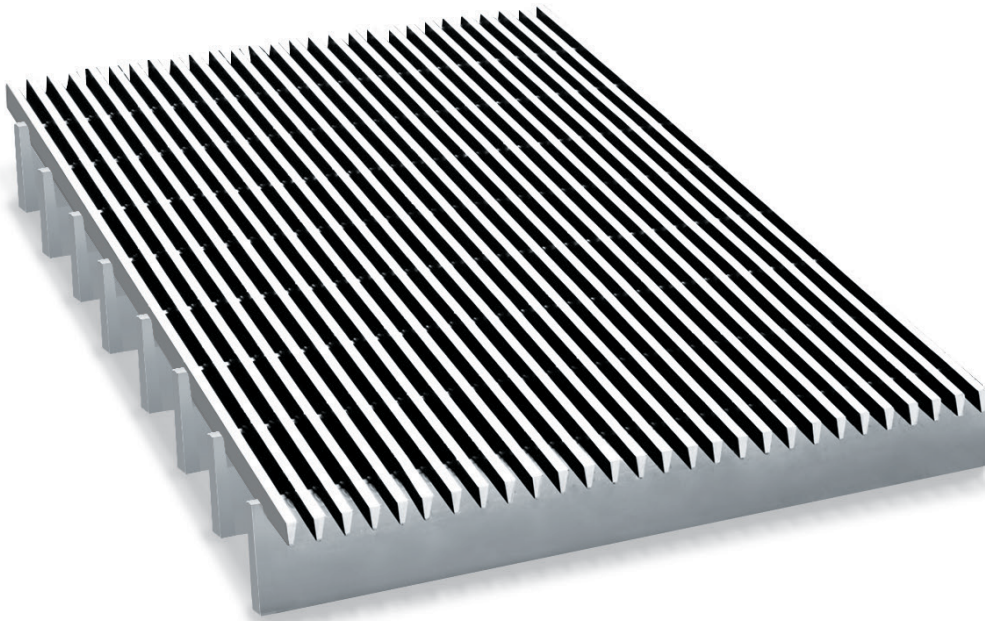


## GridLine® G6



GridLine is a high-end, heavy-duty grid system that protects interior flooring and carpets by trapping incoming dirt and debris from pedestrian shoes. A sustainable option, designers and owners will love the high-tech appearance of the satin finish, and building owners will love the durability of stainless steel combined with easy maintenance.

### Advantages

- Exceptional traction and scraping action
- High-end, high-tech appearance
- Extremely durable
- Easy maintenance
- Sustainable
- Coordinates with surrounding stainless-steel accents

### Building Segments

- Education
- Civic & Culture
- Corporate and Commercial
- Healthcare
- Retail & Hospitality
- Mixed Use
- Sports & Convention Centers
- Transportation

### Applications

- Interior and exterior entries
- Vestibules



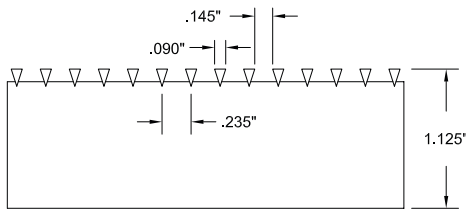
[View 3D Model](#) →

# GridLine® G6

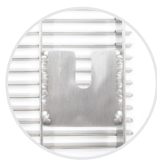
## Product Details

- Product depth:
  - 3/8" (9.5mm)
  - 5/8" (15.9mm)
  - 1 1/8" (28.6mm)
- Wire:
  - Width: .090" (2.2mm)
  - Spacing: .145" (3.7mm)
  - On-center Spacing: .235" (6mm)
- Alloy options:
  - Type 304
  - Type 316

## Connection Details



## Lockdown Options



Welded tab



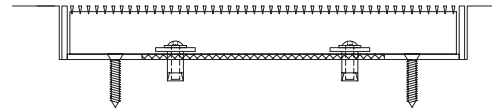
Surface located

## Warranty

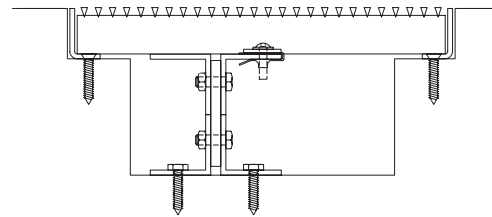
- Five-Year Product Warranty

## Frame Options

- No Frame



Level base frame w/optional drain pan



Deep pit frame w/optional drain pan

## Standard Finish



Satin #4

## Optional Finishes

- Bead/sand blasted
- SlipNOT coated

See all frame and finish options online at [c-sgroup.com](http://c-sgroup.com).

## Certifications/Testing

- Rolling Load Capacity: Standard 1,000 lb./wheel, Deep Pit Frame Applications is 300 lb./wheel
- ASTM D-2047-96 SCOF: 0.70 Wet
- LEED EQ credit 5
- Low VOC Emissions Certificate – Intertek Clean Air Gold (CDPH 01350 v1.2)



Learn More →