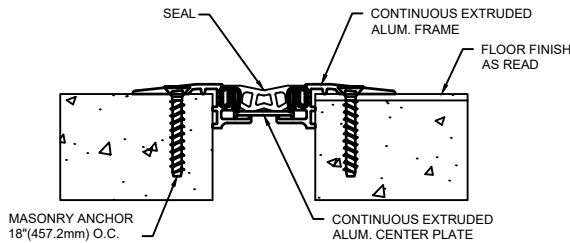
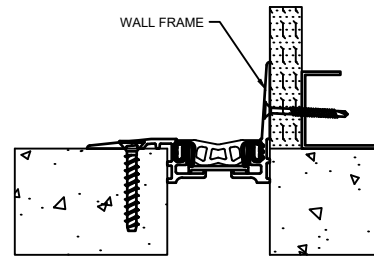


# MODEL GFS & GFSW INSTALLATION INSTRUCTIONS

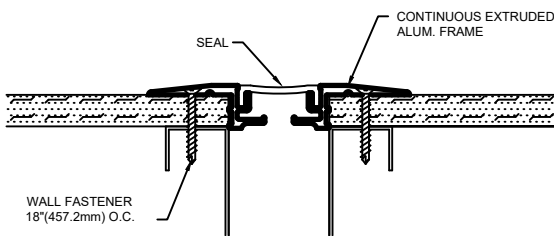


MODEL- GFS

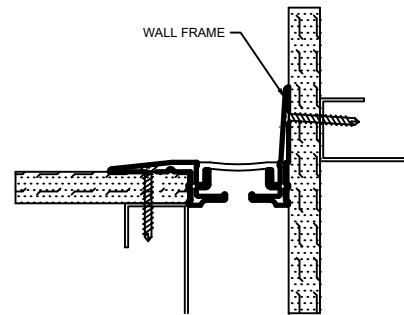


MODEL- GFSW

## FLOOR MODELS



MODEL- GFS



MODEL- GFSW

## WALL MODELS

## IMPORTANT INFORMATION

Prior to the commencement of Installation, all materials **MUST** be inspected for Damage. Any damage must be reported to CONSTRUCTION SPECIALTIES, INC., as soon as possible, so that replacement materials may be furnished without delay.

All work must be completed as per Architect's Approved "Shop Drawings", and in accordance with these Installation Instructions. When installation is complete, all materials must be protected from damage until the Architect's FINAL INSPECTION.

All materials should be arranged in the order that they are to be installed. All hardware required for each portion of the work should be placed with the appropriate materials.

Please review all Approved Shop Drawings and this Document to familiarize yourself with all the details and components of this assembly.

## IMPORTANT:

**READ THROUGH ALL INSTRUCTIONS PRIOR TO STARTING INSTALLATION**

4/3/25



**Construction Specialties™**

6696 Route 405 Highway, Muncy PA 17756  
(800) 233-8493 • Fax (570) 546-5169 • [www.c-sgroup.com](http://www.c-sgroup.com)

This document is the property of Construction Specialties, Inc. and contains CONFIDENTIAL PROPRIETARY INFORMATION that is not to be disclosed to third parties and is not to be used without approval in writing from Construction Specialties, Inc.

### Notes:

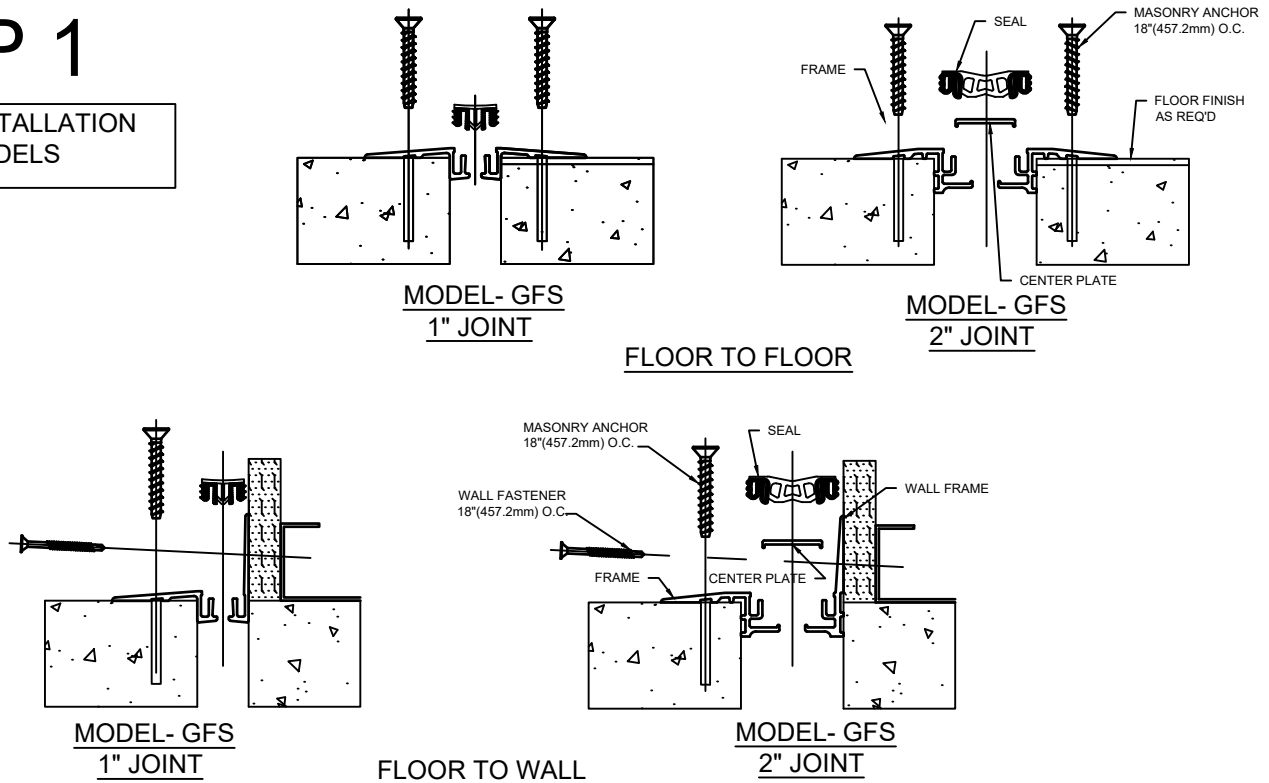
Before beginning installation, review the architectural drawings and approved Construction Specialties Inc. shop drawings to familiarize yourself with the appropriate joint cover models and locations.

Check all of the joint cover components to confirm that the correct joint cover model and size have been received. Also, check for materials that may have been damaged during shipping. Report all incorrect and/or damaged components to C/S at 800-233-8493.

Read through all the steps of these instructions prior to beginning work.

# STEP 1

## FRAME INSTALLATION FLOOR MODELS



### Notes:

-If a C/S Fire Barrier is to be installed in the joint, please review the Fire Barrier Installation Instructions supplied, and if required install the Fire Barrier **BEFORE** installation of C/S Seismic Expansion Joint Aluminum Frames.

-If a Vapor Barrier is to be installed in the joint, please review the Vapor Barrier Installation Instructions supplied, and if required install

the Vapor Barrier **BEFORE** installation of C/S Seismic Expansion Joint Aluminum Frames.

1.1) Note: **Floor Model GFS200 & GFSW200** will require installation of center plate into frames.

A) Methods of Installation:

B) Cut several 2" pieces of seal to be used as spacers. Install spacers into frame(s).  
Cut the length of seal as needed for the run and install into the aluminum frame(s).

1.2) Recommended Installation Tips for Seal:

- 1) Unroll seal material and allow exposure to sun to soften, becoming more pliable. Spray the back of the seal with a soapy water solution, to aid in installation.
- 2) Soak seal in a hot water bath to soften seal.

1.3) Begin installation by placing a length of frame into the blockout. Cut the frame(s) to length as needed.

Using the Frames as a template, mark the locations of the fasteners. Remove the frame(s) and drill the holes for the anchor bolts. The holes are to be drilled with the appropriate size and type of drill bit indicated by the manufacturer of the anchor bolts, as supplied by C/S.

1.4) Floor to Floor Installations:

Reposition and attach the frames to the slab with the C/S supplied anchors following the manufacturer's guidelines.

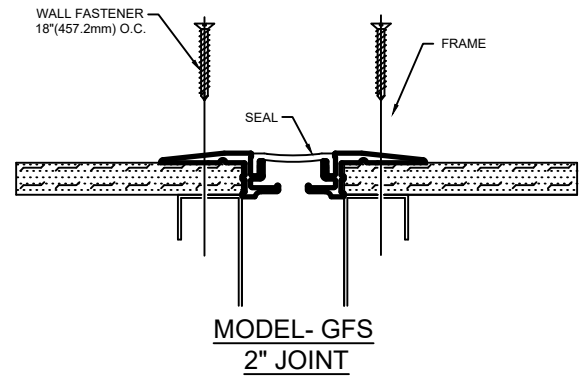
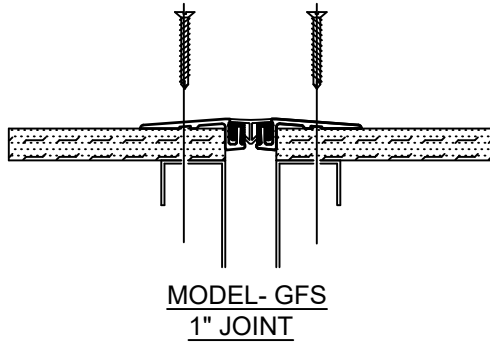
1.5) Floor to Wall Installations:

Reposition and attach floor frame to the slab with the supplied anchor bolt following the manufacturer's guidelines. Attach the wall frame to surface of the wall using C/S supplied wall fasteners.

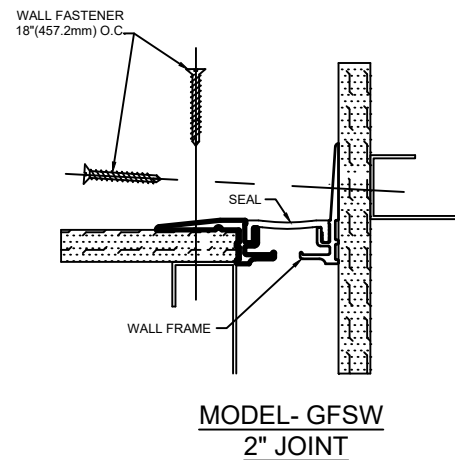
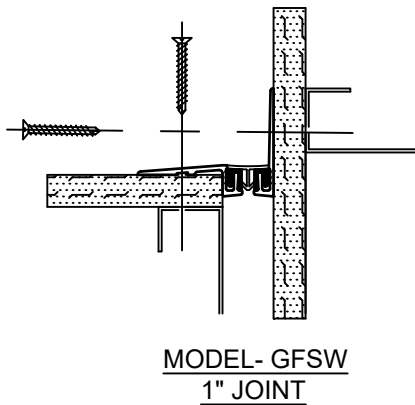
1.6) If 2" Spacers were used, remove spacers once frames are installed. Insert continuous seal lengths, using tips above, into the frame(s). Seal can be engaged using a rubber mallet and wood block. (A seam roller may also be used to engage seal) Repeat installation procedure for additional lengths needed.

# STEP 2

## FRAME INSTALLATION WALL MODELS



### FLAT WALL



### CORNER WALL

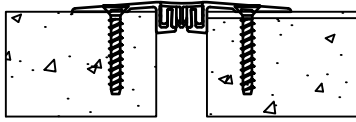
#### Notes:

-If a C/S Fire Barrier is to be installed in the joint, please review the Fire Barrier Installation Instructions supplied, and if required install the Fire Barrier **BEFORE** installation of C/S Seismic Expansion Joint Aluminum Frames.

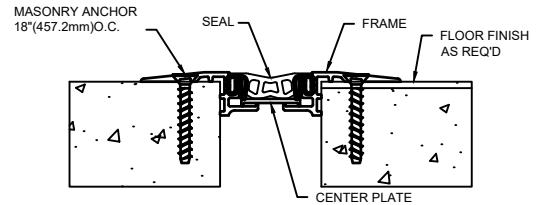
- 2.1) Recommended Installation Tips for Seal:
  - A) 1) Unroll seal material and allow exposure to sun to soften, becoming more pliable. Spray the back of the seal with a soapy water solution, to aid in installation.
  - B) 2) Soak seal in a hot water bath to soften seal.
- 2.2) Prior to installation, assemble the seal and frames.
- 2.3) Measure and cut the Frame(s) and seal to the appropriate length required.
- 2.4) Insert the seal lengths, using tips above, into the aluminum frames. The seal can be engaged using a rubber mallet and wood block. (A seam roller may also be used to engage the seal).
- 2.5) Align the joint cover assembly over the joint and anchor the aluminum frames with the C/S supplied fasteners.
- 2.6) Repeat this installation procedure for any additional lengths of the assembly.

# STEP 3

## COMPLETE INSTALLATION

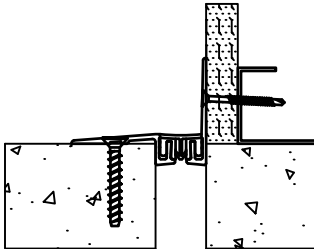


MODEL- GFS  
1" JOINT

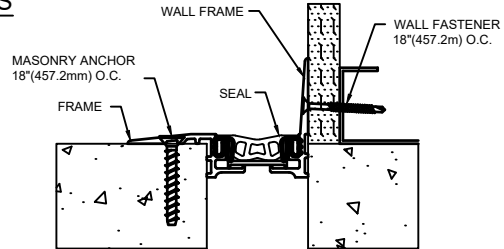


MODEL- GFS  
2" JOINT

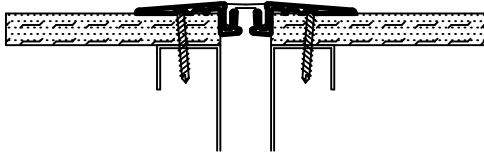
## FLOOR MODELS



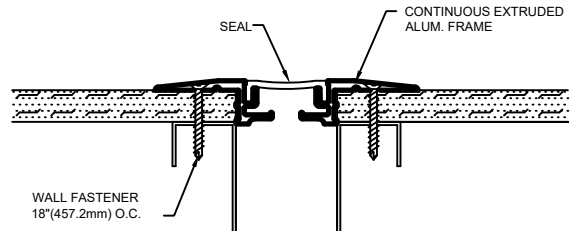
MODEL- GFSW  
1" JOINT



MODEL- GFSW  
2" JOINT

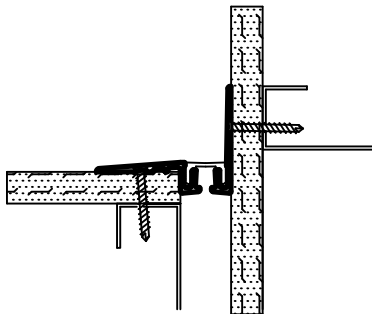


MODEL- GFS  
1" JOINT

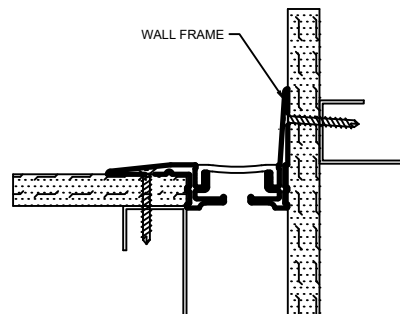


MODEL- GFS  
2" JOINT

## WALL MODELS



MODEL- GFSW  
1" JOINT



MODEL- GFSW  
2" JOINT

- 3.1) Should Splicing of the Wall Seal be required, wipe the ends of seals to be bonded with alcohol (or similar) to remove all dirt, moisture and oils that might affect the bond. Apply CA-40 adhesive to the entire cut surface of the seal. **IMPORTANT: PLEASE OBSERVE THE SAFETY PRECAUTIONS ON THE ADHESIVE CONTAINER!**
- 3.2) Align and bring the ends of the two seals together. Apply pressure against the ends of the seal until the adhesive has set.
- 3.3) When installation of the Expansion Joint Cover has been completed, remove all residue and foreign matter from the area and joint cover.
- 3.4) Floor Covers apply the appropriate floor finish as req'd.
- 3.4) Clean the C/S Joint Cover and adjoining surfaces with proper cleaner. Protect the Joint Cover until Architect's final inspection.