

Louver Accessory - Bird and Insect Screens

Wire Intercrimp Screen Options:

Use	Size	Material	Free Area
Bird Screen	1/2" x 1/2" mesh 0.063" (1.626mm) wire (16 gauge)	Aluminum or Stainless Steel	76%
Bird Screen	1/2" x 1/2" mesh 0.0403" (1.024mm) wire (18 gauge)	Galvanized Steel	76%
Insect Screen	18 x 16 wires per inch x 0.011" (0.286mm) wire diameter	Aluminum	70%

Construction Specialties features a complete line of protective screens. All CS screening can be secured to the interior of the louver by use of sheet metal screws. Frames can be easily removed or replaced.

Bird Screens

Our standard bird screen for both fixed and operating louvers is 1/2" x 1/2" mesh .063" diameter wire intercrimped screen made of aluminum or stainless steel in a removable frame. It is also available in galvanized steel 0.0403" diameter wire intercrimped screen. It is recommended that all screens be mounted on the back of louvers for appearance and ease of maintenance. This screening has 76% free area.

Insect Screen

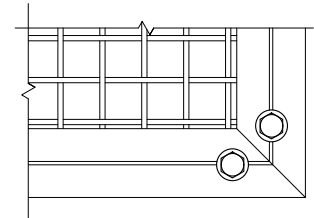
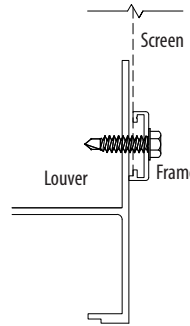
The standard CS insect screen is aluminum 18 x 16 mesh retained in a rolled aluminum frame. The wire is 0.011" in diameter 5056 alloy with an alclad coating of 6253 alloy to resist corrosion. The rolled aluminum frame is mitered and secured with corner clips providing a strong and neat insect screen frame.

Finish

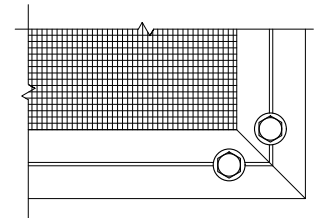
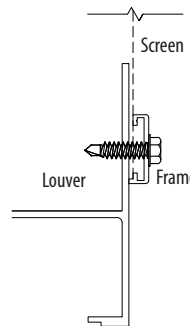
Unless otherwise specified, all insect and bird screens and frames are furnished mill finish. Insect screen wire is too fine for an anodize or duranodic finish. Painting the screen greatly reduces the free area. In corrosive atmospheres, fiberglass insect screens can be specified. Bird screens can be supplied with any of the standard CS finishes. In certain industrial-chemical atmospheres (such as chlorine, fluorine, potassium hydroxide, sulfuric acid, sodium sulfide or petroleum distillates) stainless steel bird screens should be used instead of the aluminum.

Replaceable

Aluminum screen frames are secured in a place with #8 stainless steel sheet metal screws and are fully removable for the repair or replacement. Cross bars or screen reinforcement bars are supplied for all screen areas over 50 sq. ft.



Bird Screen 1/2" x 1/2" mesh



Insect Screen 18 x 16 wires per inch