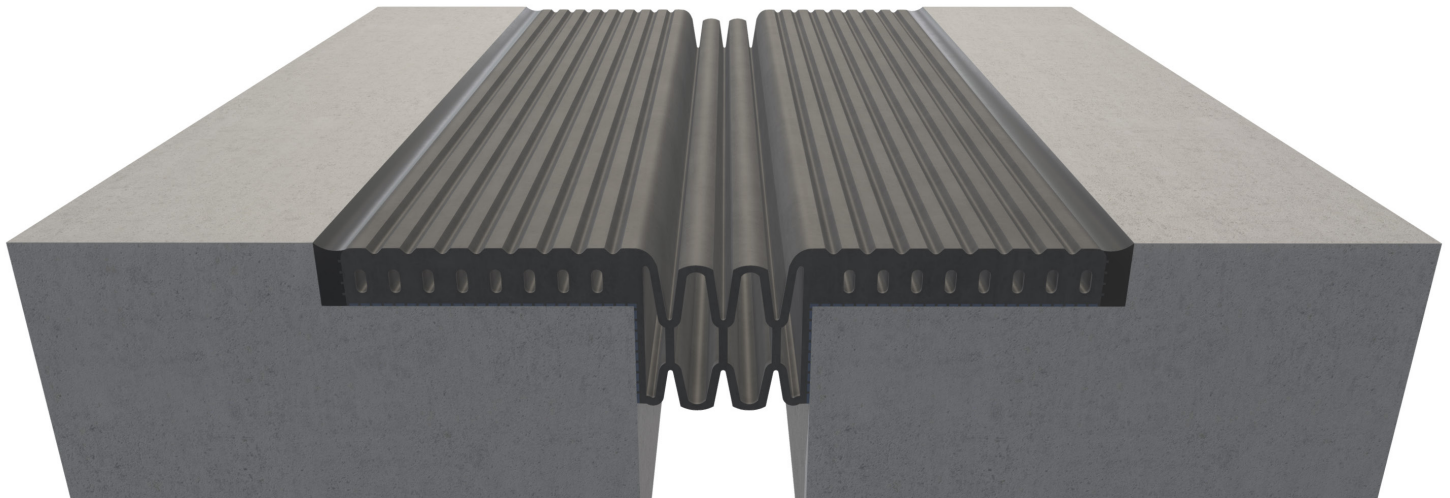


ZB Series



Model ZB

This parking cover has an EPDM seal that allows for movement, while the integral nosing eliminates the need for elastomeric concrete. During installation, the cover is bonded into a high-strength epoxy bedding and is sealed on each side with a urethane sealant, resulting in a durable and watertight system.

Advantages

- Great for parking structures and stadium applications
- Eliminates the need for messy elastomeric concrete
- One-piece design for fast and simple installation
- Splice kits available for field splicing of material
- No mechanical fasteners
- Durable, watertight system

[View 3D Model →](#)

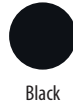
ZB Series

Product Details

- Joint sizes range from 1" to 4" (25.4mm to 101.6mm)
- Available in five standard roll sizes: 20', 30', 65', 130' and 200'
- 3,000 lbs. concentrated load per IBC2009 1607.1
- Meets ASTM E1399



Seal Color

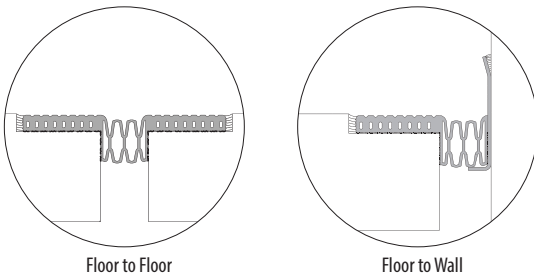


Aluminum in contact with concrete/masonry will have a 2 mil heavy metal free high solids primer

Warranty

- Standard Five-Year Warranty

Model Details



MODEL	FLOOR TO FLOOR	FLOOR TO WALL
ZB	●	
ZB-Alt 1		●



Learn More →