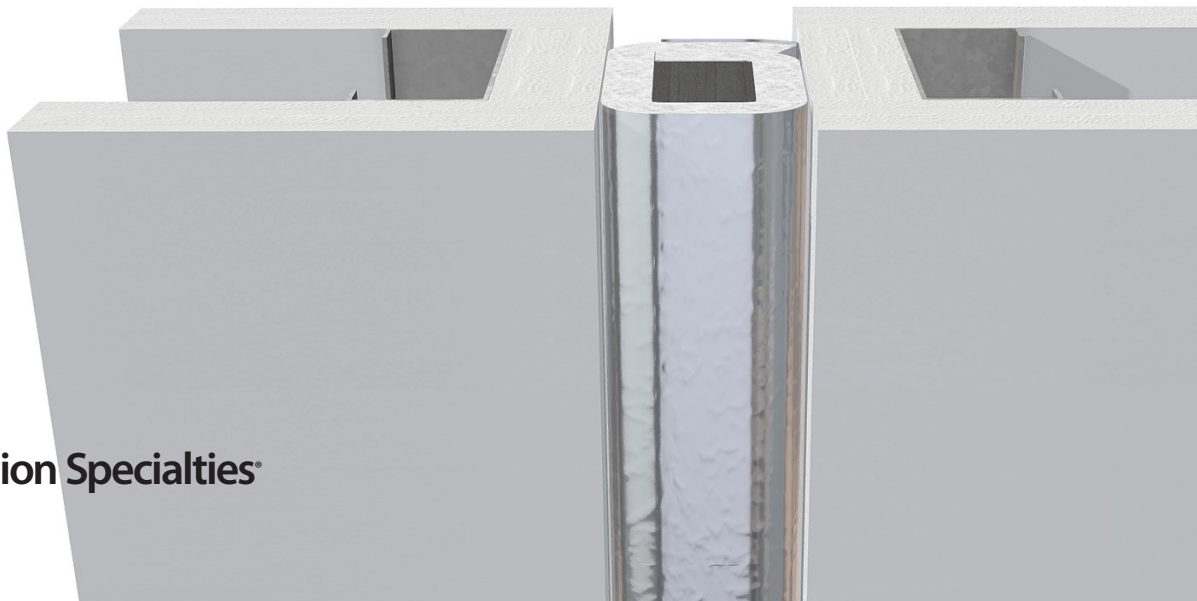
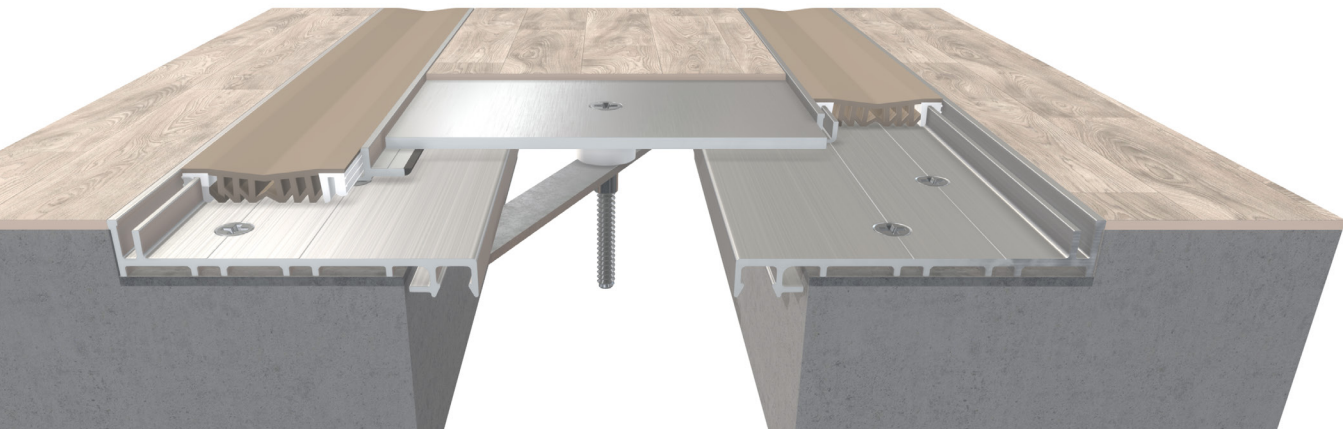
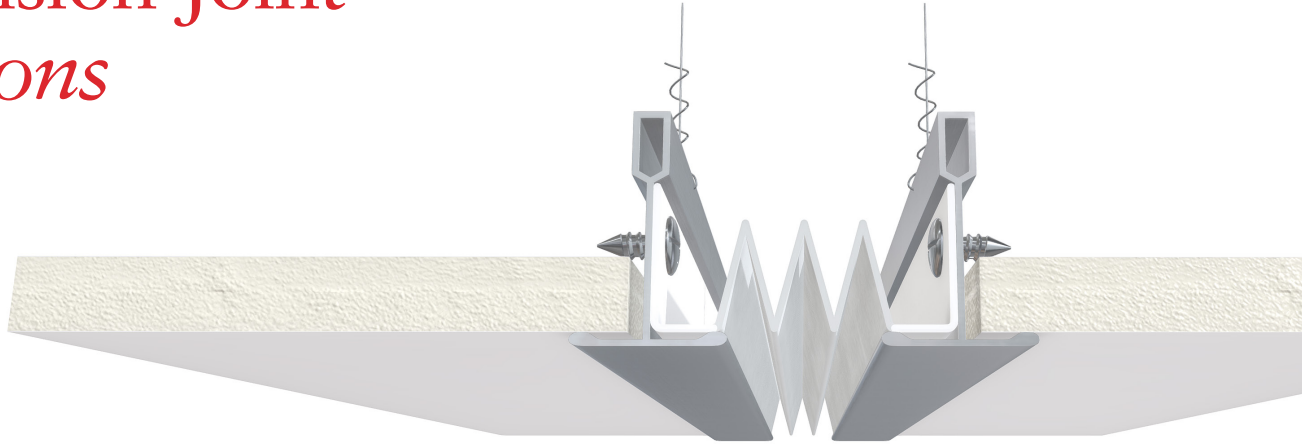
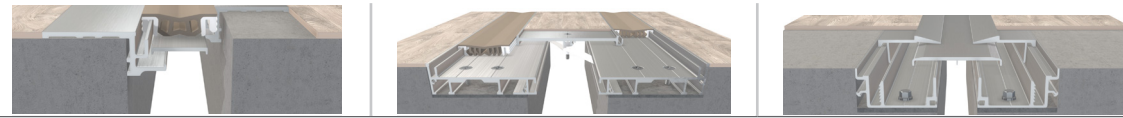


Expansion Joint Solutions

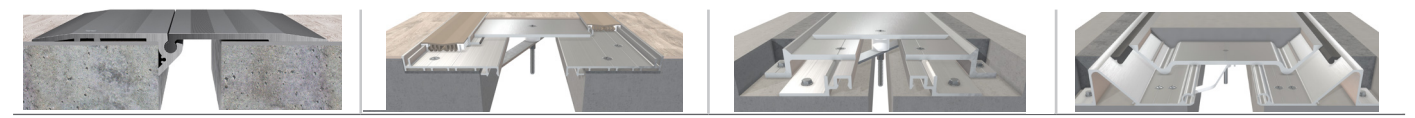


Compare Interior Cover Solutions



FLOOR JOINT SYSTEMS

Product Series	GFPS, GFS, GFST GFT Series	DGTP, DGTR, GTP GTR Series	ALHD, ALR, ALS, APF, FYW RFC Series
Joint Size	1" - 2"	2" - 4"	1" - 4"
Cover Material	Gasket	Dual Gasket	Metal
Total Movement (% of joint width)	50%	100%	100-200%
Blockout Required	Model Specific	Yes	Model Specific
Installation	Flush and Surface	Flush	Flush
Hygienic	•	•	
Tamper Resistant			•
Low Maintenance			•
Loading	Standard	Standard/Heavy	Standard/Heavy
Fire Barriers	FB-22	FB-22	FB-22
Interior/Exterior Application	Interior	Interior	Interior/Exterior
Cost Index	\$	\$\$\$	\$ - \$\$\$



FLOOR JOINT SYSTEMS

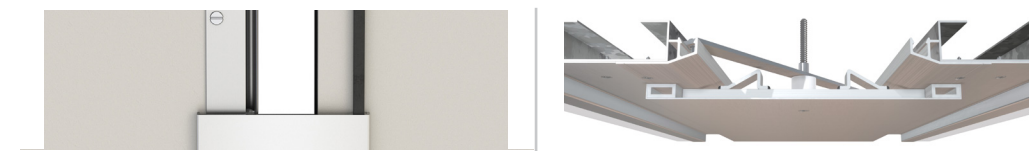
GYMF, PC-2G, PCS-2G, RFA, RFB RFD Series	SGP SGR Series	SJHD, SJP, SJPF SJPF Series	SSR Series
1" - 16"	5" - 16"	1" - 16"	2" and up
Metal	Gasket, Metal or Infill	Metal or Infill	Infill
100%	100%	100-200%	100-200%
No	Yes	Model Specific	Yes
Surface	Flush	Flush and Surface	Flush
	•		
Standard/Heavy	Standard	Standard/Heavy	Standard/Heavy
FB-22, FB-17	FB-17	Contact Factory	FB-97
Interior/Exterior	Interior	Interior/Exterior	Interior/Exterior
\$\$	\$\$\$	\$\$ - \$\$\$	\$\$\$ - \$\$\$\$

Compare Interior Cover Solutions *(cont'd)*



WALL & CEILING JOINT SYSTEMS

Product/Series	Wall – FWF, FWS; GFS-WL Series Ceiling – FCF, FCS; HC Series	Wall – GTW SGW Series
Joint Size	1" - 10"	2" - 16"
Cover Material	Gasket	Dual Gasket
Total Movement (% of joint width)	50-200%	100-200%
Minimum Exposed Surface	•	•
Hygienic	•	•
Tamper Resistant		
Low Maintenance		
Surrounding Finishes	Drywall, Ceramic Tile	Drywall, Ceramic Tile
Fire Barriers	FB-22, FB-24, FB-17	FB-24, FB-97
Cost Index (\$ - \$\$\$)	\$	\$\$ - \$\$\$



WALL & CEILING JOINT SYSTEMS

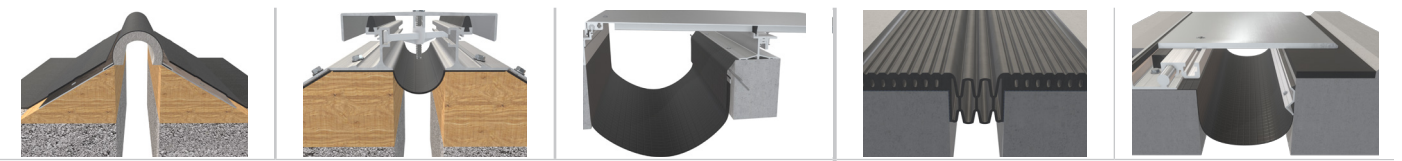
AFW ASM Series	Wall – LAF-2G, LAS-2G; SFW Series Ceiling – SFC; SGC Series
1" - 4"	4" and up
Metal	Metal
100-200%	100%
•	•
•	•
All Finishes	All Finishes
FB-24	FB-17, FB-97
\$\$ - \$\$\$	\$\$

Compare Exterior Cover Solutions *(cont'd)*



FACADE & SOFFIT JOINT SYSTEMS

Product/Series	SC SF Series	VF Series	AFW-X, ASM-X ESW Series	XLP, XLS, XLP-2G XLS-2G Series
Joint Size	2" - 24"	1" - 8"	1" - 16"	8" - 34"
Cover Material	Gasket	Foam	Metal	Metal or Infill
Total Movement (% of joint width)	100-200%	100%	100-200%	200%
Surrounding Finishes	All Finishes	All Finishes	All Finishes	All Finishes
Fire Barriers	FB-24, FB-17, FB-97	VFR	FB-24, FB-17	FB-17, FB-97
Cost Index (\$ - \$\$\$\$)	\$ - \$\$	\$\$\$	\$\$ - \$\$\$	\$\$\$\$



ROOF JOINT SYSTEMS

FLOOR & TRAFFIC GRADE JOINT SYSTEMS

Product/Series	BRJ Series	RJT SRJ Series	LSRR MARR Series	HB, HF, PDA, ZB ZBSM Series	KB, PTC, PTCP, SHP SMP Series
Joint Size	1" - 16"	1" - 16"	8" - 36"	1" - 4"	4" - 24"
Cover Material	EPDM	Metal	Metal	EPDM and Foam	Metal
Total Movement (% of joint width)	100%	100%	100-200%	50-200%	100-200%
Surrounding Finishes	All Roof Finishes	All Roof Finishes	All Roof Finishes	Concrete, Paver	Concrete, Paver
Fire Barriers	FB-22, FB-17, FB-97	FB-22	Monoflex®, FB-17		FB-17, FB-97
Cost Index (\$ - \$\$\$\$)	\$\$	\$\$	\$\$ - \$\$\$\$\$	\$\$ - \$\$\$	\$\$\$ - \$\$\$\$\$



Construction Specialties®

c-sgroup.com | 800.233.8493