

INSTALLATION INSTRUCTIONS
FOR

CANTILEVERED SUNSHADE
SYSTEM

- READ THESE INSTRUCTIONS COMPLETELY BEFORE STARTING INSTALLATION.
- USE THESE INSTRUCTIONS IN CONJUNCTION WITH C/S SHOP DRAWINGS

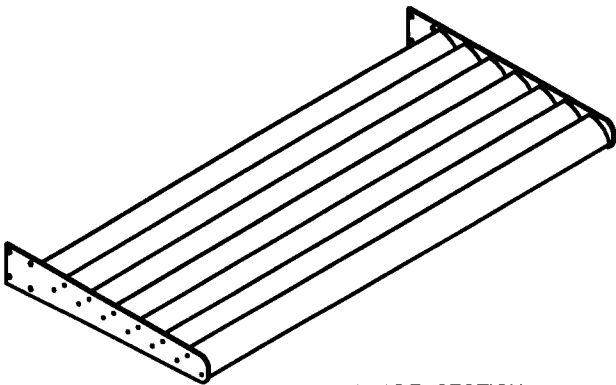


Construction Specialties
49 Meeker Ave | Cranford, NJ 08016
800-526-6930 | www.c-sgroup.com

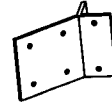
STEP-1

PREPARATION

1. TO BEGIN INSTALLATION OF THE CANTILEVERED SUNSHADE SYSTEM YOU MUST FIRST BE IN RECEIPT OF THE SHIPMENTS PACKING LIST, AND SHOP DRAWINGS.
2. LOCATE ALL CRATES, BOXES, CARTONS, ETC...
3. SUNSHADES ARE SHOWN ON PACKING LISTS BROKEN INTO INDIVIDUAL PARTS, BY NAME AND SIZE SEE SAMPLE BELOW:
SS-1 1 60" X 24" AS FOLLOWS:
1 PC. SUNSHADE SECTION 60" CRATE 1
2 PCS. MOUNTING "T" CRATE 2
4. INDIVIDUAL PARTS LISTED ARE MARKED AT FAR RIGHT OF PACKING LIST. AS TO THEIR CRATE, CARTON, BOX, ETC....
5. START WITH FIRST SUNSHADE, REMOVE AND IDENTIFY THE PARTS FROM APPROPRIATE PACKAGES FOR THAT SUNSHADE. CHECK FOR CORRECT QUANTITIES OF EACH ACCORDING TO PACKING LIST. (SEE DIAGRAM BELOW)
6. AFTER ALL PARTS ARE SEPARATED AND IDENTIFIED BY SUNSHADE NUMBER AND IT IS DETERMINED THAT NO PARTS ARE MISSING PROCEED TO MOVE THESE GROUPS TO THEIR DESIGNATED POSITIONS



SUNSHADE SECTION



CORNER MOUNTING "T"

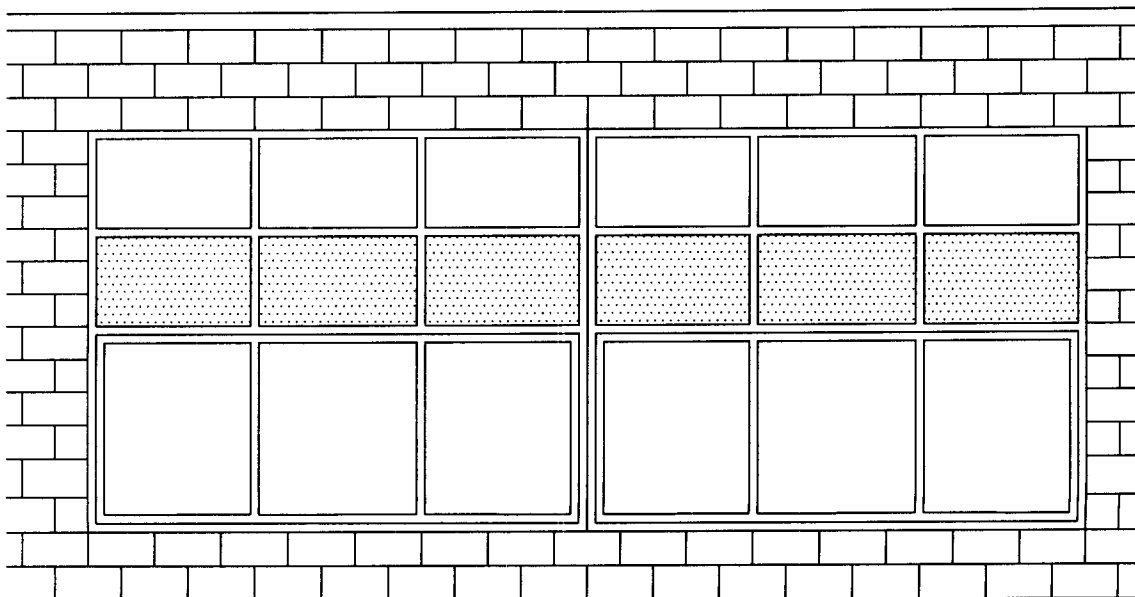


STANDARD MOUNTING "T"

STEP-2

PREPARATION

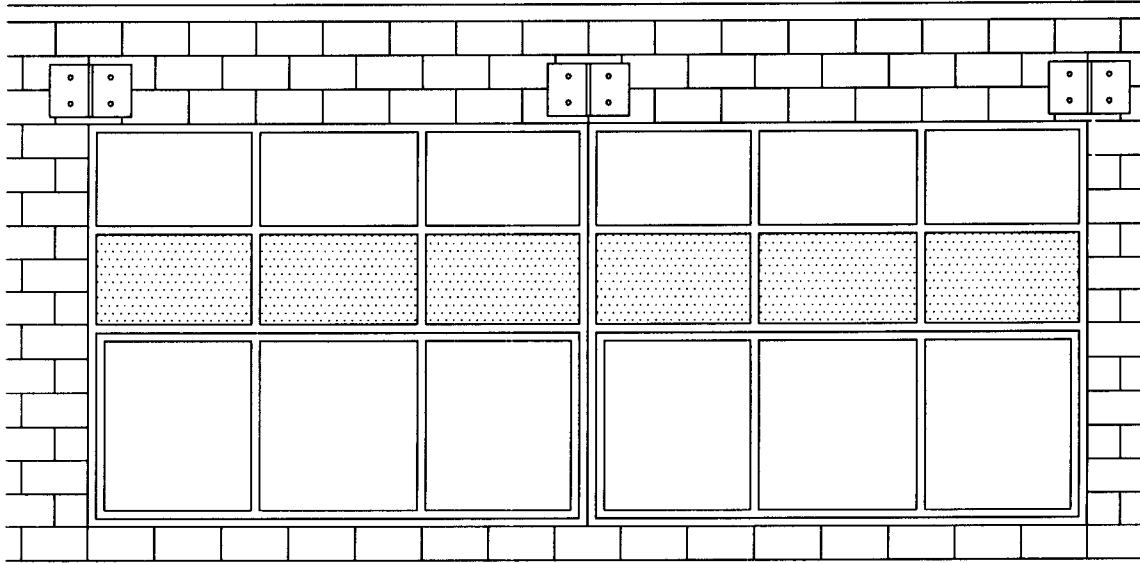
1. INSPECT MOUNTING SURFACE FOR DAMAGE THAT MAY PREVENT INSTALLATION OF THE SUNSHADES.
2. BE SURE THE MOUNTING SURFACE IS FLAT AND PLUMB.



STEP-3

INSTALLING THE MOUNTING "T" AND OUTRIGGERS

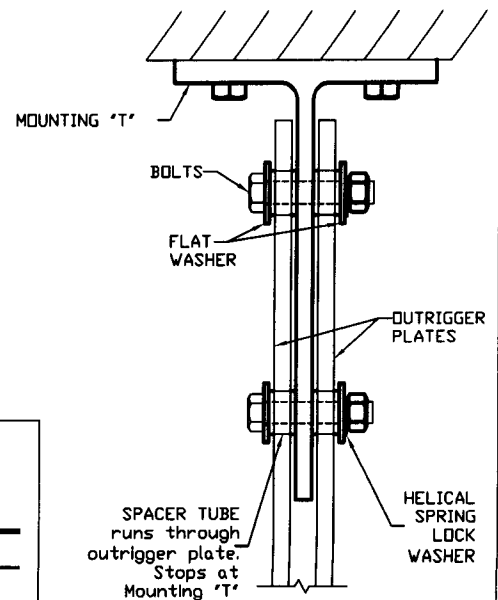
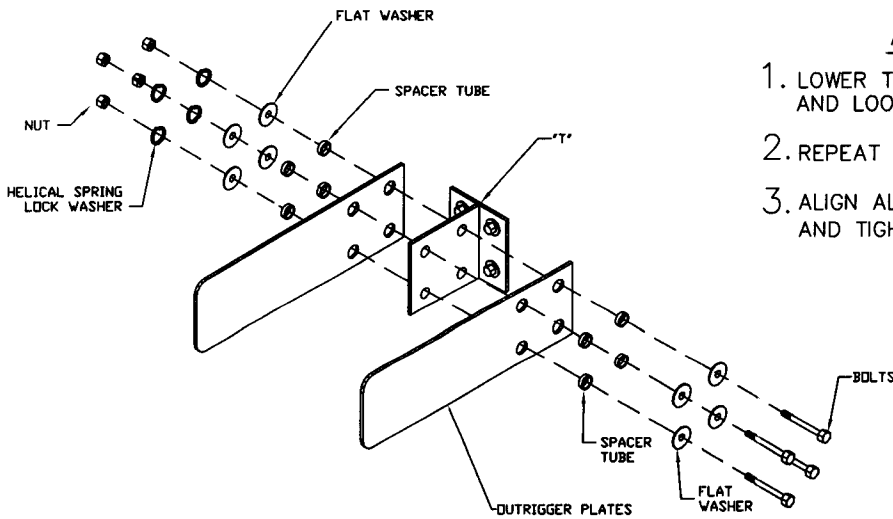
1. LOCATE THE MOUNTING "T"
2. MOUNT THE "T" IN THE PROPER PLACE, MAKING SURE THE "T" IS SQUARE AND LEVEL (SHIM AS REQUIRED).
3. RUN A STRING LINE FROM THE FIRST "T" TO THE LAST AND INSPECT TO BE SURE THEY ARE ALL IN THE SAME PLANE.



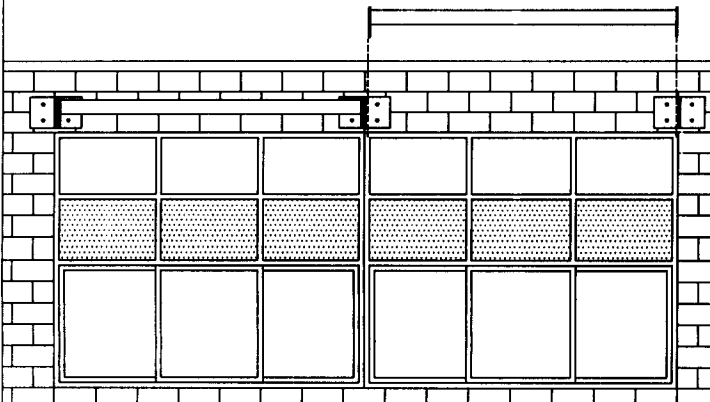
STEP-4

ATTACHING SUNSHADE TO OUTRIGGERS

1. LOWER THE SUNSHADE SECTION ONTO POSITION BETWEEN THE "T" AND LOOSELY BOLT IN PLACE.
2. REPEAT THE PROCESS UNTIL ALL SECTIONS ARE IN PLACE
3. ALIGN ALL SECTIONS, ADJUSTING WHERE NECESSARY, AND TIGHTEN ALL BOLTS TO THE PROPER TORQUE.



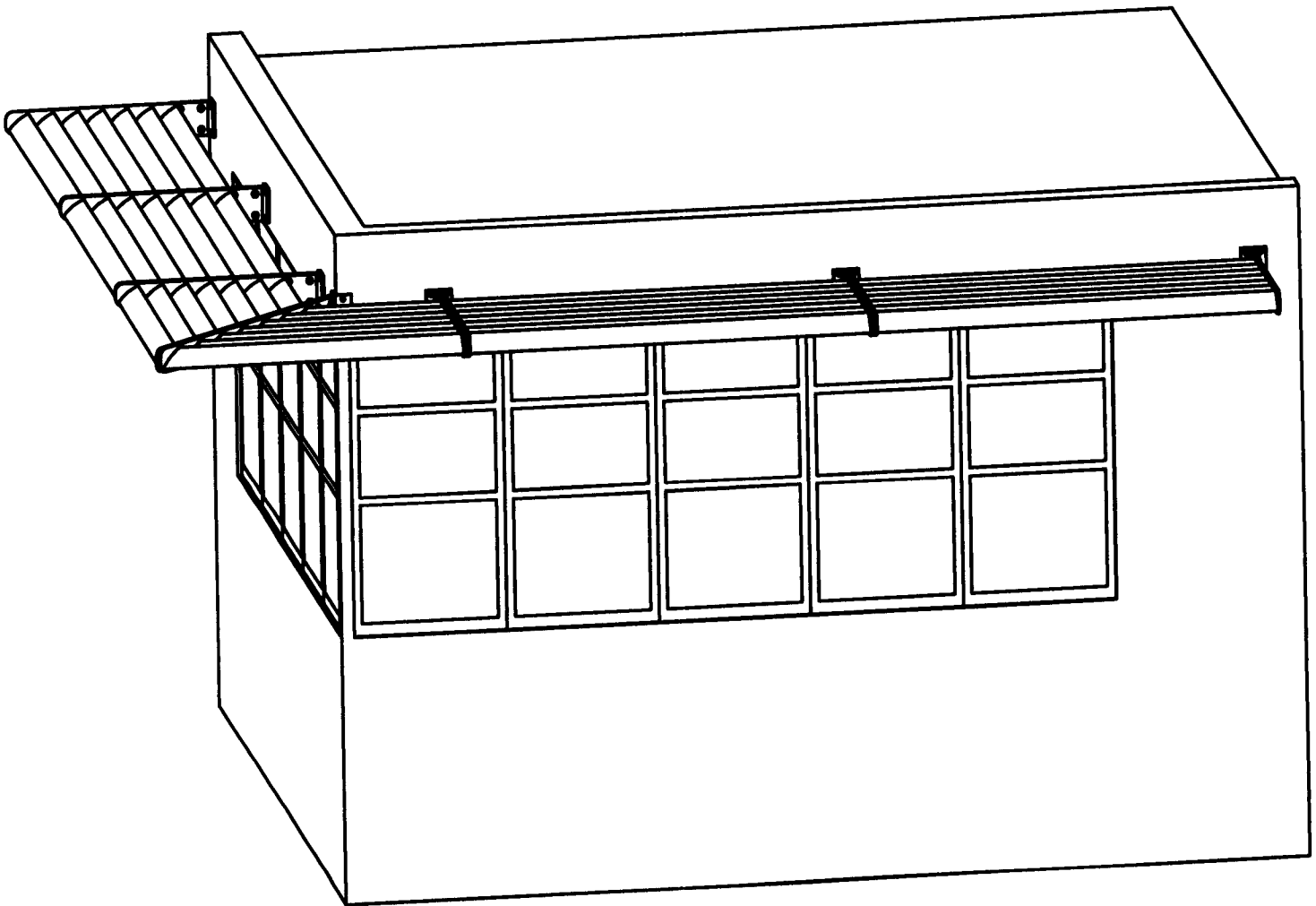
Bolt Size (DIA)	Tightening Torque (ft-lb)
1/2"	75
5/8"	150
3/4"	235
1"	550



STEP--5

FINAL CHECKS

1. CHECK TO BE SURE THE SECTIONS ARE IN THE SAME PLANE AND LINE UP WITH EACH OTHER.
2. CHECK TO BE SURE THAT ALL MOUNTING BOLTS ARE TIGHTENED TO THE PROPER TORQUE VALUE



FOR PROBLEMS WITH MATERIAL SIZES, QUANTITIES, OR ERECTION,
NOTIFY: CONSTRUCTION SPECIALTIES, INC.,
DEL RIO, TX PRODUCTION DEPARTMENT, IMMEDIATELY.
107 JOHNSON BLVD. DEL RIO, TX 78840
TELEPHONE: (830) 774-0151