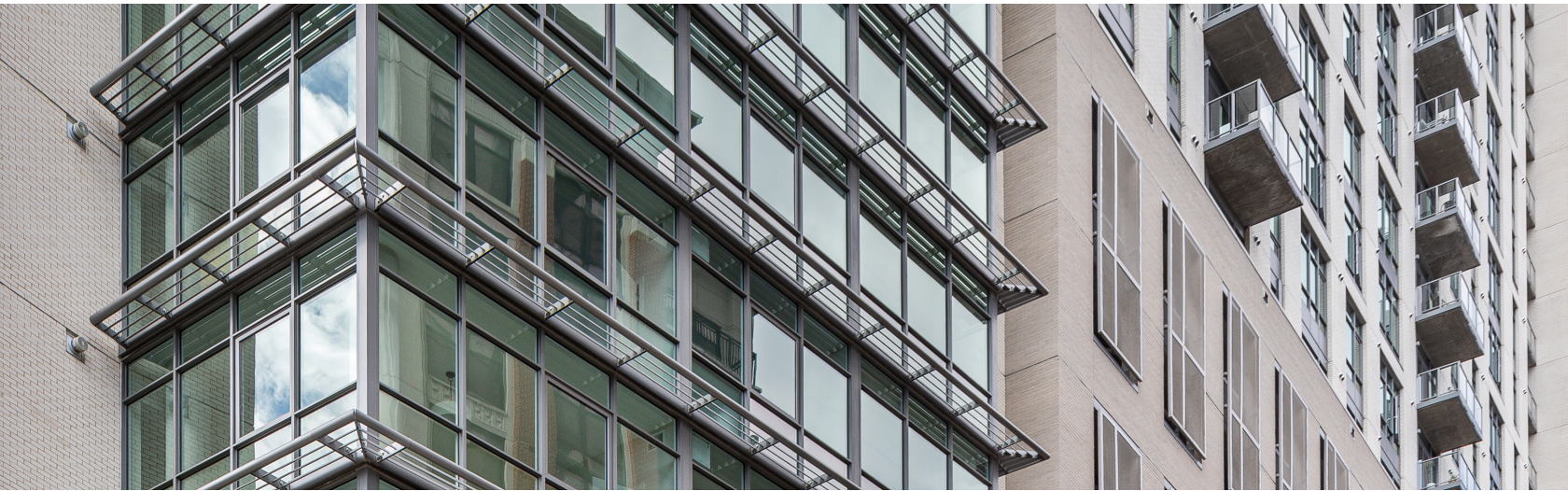
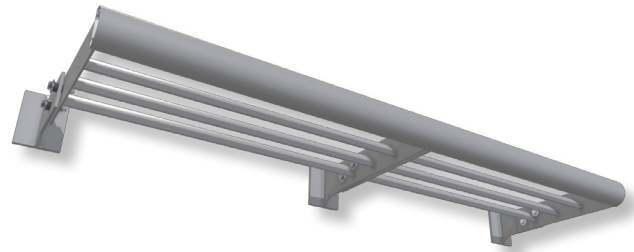


Cantilevered Sunshades



Sometime referred to as "eyebrow" shades, our cantilevered systems tie back into your project's structural support system for a clean visual. Choose between straight or curved outriggers and add lights for an extra pop of fun.



Advantages

- Fixed daylight management solution
- Cantilevers off the building to cast a shadow below
- Functions as an architectural feature for the building
- Provides shading while maintaining occupants' views
- Minimizes solar heat gain to reduce cooling costs and the heat island effect
- Helps reduce glare
- Nearly unlimited blade options available
- Engineered for wind & snow loads and is pre-assembled for easy installation
- Optional LED lighting

Applications

- Any application where either solar (daylighting) control is needed or where awnings or architectural accents are desired.

Cantilevered Sunshades

Product Details

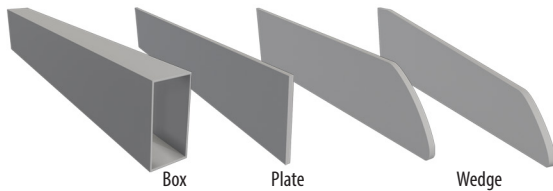
- All hardware and mounting components included
- Extruded Aluminum (Alloy 6063-T6)
- Component options:
 - Airfoil or rectangle tube blades
 - Lighted blades
 - Screens, grilles or perforated panels
- Mounting support back to structure:
 - Flat plate outriggers
 - Curved plate outriggers
 - Rectangle tube outriggers
- Blade/screen support:
 - Set within flat plate outriggers
 - Aluminum bracket on face of rectangle tube
- Blades can be set at angles from 0°- 90° varies by blade

Refer to Component Cards for all configuration options.

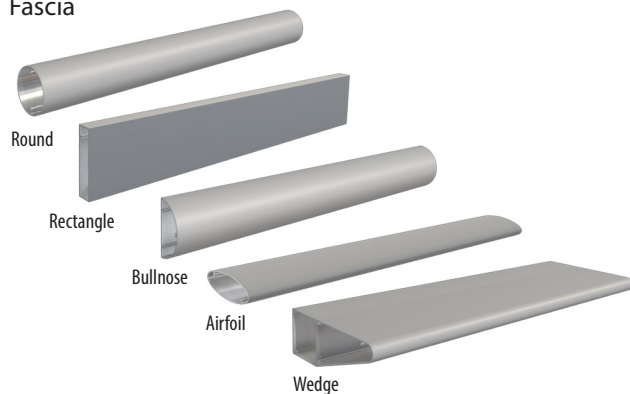
Outrigger and Fascia Details

- Mechanically fastened

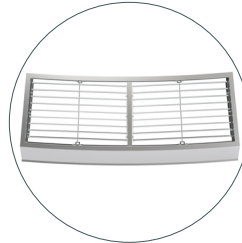
Outriggers



Fascia



Models



Cantilevered

Finish Options



Kynar &
Powder Coat



Pearlescent
& Metallic



Wood Grain
Patterns



Custom
Color

See all finish options online at c-sgroup.com.

Warranty

- 1-year Material Warranty
- 20-year Finish Warranty (excludes anodized)
- 10-year Finish Warranty Wood Grain